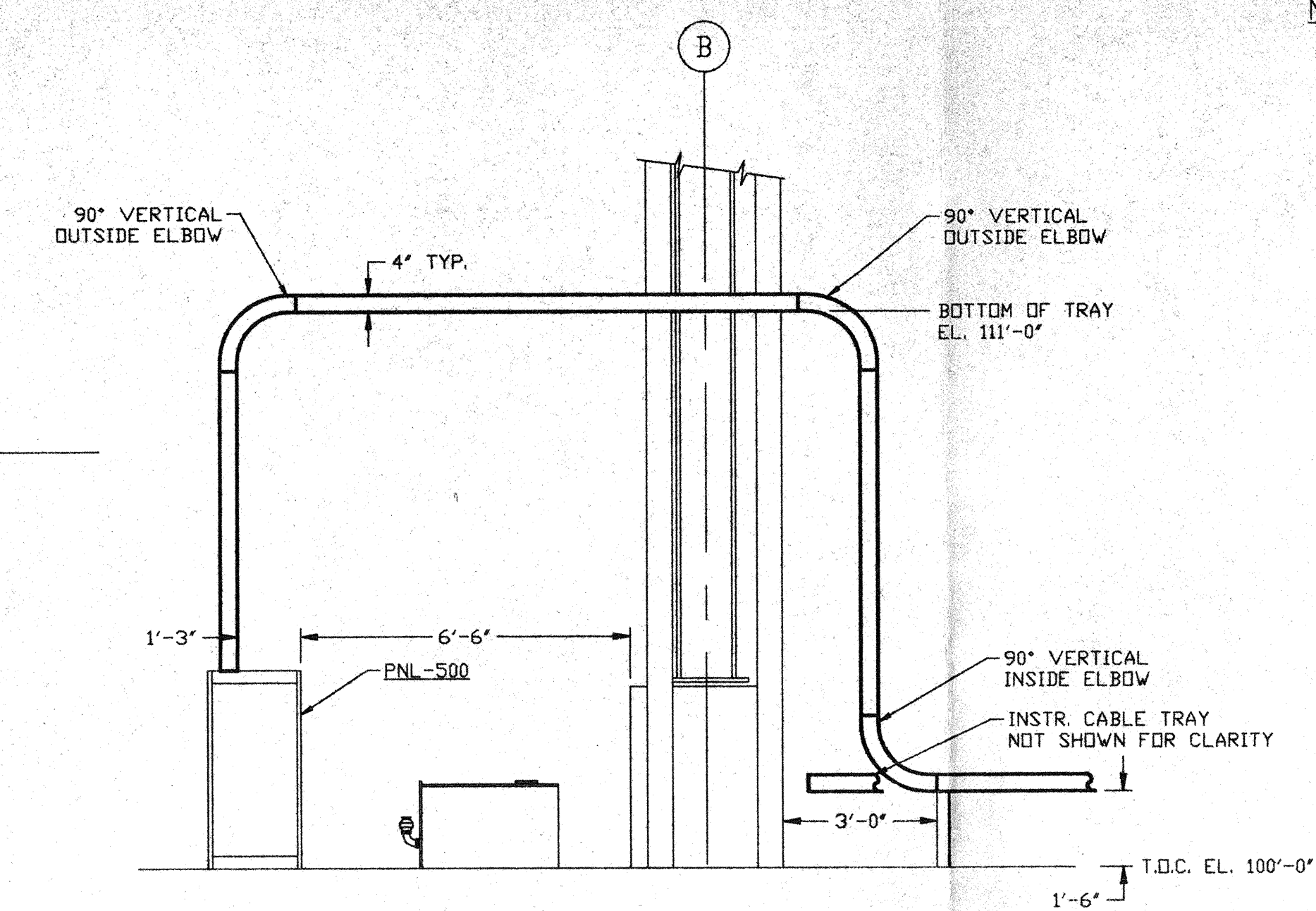
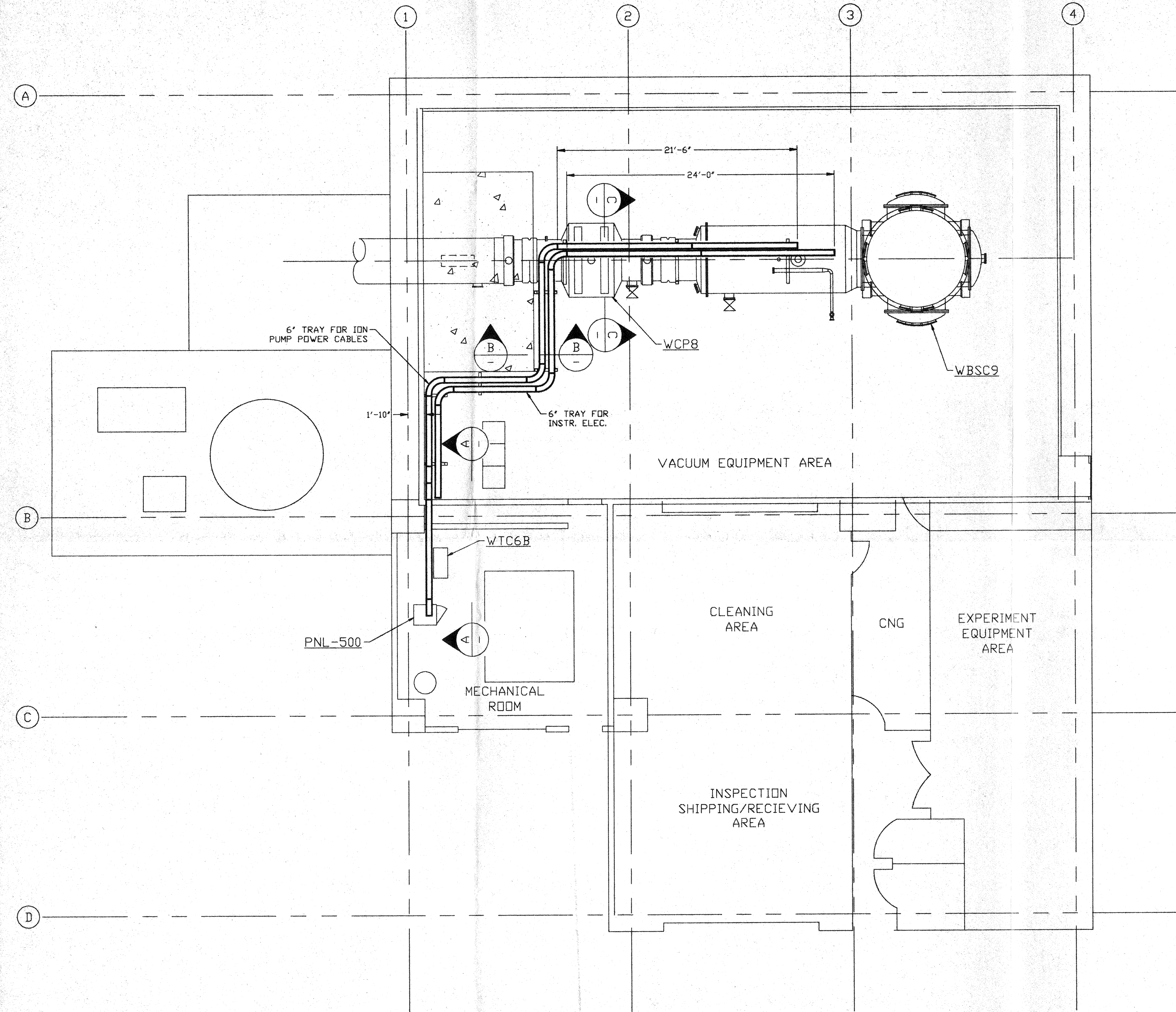
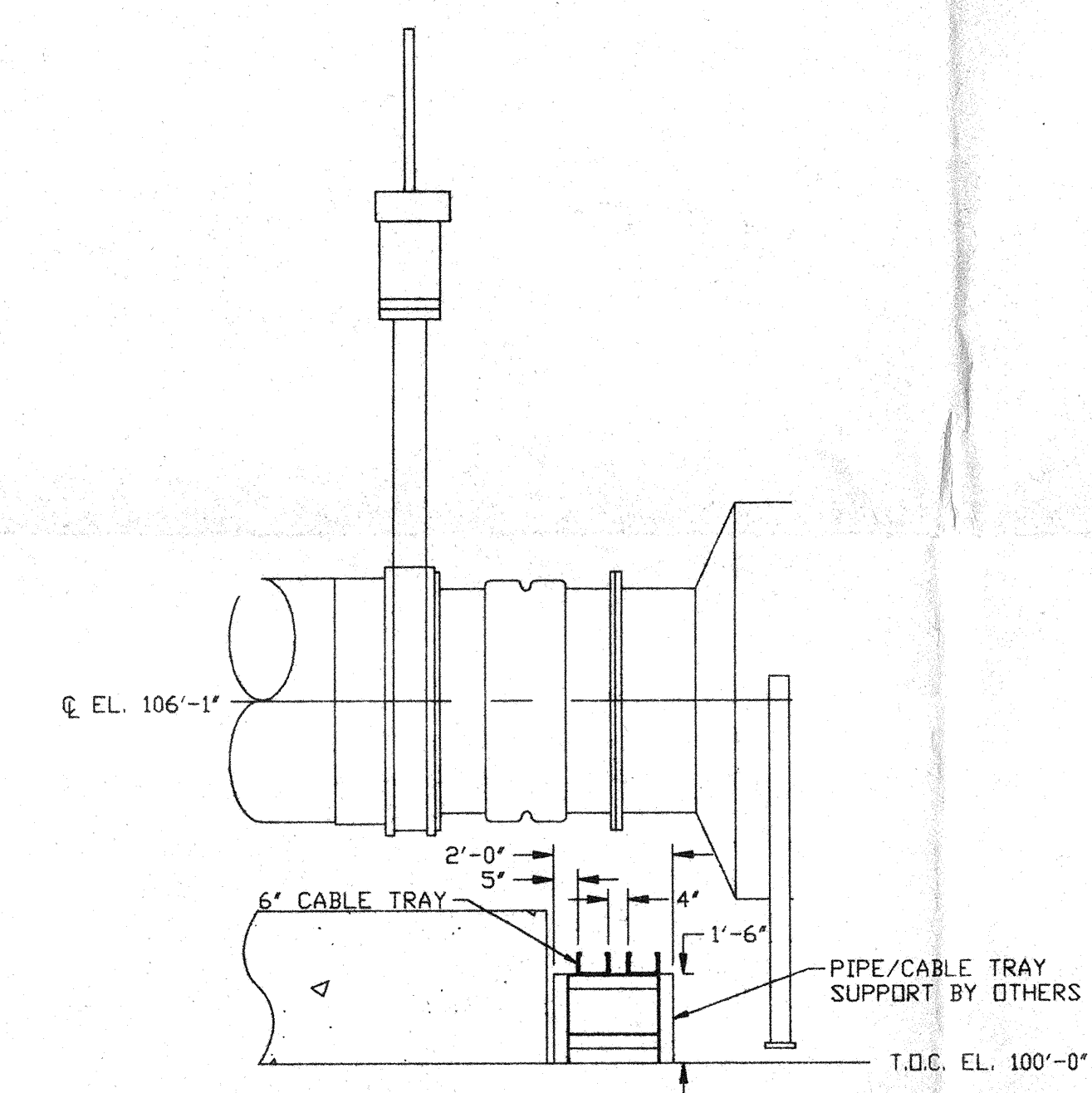


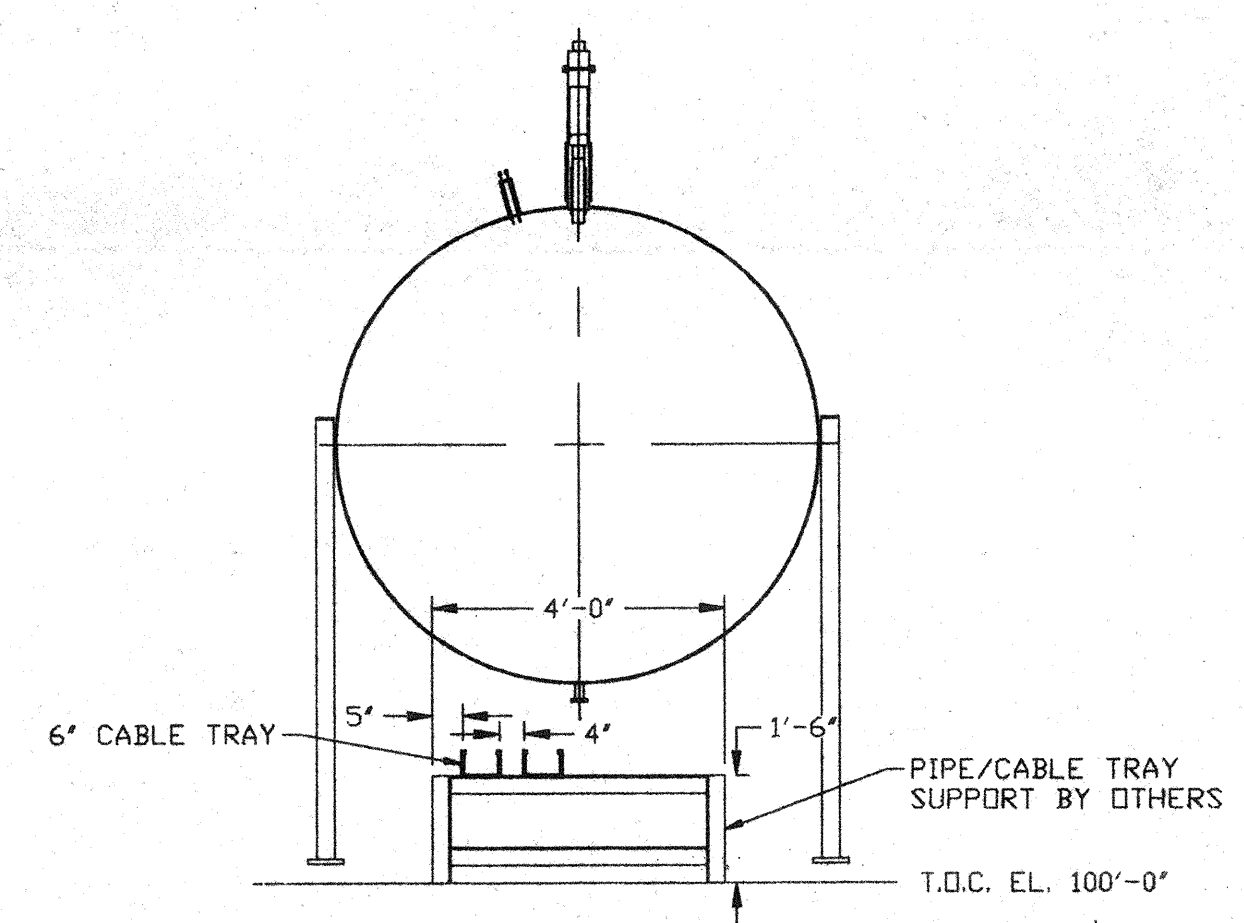
- NOTES:**
- 1.) ALL CABLETRAY LENGTHS ARE 12'-0" UNLESS OTHERWISE SPECIFIED.
 - 2.) ALL CABLE TRAY SHALL BE GROUNDED PER N.E.C.
 - 3.) ALL CABLE TRAY SHALL BE FIELD SUPPORTED.
 - 4.) CABLE TRAY FOR ION PUMP POWER CABLES SHALL BE LABELED "DANGER HIGH VOLTAGE".



VIEW A-A
SCALE: 3/8" = 1'-0"



VIEW B-B
SCALE: 3/8" = 1'-0"



VIEW C-C
SCALE: 3/8" = 1'-0"

NOT FOR CONSTRUCTION

D960600-00-V

APR 30 1996

<p>PROPRIETARY AND CONFIDENTIAL</p> <p>THIS DOCUMENT CONTAINS PROPRIETARY INFORMATION BELONGING TO PROCESS SYSTEMS INTERNATIONAL, INC. OR ITS AFFILIATED COMPANIES AND SHALL BE USED ONLY FOR THE PURPOSE FOR WHICH IT WAS SUPPLIED. IT SHALL NOT BE COPIED, REPRODUCED OR OTHERWISE USED, NOR SHALL SUCH INFORMATION BE FURNISHED IN WHOLE OR IN PART TO OTHERS EXCEPT IN ACCORDANCE WITH THE TERMS OF ANY AGREEMENT UNDER WHICH IT WAS SUPPLIED OR WITH THE PRIOR WRITTEN CONSENT OF PROCESS SYSTEMS INTERNATIONAL, INC. AND SHALL BE RETURNED UPON REQUEST.</p>		<p>UNLESS OTHERWISE SPECIFIED DIMENSIONS ARE IN INCHES</p> <p>TOLERANCES:</p> <p>FRACTIONAL ±</p> <p>ANGULAR/MACH ±0°-30' BEND ±2"</p> <p>TWO PLACE DECIMAL ±.01</p> <p>THREE PLACE DECIMAL ±.005</p> <p>FINISHED SURFACE RMS</p> <p>BREAK CORNERS IN OUT</p> <p>REMOVE ALL BURRS</p>		<p>DO NOT SCALE THIS DRAWING</p> <p>USED ON:</p> <p>NEXT ASS'Y:</p>		<p>0 ISSUE FOR FDR</p> <p>REV DESCRIPTION</p> <p>ISSUE DESCRIPTION</p>		<p>04.26.96 0129</p> <p>CHKD DRWN DATE DED#</p>		<p>PROCESS SYSTEMS INTERNATIONAL INC.</p> <p>20 WALKUP DR. WESTBOROUGH, MASSACHUSETTS 01581 USA</p>	
<p>V049-3-002 WASHINGTON OVERALL SITE PLAN</p> <p>V049-3-001 GENERAL NOTES & LEGEND</p>		<p>DESCRIPTION</p>		<p>0129</p>		<p>0129</p>		<p>CABLE TRAY PLAN</p> <p>LIGO VACUUM EQUIPMENT</p> <p>WASHINGTON SITE</p> <p>RIGHT END STATION</p>		<p>CAD FILE V0493502</p> <p>SIZE D</p> <p>DWG. NO. V049-3-502</p> <p>REV. 0</p>	
<p>DWG. NO. DESCRIPTION DWG. NO. DESCRIPTION</p>		<p>REFERENCE DRAWINGS</p>		<p>SCALE 3/16" = 1' - 0"</p>		<p>SHEET 1 OF 1</p>		<p>1</p>		<p>1</p>	