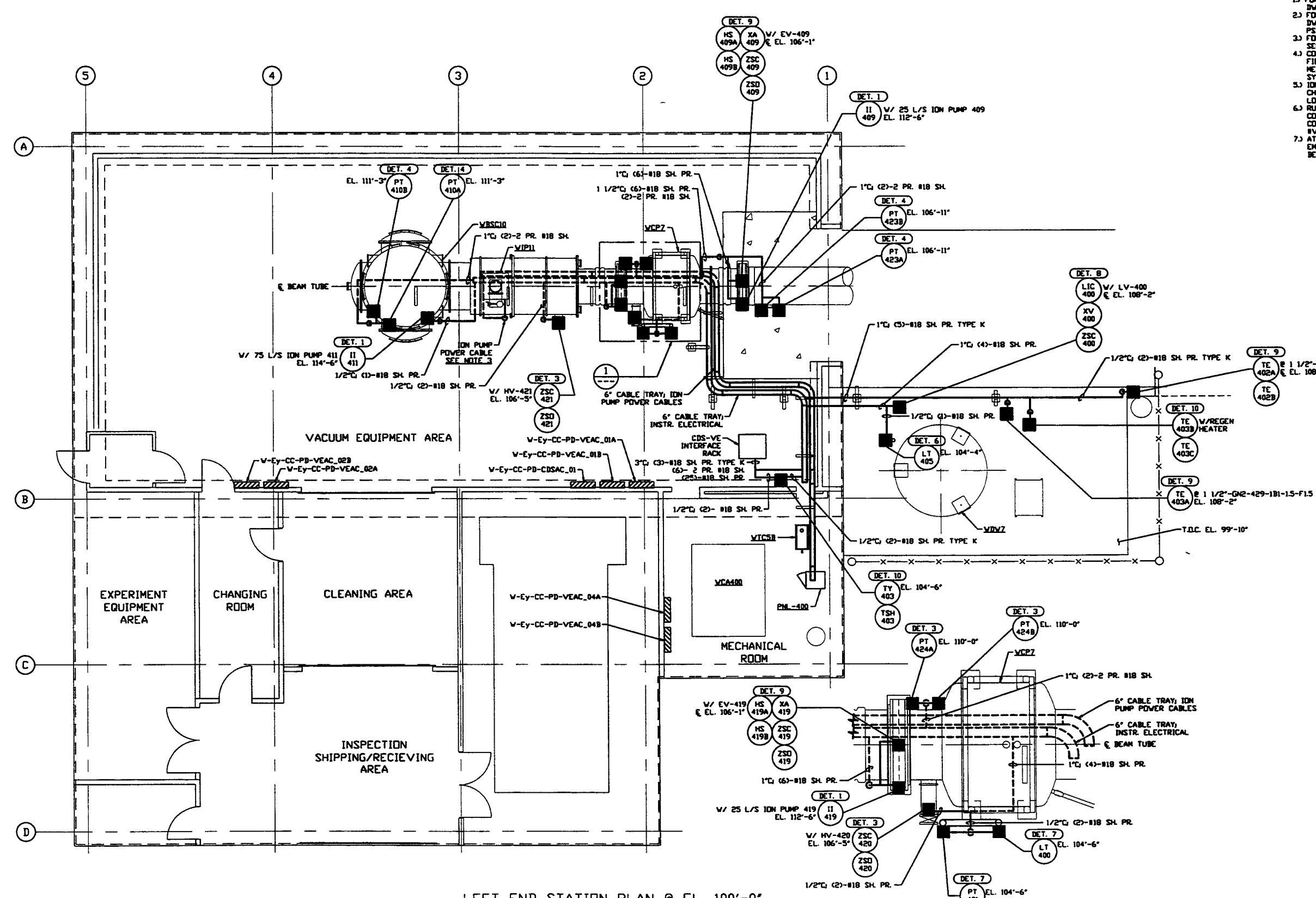


NOTES:

- 1) FOR PSI DVG. LIST & LEGEND SEE PSI DVG. #V049-3-001 SMT. 1
- 2) FOR LIST OF CIVIL CONTRACTOR REFERENCE DWGS. WITH CURRENT REVISIONS SEE PSI DVG. #V049-3-001 SMT. 2
- 3) FOR INSTRUMENT ELECTRICAL INSTALLATION DETAILS SEE PSI DVG. #V049-3-007
- 4) CONDUIT IS SHOWN DIAGRAMMATICALLY AND SHALL BE FIELD VERIFIED SO AS TO OPTIMIZE SUPPORTING MEANS AND TO AVOID INTERFERENCES WITH PIPING SYSTEMS.
- 5) ION PUMP POWER CABLES SHALL BE RUN IN 2" CABLE CHANNEL FROM ION PUMP DOWN TO 6" CABLE TRAY LOCATED UNDER BEAM TUBE.
- 6) RUN INSTR. ELECTRICAL CABLES IN (2)-2" UNDERGROUND CONDUITS TO CDS-VE INTERFACE RACK UNDERGROUND CONDUIT IS PROVIDED BY OTHERS. SEE PSI DVG. #V049-3-405 FOR STUB-UP LOCATIONS.
- 7) AT INDOOR INSTALLATIONS, CONDUIT SHALL BE ENT. AT OUTDOOR LOCATIONS, CONDUIT SHALL BE INC.



LEFT END STATION PLAN @ EL. 100'-0"

DETAIL 1 REF. THIS SHT.
SCALE: 3/8" = 1' - 0"

<p>PROPRIETARY AND CONFIDENTIAL</p> <p>THIS DOCUMENT CONTAINS PROPRIETARY INFORMATION BELONGING TO PROCESS SYSTEMS INTERNATIONAL, INC. OR ITS AFFILIATED COMPANIES AND SHALL BE USED ONLY FOR THE PURPOSE FOR WHICH IT WAS SUPPLIED. IT SHALL NOT BE COPIED, REPRODUCED OR OTHERWISE USED, NOR SHALL SUCH INFORMATION BE FURNISHED IN WHOLE OR IN PART TO OTHERS EXCEPT IN ACCORDANCE WITH THE TERMS OF ANY AGREEMENT UNDER WHICH IT WAS SUPPLIED OR WITH THE PRIOR WRITTEN CONSENT OF PROCESS SYSTEMS INTERNATIONAL, INC. AND SHALL BE RETURNED UPON REQUEST.</p>		<p>V049-3-001 INSTRUMENT PLAN WASHINGTON LEFT END STATION</p> <p>V049-3-007 INSTRUMENT ELECTRICAL INSTALLATION DETAILS</p> <p>V049-3-002 WASHINGTON OVERALL SITE PLAN</p> <p>V049-3-001 GENERAL NOTES & LEGEND</p> <p>V049-0-010 P & I D WASHINGTON LEFT END STATION</p> <p>V049-0-006 P & I D 80K CRYOPUMP</p> <p>DVG. NO. DESCRIPTION</p>	<p>V049-5-007 EQUIP. ARRANGEMENT WASHINGTON LEFT END STATION</p> <p>V049-3-408 CDS INTERFACE DIAGRAM</p> <p>V049-3-407 PNL-400 WIRING DIAGRAM</p> <p>DVG. NO. DESCRIPTION</p>	<p>UNLESS OTHERWISE SPECIFIED DIMENSIONS ARE IN INCHES</p> <p>TOLERANCES:</p> <p>FUNCTIONAL ±</p> <p>ANGULAR/FORM 1/4" ±</p> <p>FINISHED SURFACE DIMS UNLESS OTHERWISE SPECIFIED</p> <p>REMOVE ALL BURRS</p> <p>DO NOT SCALE THIS DRAWING</p> <p>USED ON:</p> <p>NEXT ASS'Y:</p>	<p>2 ISSUE FOR CONSTRUCTION</p> <p>1 ISSUE FOR FOR UPDATE & BID</p> <p>0 ISSUE FOR FOR</p>	<p>REV DESCRIPTION</p> <p>CHKD DRWN DATE DEC</p>	<p>DATE DEC</p> <p>05.12.97 0480</p> <p>11.25.96 0355</p> <p>04.26.96 0129</p>	<p>SCALE 3/16" = 1' - 0"</p> <p>SHEET 1 OF 1</p>
---	--	---	---	--	--	--	--	--

PROCESS SYSTEMS INTERNATIONAL, INC.
20 WALSH DR. WESTBOROUGH, MASSACHUSETTS 01581 USA

INSTRUMENT ELECTRICAL PLAN
LIGO VACUUM EQUIPMENT
WASHINGTON SITE
LEFT END STATION

CAB FILE V0493483 SIZE D DWG. NO. V049-3-403 REV. 2

SCALE 3/16" = 1' - 0" SHEET 1 OF 1