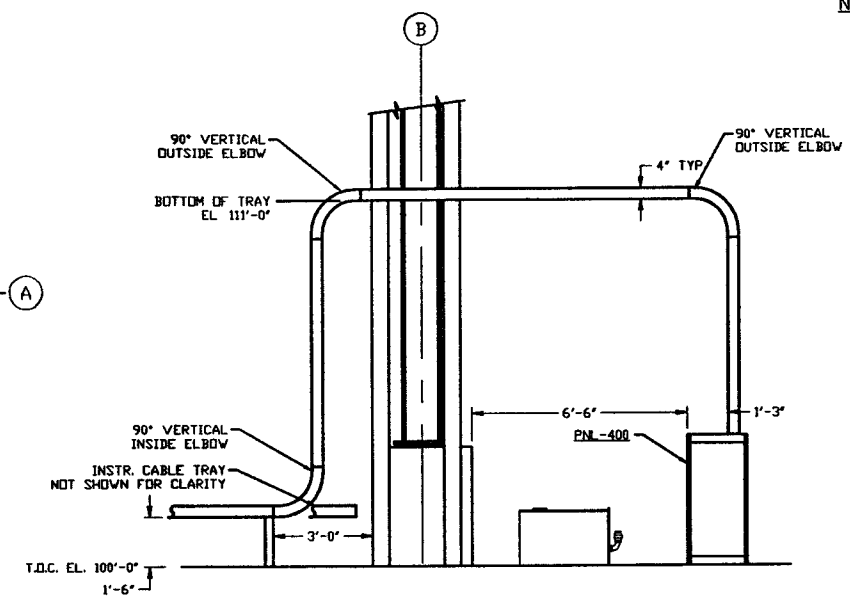
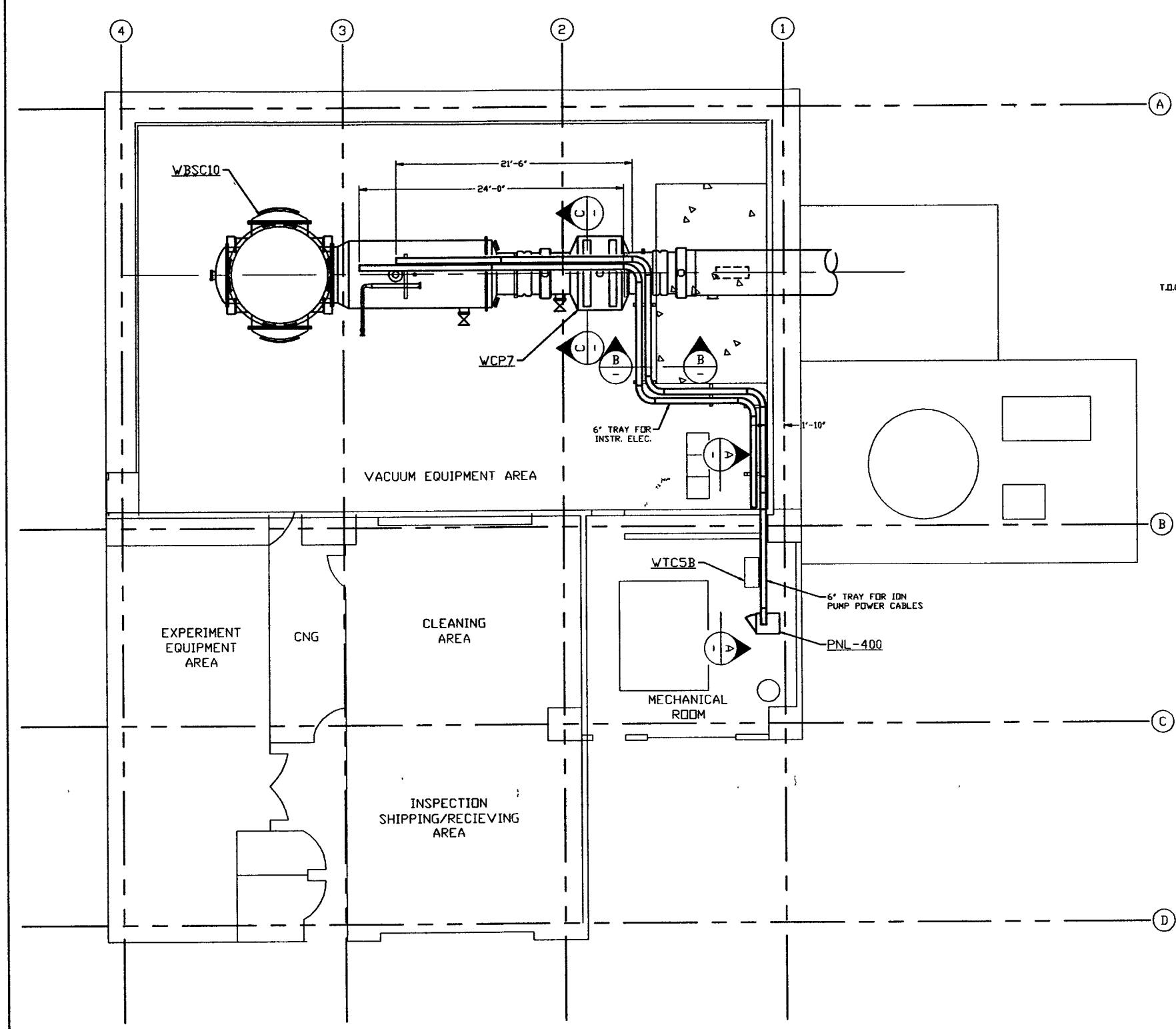
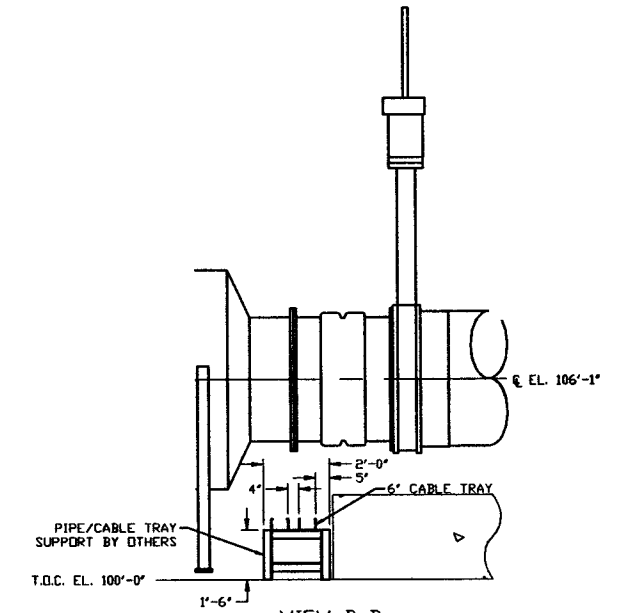


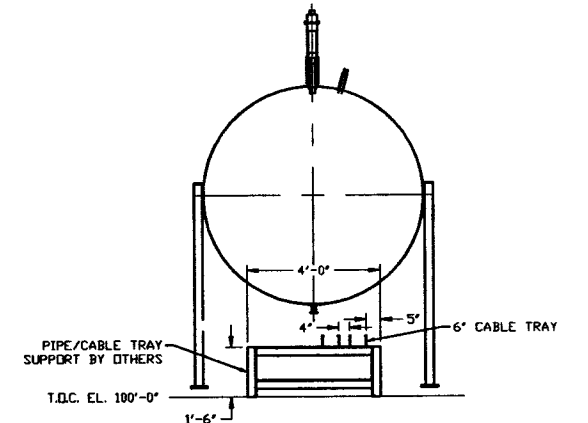
- NOTES:**
- 1.) ALL CABLETRAY LENGTHS ARE 12'-0" UNLESS OTHERWISE SPECIFIED.
 - 2.) ALL CABLE TRAY SHALL BE GROUNDED PER N.E.C.
 - 3.) ALL CABLE TRAY SHALL BE FIELD SUPPORTED.
 - 4.) CABLE TRAY FOR IDN PUMP POWER CABLES SHALL BE LABELED "DANGER HIGH VOLTAGE".



VIEW A-A
SCALE: 3/8" = 1'-0"



VIEW B-B
SCALE: 3/8" = 1'-0"



VIEW C-C
SCALE: 3/8" = 1'-0"

NOT FOR CONSTRUCTION

LIGO-D960592-00-V

PROPRIETARY AND CONFIDENTIAL

THIS DOCUMENT CONTAINS PROPRIETARY INFORMATION BELONGING TO PROCESS SYSTEMS INTERNATIONAL, INC. OR ITS AFFILIATED COMPANIES AND SHALL BE USED ONLY FOR THE PURPOSE FOR WHICH IT WAS SUPPLIED. IT SHALL NOT BE COPIED, REPRODUCED, OR OTHERWISE USED AND SHALL NOT BE DISCLOSED OR FURNISHED IN WHOLE OR IN PART TO OTHERS EXCEPT IN ACCORDANCE WITH THE TERMS OF ANY AGREEMENT UNDER WHICH IT WAS SUPPLIED OR WITH THE PRIOR WRITTEN CONSENT OF PROCESS SYSTEMS INTERNATIONAL, INC. AND SHALL BE RETURNED UPON REQUEST.

DWG. NO.	DESCRIPTION	DWG. NO.	DESCRIPTION
V049-3-002	WASHINGTON OVERALL SITE PLAN		
V049-3-001	GENERAL NOTES & LEGEND		
REFERENCE DRAWINGS			

USED ON	REV	DESCRIPTION	CHKD	BRWN	DATE	DEDN
DO NOT SCALE THIS DRAWING	0	ISSUE FOR FDR			04.26.96	0129
NEXT ASSY:						

PROCESS SYSTEMS INTERNATIONAL, INC.
20 WALKUP DR. WESTBOROUGH, MASSACHUSETTS 01581 USA

CABLE TRAY PLAN
LIGO VACUUM EQUIPMENT
WASHINGTON SITE
LEFT END STATION

CAB FILE V0493402	SIZE D	DWG NO. V049-3-402	REV. 0
SCALE 3/16" = 1' - 0"		SHEET 1 OF 1	