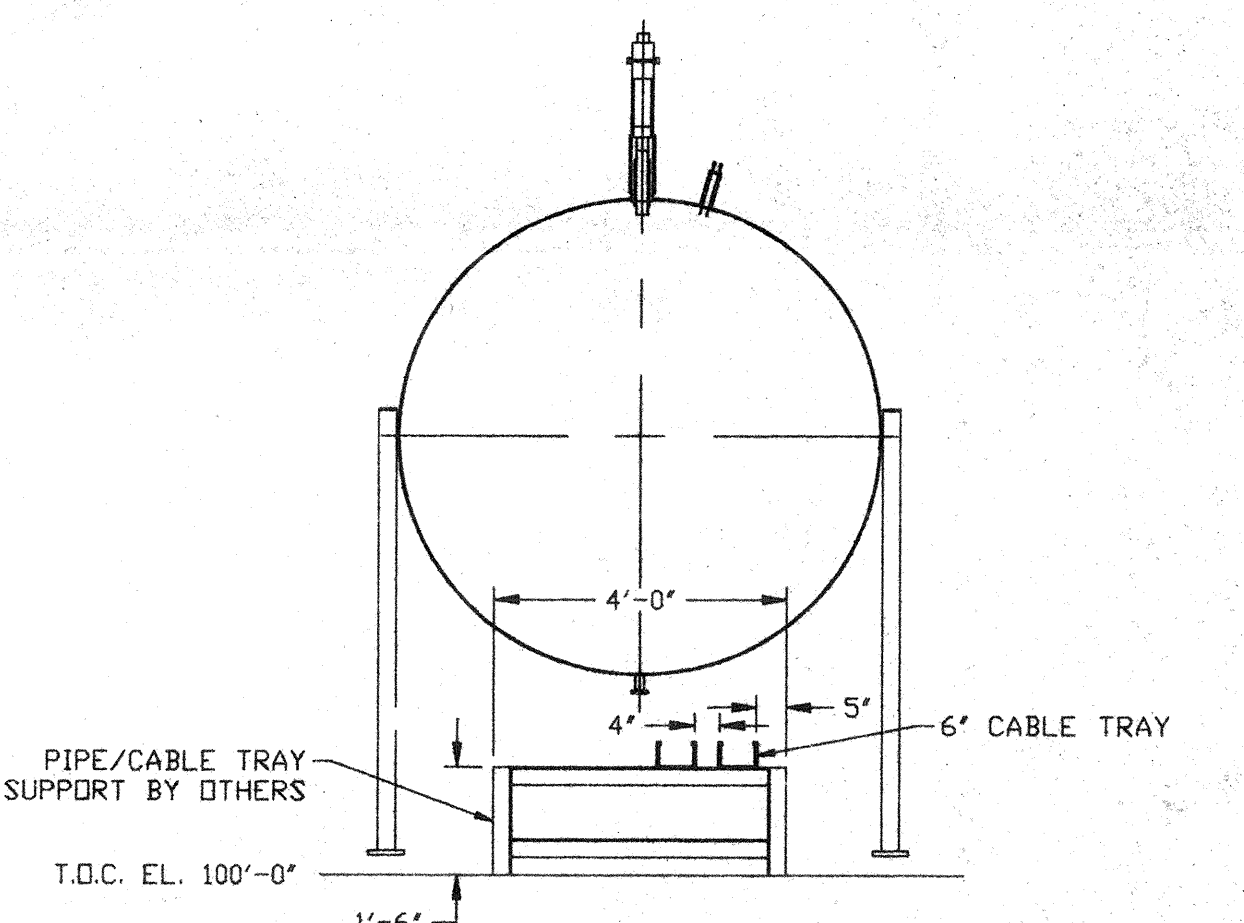
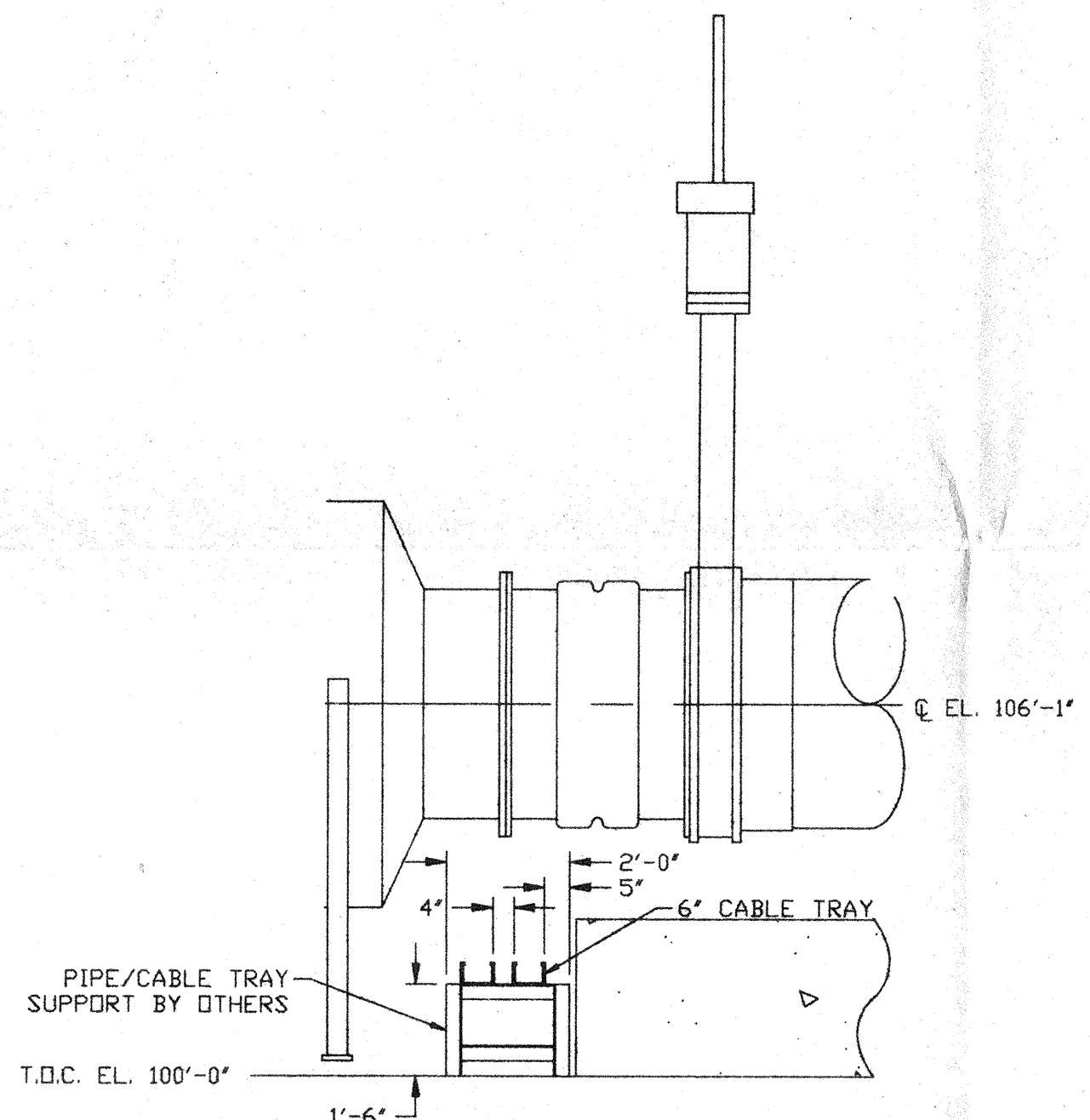
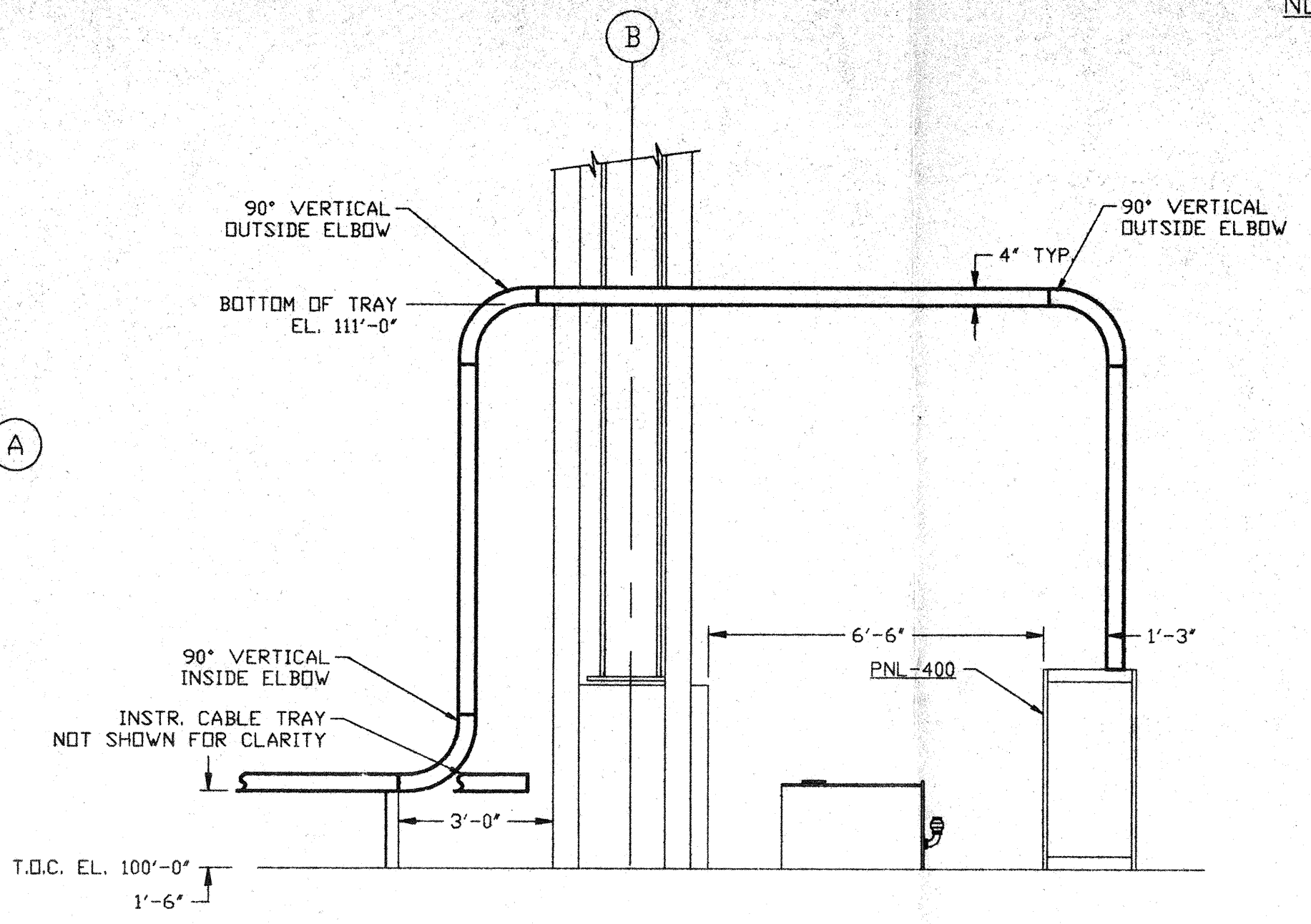
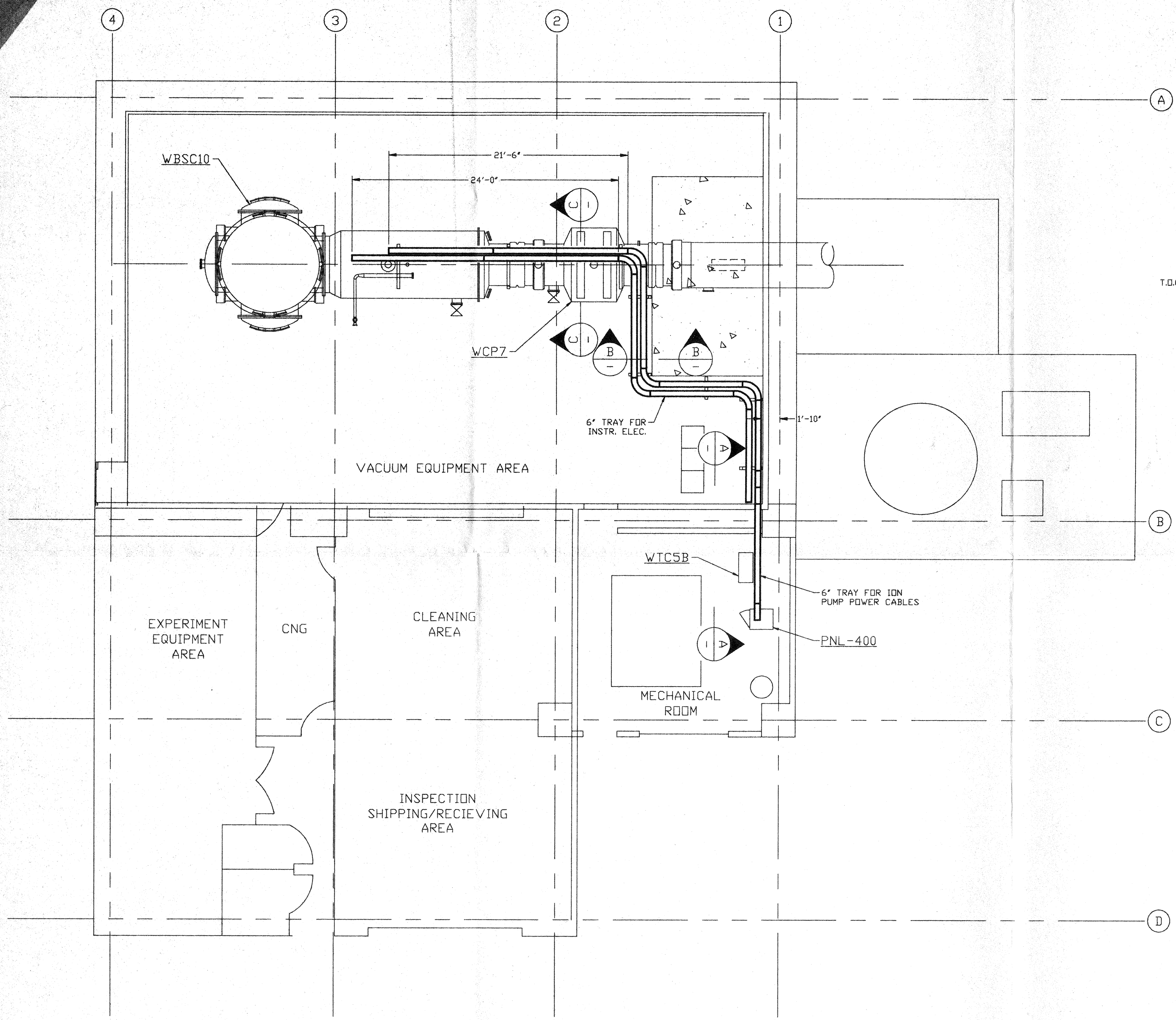


- NOTES:**
- 1.) ALL CABLETRAY LENGTHS ARE 12'-0" UNLESS OTHERWISE SPECIFIED.
  - 2.) ALL CABLE TRAY SHALL BE GROUNDED PER N.E.C.
  - 3.) ALL CABLE TRAY SHALL BE FIELD SUPPORTED.
  - 4.) CABLE TRAY FOR ION PUMP POWER CABLES SHALL BE LABELED 'DANGER HIGH VOLTAGE'.



NOT FOR CONSTRUCTION

APR 8 1996

**D960592-00-V**

**PROCESS SYSTEMS INTERNATIONAL INC.**  
20 WALKUP DR. WESTBOROUGH, MASSACHUSETTS 01581 USA

**CABLE TRAY PLAN**  
LIGD VACUUM EQUIPMENT  
WASHINGTON SITE  
LEFT END STATION

CAD FILE	SIZE	DWG NO.	REV.
V0493402	D	V049-3-402	0

DATE: 04.26.96  
DEW: 0129

SCALE: 3/16" = 1' - 0" SHEET: 1 OF 1

**PROPRIETARY AND CONFIDENTIAL**

THIS DOCUMENT CONTAINS PROPRIETARY INFORMATION BELONGING TO PROCESS SYSTEMS INTERNATIONAL, INC. OR ITS AFFILIATED COMPANIES AND SHALL BE USED ONLY FOR THE PURPOSE FOR WHICH IT WAS SUPPLIED. IT SHALL NOT BE COPIED, REPRODUCED OR OTHERWISE USED, NOR SHALL SUCH INFORMATION BE FURNISHED IN WHOLE OR IN PART TO OTHERS EXCEPT IN ACCORDANCE WITH THE TERMS OF ANY AGREEMENT UNDER WHICH IT WAS SUPPLIED OR WITH THE PRIOR WRITTEN CONSENT OF PROCESS SYSTEMS INTERNATIONAL, INC. AND SHALL BE RETURNED UPON REQUEST.

DWG. NO.	DESCRIPTION	DWG. NO.	DESCRIPTION
V049-3-002	WASHINGTON OVERALL SITE PLAN		
V049-3-001	GENERAL NOTES & LEGEND		
REFERENCE DRAWINGS			

REV	DESCRIPTION	CHKD	DRWN	DATE	DEW
0	ISSUE FOR FDR			04.26.96	0129

DO NOT SCALE THIS DRAWING

UNLESS OTHERWISE SPECIFIED DIMENSIONS ARE IN INCHES

TOLERANCES:

- FRACTIONAL ±
- ANGULAR/ARCH ± 10°-30° BEND ± 2°
- TWO PLACE DECIMAL ± .01
- THREE PLACE DECIMAL ± .005
- FINISHED SURFACE RWS
- BREAK CORNERS IN OUT
- REMOVE ALL BURRS