

NO.	DESCRIPTION	REV.	DATE	BY	CHKD.	DRWN.	DATE	BY	CHKD.	DRWN.	DATE	BY
1	ISSUE FOR FDR	0	04.26.96									

NO.	DESCRIPTION	REV.	DATE	BY	CHKD.	DRWN.	DATE	BY	CHKD.	DRWN.	DATE	BY
1	ISSUE FOR FDR	0	04.26.96									

UNLESS OTHERWISE SPECIFIED DIMENSIONS ARE IN INCHES  
 FRACTIONAL & DECIMALS TO BE SHOWN TO THE NEAREST 1/16" OR 0.015"  
 DIMENSIONS TO BE SHOWN TO THE NEAREST 0.015"  
 DIMENSIONS TO BE SHOWN TO THE NEAREST 0.015"  
 DIMENSIONS TO BE SHOWN TO THE NEAREST 0.015"

DO NOT SCALE THIS DRAWING

USED ON: \_\_\_\_\_

NEXT ASSY: \_\_\_\_\_

ISSUE DESCRIPTION: \_\_\_\_\_

SCALE: NONE

SHEET: 1 OF 2

PROCESS SYSTEMS INTERNATIONAL, INC.  
 20 WALCUP DR., WESTBOROUGH, MASSACHUSETTS 01581 USA

CDS INTERFACE DIAGRAM  
 LIGD VACUUM EQUIPMENT  
 WASHINGTON SITE  
 RIGHT MID STATION

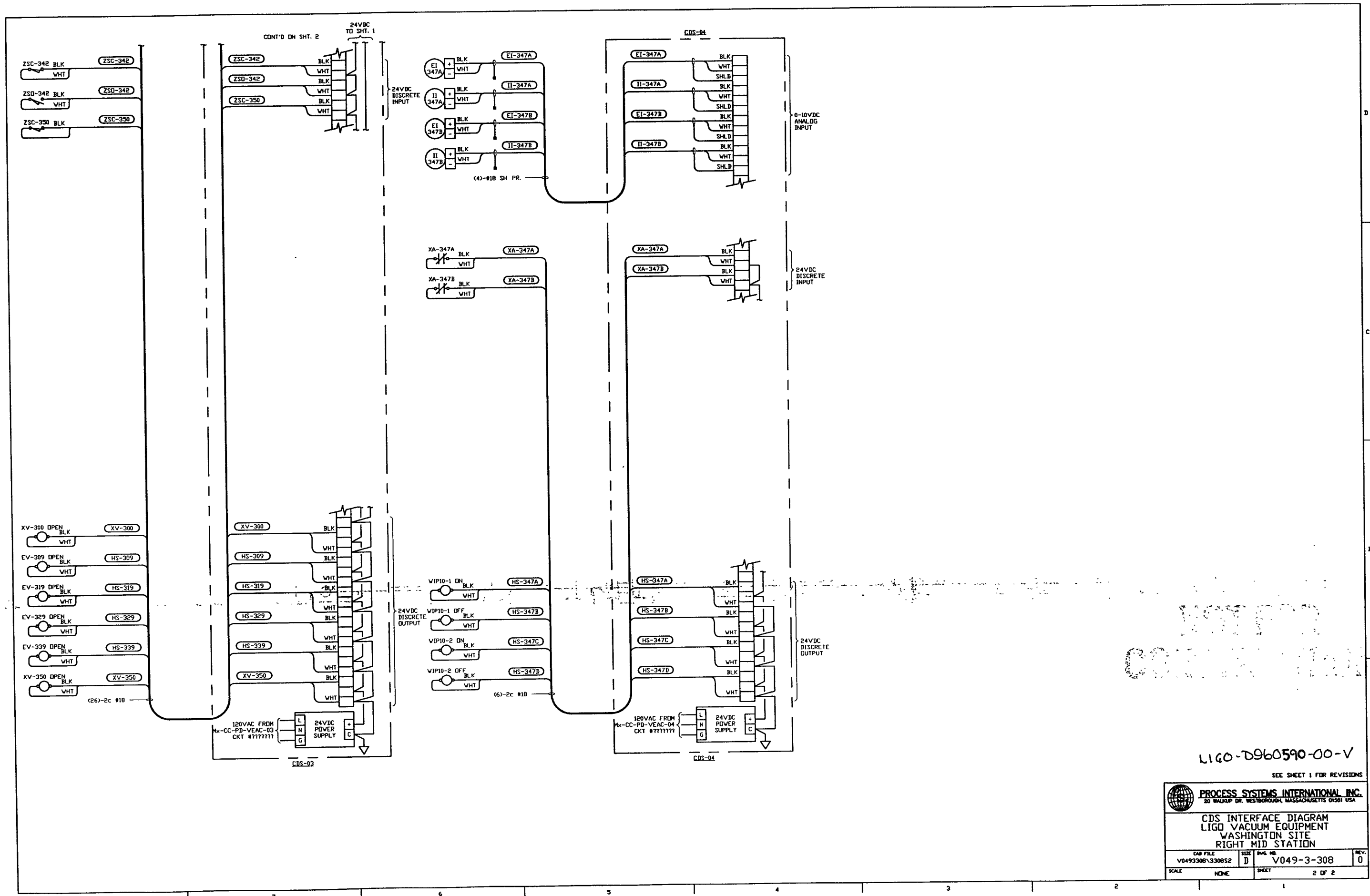
CAD FILE: V0493308\3308S1.D

SIZE: D

DWG. NO.: V049-3-308

REV: 0

L160-D960590-00-V



LIGO

LIGO-D960590-00-V

SEE SHEET 1 FOR REVISIONS

 <b>PROCESS SYSTEMS INTERNATIONAL, INC.</b> 20 WALKUP DR. WESTBOROUGH, MASSACHUSETTS 01581 USA			
<b>CDS INTERFACE DIAGRAM</b> <b>LIGO VACUUM EQUIPMENT</b> <b>WASHINGTON SITE</b> <b>RIGHT MID STATION</b>			
CAD FILE	SIZE	REV. NO.	REV.
V0493308\3308S2	D	V049-3-308	0
SCALE	NONE	SHEET	2 OF 2