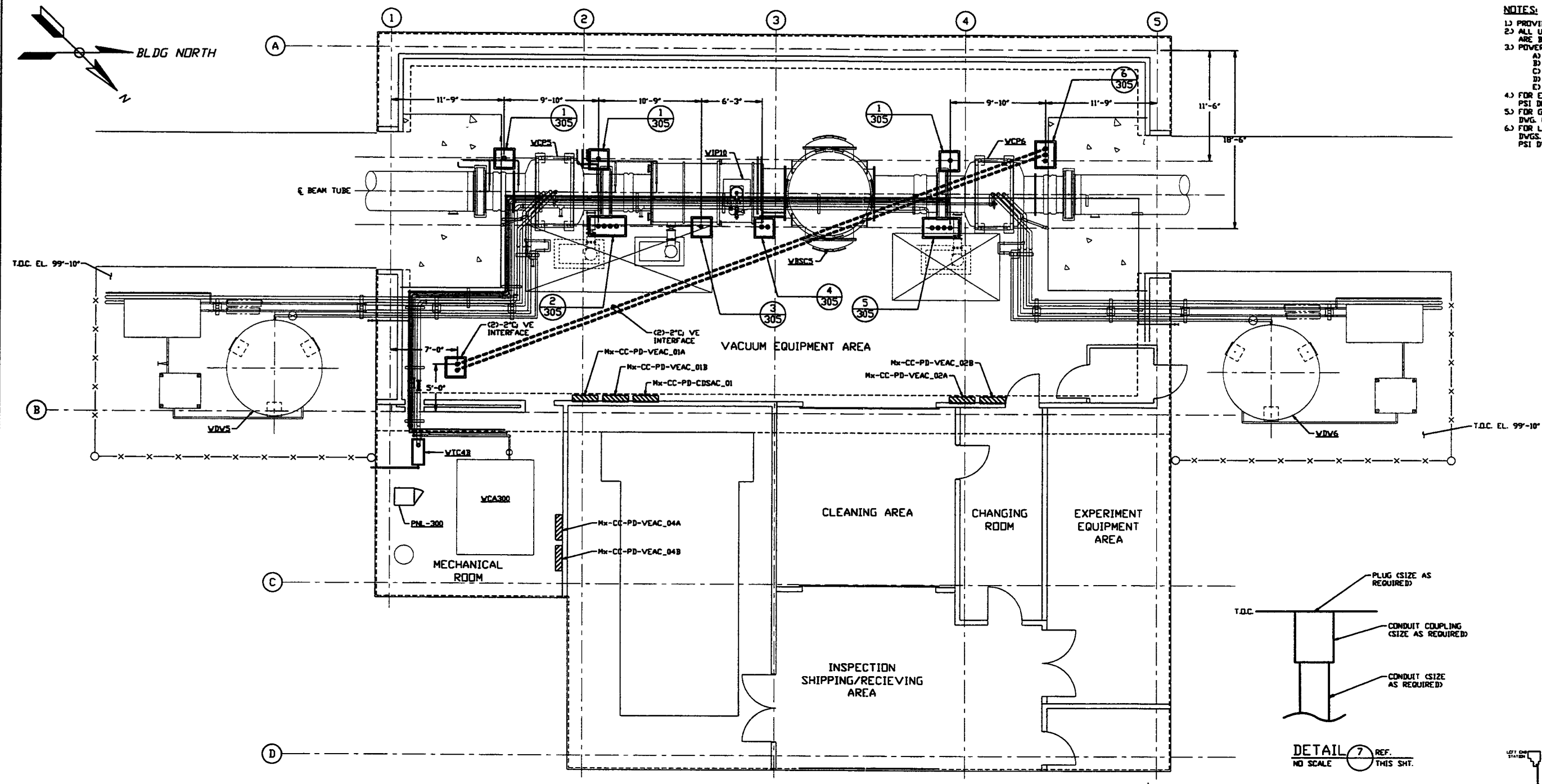
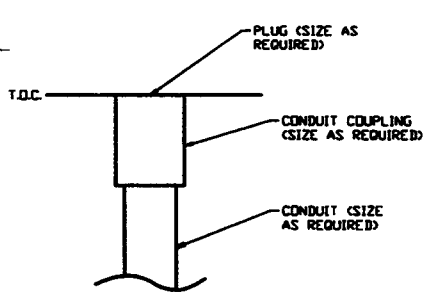


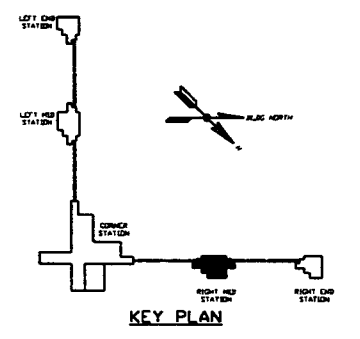
- NOTES:**
- 1) PROVIDE PULL TAPE IN EACH CONDUIT.
 - 2) ALL UNDERGROUND INSTALLATION AND DETAILS ARE BY OTHERS.
 - 3) POWER SOURCE SHALL BE AS FOLLOWS:
 A) BAKEOUT/CLEAN ROOM 480/277VAC
 B) GATE VALVE 480/277VAC
 C) GENERAL/ION PUMPS 120VAC
 D) BAKEOUT CONTROL 120VAC
 E) TURBO CART 208/120VAC
 - 4) FOR EQUIPMENT POWER REQUIREMENTS, REFER TO PSI DOCUMENT #V049-1-047.
 - 5) FOR GENERAL NOTES & LEGEND SEE PSI DWG. #V049-3-001 SHT. 1.
 - 6) FOR LIST OF CIVIL CONTRACTOR REFERENCE DWGS. WITH CURRENT REVISIONS SEE PSI DWG. #V049-3-001 SHT. 2.



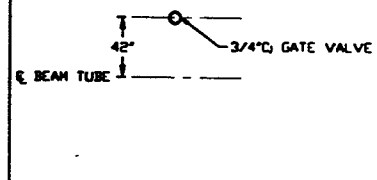
RIGHT MID STATION PLAN @ EL. 100'-0"



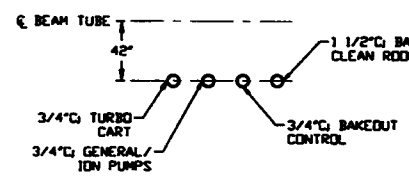
DETAIL 7 REF. THIS SHT.
NO SCALE



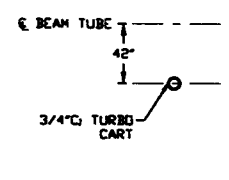
KEY PLAN



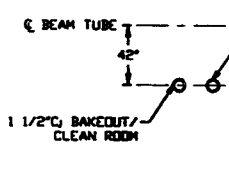
DETAIL 1 REF. THIS SHT.
NO SCALE



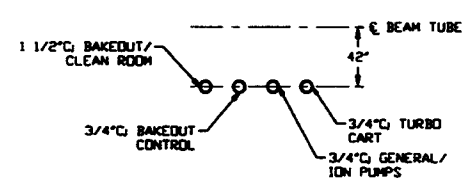
DETAIL 2 REF. THIS SHT.
NO SCALE



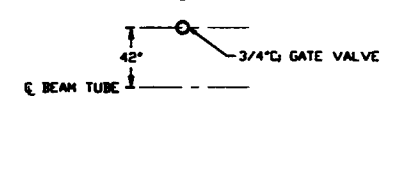
DETAIL 3 REF. THIS SHT.
NO SCALE



DETAIL 4 REF. THIS SHT.
NO SCALE



DETAIL 5 REF. THIS SHT.
NO SCALE



DETAIL 6 REF. THIS SHT.
NO SCALE

<p>PROPRIETARY AND CONFIDENTIAL</p> <p>THIS DOCUMENT CONTAINS PROPRIETARY INFORMATION BELONGING TO PROCESS SYSTEMS INTERNATIONAL, INC. OR ITS AFFILIATED COMPANIES AND SHALL BE USED ONLY FOR THE PURPOSE FOR WHICH IT WAS SUPPLIED. IT SHALL NOT BE COPIED, REPRODUCED OR OTHERWISE USED NOR SHALL SUCH INFORMATION BE FURNISHED IN WHOLE OR IN PART TO OTHERS EXCEPT IN ACCORDANCE WITH THE TERMS OF ANY AGREEMENT UNDER WHICH IT WAS SUPPLIED OR WITH THE PRIOR WRITTEN CONSENT OF PROCESS SYSTEMS INTERNATIONAL, INC. AND SHALL BE RETURNED UPON REQUEST.</p>		<p>UNLESS OTHERWISE SPECIFIED DIMENSIONS ARE IN INCHES</p> <p>TOLERANCES: FINISHES: HOLE APPROX 1/8" - 3/8" BORE 1/2" TWO PLACE DECIMAL & .00 FINISHED SURFACE AND BREAK CORNERS TO REMOVE ALL SHARP</p> <p>DO NOT SCALE THIS DRAWING</p>		<p>3 ISSUE FOR CONSTRUCTION</p> <p>2 ISSUE FOR FOR UPDATE & BID</p> <p>1 ISSUE FOR INSTALLATION</p> <p>0 ISSUE FOR FOR</p>		<p>REV</p> <p>DESCRIPTION</p> <p>CHKD</p> <p>BRVN</p> <p>DATE</p> <p>DEOR</p>		<p>05.12.97 0480</p> <p>11.25.96 0355</p> <p>08.15.96 0241</p> <p>04.26.96 0129</p>		<p>PROCESS SYSTEMS INTERNATIONAL, INC.</p> <p>20 WALKUP DR. WESTBOROUGH, MASSACHUSETTS 01581 USA</p> <p>ELECTRICAL CONDUIT STUB-UP PLAN</p> <p>LIGO VACUUM EQUIPMENT</p> <p>WASHINGTON SITE</p> <p>RIGHT MID STATION</p>		<p>CAD FILE V0493305</p> <p>SIZE D</p> <p>DWG. NO. V049-3-305</p> <p>REV. 3</p>	
DWG. NO.	DESCRIPTION	DWG. NO.	DESCRIPTION	ISSUE DESCRIPTION	CHKD	BRVN	DATE	DEOR	SCALE	SHEET	1 OF 1		
8	7	6	5	4	3	2			3/16" = 1' - 0"				