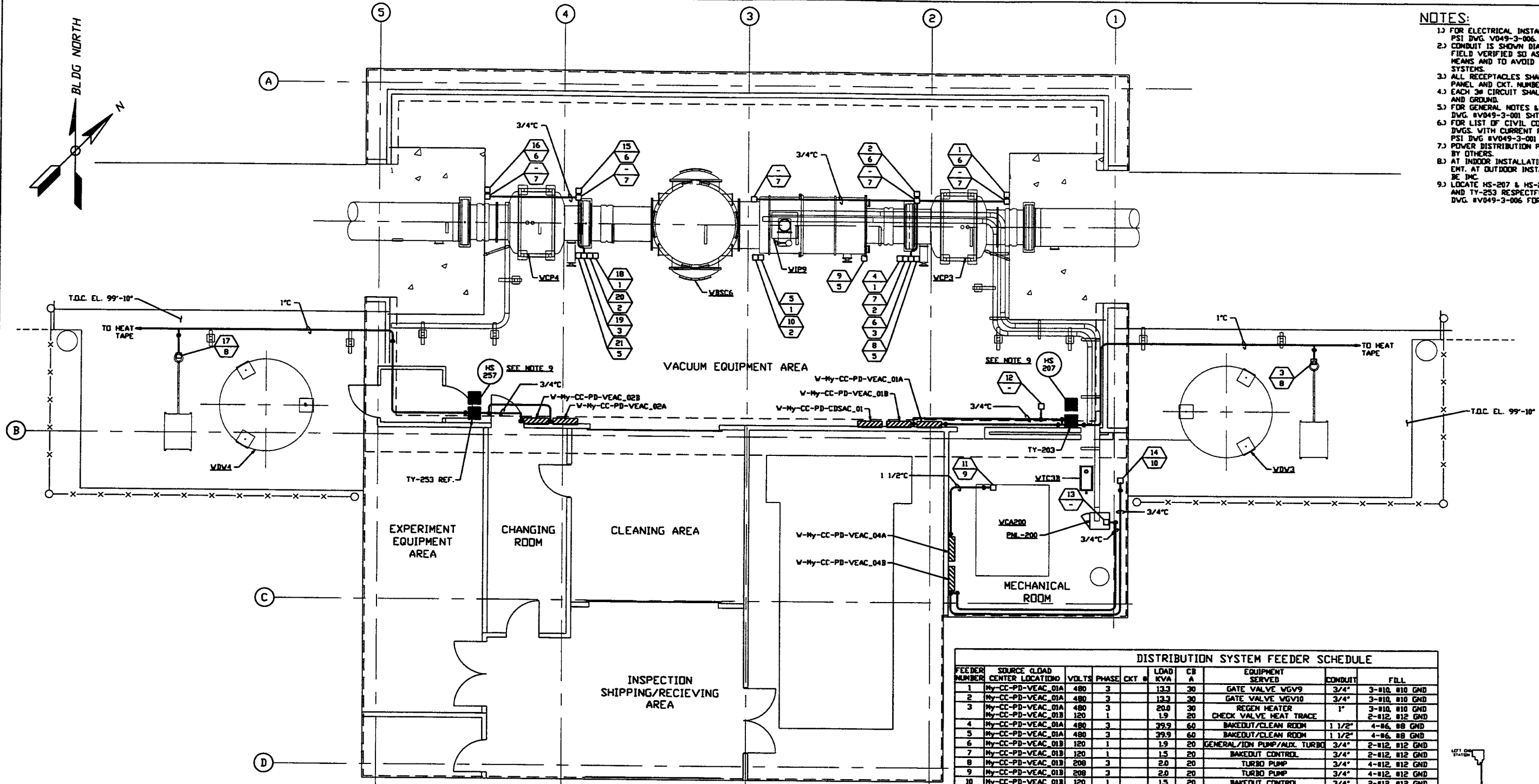
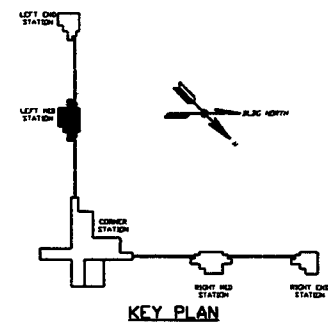


- NOTES:**
- FOR ELECTRICAL INSTALLATION DETAILS SEE PSI DVG. V049-3-006.
  - CONDUIT IS SHOWN DIAGRAMMATICALLY AND SHALL BE FIELD VERIFIED SO AS TO OPTIMIZE SUPPORTING MEANS AND TO AVOID INTERFERENCES WITH PIPING SYSTEMS.
  - ALL RECEPTACLES SHALL BE IDENTIFIED WITH PANEL AND CKT. NUMBER.
  - EACH 3Ø CIRCUIT SHALL HAVE DEDICATED NEUTRAL AND GROUND.
  - FOR GENERAL NOTES & LEGEND SEE PSI DVG. #V049-3-001 SHT. 1.
  - FOR LIST OF CIVIL CONTRACTOR REFERENCE DWGS. WITH CURRENT REVISIONS SEE PSI DVG. #V049-3-001 SHT. 2.
  - POWER DISTRIBUTION PANELS ARE FURNISHED BY OTHERS.
  - AT INDOOR INSTALLATIONS, CONDUIT SHALL BE ENT. AT OUTDOOR INSTALLATIONS, CONDUIT SHALL BE IMC.
  - LOCATE HS-207 & HS-257 ADJACENT TO TY-203 AND TY-253 RESPECTIVELY. SEE DETAIL 3 ON PSI DVG. #V049-3-006 FOR INSTALLATION.



LEFT MID STATION PLAN @ EL. 100'-0"

| DISTRIBUTION SYSTEM FEEDER SCHEDULE |                   |               |       |       |       |          |      |                             |         |                |
|-------------------------------------|-------------------|---------------|-------|-------|-------|----------|------|-----------------------------|---------|----------------|
| FEEDER NUMBER                       | SOURCE CENTER     | LOAD LOCATION | VOLTS | PHASE | CKT # | LOAD KVA | CB A | EQUIPMENT SERVED            | CONDUIT | FILL           |
| 1                                   | My-CC-PD-VEAC_01A |               | 480   | 3     | 13.3  | 30       |      | GATE VALVE VGV9             | 3/4"    | 3-Ø10, Ø10 GND |
| 2                                   | My-CC-PD-VEAC_01A |               | 480   | 3     | 13.3  | 30       |      | GATE VALVE VGV10            | 3/4"    | 3-Ø10, Ø10 GND |
| 3                                   | My-CC-PD-VEAC_01A |               | 480   | 3     | 20.0  | 30       |      | REGEN HEATER                | 1"      | 3-Ø10, Ø10 GND |
|                                     | My-CC-PD-VEAC_01B |               | 120   | 1     | 1.9   | 20       |      | CHECK VALVE HEAT TRACE      | 3/4"    | 2-Ø12, Ø12 GND |
| 4                                   | My-CC-PD-VEAC_01A |               | 480   | 3     | 39.9  | 60       |      | BAKEDOUT/CLEAN ROOM         | 1 1/2"  | 4-Ø6, Ø8 GND   |
| 5                                   | My-CC-PD-VEAC_01A |               | 480   | 3     | 39.9  | 60       |      | BAKEDOUT/CLEAN ROOM         | 1 1/2"  | 4-Ø6, Ø8 GND   |
| 6                                   | My-CC-PD-VEAC_01B |               | 120   | 1     | 1.9   | 20       |      | GENERAL/IDN PUMP/AUX. TURBO | 3/4"    | 2-Ø12, Ø12 GND |
| 7                                   | My-CC-PD-VEAC_01B |               | 120   | 1     | 1.5   | 20       |      | BAKEDOUT CONTROL            | 3/4"    | 2-Ø12, Ø12 GND |
| 8                                   | My-CC-PD-VEAC_01B |               | 208   | 3     | 2.0   | 20       |      | TURBO PUMP                  | 3/4"    | 4-Ø12, Ø12 GND |
| 9                                   | My-CC-PD-VEAC_01B |               | 208   | 3     | 2.0   | 20       |      | TURBO PUMP                  | 3/4"    | 4-Ø12, Ø12 GND |
| 10                                  | My-CC-PD-VEAC_01B |               | 120   | 1     | 1.5   | 20       |      | BAKEDOUT CONTROL            | 3/4"    | 2-Ø12, Ø12 GND |
| 11                                  | My-CC-PD-VEAC_04A |               | 480   | 3     | 25.0  | 80       |      | AIR COMPRESSOR              | 1 1/2"  | 3-Ø4, Ø6 GND   |
| 12                                  | My-CC-PD-VEAC_01B |               | 120   | 1     | 1.9   | 20       |      | VE CONTROL TRANSFORMER      | 3/4"    | 2-Ø12, Ø12 GND |
| 13                                  | My-CC-PD-VEAC_04B |               | 120   | 1     | 1.9   | 20       |      | 2500 L/S IDN PUMP           | 3/4"    | 2-Ø12, Ø12 GND |
| 14                                  | My-CC-PD-VEAC_04B |               | 208   | 3     | 4.0   | 30       |      | TURBO BACKING PUMP          | 3/4"    | 4-Ø10, Ø10 GND |
| 15                                  | My-CC-PD-VEAC_02A |               | 480   | 3     | 13.3  | 30       |      | GATE VALVE VGV11            | 3/4"    | 3-Ø10, Ø10 GND |
| 16                                  | My-CC-PD-VEAC_02A |               | 480   | 3     | 13.3  | 30       |      | GATE VALVE VGV12            | 3/4"    | 3-Ø10, Ø10 GND |
| 17                                  | My-CC-PD-VEAC_02A |               | 480   | 3     | 20.0  | 30       |      | REGEN HEATER                | 3/4"    | 3-Ø10, Ø10 GND |
|                                     | My-CC-PD-VEAC_02B |               | 120   | 1     | 1.9   | 20       |      | CHECK VALVE HEAT TRACE      | 3/4"    | 2-Ø12, Ø12 GND |
| 18                                  | My-CC-PD-VEAC_02A |               | 480   | 3     | 39.9  | 60       |      | BAKEDOUT/CLEAN ROOM         | 1 1/2"  | 4-Ø6, Ø8 GND   |
| 19                                  | My-CC-PD-VEAC_02B |               | 120   | 1     | 1.9   | 20       |      | GENERAL/IDN PUMP/AUX. TURBO | 3/4"    | 2-Ø12, Ø12 GND |
| 20                                  | My-CC-PD-VEAC_02B |               | 120   | 1     | 1.5   | 20       |      | BAKEDOUT CONTROL            | 3/4"    | 2-Ø12, Ø12 GND |
| 21                                  | My-CC-PD-VEAC_02B |               | 208   | 3     | 2.0   | 20       |      | TURBO PUMP                  | 3/4"    | 4-Ø12, Ø12 GND |



| DWG. NO.   | DESCRIPTION                                | DWG. NO. | DESCRIPTION |
|------------|--|----------|-------------|
| V049-3-006 | ELECTRICAL INSTALLATION DETAILS            |          |             |
| V049-3-005 | IDN PUMP CONTROLLER CABINET WIRING DIAGRAM |          |             |
| V049-3-002 | WASHINGTON OVERALL SITE PLAN               |          |             |
| V049-3-001 | GENERAL NOTES & LEGEND                     |          |             |

| REV | DESCRIPTION                | CHKD | DRWN | DATE     | DEDR |
|-----|----------------------------|------|------|----------|------|
| 2   | ISSUE FOR CONSTRUCTION     |      |      | 05.12.97 | 0480 |
| 1   | ISSUE FOR FDR UPDATE & BID |      |      | 11.25.96 | 0355 |
| 0   | ISSUE FOR FDR              |      |      | 04.26.96 | 0129 |

**PROCESS SYSTEMS INTERNATIONAL INC.**  
20 WALKUP DR. WESTBOROUGH, MASSACHUSETTS 01581 USA

**POWER PLAN**  
LIGO VACUUM EQUIPMENT  
WASHINGTON SITE  
LEFT MID STATION

CAB FILE: V0493204  
SIZE: D  
DWG. NO.: V049-3-204  
REV: 2

SCALE: 3/16" = 1' - 0"  
SHEET: 1 OF 1