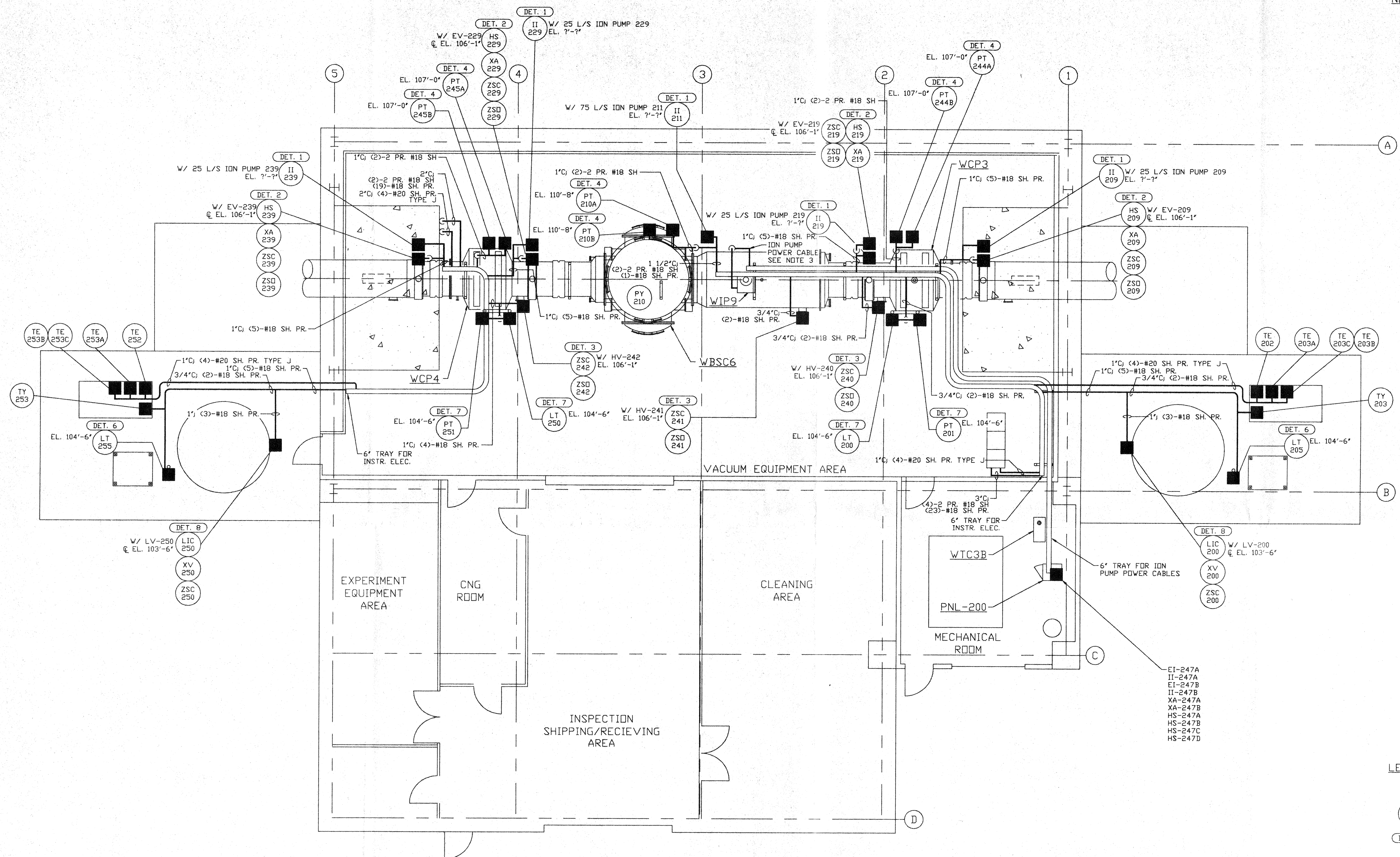


**NOTES:**

- 1) FOR INSTRUMENT ELECTRICAL INSTALLATION DETAILS SEE PSI DWG. V049-3-007.
- 2) CONDUIT IS SHOWN DIAGRAMMATICALLY AND SHALL BE FIELD VERIFIED SO AS TO OPTIMIZE SUPPORTING MEANS AND TO AVOID INTERFERENCES WITH PIPING SYSTEMS.
- 3) ION PUMP POWER CABLES SHALL BE RUN IN 2" CABLE CHANNEL FROM ION PUMP DOWN TO 4' TRAY LOCATED UNDER BEAM TUBE.



**LEGEND**

- INSTRUMENT ELECTRICAL CONNECTION
- INSTRUMENT IDENTIFICATION
- INSTALLATION DETAIL (SEE NOTE 1)

APR 8 1996

0960577-00-V

PROPRIETARY AND CONFIDENTIAL THIS DOCUMENT CONTAINS PROPRIETARY INFORMATION BELONGING TO PROCESS SYSTEMS INTERNATIONAL, INC. OR ITS AFFILIATED COMPANIES AND SHALL BE USED ONLY FOR THE PURPOSE FOR WHICH IT WAS SUPPLIED. IT SHALL NOT BE COPIED, REPRODUCED OR OTHERWISE USED, NOR SHALL SUCH INFORMATION BE FURNISHED IN WHOLE OR IN PART TO OTHERS EXCEPT IN ACCORDANCE WITH THE TERMS OF ANY AGREEMENT UNDER WHICH IT WAS SUPPLIED OR WITH THE PRIOR WRITTEN CONSENT OF PROCESS SYSTEMS INTERNATIONAL, INC. AND SHALL BE RETURNED UPON REQUEST.	V049-3-307 PNL-300 WIRING DIAGRAM V049-3-301 INSTRUMENT PLAN WASHINGTON RIGHT MID STATION V049-3-007 INSTRUMENT ELECTRICAL INSTALLATION DETAILS V049-3-002 WASHINGTON OVERALL SITE PLAN V049-3-001 GENERAL NOTES & LEGEND V049-0-016 P & I D WASHINGTON RIGHT MID STATION	V049-3-308 CDS INTERFACE DIAGRAM V049-3-001 EQUIP. ARRANGEMENT WASHINGTON LEFT MID STATION V049-3-001 P & I D WASHINGTON RIGHT MID STATION	UNLESS OTHERWISE SPECIFIED DIMENSIONS ARE IN INCHES. TOLERANCES: FRACTIONAL ± ANGULAR ± 30'-30" BEND ± 2" TWO PLACE DECIMAL ± .01 THREE PLACE DECIMAL ± .005 FINISHED SURFACE: RMS BREAK CORNERS IN OUT REMOVE ALL BURRS DO NOT SCALE THIS DRAWING USED ON: NEXT ASS'Y:	0 ISSUE FOR FDR REV DESCRIPTION CHKD DRWN DATE DEC#	04.26.96 0129 D W F B SCALE 3/16" = 1' - 0" SHEET 1 OF 1
REFERENCE DRAWINGS			ISSUE DESCRIPTION		

PROCESS SYSTEMS INTERNATIONAL, INC.

20 WALKUP DR. WESTBOROUGH, MASSACHUSETTS 01581 USA

INSTRUMENT ELECTRICAL PLAN  
LIGO VACUUM EQUIPMENT  
WASHINGTON SITE  
LEFT MID STATION

CAD FILE: V0493203 SIZE: D DWG. NO.: V049-3-203 REV: 0