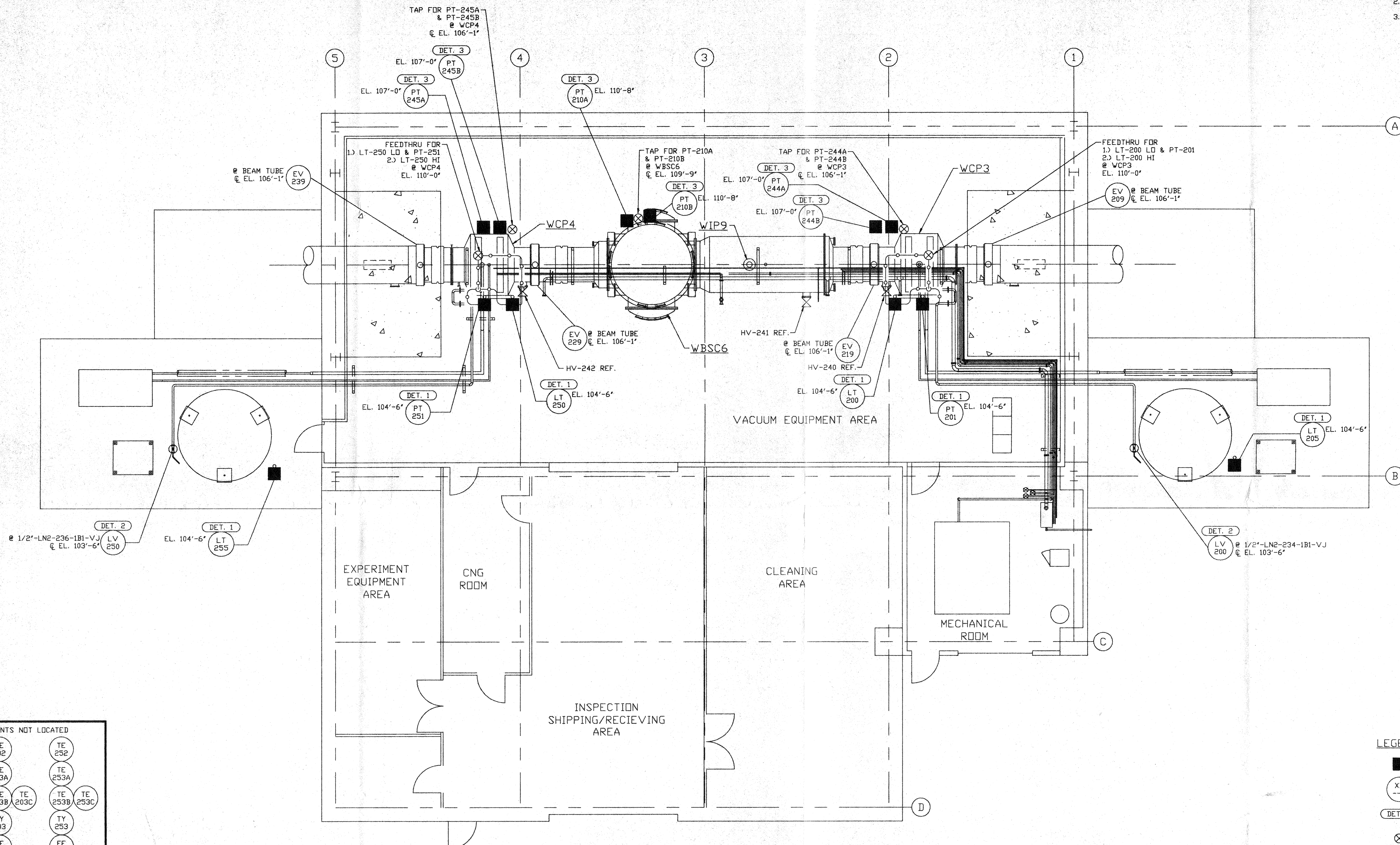


NOTES:

- 1.) FOR INSTRUMENT INSTALLATION DETAILS SEE PSI DWG. #V049-3-008
- 2.) ALL INSTRUMENT AIR & PROCESS TUBING SHALL BE 3/8" O.D. X .049 THK SEAMLESS SSTL TYPE 316.
- 3.) TUBING ROUTING SHOWN ON PLAN IS DIAGRAMMATICAL AND SHALL BE FIELD VERIFIED SO AS TO OPTIMIZE SUPPORTING MEANS AND TO AVOID INTERFERENCES WITH CONDUIT & PIPING SYSTEMS.



NOT FOR CONSTRUCTION

**INSTRUMENTS NOT LOCATED**

TE 202	TE 252
TE 203A	TE 253A
TE 203B	TE 253B
TE 203C	TE 253C
TY 203	TY 253
FE 204	FE 254
FI 204	FI 254
PCV 210	

**LEGEND**

- INSTRUMENT LOCATION
- ⊗ INSTRUMENT IDENTIFICATION
- ⊗ DET. X INSTALLATION DETAIL (SEE NOTE 1)
- ⊗ PROCESS TAP
- PROCESS TUBING (SEE NOTE 2)

APR 30 1998

0960575-00-V

<p><b>PROPRIETARY AND CONFIDENTIAL</b></p> <p>THIS DOCUMENT CONTAINS PROPRIETARY INFORMATION BELONGING TO PROCESS SYSTEMS INTERNATIONAL, INC. OR ITS AFFILIATED COMPANIES AND SHALL BE USED ONLY FOR THE PURPOSE FOR WHICH IT WAS SUPPLIED. IT SHALL NOT BE COPIED, REPRODUCED OR OTHERWISE USED, NOR SHALL SUCH INFORMATION BE FURNISHED IN WHOLE OR IN PART TO OTHERS EXCEPT IN ACCORDANCE WITH THE TERMS OF ANY AGREEMENT UNDER WHICH IT WAS SUPPLIED OR WITH THE PRIOR WRITTEN CONSENT OF PROCESS SYSTEMS INTERNATIONAL, INC. AND SHALL BE RETURNED UPON REQUEST.</p>		<p>????? EQUIP. ARRANGEMENT WASHINGTON LEFT MID STATION</p> <p>V049-3-008 INSTRUMENT INSTALLATION DETAILS</p> <p>V049-3-002 WASHINGTON OVERALL SITE PLAN</p> <p>V049-3-001 GENERAL NOTES &amp; LEGEND</p> <p>V049-0-011 P &amp; I D WASHINGTON LEFT MID STATION</p>	<p>UNLESS OTHERWISE SPECIFIED DIMENSIONS ARE IN INCHES</p> <p>TOLERANCES:</p> <p>FRACTIONAL ±</p> <p>ANGULAR MACH ± 30'-30" BEND ± 2'</p> <p>TWO PLACE DECIMAL ± .01</p> <p>THREE PLACE DECIMAL ± .005</p> <p>FINISHED SURFACE RMS</p> <p>BREAK CORNERS IN DWT</p> <p>REMOVE ALL BURRS</p>	<p>DO NOT SCALE THIS DRAWING 0 ISSUE FOR FDR</p> <p>USED ON: REV DESCRIPTION</p> <p>NEXT ASS'Y:</p>	<p>ISSUE DESCRIPTION</p> <p>CHKD DRWN DATE DED#</p> <p>04.26.96 0129</p>	<p><b>PROCESS SYSTEMS INTERNATIONAL INC.</b></p> <p>20 WALKUP DR. WESTBOROUGH, MASSACHUSETTS 01581 USA</p> <p><b>INSTRUMENT PLAN</b></p> <p>LIGO VACUUM EQUIPMENT</p> <p>WASHINGTON SITE</p> <p>LEFT MID STATION</p>	<p>CAD FILE V0493201</p> <p>SIZE D</p> <p>DWG. NO. V049-3-201</p> <p>REV. 0</p> <p>SHEET 1 OF 1</p>
---	--	---	--	---	--	--	---