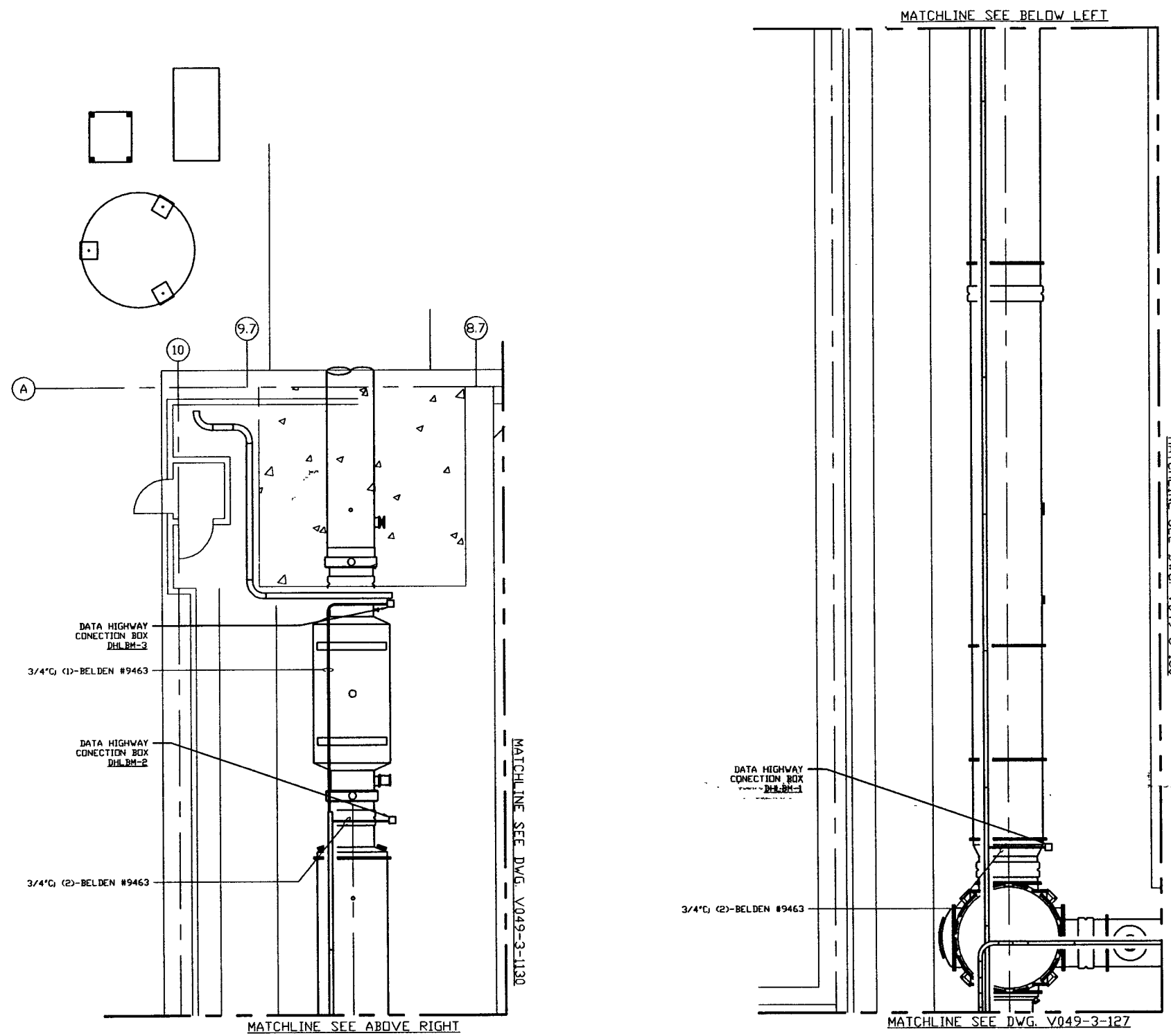


- NOTES:
- 1.) DATA HIGHWAY EXTENSION CABLES FOR BAKEDOUT CART TO CONNECTION BOX ARE PROVIDED V/CART.
 - 2.) FOR DATA HIGHWAY INTERCONNECTING WIRING SEE DWG. V049-3-131.
 - 3.) IDENTIFY ALL CONNECTION BOXES WITH BLACK PHENOLIC TAGS WITH WHITE LETTERING. LETTERING SHALL BE 3/8" HIGH.
 - 4.) LOCATE CONNECTION BOXES ADJACENT TO BAKEDOUT CART CONTROL POWER. SEE PSI DWG. #V049-3-117



NOT FOR CONSTRUCTION

LIGO-D960571-00-V

PROPRIETARY AND CONFIDENTIAL
 THIS DOCUMENT CONTAINS PROPRIETARY INFORMATION BELONGING TO PROCESS SYSTEMS INTERNATIONAL, INC. OR ITS AFFILIATED COMPANIES AND SHALL BE USED ONLY FOR THE PURPOSE FOR WHICH IT WAS SUPPLIED. IT SHALL NOT BE COPIED, REPRODUCED OR OTHERWISE USED, NOR SHALL SUCH INFORMATION BE FURNISHED IN WHOLE OR IN PART TO OTHERS EXCEPT IN ACCORDANCE WITH THE TERMS OF ANY AGREEMENT UNDER WHICH IT WAS SUPPLIED OR WITH THE PRIOR WRITTEN CONSENT OF PROCESS SYSTEMS INTERNATIONAL, INC. AND SHALL BE RETURNED UPON REQUEST.

V049-3-131	DATA HIGHWAY INTERCONNECTION DIAGRAM		
V049-3-117	POWER PLAN LEFT BEAM MANIFOLD		
V049-3-107	CABLE TRAY PLAN LEFT BEAM MANIFOLD		
V049-3-002	WASHINGTON OVERALL SITE PLAN		
V049-3-001	GENERAL NOTES & LEGEND		
DWG. NO.	DESCRIPTION	DWG. NO.	DESCRIPTION
REFERENCE DRAWINGS			

UNLESS OTHERWISE SPECIFIED DIMENSIONS ARE IN INCHES																			
TOLERANCES: FUNCTIONAL & INSURANCE 40"-50" BOND AS TWO PLACE DECIMAL & IN THREE PLACE DECIMAL & .005 FINISHED SURFACE DIMS BREAK CORNERS IN BUT REMOVE ALL BURRS																			
DO NOT SCALE THIS DRAWING	0	ISSUE FOR FDR																	
USED IN:	REV	DESCRIPTION																	
NEXT ASSY:		ISSUE DESCRIPTION																	

 PROCESS SYSTEMS INTERNATIONAL, INC. 20 WALKUP DR. WESTBOROUGH, MASSACHUSETTS 01581 USA			
DATA HIGHWAY PLAN LIGO VACUUM EQUIPMENT WASHINGTON SITE LEFT BEAM MANIFOLD SECTION			
CAD FILE V0493128	SIZE D	DWG. NO. V049-3-128	REV. 0
SCALE 3/16" = 1' - 0"	SHEET 1 OF 1		