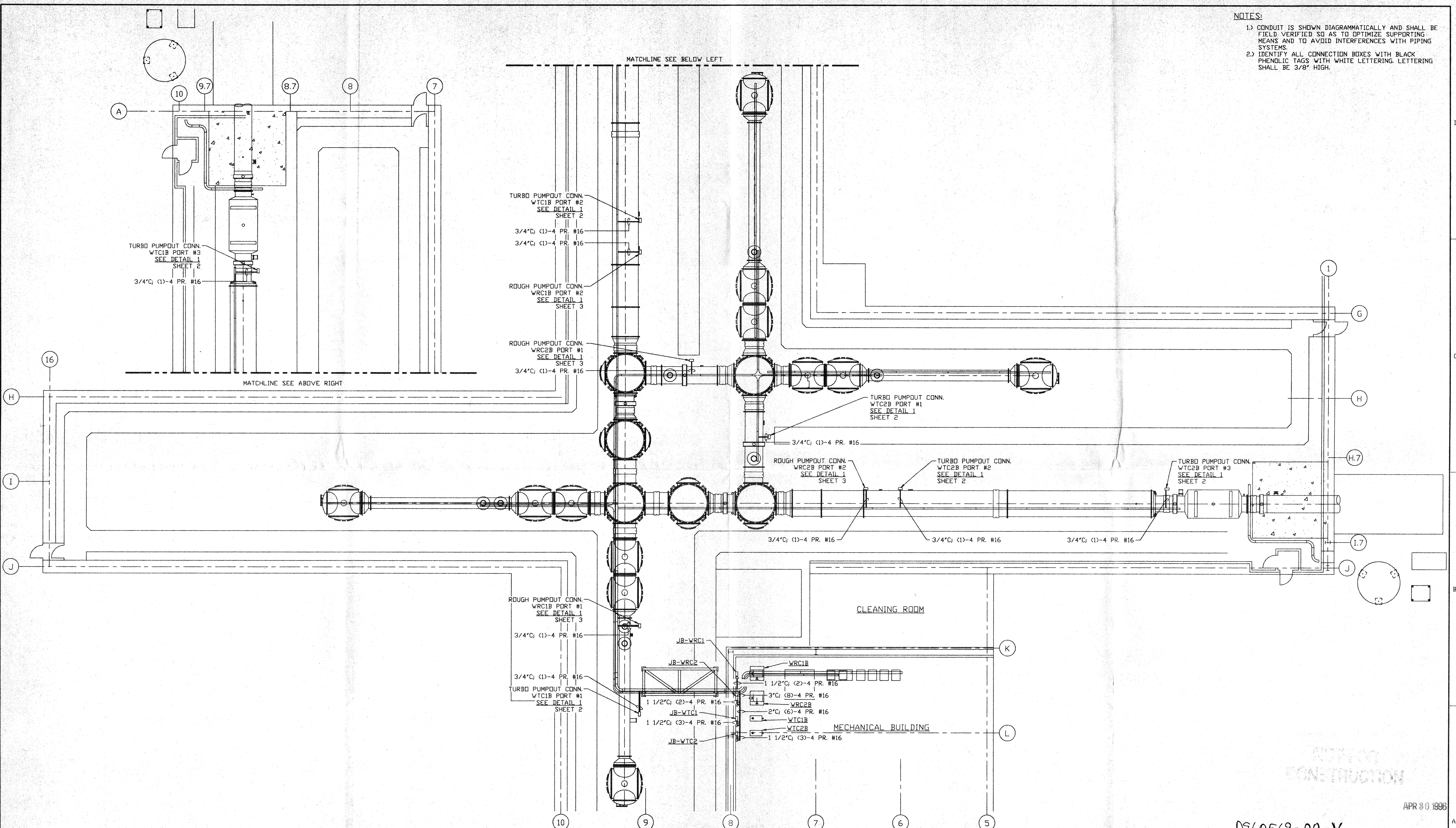


- NOTES:**
- 1) CONDUIT IS SHOWN DIAGRAMMATICALLY AND SHALL BE FIELD VERIFIED SO AS TO OPTIMIZE SUPPORTING MEANS AND TO AVOID INTERFERENCES WITH PIPING SYSTEMS.
 - 2) IDENTIFY ALL CONNECTION BOXES WITH BLACK PHENOLIC TAGS WITH WHITE LETTERING. LETTERING SHALL BE 3/8" HIGH.



D960569-00-V

DWG. NO.	DESCRIPTION	DWG. NO.	DESCRIPTION
V049-3-109	CABLE TRAY PLAN DIAGONAL SECTION		
V049-3-108	CABLE TRAY PLAN RIGHT BEAM MANIFOLD		
V049-3-107	CABLE TRAY PLAN LEFT BEAM MANIFOLD		
V049-3-106	CABLE TRAY PLAN VERTEX SECTION		
V049-5-001	EQUIP. ARRANGEMENT WASHINGTON VERTEX SECTION		

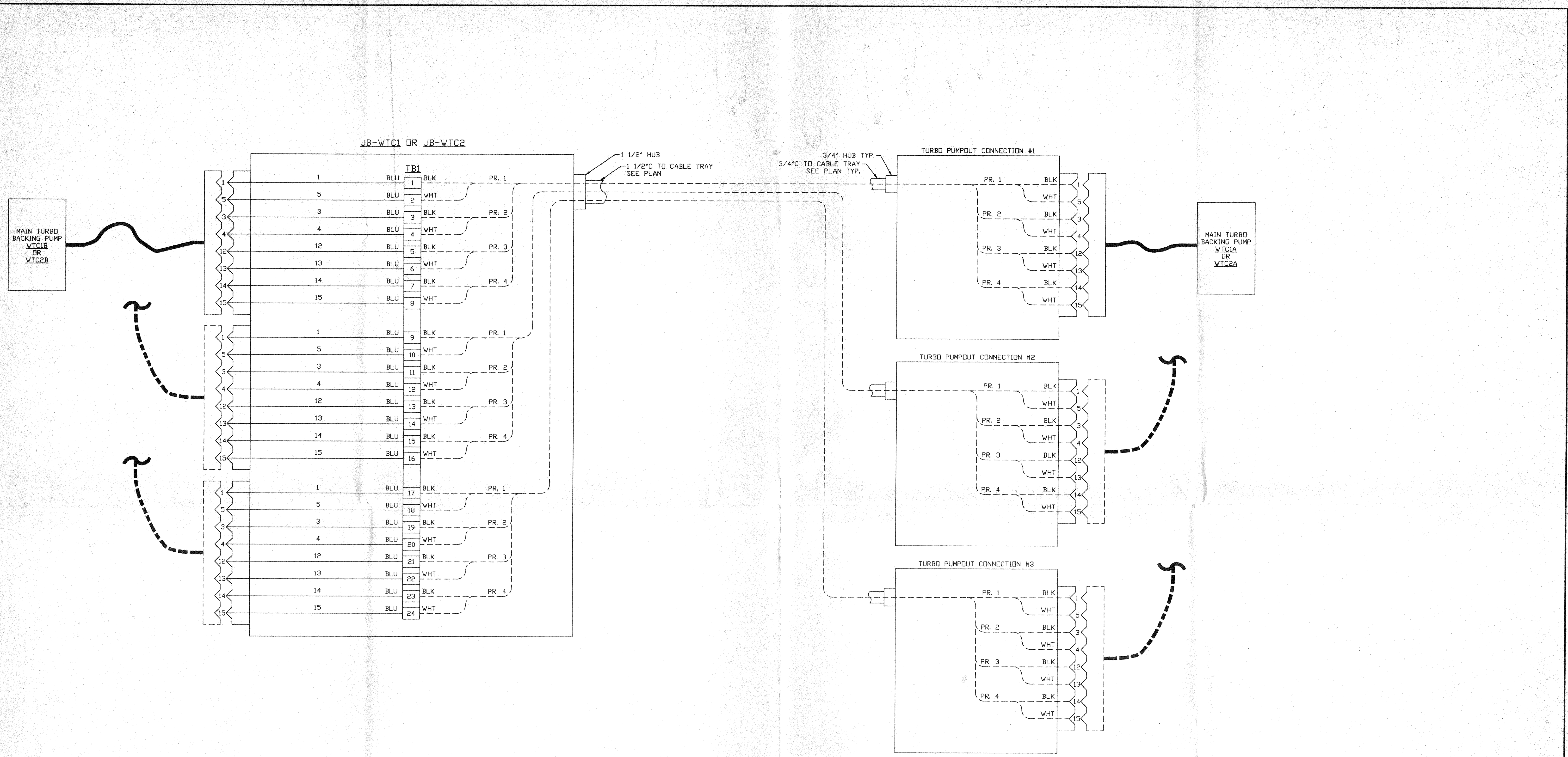
REV	DESCRIPTION	CHKD	DRWN	DATE	DED#
0	ISSUE FOR FDR			04.26.96	0129

PROCESS SYSTEMS INTERNATIONAL INC.
 20 WALKUP DR. WESTBOROUGH, MASSACHUSETTS 01581 USA

VACUUM CARTS INTERFACE PLAN
LIGO VACUUM EQUIPMENT
WASHINGTON SITE
CORNER STATION

CAD FILE: V0493125\3125S1
 SIZE: D
 DWG. NO.: V049-3-125
 REV: 0

SCALE: 1" = 10'-0"
 SHEET: 1 OF 3



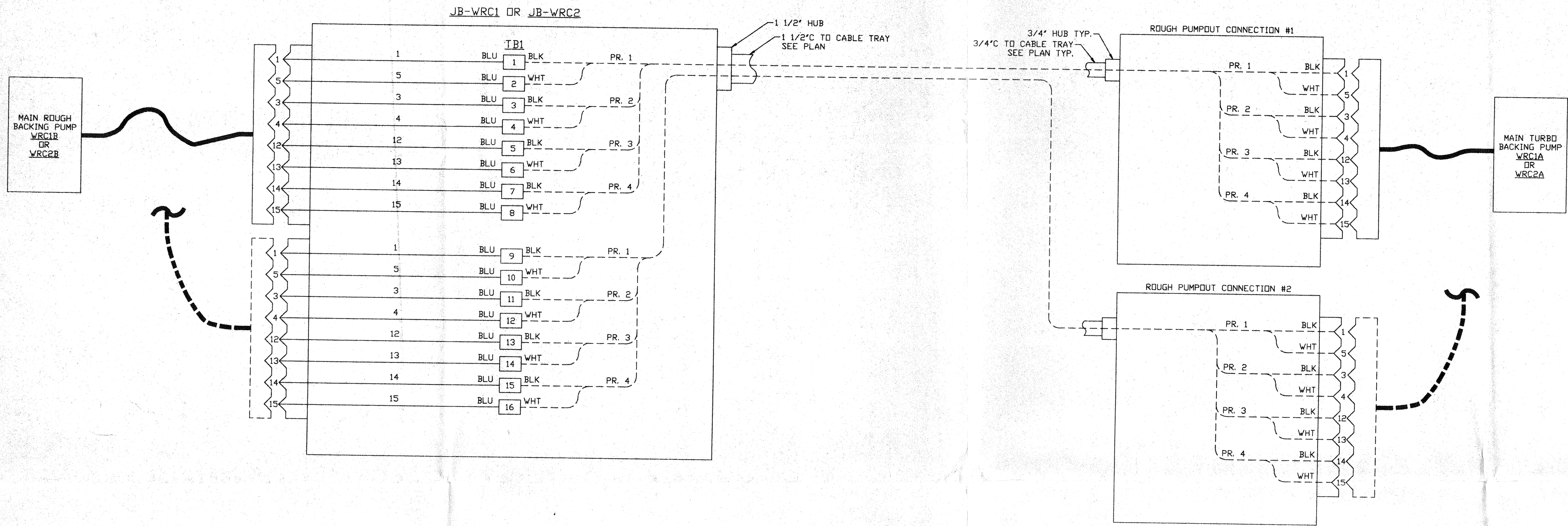
DETAIL 1
 MAIN TURBO CART INTERFACE WIRING DIAGRAM
 NO SCALE

NOT FOR CONSTRUCTION

APR 30 1996

0960569-00-V SEE SHEET 1 FOR REVISIONS

PROCESS SYSTEMS INTERNATIONAL INC. 20 WALKUP DR. WESTBOROUGH, MASSACHUSETTS 01581 USA			
VACUUM CARTS INTERFACE PLAN LIGO VACUUM EQUIPMENT WASHINGTON SITE CORNER STATION			
CAD FILE	SIZE	DWG. NO.	REV.
V0493125\3125S2	D	V049-3-125	0
SCALE	NONE	SHEET	2 OF 3



DETAIL 2
 MAIN ROUGHING CART INTERFACE WIRING DIAGRAM
 NO SCALE

NOT FOR CONSTRUCTION

D960569-00-V SEE SHEET 1 FOR REVISIONS

APR 30 1996

PROCESS SYSTEMS INTERNATIONAL, INC.
 20 WALKUP DR. WESTBOROUGH, MASSACHUSETTS 01581 USA

VACUUM CARTS INTERFACE PLAN
 LIGO VACUUM EQUIPMENT
 WASHINGTON SITE
 CORNER STATION

CAD FILE V0493125\3125S3	SIZE D	DWG. NO. V049-3-125	REV. 0
SCALE NONE	SHEET 3 OF 3		