

- NOTES:**
- 2) PROVIDE PULL TAPE IN EACH CONDUIT.
 - 3) ALL UNDERGROUND INSTALLATION AND DETAILS ARE BY OTHERS.
 - 4) POWER SOURCE SHALL BE AS FOLLOWS:
 - A) BAKEDOUT/CLEAN ROOM 480/277VAC
 - B) ROUGHING CART 480/277VAC
 - C) GATE VALVE 480/277VAC
 - D) GENERAL/ION PUMPS 120VAC
 - E) BAKEDOUT CONTROL 120VAC
 - F) TURBO CART 208/120VAC
 - 5) FOR EQUIPMENT POWER REQUIREMENTS, REFER TO PSI DOCUMENT #V049-1-047.

*DON'T DICTATE CB PANELS
 PANEL LOCATIONS
 & NUMBER ARE AT
 CC'S DISCRETION
 (Subject to embedded
 conduit length & turn
 restrictions)*

*PLUS LABEL DESIGNATIONS FOR
 STUB-UP LOCATIONS*

- LEGEND:**
- VACUUM EQUIPMENT INTERFACE CONDUIT
 - POWER STATION LOCATIONS
 - STUB-UP LOCATIONS

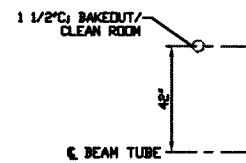
<p>PROPRIETARY AND CONFIDENTIAL</p> <p>THIS DOCUMENT CONTAINS PROPRIETARY INFORMATION BELONGING TO PROCESS SYSTEMS INTERNATIONAL, INC. OR ITS AFFILIATED COMPANIES AND SHALL BE USED ONLY FOR THE PURPOSE FOR WHICH IT WAS SUPPLIED. IT SHALL NOT BE COPIED, REPRODUCED OR OTHERWISE USED, NOR SHALL SUCH INFORMATION BE FURNISHED BY ANY MEANS OR IN ANY MANNER WITHOUT THE WRITTEN CONSENT OF PROCESS SYSTEMS INTERNATIONAL, INC. AND SHALL BE RETURNED UPON REQUEST.</p>				<p>UNLESS OTHERWISE SPECIFIED</p> <p>DIMENSIONS ARE IN INCHES</p> <p>TOLERANCES: FRACTIONAL: ±.005</p> <p>DECIMAL: ±.005</p> <p>ANGLE: ±.005</p> <p>PLATE THICKNESS: ±.005</p> <p>FINISHED SURFACES: ±.005</p> <p>BREAK CONCEPT: ±.005</p> <p>REMOVE ALL BURRS</p>				<p>03.05.96 0082</p> <p>02.29.96 0074</p> <p>02.29.96 0074</p>			
<p>DO NOT SCALE THIS DRAWING</p>				<p>PE REVEISED PRELIMINARY</p> <p>P1 PRELIMINARY</p>				<p>DMV FAB RJW</p> <p>CONC DRWN DATE</p>			
<p>USED ON</p>				<p>REV DESCRIPTION</p>				<p>ISSUE DESCRIPTION</p>			
<p>REFERENCE DRAWINGS</p>				<p>DESCRIPTION</p>				<p>DATE</p>			

PROCESS SYSTEMS INTERNATIONAL INC.
 20 WALTON PK. WESTBOROUGH, MASSACHUSETTS 01581 USA

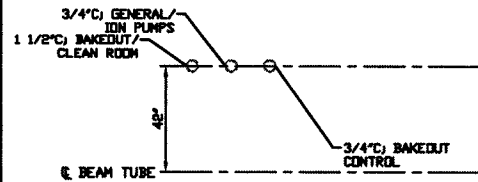
ELECTRICAL CONDUIT STUB-UP PLAN
 LIGO VACUUM EQUIPMENT
 WASHINGTON SITE
 CORNER STATION

DATE FILE: V049-312-431
 SHEET: 1 OF 1
 DATE: V049-3-12-96

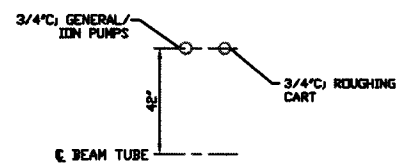
LIGO-D960568-P2-V



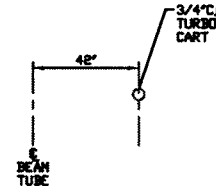
DETAIL 1
NO SCALE



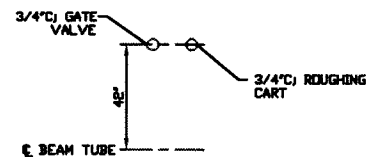
DETAIL 2
NO SCALE



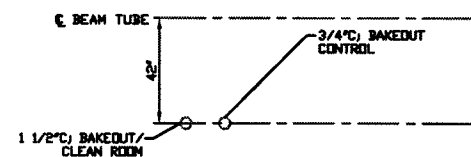
DETAIL 3
NO SCALE



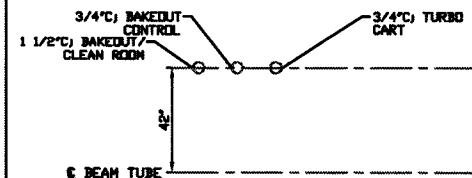
DETAIL 4
NO SCALE



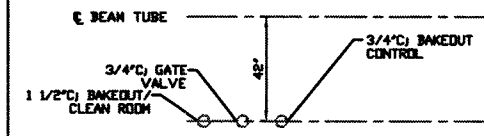
DETAIL 6
NO SCALE



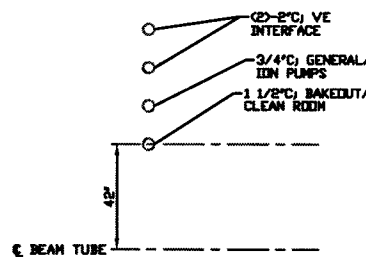
DETAIL 7
NO SCALE



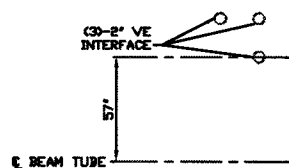
DETAIL 9
NO SCALE



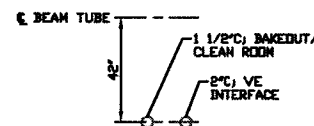
DETAIL 10
NO SCALE



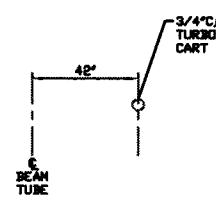
DETAIL 11
NO SCALE



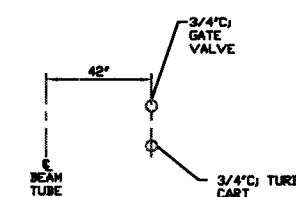
DETAIL 12
NO SCALE



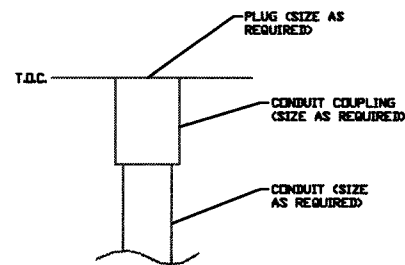
DETAIL 13
NO SCALE



DETAIL 14
NO SCALE



DETAIL 15
NO SCALE



DETAIL 16
NO SCALE
TYP. FOR ALL STUB-UPS

SEE SHEET 1 FOR REVISIONS

PROCESS SYSTEMS INTERNATIONAL, INC.
20 WALTON DA. NES/BOROUGH, MASSACHUSETTS 01961 USA

ELECTRICAL CONDUIT STUB UP PLAN
LIGO VACUUM EQUIPMENT
WASHINGTON SITE
CORNER STATION

OUR FILE V0493124/3:243?	REV. NO. D	REV. NO. V049-3-124	REV. P2
SCALE NCP-1	SHEET 2	OF 2	