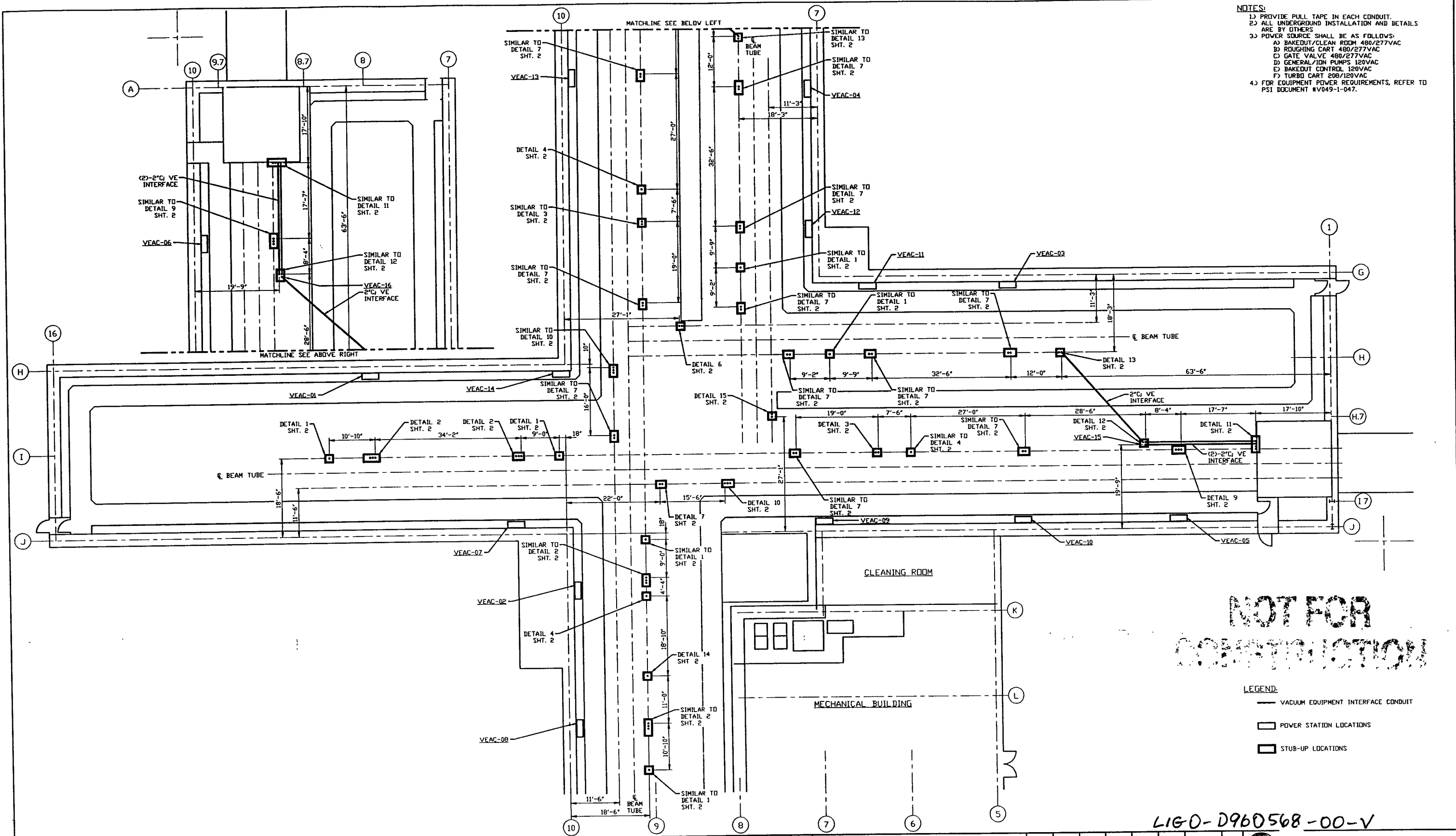


- NOTES:**
- 1) PROVIDE PULL TAPE IN EACH CONDUIT.
 - 2) ALL UNDERGROUND INSTALLATION AND DETAILS ARE BY OTHERS.
 - 3) POWER SOURCE SHALL BE AS FOLLOWS:
 - A) BAKEDOUT/CLEAN ROOM 480/277VAC
 - B) ROUGHING CART 480/277VAC
 - C) GATE VALVE 480/277VAC
 - D) GENERAL/IDN PUMPS 120VAC
 - E) BAKEDOUT CONTROL 120VAC
 - F) TURBO CART 208/120VAC
 - 4) FOR EQUIPMENT POWER REQUIREMENTS, REFER TO PSI DOCUMENT #V049-1-047.



NOT FOR CONSTRUCTION

- LEGEND:**
- VACUUM EQUIPMENT INTERFACE CONDUIT
 - POWER STATION LOCATIONS
 - STUB-UP LOCATIONS

LIG0-D960568-00-V

PROPRIETARY AND CONFIDENTIAL

THIS DOCUMENT CONTAINS PROPRIETARY INFORMATION BELONGING TO PROCESS SYSTEMS INTERNATIONAL, INC. OR ITS AFFILIATED COMPANIES AND SHALL BE USED ONLY FOR THE PURPOSE FOR WHICH IT WAS SUPPLIED. IT SHALL NOT BE COPIED, REPRODUCED OR OTHERWISE USED, NOR SHALL SUCH INFORMATION BE FURNISHED IN WHOLE OR IN PART TO OTHERS EXCEPT IN ACCORDANCE WITH THE TERMS OF ANY AGREEMENT UNDER WHICH IT WAS SUPPLIED OR WITH THE PRIOR WRITTEN CONSENT OF PROCESS SYSTEMS INTERNATIONAL, INC. AND SHALL BE RETURNED UPON REQUEST.

DWG. NO.	DESCRIPTION	REFERENCE DRAWINGS	DWG. NO.	DESCRIPTION

UNLESS OTHERWISE SPECIFIED

DIMENSIONS ARE IN INCHES

TELEVISIONS: FUNCTIONAL & ANGULAR RADIUS AS SHOWN OR TWO PLACE DECIMAL, & IN THREE PLACE DECIMAL, & ANG FURNISHED SURFACE FINISH BREAK CORNERS OR BUTT REMOVE ALL BURRS

DO NOT SCALE THIS DRAWING

USED ON: REV: DESCRIPTION: ISSUE DESCRIPTION:

NEXT ASS'Y: 4 3 2 1

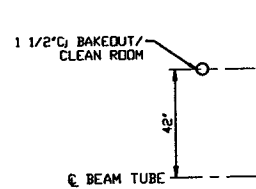
REV	DESCRIPTION	CHKD	DRWN	DATE	DED
0	ISSUE FOR FDR			04.26.96	0129

PROCESS SYSTEMS INTERNATIONAL, INC.
20 WALKUP DR. WESTBOROUGH, MASSACHUSETTS 01581 USA

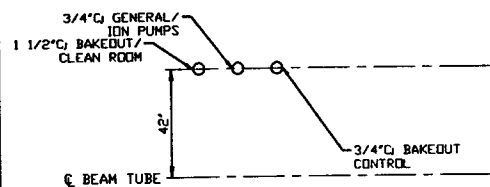
ELECTRICAL CONDUIT STUB-UP PLAN
LIG0 VACUUM EQUIPMENT
WASHINGTON SITE
CORNER STATION

GAB FILE: V0493124\3124S1 SIZE: D DWG. NO.: V049-3-124 REV: 0

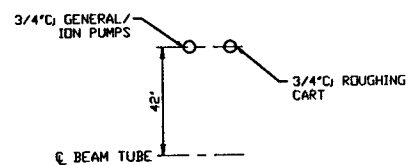
SCALE: 1" = 10'-0" SHEET: 1 OF 2



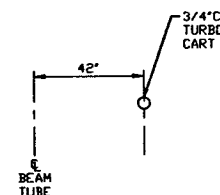
DETAIL 1
NO SCALE



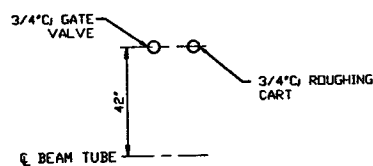
DETAIL 2
NO SCALE



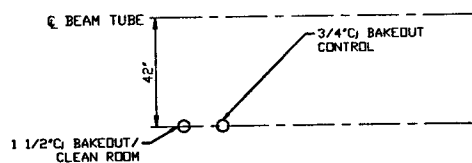
DETAIL 3
NO SCALE



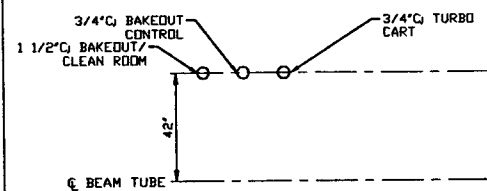
DETAIL 4
NO SCALE



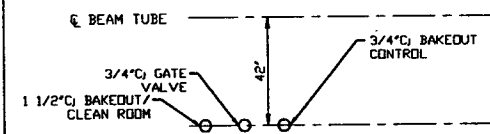
DETAIL 6
NO SCALE



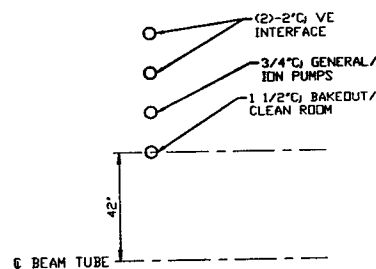
DETAIL 7
NO SCALE



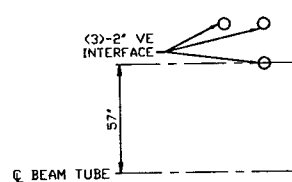
DETAIL 9
NO SCALE



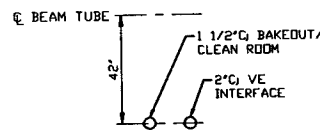
DETAIL 10
NO SCALE



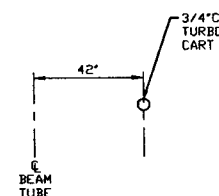
DETAIL 11
NO SCALE



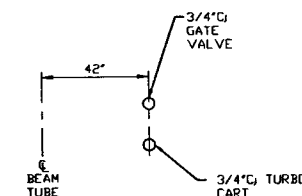
DETAIL 12
NO SCALE



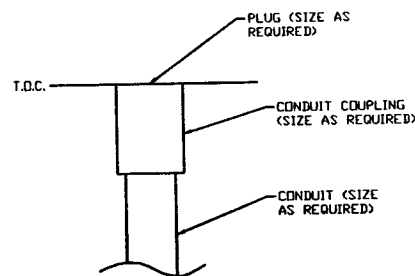
DETAIL 13
NO SCALE



DETAIL 14
NO SCALE



DETAIL 15
NO SCALE



DETAIL 16
NO SCALE
TYP. FOR ALL STUB-UPS

NOT FOR CONSTRUCTION

SEE SHEET 1 FOR REVISIONS

PROCESS SYSTEMS INTERNATIONAL, INC. 20 WALMAP DR. WESTBOROUGH, MASSACHUSETTS 01581 USA			
ELECTRICAL CONDUIT STUB-UP PLAN LIGO VACUUM EQUIPMENT WASHINGTON SITE CORNER STATION			
CAD FILE	SIZE	PKG. NO.	REV.
V0493124/3124S2	D	V049-3-124	0
SCALE	NONE	SHEET	2 OF 2

LIGO-D960568-00-V