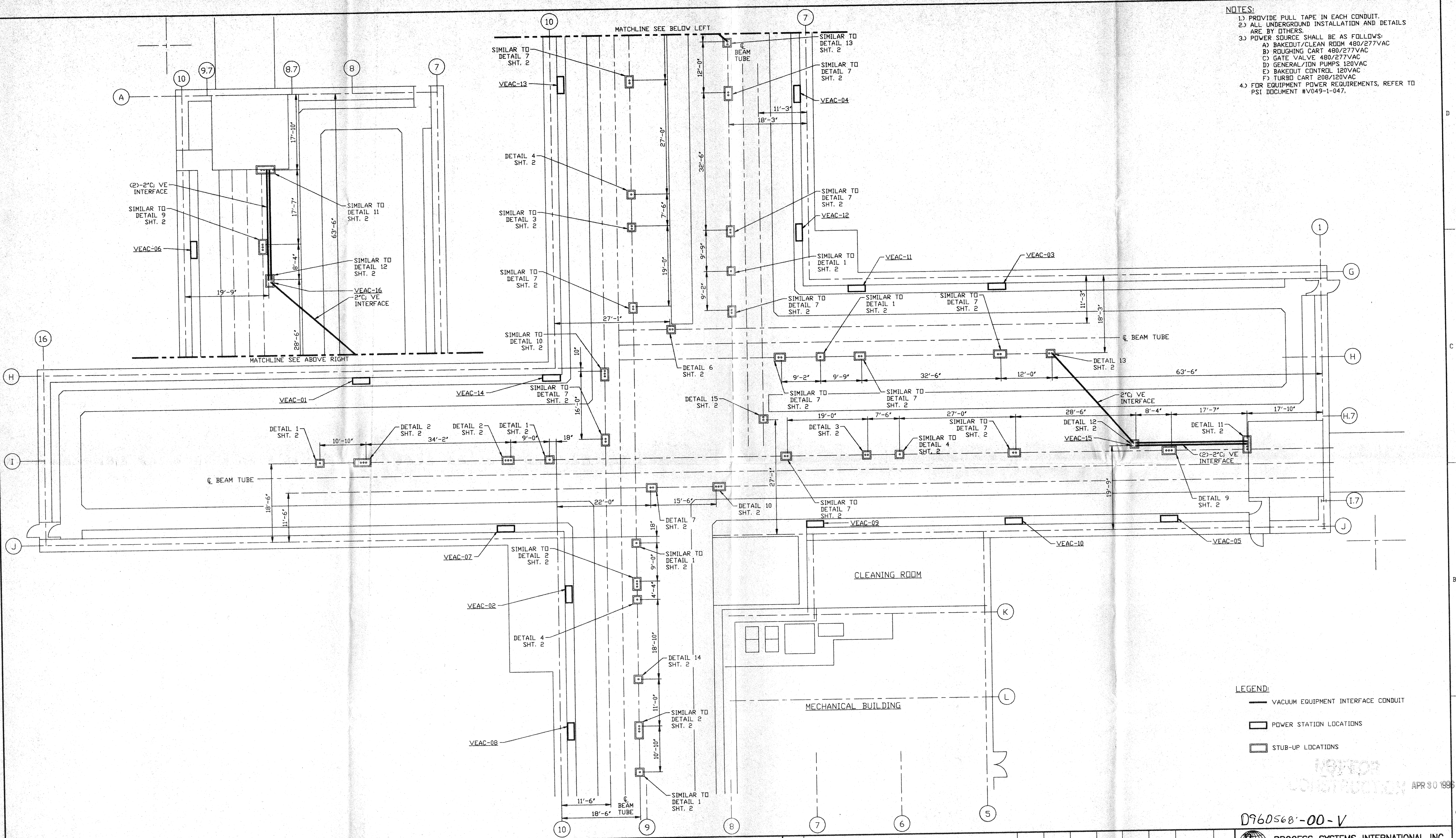


- NOTES:**
- 1) PROVIDE PULL TAPE IN EACH CONDUIT.
 - 2) ALL UNDERGROUND INSTALLATION AND DETAILS ARE BY OTHERS.
 - 3) POWER SOURCE SHALL BE AS FOLLOWS:
 - A) BAKEOUT/CLEAN ROOM 480/277VAC
 - B) ROUGHING CART 480/277VAC
 - C) GATE VALVE 480/277VAC
 - D) GENERAL/ION PUMPS 120VAC
 - E) BAKEOUT CONTROL 120VAC
 - F) TURBO CART 208/120VAC
 - 4) FOR EQUIPMENT POWER REQUIREMENTS, REFER TO PST DOCUMENT #V049-1-047.



- LEGEND:**
- VACUUM EQUIPMENT INTERFACE CONDUIT
 - POWER STATION LOCATIONS
 - STUB-UP LOCATIONS

D960568-00-V

PROCESS SYSTEMS INTERNATIONAL INC.
20 WALKUP DR. WESTBOROUGH, MASSACHUSETTS 01581 USA

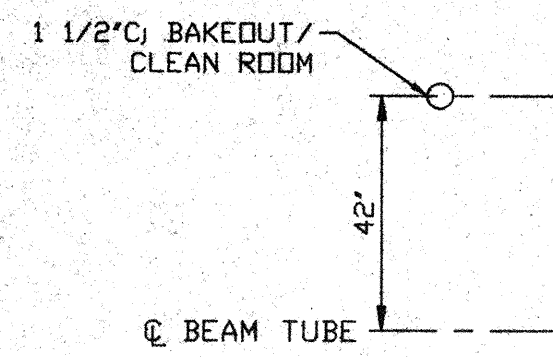
ELECTRICAL CONDUIT STUB-UP PLAN
LIGO VACUUM EQUIPMENT
WASHINGTON SITE
CORNER STATION

CAD FILE: V0493124\3124S1
SIZE: D
DWG NO: V049-3-124
REV: 0

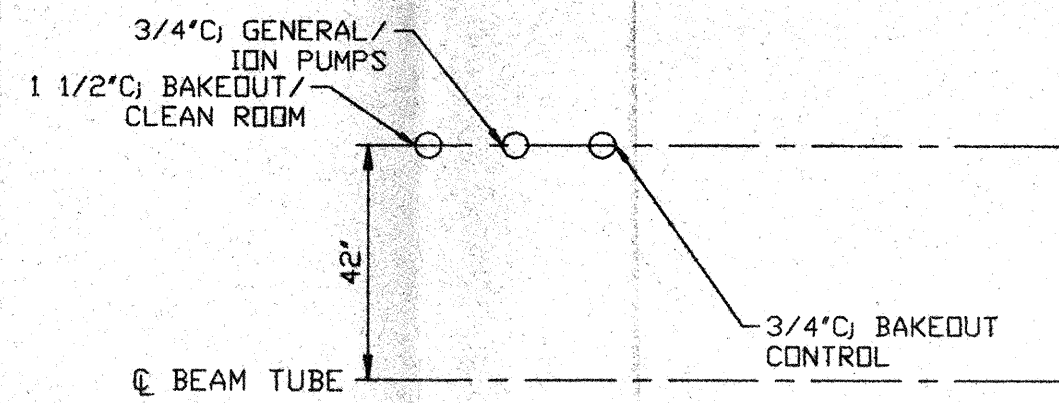
SCALE: 1" = 10'-0"

SHEET: 1 OF 2

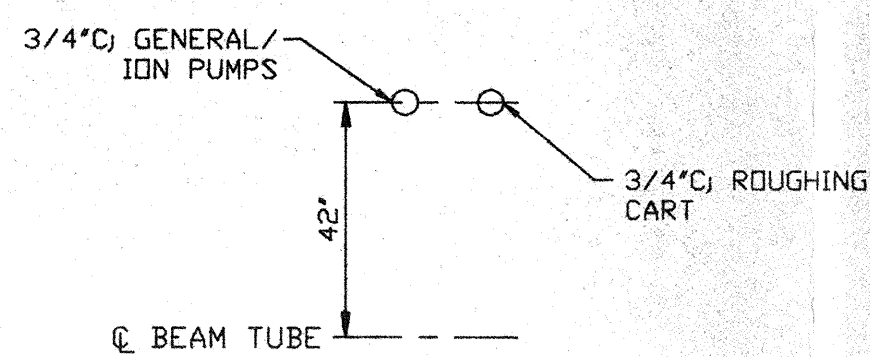
| | | | | | | | |
|---|-------------|----------|-------------|---|-------------|----------|-------------|
| PROPRIETARY AND CONFIDENTIAL | | | | UNLESS OTHERWISE SPECIFIED DIMENSIONS ARE IN INCHES | | | |
| THIS DOCUMENT CONTAINS PROPRIETARY INFORMATION BELONGING TO PROCESS SYSTEMS INTERNATIONAL, INC. OR ITS AFFILIATED COMPANIES AND SHALL BE USED ONLY FOR THE PURPOSE FOR WHICH IT WAS SUPPLIED. IT SHALL NOT BE COPIED, REPRODUCED OR OTHERWISE USED, NOR SHALL SUCH INFORMATION BE FURNISHED IN WHOLE OR IN PART TO OTHERS EXCEPT IN ACCORDANCE WITH THE TERMS OF ANY AGREEMENT UNDER WHICH IT WAS SUPPLIED OR WITH THE PRIOR WRITTEN CONSENT OF PROCESS SYSTEMS INTERNATIONAL, INC. AND SHALL BE RETURNED UPON REQUEST. | | | | TOLERANCES: FRACTIONAL ± ANGULAR/MACH ±0°-30' BEND ±2° TWO PLACE DECIMAL ±.01 THREE PLACE DECIMAL ±.005 FINISHED SURFACE RMS BREAK CORNERS IN OUT REMOVE ALL BURRS | | | |
| DO NOT SCALE THIS DRAWING | | | | 0 ISSUE FOR FDR | | | |
| USED ON: | | | | REV DESCRIPTION | | | |
| NEXT ASS'Y: | | | | ISSUE DESCRIPTION | | | |
| DWG. NO. | DESCRIPTION | DWG. NO. | DESCRIPTION | DWG. NO. | DESCRIPTION | DWG. NO. | DESCRIPTION |
| 8 | 7 | 6 | 5 | 4 | 3 | 2 | 1 |



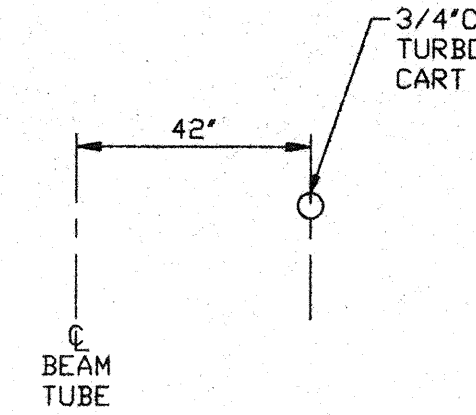
DETAIL 1
NO SCALE



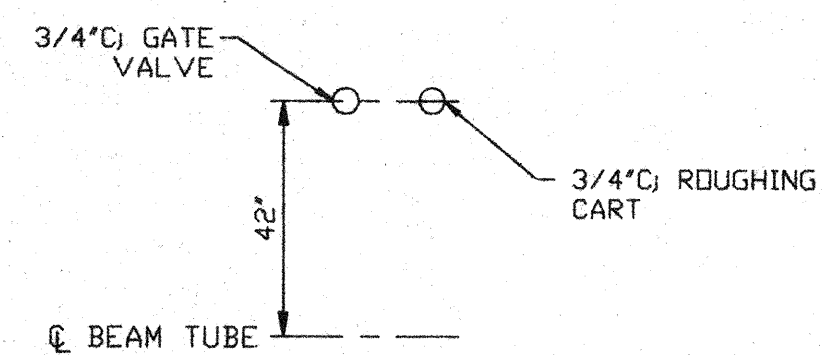
DETAIL 2
NO SCALE



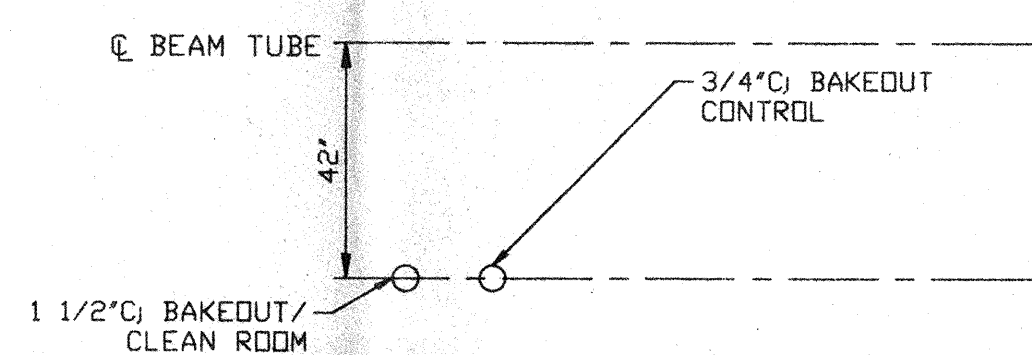
DETAIL 3
NO SCALE



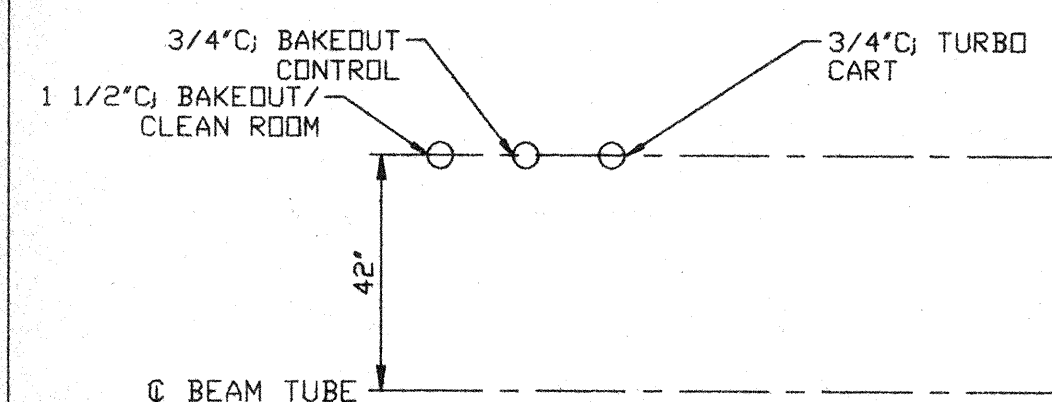
DETAIL 4
NO SCALE



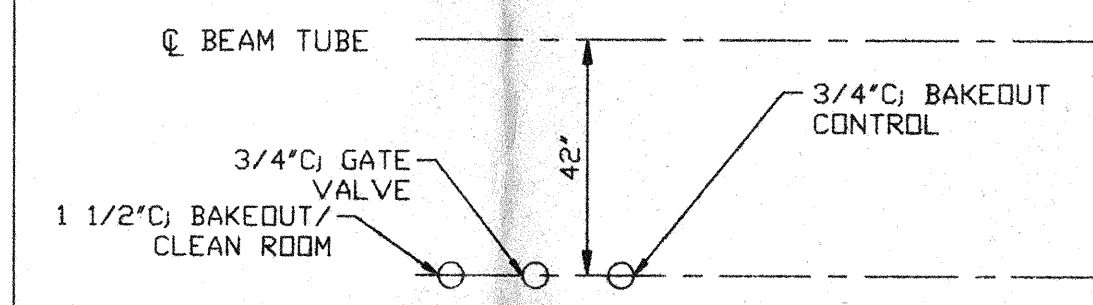
DETAIL 6
NO SCALE



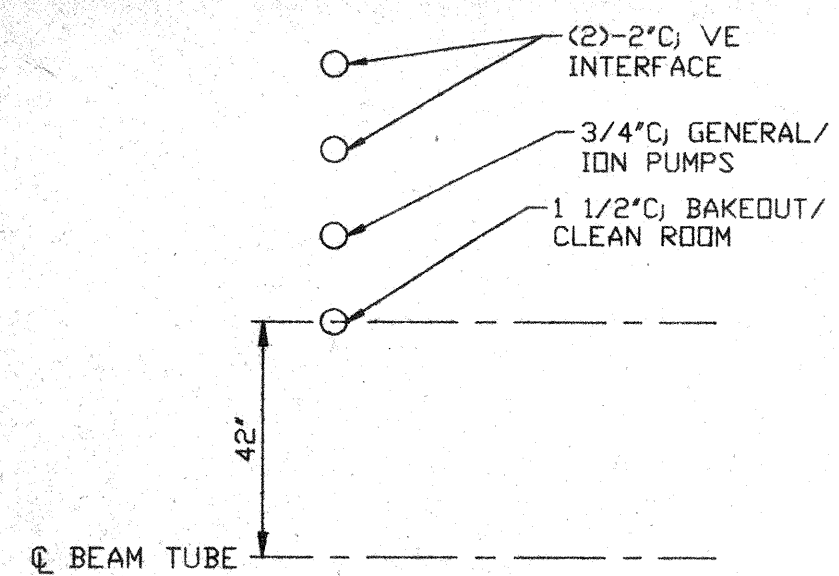
DETAIL 7
NO SCALE



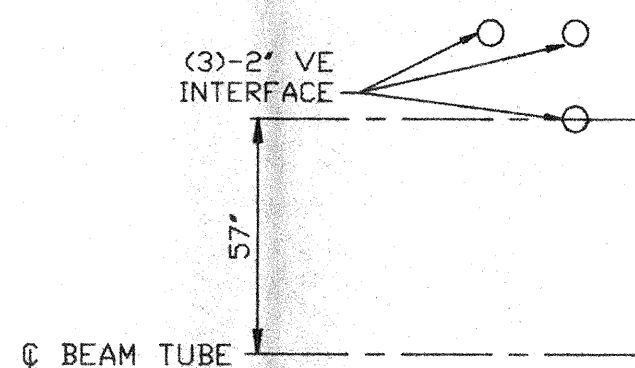
DETAIL 9
NO SCALE



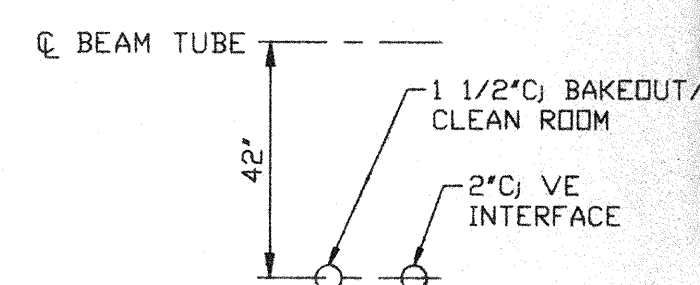
DETAIL 10
NO SCALE



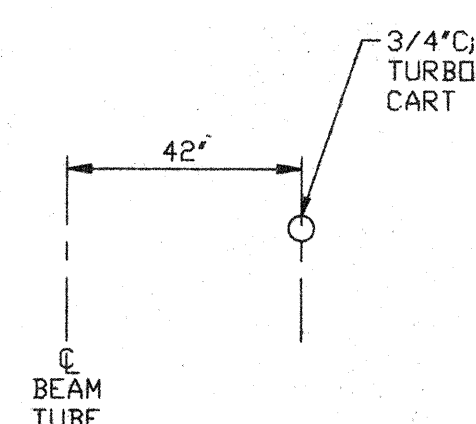
DETAIL 11
NO SCALE



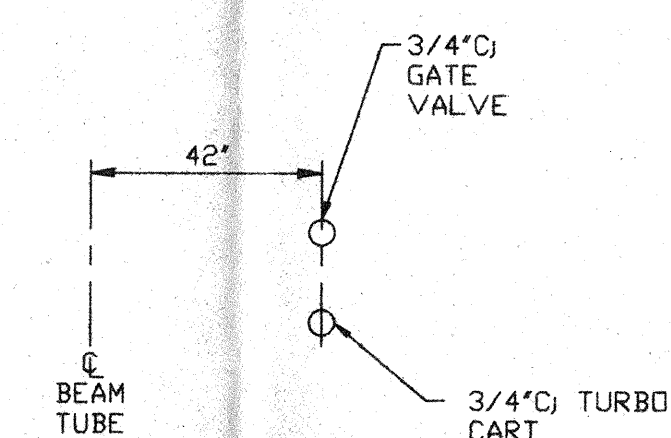
DETAIL 12
NO SCALE



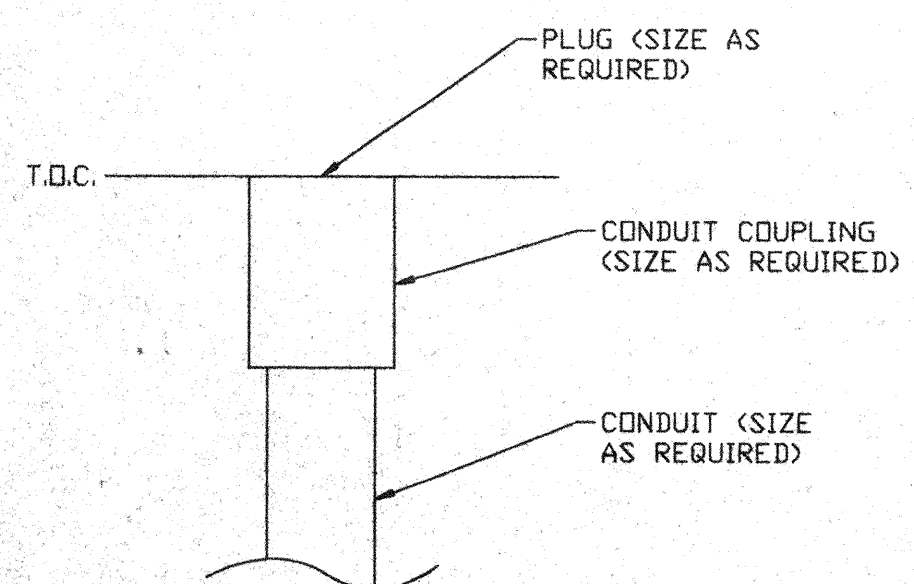
DETAIL 13
NO SCALE



DETAIL 14
NO SCALE



DETAIL 15
NO SCALE



DETAIL 16
NO SCALE
TYP. FOR ALL STUB-UPS

NOT FOR CONSTRUCTION

APR 30 1995

0960568-00-V SEE SHEET 1 FOR REVISIONS

PROCESS SYSTEMS INTERNATIONAL INC.
20 WALKUP DR. WESTBOROUGH, MASSACHUSETTS 01581 USA

ELECTRICAL CONDUIT STUB-UP PLAN
LIGO VACUUM EQUIPMENT
WASHINGTON SITE
CORNER STATION

| | | | |
|-----------------------------|-----------------|------------------------|-----------|
| CAD FILE V0493124/3124S2 | SIZE D | DWG. NO. V049-3-124 | REV. 0 |
| SCALE NONE | SHEET 2 OF 2 | | |