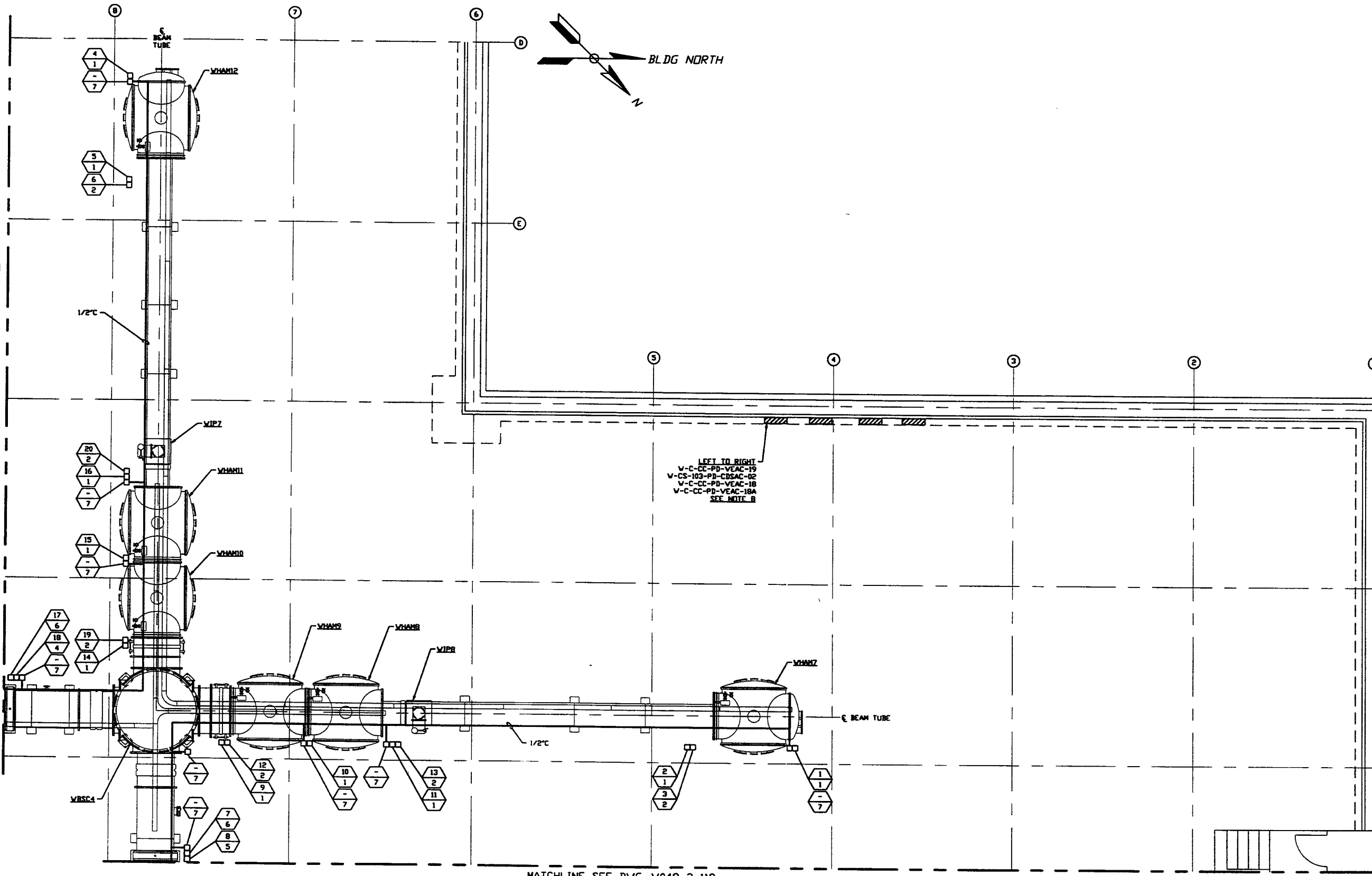
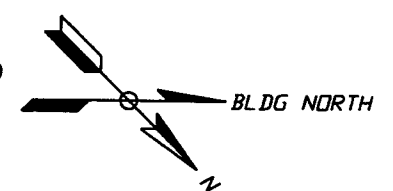


MATCHLINE SEE DWG. V049-3-117



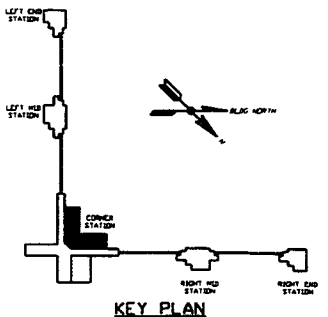
MATCHLINE SEE DWG. V049-3-118

DIAGONAL SECTION PLAN @ EL. 100'-0"



- NOTES:**
- 1) FOR ELECTRICAL INSTALLATION DETAILS SEE PSI DWG. V049-3-006.
 - 2) CONDUIT IS SHOWN DIAGRAMMATICALLY AND SHALL BE FIELD VERIFIED SO AS TO OPTIMIZE SUPPORTING MEANS AND TO AVOID INTERFERENCES WITH PIPING SYSTEMS.
 - 3) ALL RECEPTACLES SHALL BE IDENTIFIED WITH PANEL AND CKT. NUMBER.
 - 4) EACH 3Ø CIRCUIT SHALL HAVE DEDICATED NEUTRAL AND GROUND.
 - 5) FOR GENERAL NOTES & LEGEND SEE PSI DWG. #V049-3-001 SHT. 1.
 - 6) FOR LIST OF CIVIL CONTRACTOR REFERENCE DWGS. WITH CURRENT REVISIONS SEE PSI DWG. #V049-3-001 SHT. 2.
 - 7) FOR DISTRIBUTION SYSTEM FEEDER SCHEDULE SEE PSI DWG. #V049-3-120.
 - 8) POWER DISTRIBUTION PANELS ARE FURNISHED BY OTHERS.
 - 9) ALL CONDUIT SHALL BE EMT UNLESS OTHERWISE NOTED.

LEFT TO RIGHT
V-C-CC-PD-VEAC-19
V-CS-103-PD-CDSAC-02
V-C-CC-PD-VEAC-18
V-C-CC-PD-VEAC-18A
SEE NOTE B



| DWG. NO. | DESCRIPTION | DWG. NO. | DESCRIPTION |
|------------|--|----------|--|
| V049-3-118 | POWER PLAN WASHINGTON RIGHT BEAM MANIFOLD | | |
| V049-3-117 | POWER PLAN WASHINGTON LEFT BEAM MANIFOLD | | |
| V049-3-006 | ELECTRICAL INSTALLATION DETAILS | VA-E-121 | CORNER STATION LVEA CDSAC PANEL SCHED. (PARSONS) |
| V049-3-005 | ION PUMP CONTROLLER CABINET WIRING DIAGRAM | VA-E-120 | CORNER STATION LVEA VEAC PANEL SCHED. (PARSONS) |
| V049-3-002 | WASHINGTON OVERALL SITE PLAN | VA-E-119 | CORNER STATION LVEA VEAC PANEL SCHED. (PARSONS) |
| V049-3-001 | GENERAL NOTES & LEGEND | VA-E-118 | CORNER STATION LVEA VEAC PANEL SCHED. (PARSONS) |

UNLESS OTHERWISE SPECIFIED DIMENSIONS ARE IN INCHES
 TOLERANCES:
 FRACTIONAL:
 ANGULAR: ± 30" 30" 30" 30"
 TWO PLACE DECIMAL: ± .01
 THREE PLACE DECIMAL: ± .005
 FINISHED SURFACE: RING
 BREAK CORNERS: 3R OUT
 REMOVE ALL BURRS

DO NOT SCALE THIS DRAWING

USED ON: _____
 NEXT ASS'Y: _____

| REV | DESCRIPTION | CHKD | DRWN | DATE | DECD |
|-----|----------------------------|------|------|----------|------|
| 2 | ISSUE FOR CONSTRUCTION | | | 05.12.97 | 0480 |
| 1 | ISSUE FOR FDR UPDATE & BID | | | 11.25.96 | 0355 |
| 0 | ISSUE FOR FDR | | | 04.26.96 | 0129 |

PROCESS SYSTEMS INTERNATIONAL, INC.
 20 WALCUP DR. WESTBOROUGH, MASSACHUSETTS 01581 USA

**POWER PLAN
 LIGO VACUUM EQUIPMENT
 WASHINGTON SITE
 DIAGONAL SECTION**

CAR FILE: V0493119
 SIZE: D
 DWG. NO.: V049-3-119
 SHEET: 1 OF 1

LIGO-D960564-02-V