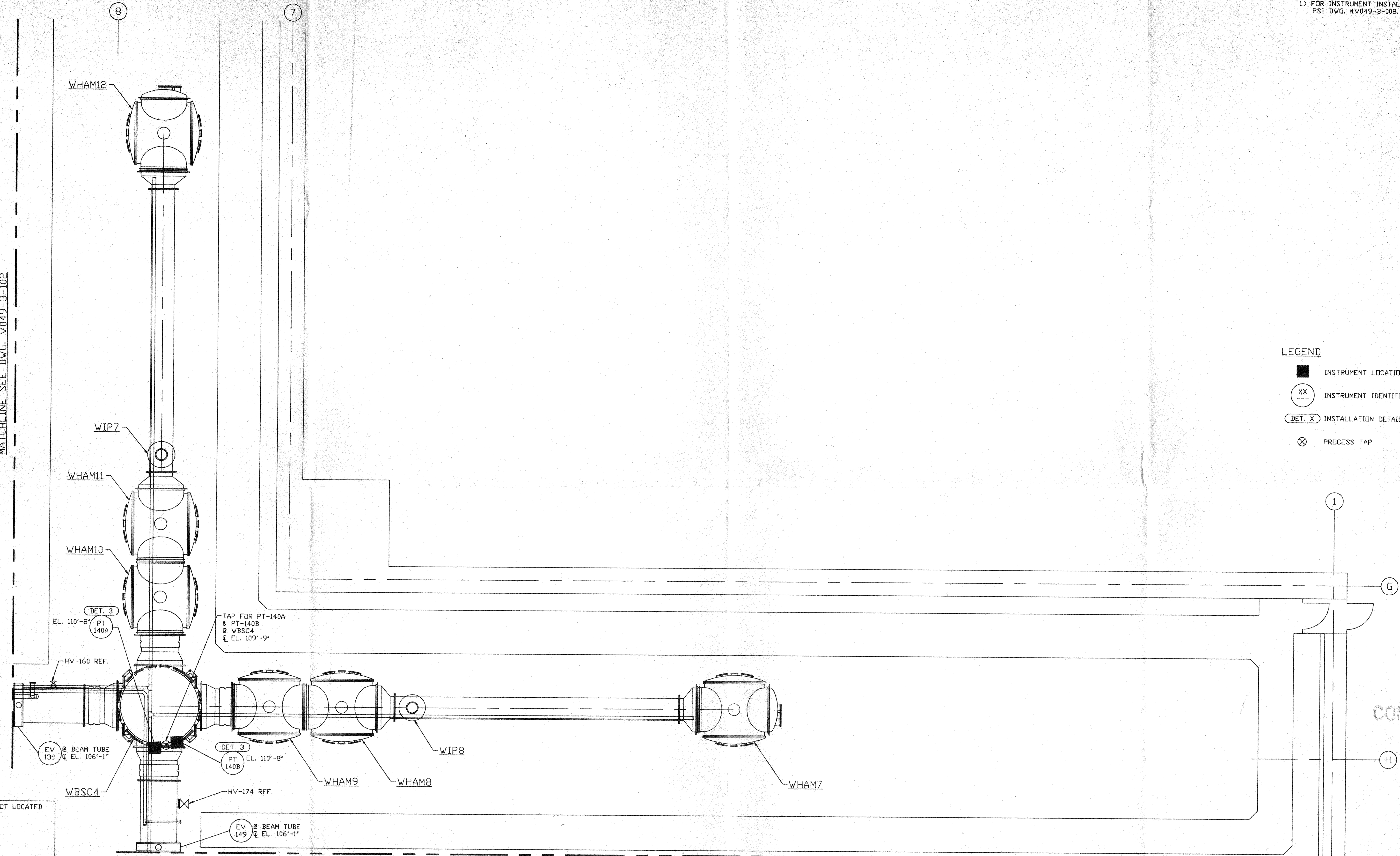


NOTES:

1.) FOR INSTRUMENT INSTALLATION DETAILS SEE
PSI DWG. HV049-3-008.

MATCHLINE SEE DWG. V049-3-102



LEGEND

- INSTRUMENT LOCATION
- ⊗ XX INSTRUMENT IDENTIFICATION
- ⊗ DET. X INSTALLATION DETAIL SEE NOTE 1
- ⊗ PROCESS TAP

NOT FOR
CONSTRUCTION

MATCHLINE SEE DWG. V049-3-103

D960552-00-V

INSTRUMENTS NOT LOCATED

PCV
140

PROPRIETARY AND CONFIDENTIAL
THIS DOCUMENT CONTAINS PROPRIETARY INFORMATION BELONGING TO PROCESS SYSTEMS INTERNATIONAL, INC. OR ITS AFFILIATED COMPANIES AND SHALL BE USED ONLY FOR THE PURPOSE FOR WHICH IT WAS SUPPLIED. IT SHALL NOT BE COPIED, REPRODUCED OR OTHERWISE USED, NOR SHALL SUCH INFORMATION BE FURNISHED IN WHOLE OR IN PART TO OTHERS EXCEPT IN ACCORDANCE WITH THE TERMS OF ANY AGREEMENT UNDER WHICH IT WAS SUPPLIED OR WITH THE PRIOR WRITTEN CONSENT OF PROCESS SYSTEMS INTERNATIONAL, INC. AND SHALL BE RETURNED UPON REQUEST.

V049-3-103	INSTRUMENT PLAN RIGHT BEAM MANIFOLD		
V049-3-102	INSTRUMENT PLAN LEFT BEAM MANIFOLD		
V049-3-008	INSTRUMENT INSTALLATION DETAILS		
V049-3-002	WASHINGTON OVERALL SITE PLAN		
V049-3-001	GENERAL NOTES & LEGEND		
V049-0-014	P & I D WASHINGTON DIAGONAL SECTION	V049-5-001	EQUIP. ARRANGEMENT WASHINGTON CORNER STATION
DWG. NO.	DESCRIPTION	DWG. NO.	DESCRIPTION

UNLESS OTHERWISE SPECIFIED DIMENSIONS ARE IN INCHES TOLERANCES: FRACTIONAL ± ANGULAR APPROX 30°-30' BEND #2" TWO PLACE DECIMAL ± .01 THREE PLACE DECIMAL ± .005 FINISHED SURFACE RMS BREAK CORNERS IN OUT REMOVE ALL BURRS																				
DO NOT SCALE THIS DRAWING	0	ISSUE FOR FDR																		
USED ON:	REV	DESCRIPTION																		
NEXT ASS'Y:		ISSUE DESCRIPTION																		

PROCESS SYSTEMS INTERNATIONAL INC.
20 WALKUP DR. WESTBOROUGH, MASSACHUSETTS 01581 USA

**INSTRUMENT PLAN
LIGO VACUUM EQUIPMENT
WASHINGTON SITE
DIAGONAL SECTION**

CAD FILE: V0493104
SIZE: D
DWG. NO.: V049-3-104
REV: 0
SCALE: 3/16" = 1' - 0"
SHEET: 1 OF 1