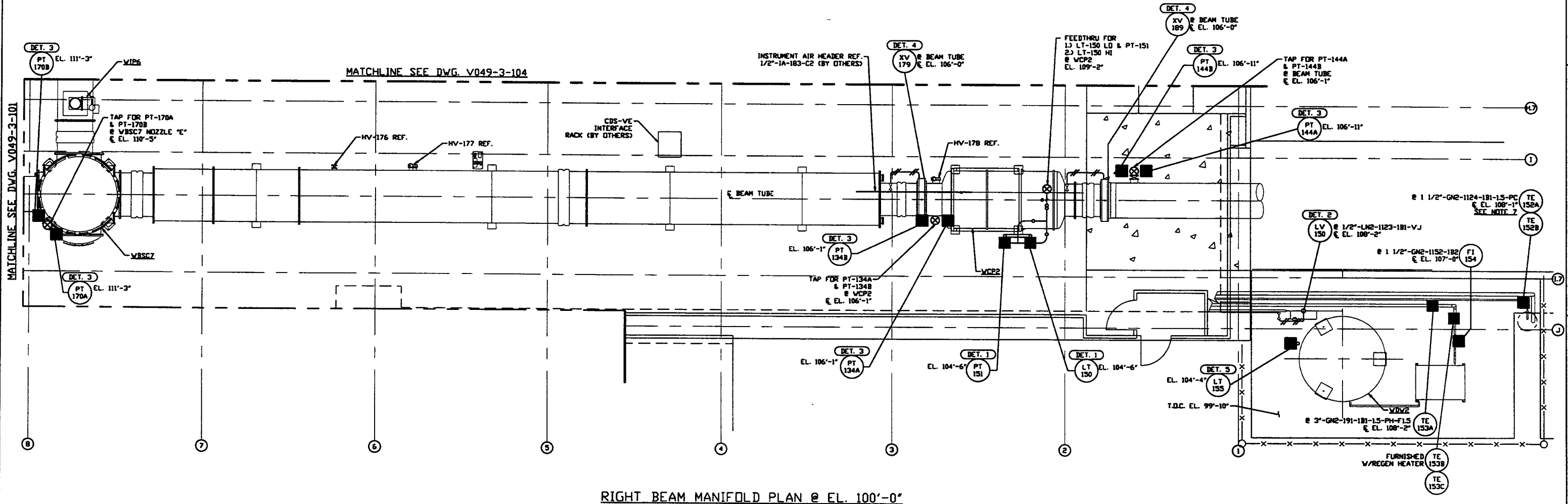
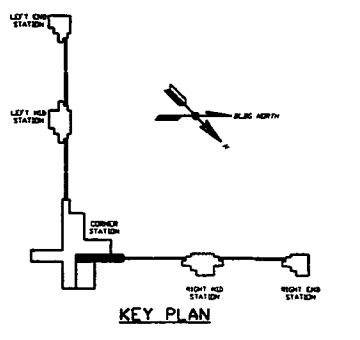


NOTES:

- 1) FOR GENERAL NOTES & LEGEND SEE PSI DWG. #V049-3-001 SHT. 1.
- 2) FOR LIST OF CIVIL CONTRACTOR REFERENCE DWGS. WITH CURRENT REVISIONS SEE PSI DWG. #V049-3-001 SHT. 2.
- 3) FOR INSTRUMENT INSTALLATION DETAILS SEE PSI DWG. #V049-3-008.
- 4) ALL PROCESS TUBING SHALL 3/8" O.D. x .035 THK SEAMLESS SSTL TYPE 304.
- 5) TUBING ROUTING SHOWN ON PLAN IS DIAGRAMMATICAL AND SHALL BE FIELD VERIFIED SO AS TO OPTIMIZE SUPPORTING MEANS AND TO AVOID INTERFERENCES WITH CONDUIT & PIPING SYSTEMS.
- 6) ALL INSTRUMENT AIR TUBING SHALL BE 1/4" TYPE L OR LARGER, COPPER, WITH BRASS COMPRESSION CONNECTORS.
- 7) DUAL THERMOCOUPLE TE-152A/B SHALL BE LOCATED WITHIN 6 INCHES OF THE CHECK VALVE HEAT TAPE.



RIGHT BEAM MANIFOLD PLAN @ EL. 100'-0"



DWG. NO.	DESCRIPTION	DWG. NO.	DESCRIPTION
V049-3-101	INSTRUMENT PLAN WASHINGTON VERTEX SECTION		
V049-3-008	INSTRUMENT INSTALLATION DETAILS		
V049-3-002	WASHINGTON OVERALL SITE PLAN		
V049-3-001	GENERAL NOTES & LEGEND	V049-3-012	PIPING PLAN WASHINGTON CORNER STATION
V049-0-006	P & I D BOX CRYOPUMP	V049-3-001	EQUIP. ARRANGEMENT WASHINGTON CORNER STATION
V049-0-015	P & I D WASHINGTON RIGHT BEAM MANIFOLD	V049-3-104	INSTRUMENT PLAN WASHINGTON DIAGONAL SECTION

REV	DESCRIPTION	CHKD	DRWN	DATE	DECN
2	ISSUE FOR CONSTRUCTION	REB	DmCw	05.12.97	0480
1	ISSUE FOR FOR UPDATE & BID		RJV	11.25.96	0355
0	ISSUE FOR FOR		FAB	04.26.96	0129

PROCESS SYSTEMS INTERNATIONAL INC.
30 WALKUP DR. WESTBOROUGH, MASSACHUSETTS 01581 USA

INSTRUMENT PLAN
LIGO VACUUM EQUIPMENT
WASHINGTON SITE
RIGHT BEAM MANIFOLD

CAD FILE: V0493103
SCALE: 3/16" = 1' - 0"
SHEET: 1 OF 1