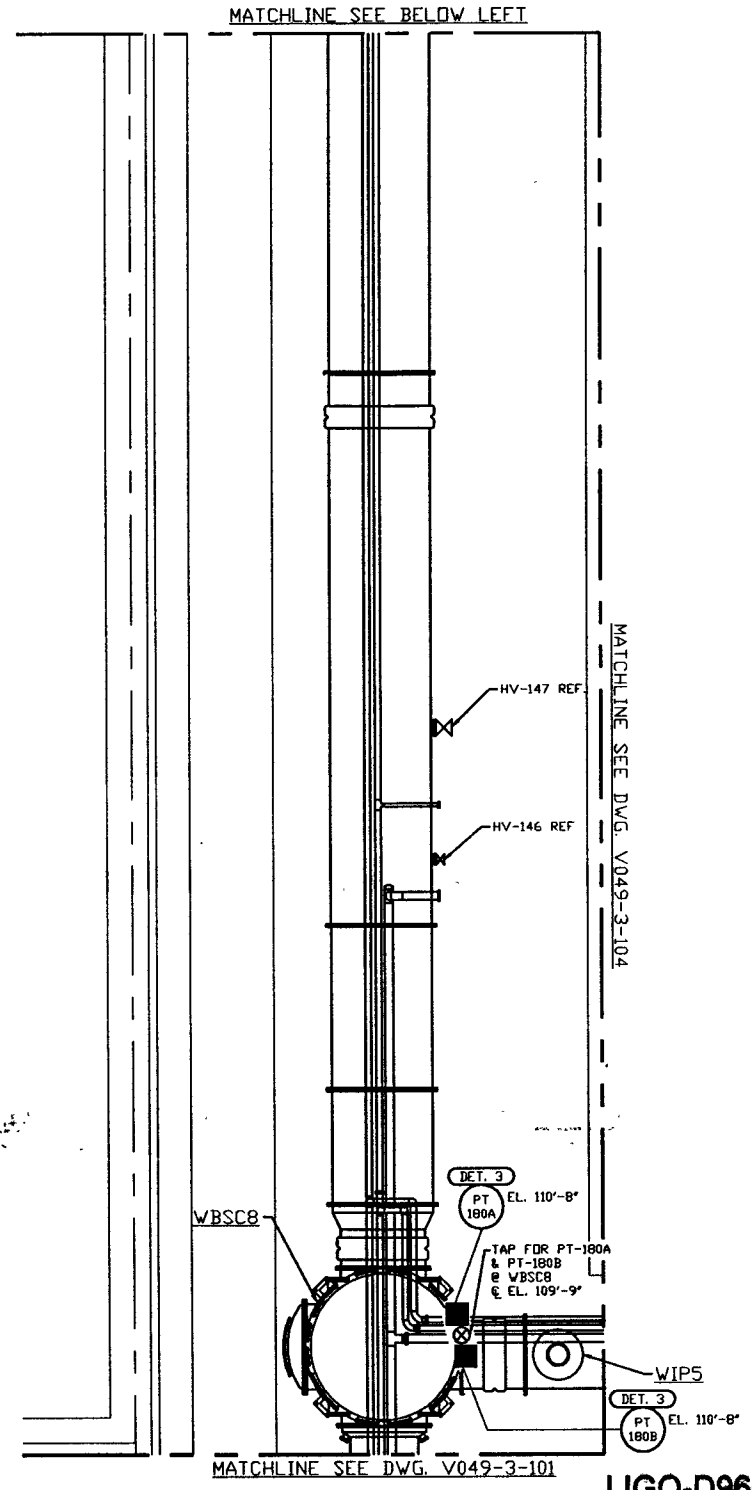
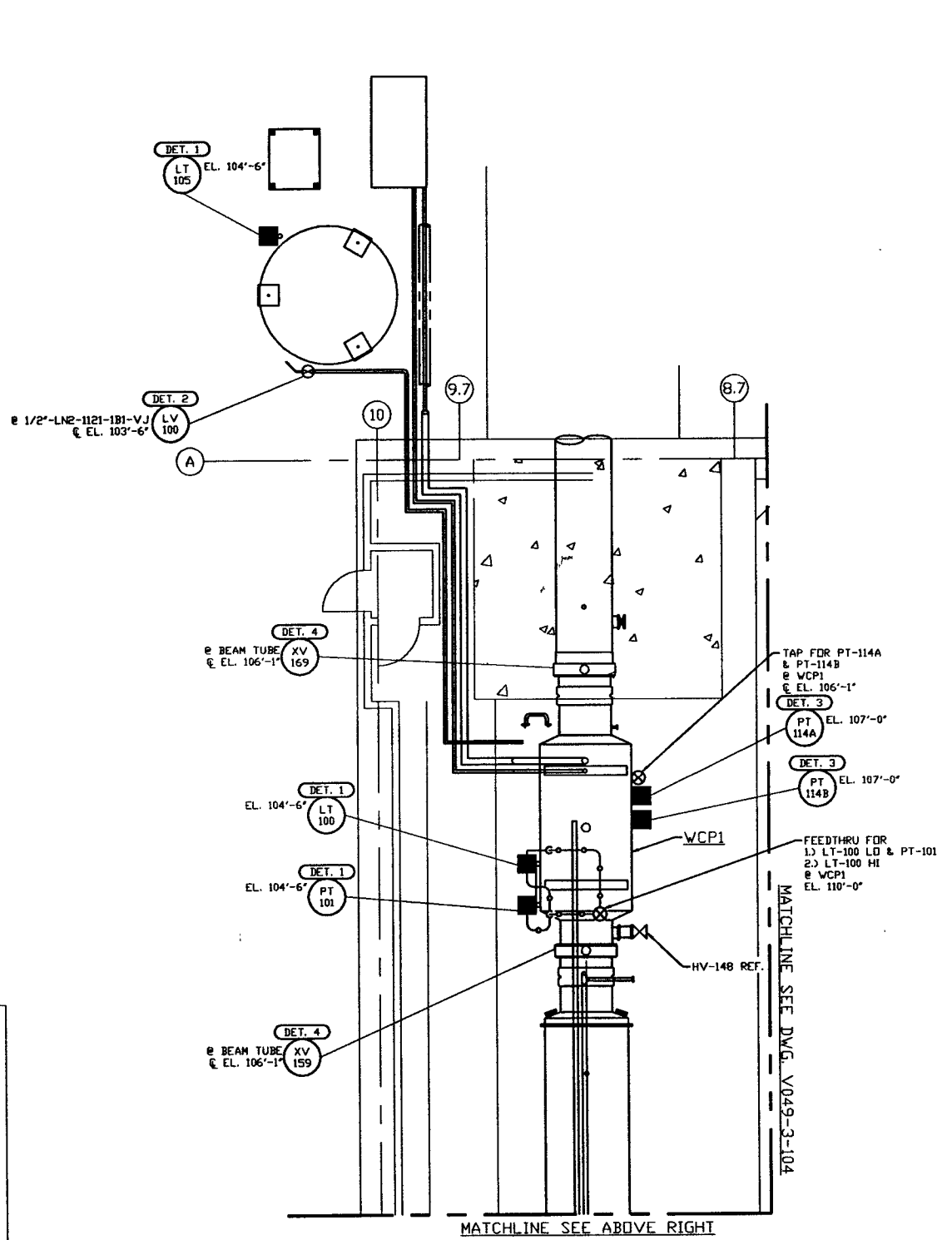


NOTES:

- 1) FOR INSTRUMENT INSTALLATION DETAILS SEE PSI DWG. #V049-3-00B.
- 2) ALL INSTRUMENT AIR & PROCESS TUBING SHALL BE 3/8" O.D. x .049 THK SEAMLESS SSTL TYPE 316.
- 3) TUBING ROUTING SHOWN ON PLAN IS DIAGRAMMATICAL AND SHALL BE FIELD VERIFIED SO AS TO OPTIMIZE SUPPORTING MEANS AND TO AVOID INTERFERENCES WITH CONDUIT & PIPING SYSTEMS.



NOT FOR CONSTRUCTION

LEGEND

- INSTRUMENT LOCATION
- XX INSTRUMENT IDENTIFICATION
- DET. X INSTALLATION DETAIL SEE NOTE 1
- ⊗ PROCESS TAP
- PROCESS TUBING (SEE NOTE 2)
- INSTRUMENT AIR (SEE NOTE 2)

INSTRUMENTS NOT LOCATED

TE 102
TE 103A
TE 103B
TE 103C
TY 103
FE 104
FI 104
PCV 180

INSTRUMENT AIR

PROPRIETARY AND CONFIDENTIAL	V049-3-104	INSTRUMENT PLAN DIAGONAL SECTION		
	V049-3-101	INSTRUMENT PLAN VERTEX SECTION		
	V049-3-00B	INSTRUMENT INSTALLATION DETAILS		
	V049-3-002	WASHINGTON OVERALL SITE PLAN		
	V049-3-001	GENERAL NOTES & LEGEND		
	V049-0-012	P & I D WASHINGTON LEFT BEAM MANIFOLD	V049-5-001	EQUIP. ARRANGEMENT WASHINGTON CORNER STATION
	DWG. NO.	DESCRIPTION	DWG. NO.	DESCRIPTION
		REFERENCE DRAWINGS		

UNLESS OTHERWISE SPECIFIED DIMENSIONS ARE IN INCHES									
TOLERANCES: FRACTIONAL & ANGULAR APPROX. ±.02" BEING ±.01" TWO PLACE DECIMAL & .005 THREE PLACE DECIMAL & .000 FINISHED SURFACE AND BREAK CORNERS IN BUT REMOVE ALL BURRS									
DO NOT SCALE THIS DRAWING	0	ISSUE FOR FDR							
USED ON:	REV	DESCRIPTION							
NEXT ASS'Y:		ISSUE DESCRIPTION							

PROCESS SYSTEMS INTERNATIONAL, INC.
 20 WALRUP DR. WESTBOROUGH, MASSACHUSETTS 01581 USA

INSTRUMENT PLAN
LIGO VACUUM EQUIPMENT
WASHINGTON SITE
LEFT BEAM MANIFOLD

CAD FILE: V0493102
 SIZE: D
 DWG. NO.: V049-3-102
 REV: 0

SCALE: 3/16" = 1' - 0"
 SHEET: 1 OF 1

DATE: 04.26.96
 DESIGNED BY: [Signature]
 CHECKED BY: [Signature]