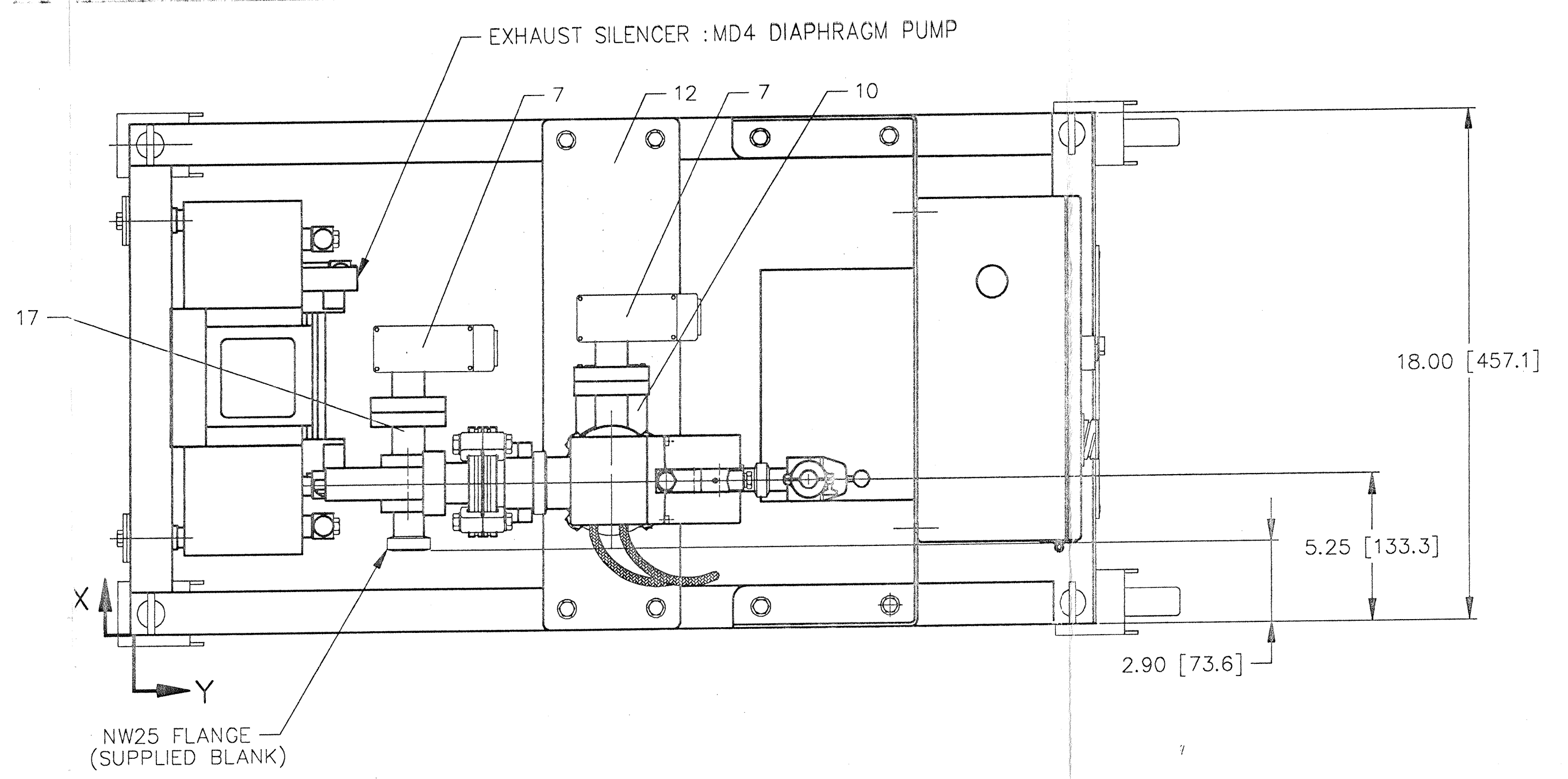
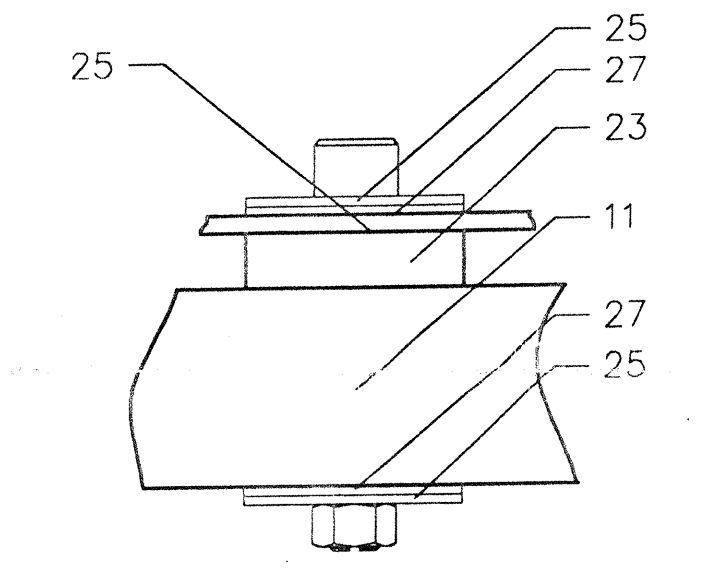
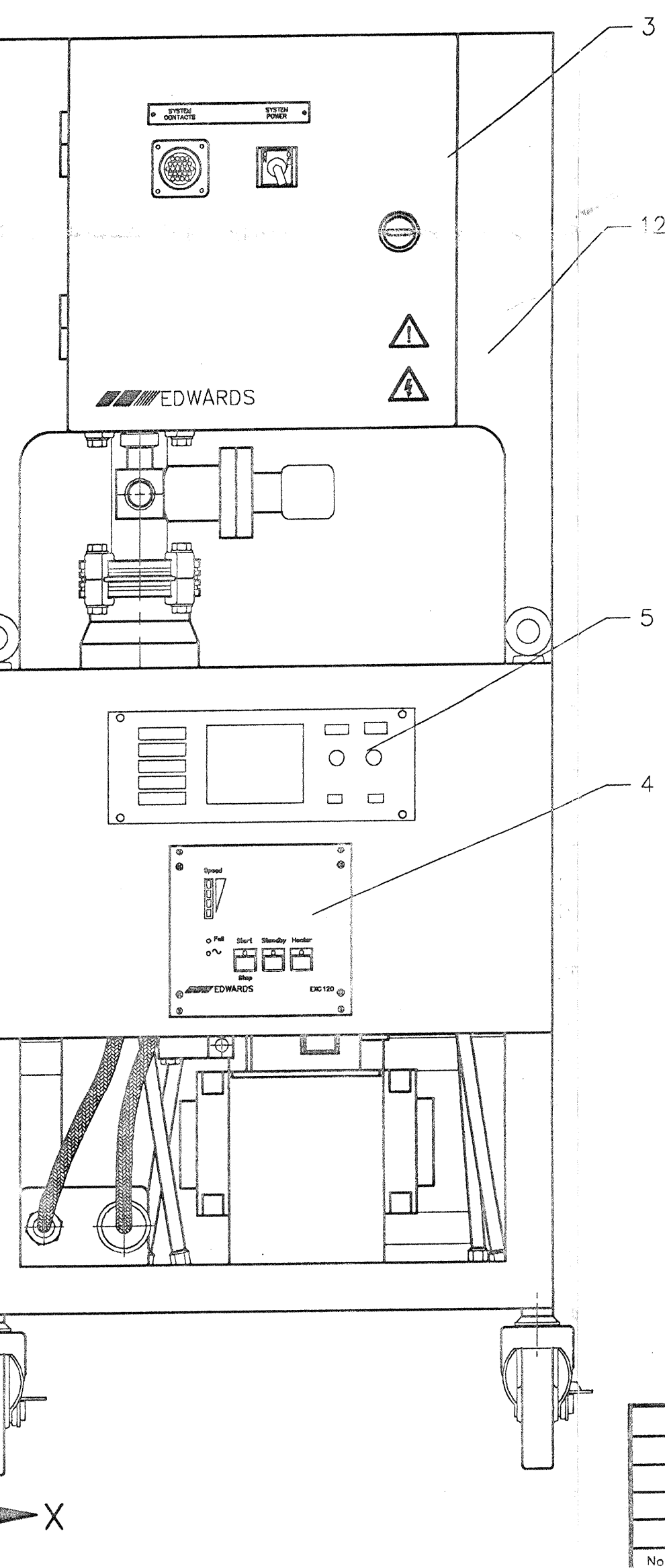
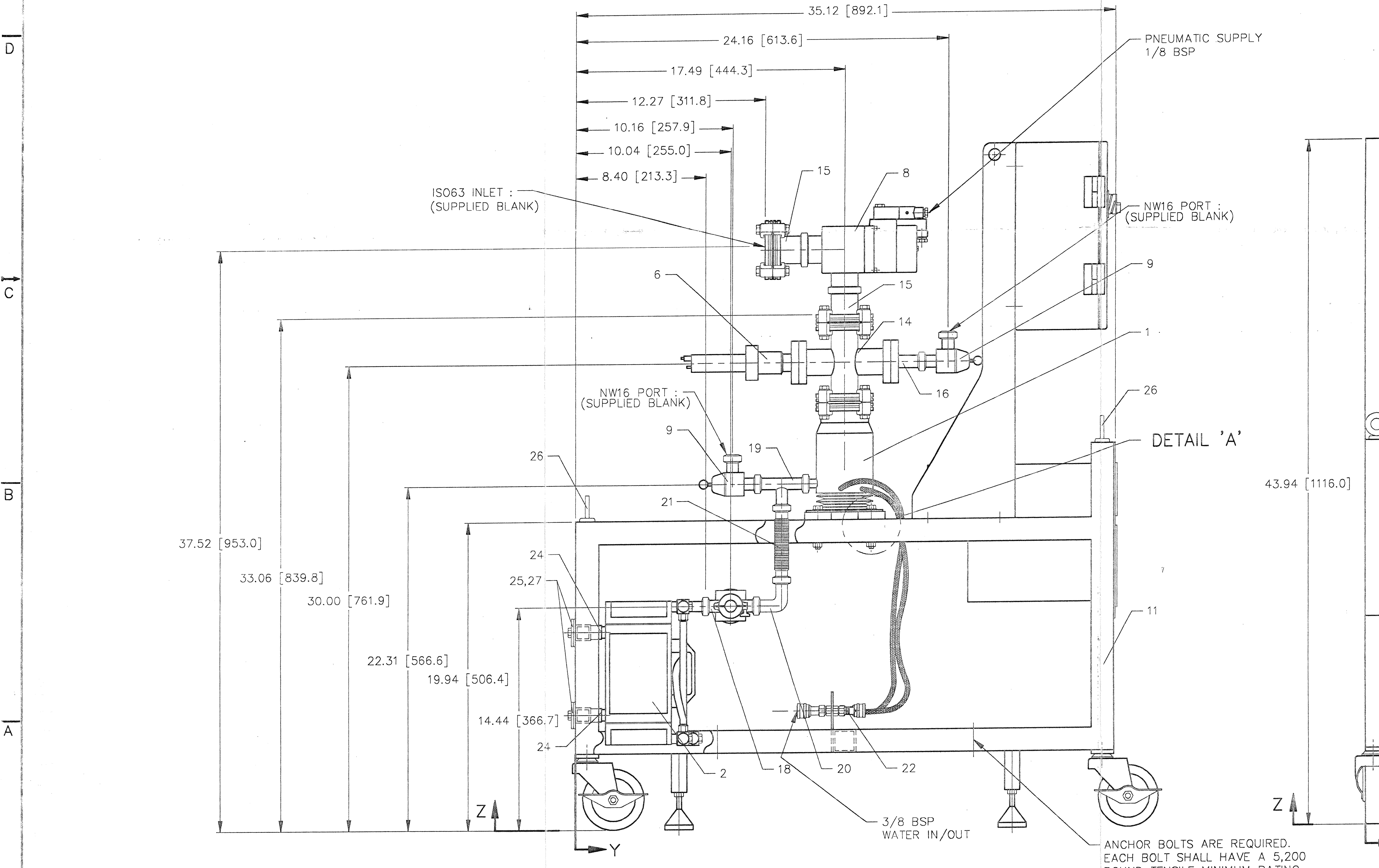


FACILITY REQUIREMENTS	
PNEUMATIC SUPPLY	
SUPPLY PRESSURE	40-60 PSI
1/8 BSP CONNECTION	
PROCESS COOLING WATER	
MAXIMUM PRESSURE	100 PSI
MINIMUM FLOWRATE AT 59°F	15 LPH
RECOMMENDED SUPPLY TEMP.	50-68°F
3/8 BSP CONNECTION	
ELECTRICAL	
SUPPLY	SEE ELECTRICAL SCHEMATIC DWG. NO. NGB050310
FULL LOAD AMPERAGE	
RECOMMENDED SERVICE	



1	TURBOMOLECULAR PUMP : EXT70	
2	DIAPHRAGM PUMP : MD4	
3	ELECTRICAL ENCLOSURE	
4	TURBO PUMP CONTROLLER : EXC120	
5	CONTROLLER : 937	
6	COLD CATHODE : 2.75 CONFLAT	
7	PIRANI GAUGE : 2.75 CONFLAT	
8	ISOLATION VALVE : PV40PKA	
9	ISOLATION VALVE : PV16MK	
10	COOLING FAN : ACX70	
11	FRAME : AUXILIARY TURBO CART	D4544
12	MOUNTING BRACKET : EXT70 TURBO PUMP	C3139
13	BRACKET : ELECTRICAL ENCLOSURE	C3122
14	SPOOL : NW63 x NW63 W/ 3 x 2.75 CONFLAT PORT	C3112
15	ADAPTOR : NW40/ISO63	
16	ADAPTOR : NW16/2.75 CF	
17	ADAPTOR : NW25/2.75CF	
18	CROSS : NW25/NW16	
19	TEE : NW16	
20	ELBOW : NW16	
21	BELLOWS : NW16	
22	H2O KIT : EXT70 TURBO PUMP	C3146
23	RUBBER SPACER : .50 TH x 1.75 O.D.	A3521
24	BASEPLATE ISOLATORS	A1753
25	WASHER	A3548
26	EYEBOLTS : M12 x 1.75 LG	
27	NEOPRENE WASHER	A3535



DETAIL 'A'
SCALE : 1/2=1.00
TYPICAL 4 PLACES

PSI DWG # V049-8-215

<input checked="" type="checkbox"/>	Approved
<input type="checkbox"/>	Not approved resubmit
<input type="checkbox"/>	Approved as noted
By	
Date	

APR 17 1996
PES 2 8 1830

ESTIMATED CENTER OF GRAVITY				
DESCRIPTION	WT	X	Y	Z
EXT70H/MD4/CART	275 LBS	7.50	21.20	23.00

ANCHOR BOLTS ARE REQUIRED. EACH BOLT SHALL HAVE A 5,200 POUND TENSILE MINIMUM RATING. RAWL OR EQUIVALENT. CUSTOMER SHALL SUPPLY BOLTS.

CUSTOMER SPEC. : V049-2-003

DO NOT SCALE DRAWING					THIS DRAWING, INCLUDING THE INFORMATION DATA, AND DESIGN IS THE PROPERTY OF EDWARDS HIGH VACUUM, INC. IT IS NOT TO BE COPIED, REPRODUCED, OR IN ANY MANNER DISSEMINATED WITHOUT THE WRITTEN PERMISSION OF EDWARDS.	
No.	Revision	Date	By	Appr.	Title	
Drawn	YS	Date	01-11-95		AUXILIARY TURBO PUMP CART EXT70H/MD4 W/ACCESSORIES	
Checked		Scale	1/4 = 1.00		UNLESS OTHERWISE STATED All dimensions in inches unless otherwise noted. All dimensions in millimeters unless otherwise noted. All dimensions to be as shown unless otherwise noted.	
Approved		Part No.	8490		UNLESS OTHERWISE STATED All dimensions in inches unless otherwise noted. All dimensions in millimeters unless otherwise noted. All dimensions to be as shown unless otherwise noted.	
Non-Std No.	NGB050300	Dwg. No.	D-4508		UNLESS OTHERWISE STATED All dimensions in inches unless otherwise noted. All dimensions in millimeters unless otherwise noted. All dimensions to be as shown unless otherwise noted.	
Customer	PSI (LIGO)				UNLESS OTHERWISE STATED All dimensions in inches unless otherwise noted. All dimensions in millimeters unless otherwise noted. All dimensions to be as shown unless otherwise noted.	

L10-0060822-01-V