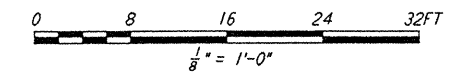
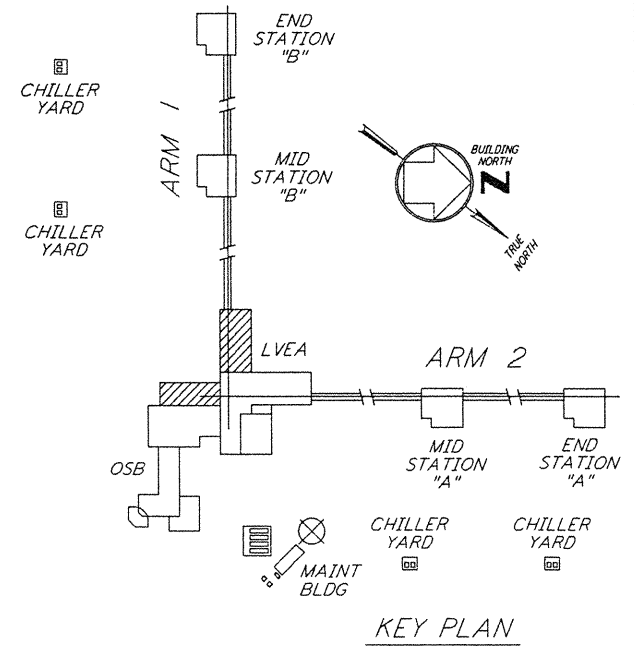
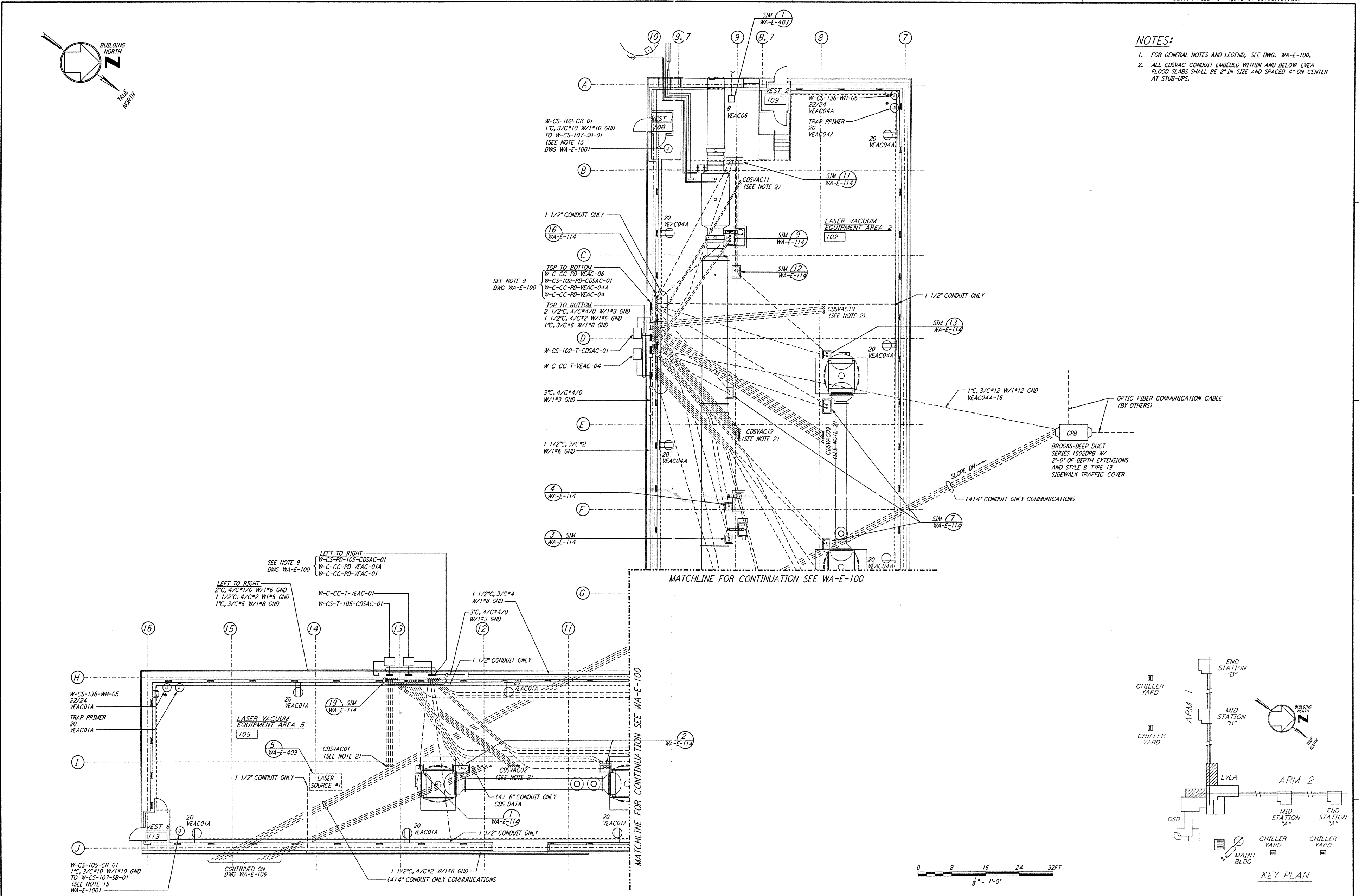


**NOTES:**

- 1. FOR GENERAL NOTES AND LEGEND, SEE DWG. WA-E-100.
- 2. ALL CDSVAC CONDUIT EMBEDDED WITHIN AND BELOW LVEA FLOOD SLABS SHALL BE 2" IN SIZE AND SPACED 4" ON CENTER AT STUB-UPS.

not be reproduced, copied, loaned, exhibited, or used in any other way, except by written consent from PARSONS to the borrower.

This document and the design it covers are the property of PARSONS. They are loaned only with the borrower's expressed written agreement that they will



NO.	DATE	BY	CHKD	ENGR	PROJ	DESCRIPTION
B	4-19-96	J.G.	J.E.	T.M.		FINAL DESIGN REVIEW
A	10-31-95			T.M.		PRELIMINARY DESIGN REVIEW

DRAWN	J. G.
CHECKED	
ENGINEER	
PROJ	

**PARSONS**  
100 WEST WALNUT STREET  
PASADENA, CALIFORNIA

**LIGO**  
CALIFORNIA INSTITUTE OF TECHNOLOGY  
MASSACHUSETTS INSTITUTE OF TECHNOLOGY

LASER INTERFEROMETER  
GRAVITATIONAL-WAVE OBSERVATORY  
SITE NO. 1 - HANFORD, WASHINGTON

TITLE	SCALE	CONTRACT NUMBER	PROJECT NUMBER
ELECTRICAL CORNER STATION LVEA AREAS 102, 105 RECEPTACLE & POWER PLAN	AS NOTED	PP 150969	8094
SHEET NUMBER		REVISIONS	
<b>WA-E-101</b>		1	