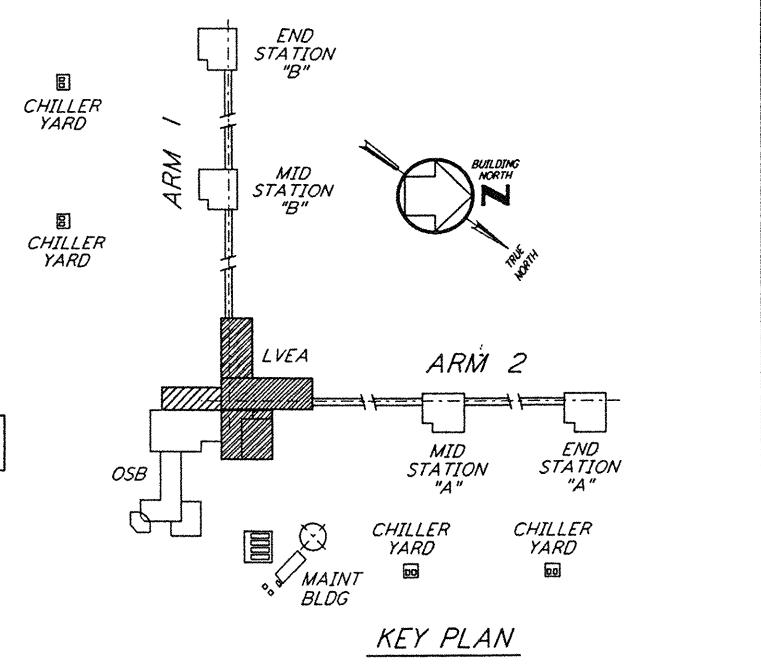


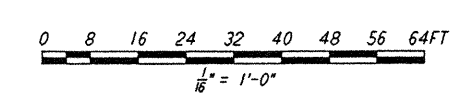
- EQUIPMENT FOUNDATION NOTES:**
1. CONCRETE FOR EQUIPMENT FOUNDATION SHALL BE PLACED IN MULTIPLE LIFTS OF ONE (1) FOOT OR MORE WITH A FINAL LIFT OF SIX (6) INCHES.
  2. FIBERMESH FIBERS (MANUFACTURED BY FIBERMESH, CHATTANOOGA, TENNESSEE OR EQUAL) SHALL BE MIXED WITH CONCRETE FOR THE FINAL LIFT OF SIX (6) INCHES FOR THE EQUIPMENT FOUNDATION.
  3. CONCRETE SURFACE SHALL BE CLEANED, RAKED AND ROUGHENED TO DEVELOPE BOND BETWEEN CONCRETE LAYERS.
  4. TOP REINFORCEMENT OF EQUIPMENT FOUNDATION SHALL HAVE 1/2" CLEAR COVER. CONTRACTOR SHALL TAKE ALL THE NECESSARY PRECAUTIONS TO MAINTAIN UNIFORM COVER.
  5. CONTRACTOR SHALL USE FOUR (4) SETS OF EQUIPMENTS AND CREWS TO PLACE LVEA EQUIPMENT FOUNDATION FROM FOUR (4) ENDS SIMULTANEOUSLY. CONTRACTOR SHALL HAVE SPARE PUMPS TO ENSURE UNINTERRUPTED PLACEMENT OF CONCRETE.
  6. EQUIPMENT FOUNDATION SHALL BE CURED BY MEMBRANE CURING METHOD AS PER SPECIFICATIONS.

- NOTES:**
1. FOR ADDITIONAL REINFORCEMENT AT 90° FOUNDATION DIRECTION CHANGES IN STRIP FOOTING SEE DETAIL (A) SIM.
  2. FOR GENERAL NOTES, ABBREVIATIONS & SYMBOLS SEE DRAWING WA-S-001.
  3. FOR SLAB ON GRADE DETAILS SEE DRAWING WA-S-002.
  4. FOR BASE ANGLE AT EDGE OF SLAB OR TOP OF 8" CONCRETE WALL, SEE FRAMING ELEVATIONS AND DETAIL (A) WA-S-003.
  5. FOR FOUNDATION SCHEDULE AND DETAILS SEE DRAWING WA-S-404.



FOR FLOOR SLOPE SEE ARCHITECTURAL DRAWINGS

DATUM POINT EL 100'-0" = EL 531.11'



**CORNER STATION FOUNDATION PLAN**  
1/8" = 1'-0"

This document and its design or drawings are the property of PARSONS. They are loaned only with the borrower's expressed written agreement that they will not be used, copied, exhibited, or used in any other way, except by written consent from PARSONS to the borrower.

NO.	DATE	BY	CHKD	ENGR	PROJ	DESCRIPTION
B	4-19-96	MCS	DM	HP	TDM	FINAL DESIGN REVIEW
A	10-31-95					PRELIMINARY DESIGN REVIEW

DRAWN	MCS
CHECKED	
ENGINEER	
PROJ	

**PARSONS**  
100 WEST WALNUT STREET  
PASADENA, CALIFORNIA

**LIGO**  
CALIFORNIA INSTITUTE OF TECHNOLOGY  
MASSACHUSETTS INSTITUTE OF TECHNOLOGY

LASER INTERFEROMETER  
GRAVITATIONAL-WAVE OBSERVATORY  
SITE NO. 1 - HANFORD, WASHINGTON

TITLE	SCALE	CONTRACT NUMBER	PROJECT NUMBER
STRUCTURAL CORNER STATION LVEA FOUNDATION PLAN	AS NOTED	PP150969	8094
SHEET NUMBER		REVISIONS	
WA-S-101		B	

LIGO-D940465-B-F | LIGOWAF.BOR