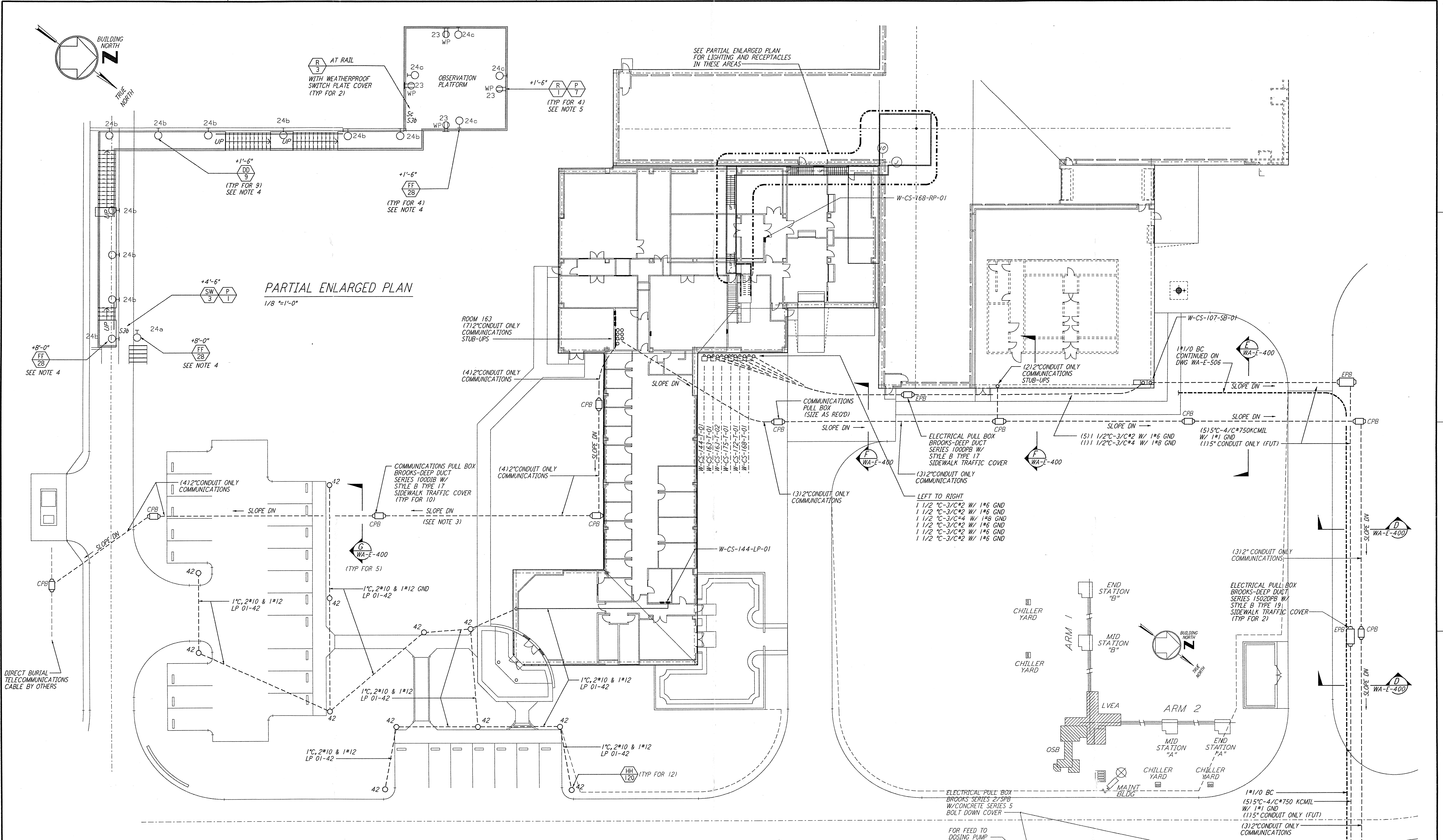
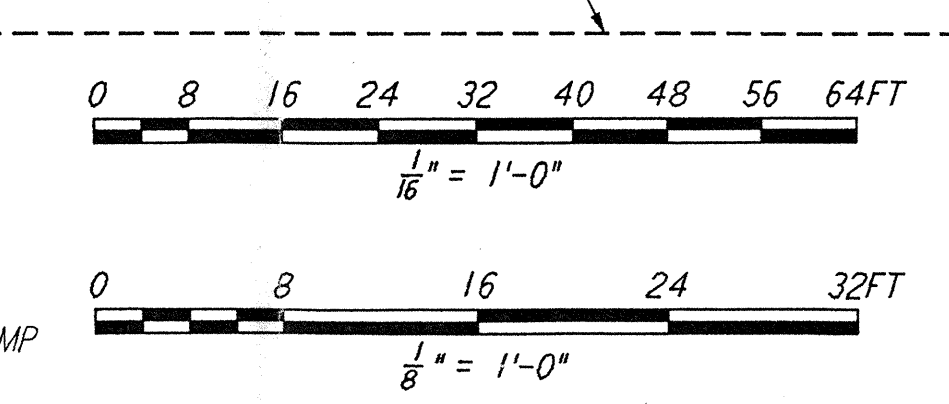


This document and the design it covers are the property of PARSONS. They are loaned only with the borrower's expressed written agreement that they will not be reproduced, copied, loaned, exhibited, or used in any other way, except by written consent from PARSONS to the borrower.



**NOTES:**

- COMMUNICATIONS CONDUIT SHALL STUB UP INSIDE THE ACCESS FLOOR CAVITY TO AN ELEVATION THAT WILL PREVENT FLOODING OF CAVITY IF OUTDOOR UNDERGROUND CONDUIT RUNS ARE FILLED WITH WATER.
- POLYETHYLENE PULL ROPE SHALL BE PROVIDED BETWEEN PULL BOXES AND STUB-UPS FOR EACH CONDUIT.
- DUCT BANK SHALL SLOPE DOWN AWAY FROM BUILDING AS SHOWN ON PLAN.
- CIRCUITS SHOW FEEDING THESE ITEMS ARE FROM PANEL W-CS-168-RP-01.
- CIRCUITS SHOW FEEDING THESE ITEMS ARE FROM PANEL W-CS-163-RP-01.



NO.	DATE	BY	CHKD	ENGR	PROJ	DESCRIPTION
A	4-19-96	M.M.	J.H.	W.S.	DM	FINAL DESIGN REVIEW & BID

NO.	DATE	BY	CHKD	ENGR	PROJ	DESCRIPTION

DRAWN	K. R.
CHECKED	
ENGINEER	
PROJ	

**PARSONS**  
 100 WEST WALNUT STREET  
 PASADENA, CALIFORNIA

**LIGO**  
 CALIFORNIA INSTITUTE OF TECHNOLOGY  
 MASSACHUSETTS INSTITUTE OF TECHNOLOGY

LASER INTERFEROMETER  
 GRAVITATIONAL-WAVE OBSERVATORY  
 SITE NO. 1 - HANFORD, WASHINGTON

**ELECTRICAL CORNER STATION 3RD INTERFEROMETER PWR & LTG PARKING & OBSERVATION PLAN**

AS NOTED PPI50969 8094  
**WA-E-507**

LIGO-D960436-A-O  
 LIGOWAF3.BDR