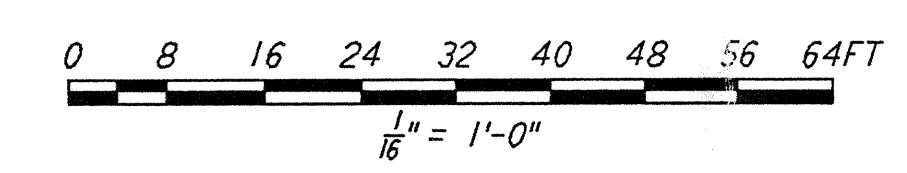
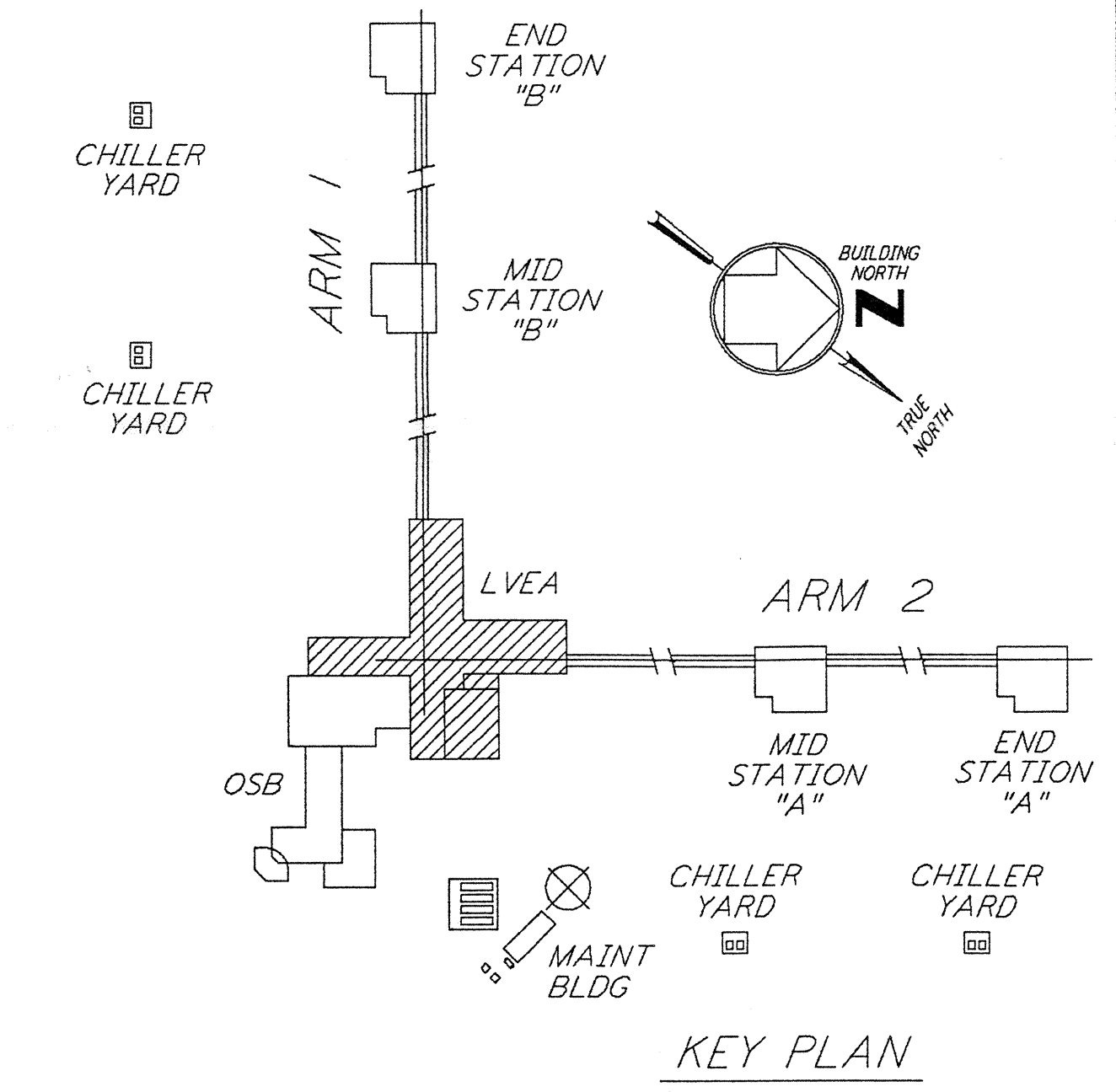
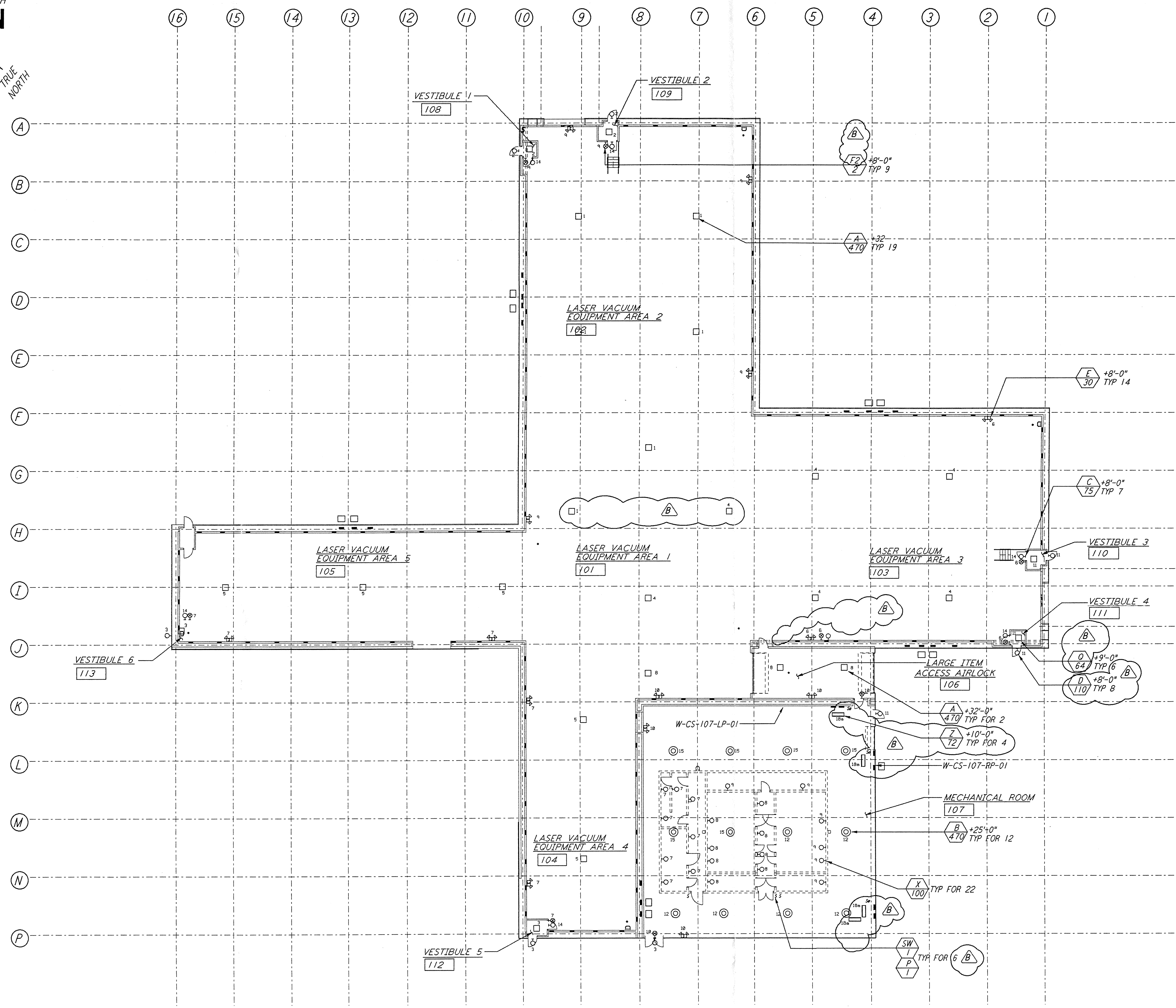
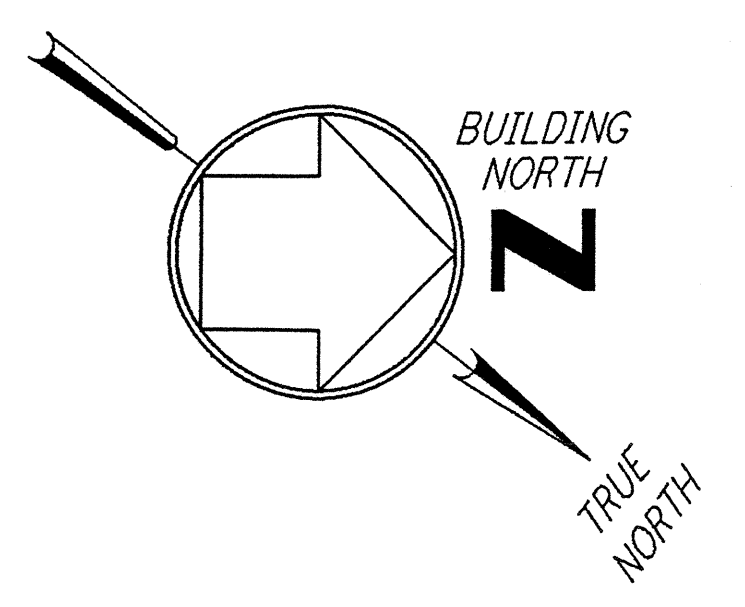


GENERAL NOTES:

- FOR STANDARD SYMBOLS, ABBREVIATIONS AND ACRONYMS SEE DWG. WA-E-001.
- FOR ELECTRICAL SYMBOLS SEE DWG. WA-E-007.
- FOR LIGHTING SCHEDULE SEE DWG. WA-E-007.
- FOR PANEL SCHEDULES SEE DWG. WA-E-117.
- ALL CONDUIT RUNS ARE SHOWN DIAGRAMMATIC ONLY. CONTRACTOR SHALL COORDINATE FINAL INSTALLATION TO AVOID CONFLICTS WITH OTHER CRAFTS (DISCIPLINES).
- ALL CONDUITS INSIDE THE BLDG. SHALL BE EMT, 3/4" MINIMUM SIZE, CONDUITS OUTSIDE THE BLDG. SHALL BE RIGID STEEL GALVANIZED, 3/4" MINIMUM SIZE.
- MINIMUM LTG CKT WIRE SIZE SHALL BE #10 AWG, STRANDED COPPER, TYPE THWN.
- FOR WIRE SPLICING ALLOWABLE FILL IN CONDUIT BODIES AND BOXES, REFER TO N.E.C. 1993 ARTICLE 370-16(a). CONDUIT BODIES MINIMUM SIZE SHALL BE 1 1/2".
- JUNCTION BOXES WITHIN ACOUSTIC CEILING SPACE SHALL BE 4" X 4" PRESSED STEEL.
- TO ENSURE CONTINUITY OF RACEWAY AS A GROUND, ALL EMT CONDUIT FITTINGS SHALL BE COMPRESSION TYPE. ALL FLEXIBLE CONDUITS SHALL BE STEEL U.L. LISTED FOR GROUNDING.
- UPON AC POWER FAILURE, FLUORESCENT EMERGENCY BALLAST AUTOMATICALLY SWITCHES TO EMERGENCY MODE, ILLUMINATING ONE LAMP FOR A MINIMUM OF 90 MINUTES, WHEN AC POWER IS RESTORED, THE EMERGENCY BALLAST TRANSFERS TO CHARGING MODE.
- LIGHTING FIXTURE MANUFACTURER SHALL ADD TO THE EXISTING BALLAST IN FLUORESCENT LIGHT FIXTURES A BODINE COMPANY EMERGENCY BALLAST MODEL B50, WHEN THE 'E' SUFFIX HAS BEEN ADDED TO A LIGHT FIXTURE ON PLAN; TWO (2) TUBE LIGHT FIXTURES SHALL HAVE ONE (2) LAMP; THREE (3) TUBE LIGHT FIXTURES SHALL HAVE ONE (2) LAMP EMERGENCY BALLAST TO OPERATE OUTER LAMP, REFER TO MANUFACTURERS CONNECTION DIAGRAM. (277V)
- EACH THREE PHASE SET OF CIRCUITS SHALL HAVE ONE (1) COMMON GROUND GREEN WIRE & ONE FULL CURRENT NEUTRAL.
- ALL SWITCHES INSTALLED ON GYPSUM BOARD SHALL BE AT EL. +4'-6" ON 45 BOX, (FLUSH MOUNTED) U.O.M. WITH CONCEALED CONDUIT DROP FROM CEILING, SEE PLATE SCHEDULE DWG. WA-E-007.
- ALL CONDUIT RUNS SHOWN WITHOUT HASHED MARKS, DENOTE 3/4" C. 3/C#10.
- ALL OUTDOOR CONDUITS SHALL BE INSTALLED WITH A DRAIN FITTING LOCATED AT THE LOWEST POINT OF THE RUN.
- FOR ARCHITECTURAL REFLECTED CEILING PLAN SEE DWG. WA-A-121.
- ALL OPENING THROUGH BUILDING WALLS SHALL BE EFFECTIVELY SEALED TO PROVIDE A WEATHER-TIGHT PENETRATION FROM OUTSIDE ELEMENTS, WALL PENETRATION OF CONDUITS SHALL BE THROUGH METAL FLASHING ATTACHED TO BUILDING WALL. SEALANT SHALL BE SILICONE ADHESIVE, ALL WEATHER GE-133 (OR EQUAL).
- FOR STANDARD INSTALLATION DETAILS SEE DWG. WA-E-406.
- CONDUIT DROP FOR METAL HALIDE PENDANT FIXTURES SHALL HANG FROM T-FITTING AND SWIVEL TYPE HANGER, CROUSE-HINDS #4HG22111 (OR EQUAL).

This document and the design it covers are the property of PARSONS. They are loaned only with the borrower's expressed written agreement that they will not be reproduced, copied, loaned, exhibited, or used in any other way, except by written consent from PARSONS to the borrower.



NO.	DATE	BY	CHKD	ENGR	PROJ	DESCRIPTION
B	5-22-96	KAF	mm			BID ADDENDUM #2
A	4-19-96				TDM	FINAL DESIGN REVIEW & BID

DRAWN	K. R.
CHECKED	
ENGINEER	
PROJ	

PARSONS
 100 WEST WALNUT STREET
 PASADENA, CALIFORNIA

LIGO
 CALIFORNIA INSTITUTE OF TECHNOLOGY
 MASSACHUSETTS INSTITUTE OF TECHNOLOGY

LASER INTERFEROMETER
 GRAVITATIONAL-WAVE OBSERVATORY
 SITE NO. 1 - HANFORD, WASHINGTON

TITLE	SCALE	CONTRACT NUMBER	PROJECT NUMBER
ELECTRICAL CORNER STATION 3RD INTERFEROMETER LVEA LIGHTING PLAN	AS NOTED	PP150969	8094
SHEET NUMBER	REVISIONS		
WA-E-505			