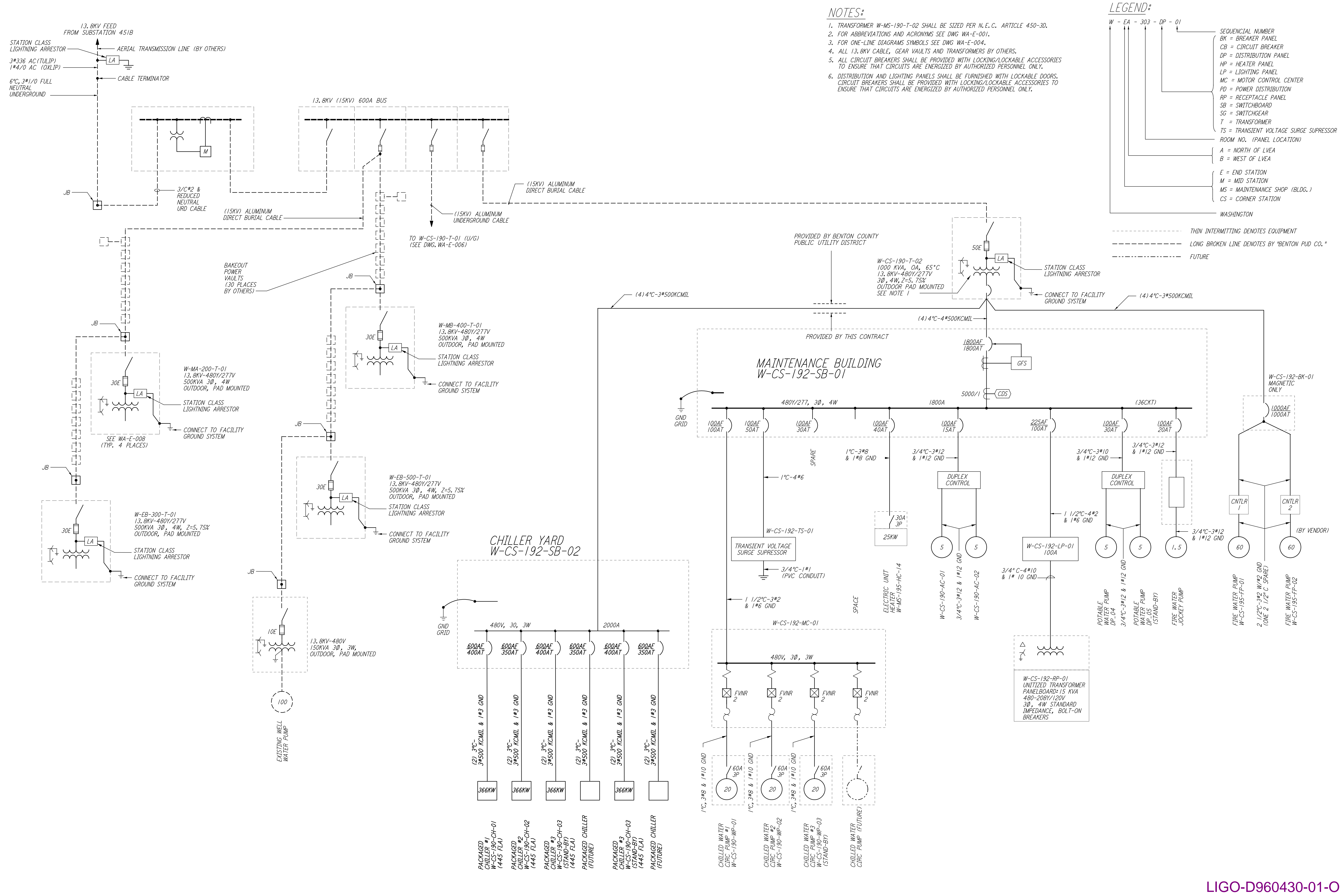


This document and the design it covers are the property of PARSONS. They are loaned only with the borrower's expressed written agreement that they will not be reproduced, copied, loaned, exhibited, or used in any other way, except by written consent from PARSONS to the borrower.



- NOTES:**
1. TRANSFORMER W-MS-190-T-02 SHALL BE SIZED PER N.E.C. ARTICLE 450-3D.
 2. FOR ABBREVIATIONS AND ACRONYMS SEE DWG WA-E-001.
 3. FOR ONE-LINE DIAGRAMS SYMBOLS SEE DWG WA-E-004.
 4. ALL 13.8KV CABLE, GEAR VAULTS AND TRANSFORMERS BY OTHERS.
 5. ALL CIRCUIT BREAKERS SHALL BE PROVIDED WITH LOCKING/LOCKABLE ACCESSORIES TO ENSURE THAT CIRCUITS ARE ENERGIZED BY AUTHORIZED PERSONNEL ONLY.
 6. DISTRIBUTION AND LIGHTING PANELS SHALL BE FURNISHED WITH LOCKABLE DOORS. CIRCUIT BREAKERS SHALL BE PROVIDED WITH LOCKING/LOCKABLE ACCESSORIES TO ENSURE THAT CIRCUITS ARE ENERGIZED BY AUTHORIZED PERSONNEL ONLY.

- LEGEND:**
- W - EA - 303 - DP - 01
 - SEQUENTIAL NUMBER
 - BK = BREAKER PANEL
 - CB = CIRCUIT BREAKER
 - DP = DISTRIBUTION PANEL
 - HP = HEATER PANEL
 - LP = LIGHTING PANEL
 - MC = MOTOR CONTROL CENTER
 - PD = POWER DISTRIBUTION
 - RP = RECEPTACLE PANEL
 - SB = SWITCHBOARD
 - SG = SWITCHGEAR
 - T = TRANSFORMER
 - TS = TRANSIENT VOLTAGE SURGE SUPPRESSOR
 - ROOM NO. (PANEL LOCATION)
 - A = NORTH OF LVEA
 - B = WEST OF LVEA
 - E = END STATION
 - M = MID STATION
 - MS = MAINTENANCE SHOP (BLDG.)
 - CS = CORNER STATION
- WASHINGTON
- THIN INTERMITTING DENOTES EQUIPMENT
 - - - LONG BROKEN LINE DENOTES BY 'BENTON PUD CO.'
 - - - FUTURE

NO.	DATE	BY	CHKD	ENGR	PROJ	DESCRIPTION
1	6-15-98	J. G.				ISSUED FOR AS-BUILT

ISSUED FOR CONSTRUCTION		
DRAWN	M. M.	6-25-96
CHECKED	J. K.	7-3-96
ENGINEER	K. R.	7-3-96
PROJ	M. D. W.	7-8-96
AS-BUILT DRAWINGS		



LIGO-D960430-01-O

LASER INTERFEROMETER
GRAVITATIONAL-WAVE OBSERVATORY
SITE NO. I - HANFORD, WASHINGTON

TITLE	ELECTRICAL CORNER STATION 3RD INTERFEROMETER SINGLE LINE DIAGRAM	SCALE	NONE	DESIGN NUMBER	PP150969	PROJECT NUMBER	8094
SHEET NUMBER	WA-E-501	REVISIONS					