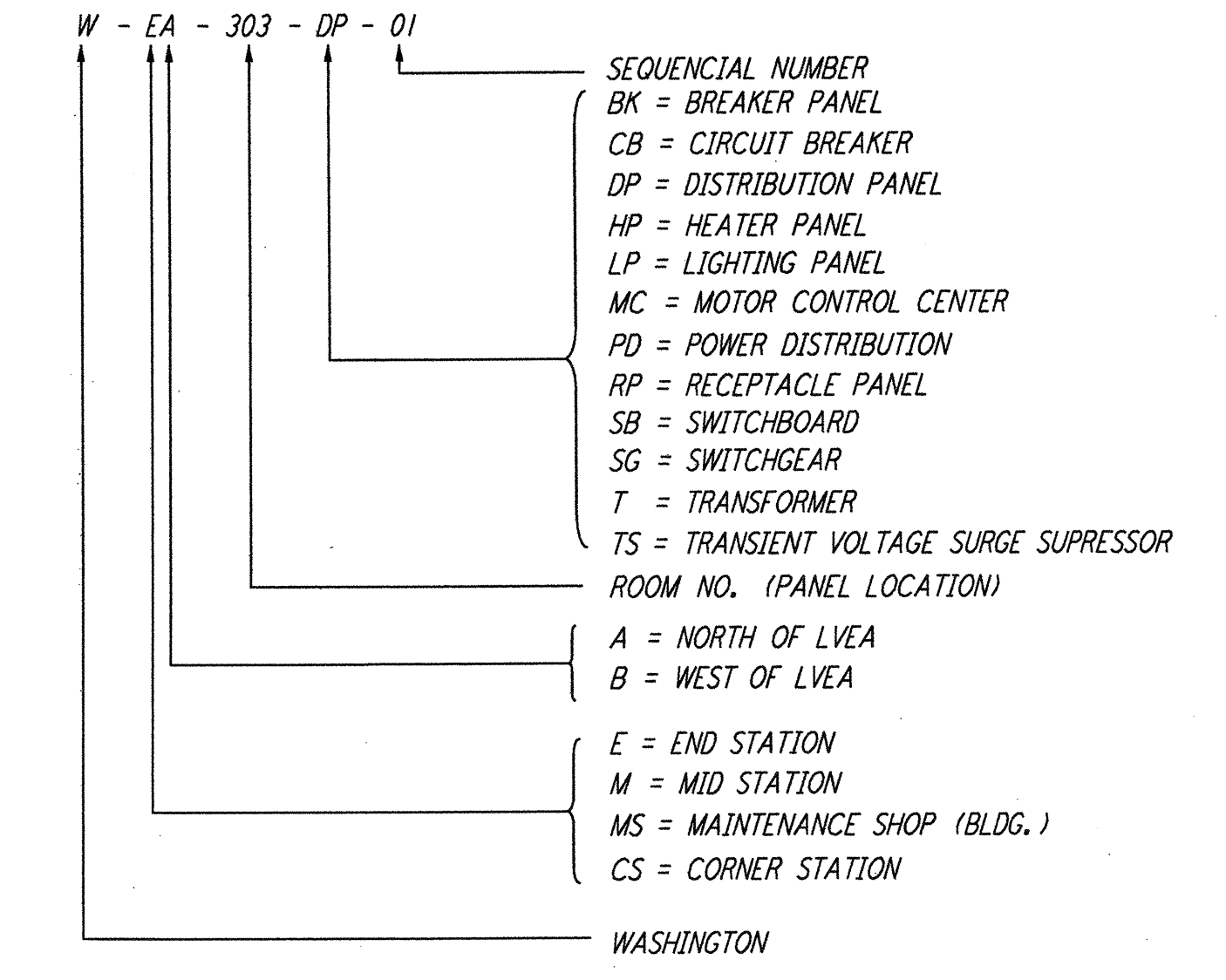


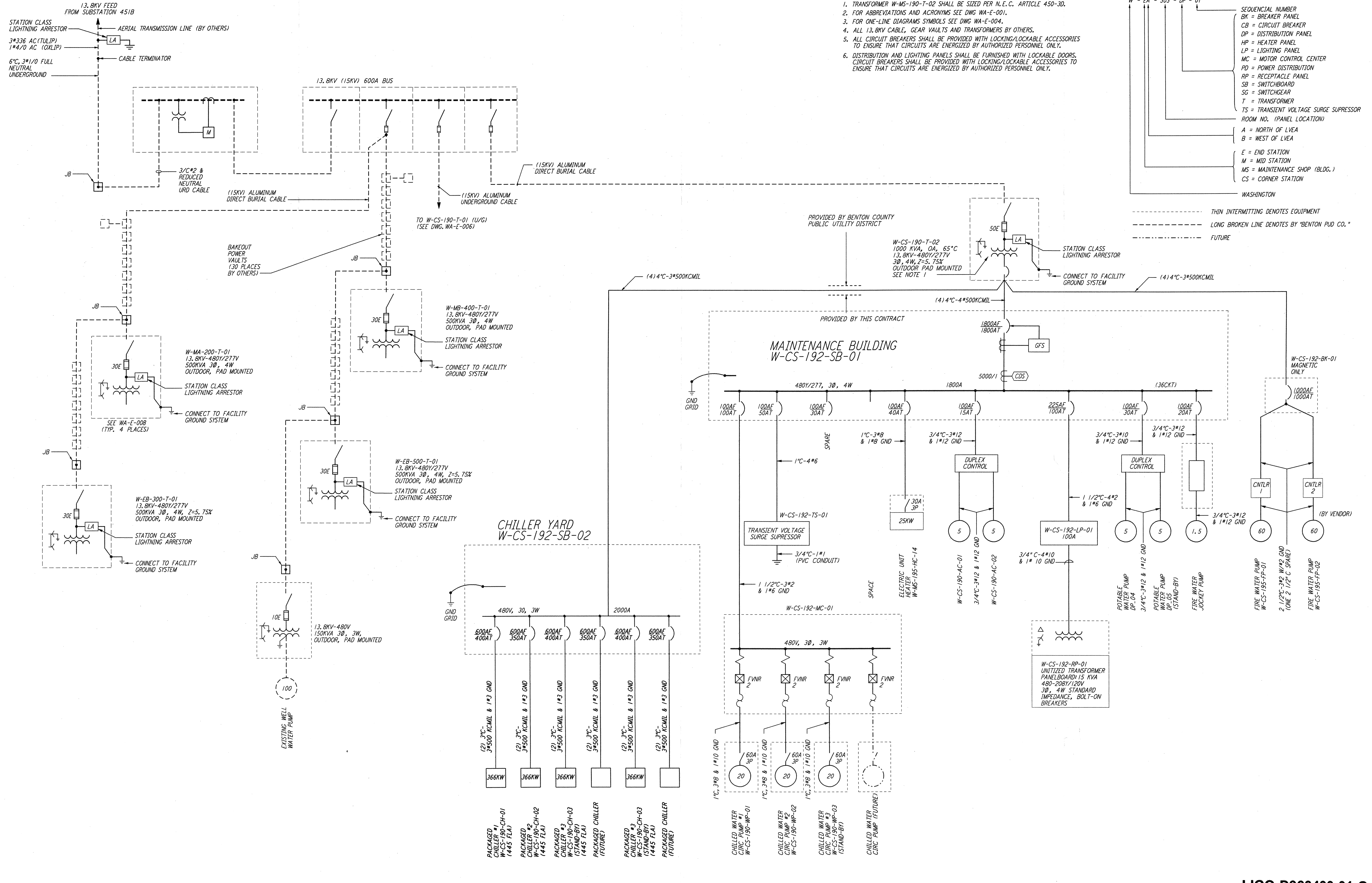
NOTES:

1. TRANSFORMER W-MS-190-T-02 SHALL BE SIZED PER N.E.C. ARTICLE 450-30.
2. FOR ABBREVIATIONS AND ACRONYMS SEE DWG WA-E-001.
3. FOR ONE-LINE DIAGRAMS SYMBOLS SEE DWG WA-E-004.
4. ALL 13.8KV CABLE, GEAR VAULTS AND TRANSFORMERS BY OTHERS.
5. ALL CIRCUIT BREAKERS SHALL BE PROVIDED WITH LOCKING/LOCKABLE ACCESSORIES TO ENSURE THAT CIRCUITS ARE ENERGIZED BY AUTHORIZED PERSONNEL ONLY.
6. DISTRIBUTION AND LIGHTING PANELS SHALL BE FURNISHED WITH LOCKABLE DOORS, CIRCUIT BREAKERS SHALL BE PROVIDED WITH LOCKING/LOCKABLE ACCESSORIES TO ENSURE THAT CIRCUITS ARE ENERGIZED BY AUTHORIZED PERSONNEL ONLY.

LEGEND:



THIN INTERMITTING DENOTES EQUIPMENT
 LONG BROKEN LINE DENOTES BY "BENTON PUD CO."
 FUTURE



This document and the design it covers are the property of PARSONS. They are loaned only with the borrower's expressed written agreement that they will not be reproduced, copied, loaned, exhibited, or used in any other way, except by written consent from PARSONS to the borrower.

NO.	DATE	BY	CHKD	ENGR	PROJ	DESCRIPTION
1	6-15-98	J.G.				ISSUED FOR AS-BUILT

ISSUED FOR CONSTRUCTION	
DRAWN	M.M. 6-25-96
CHECKED	J.K. 7-3-96
ENGINEER	K.R. 7-3-96
PROJ	M.D.W. 7-8-96

AS-BUILT DRAWINGS

100 WEST WALNUT STREET
PASADENA, CALIFORNIA

CALIFORNIA INSTITUTE OF TECHNOLOGY
MASSACHUSETTS INSTITUTE OF TECHNOLOGY

LASER INTERFEROMETER
GRAVITATIONAL-WAVE OBSERVATORY
SITE NO. 1 - HANFORD, WASHINGTON

TITLE	SCALE	CONTRACT NUMBER	PROJECT NUMBER				
ELECTRICAL CORNER STATION 3RD INTERFEROMETER SINGLE LINE DIAGRAM	NONE	PPI50969	8094				
SHEET NUMBER	REVISIONS						
WA-E-501	<table border="1"> <tr> <td>NO.</td> <td>DESCRIPTION</td> </tr> <tr> <td> </td> <td> </td> </tr> </table>			NO.	DESCRIPTION		
NO.	DESCRIPTION						