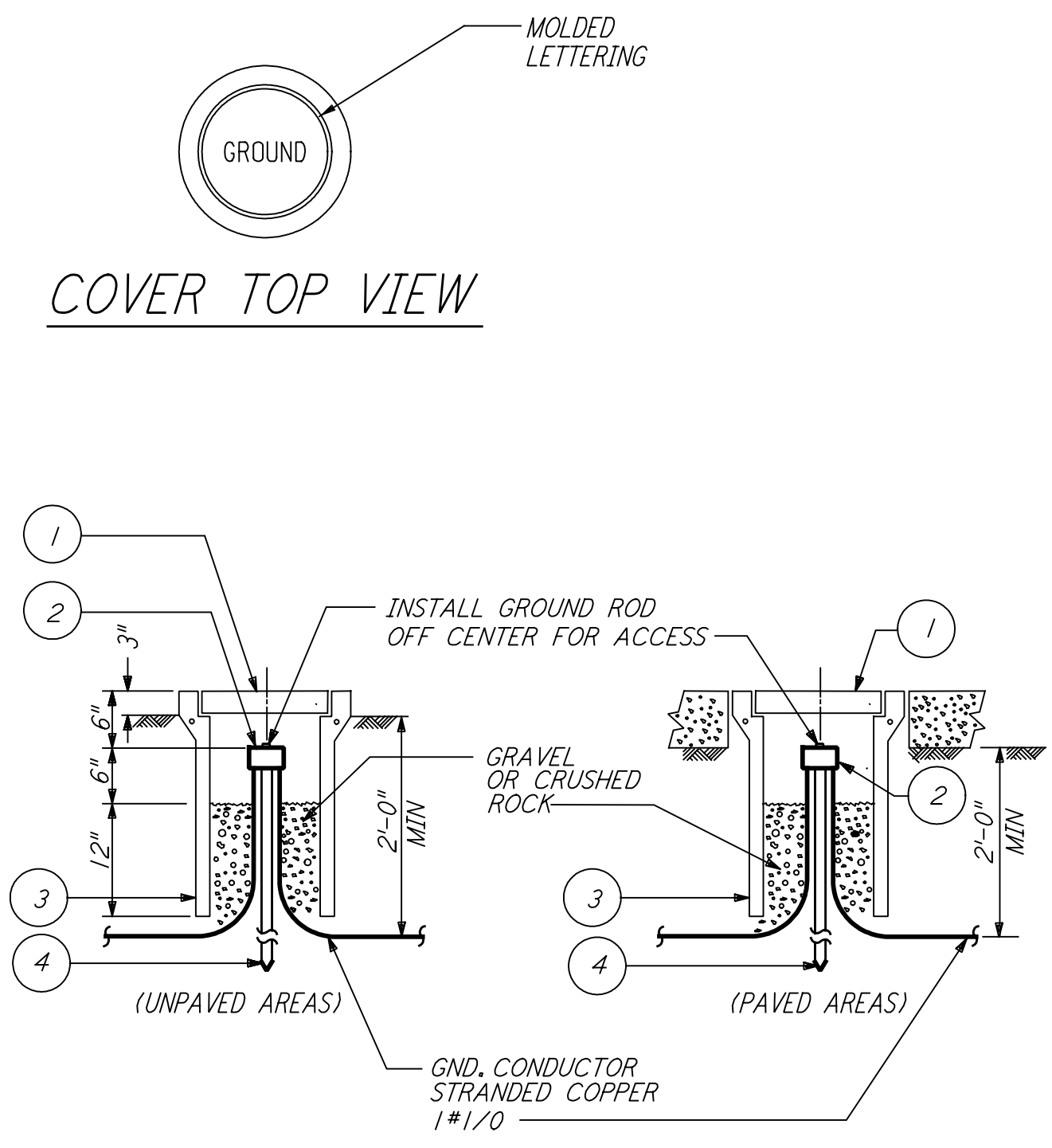


FRONT VIEW

SIDE VIEW

GROUNDING CONNECTION BOX

1 REF



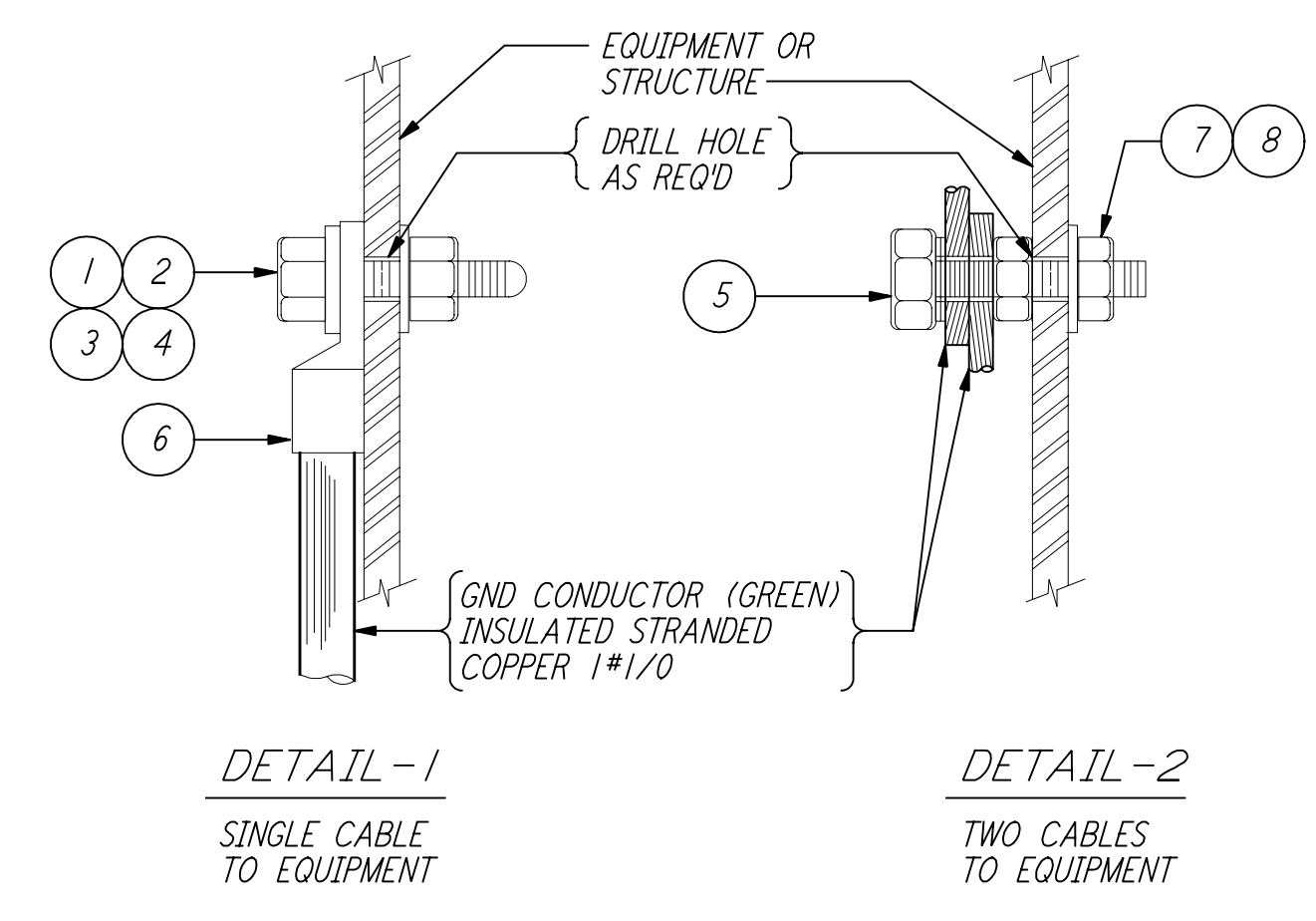
COVER TOP VIEW

LIST OF MATERIAL

ITEM NO.	QTY	DESCRIPTION
1	1	BROOKS #9 CONCRETE COVER WT=1 LBS WITH 9 GAGE RE-BAR
2	1	CONNECTOR 3 WIRES X 3/4" GROUND ROD BURNDY #GK6426
3	1	BROOKS #9 BODY (2" DIA X 24" LONG) WT=49 LBS
4	1	GROUND ROD COPPER-CLAD STEEL 3/4" DIA X 10'-0" COPPER WELD

GROUND WELL

2 REF



DETAIL-1

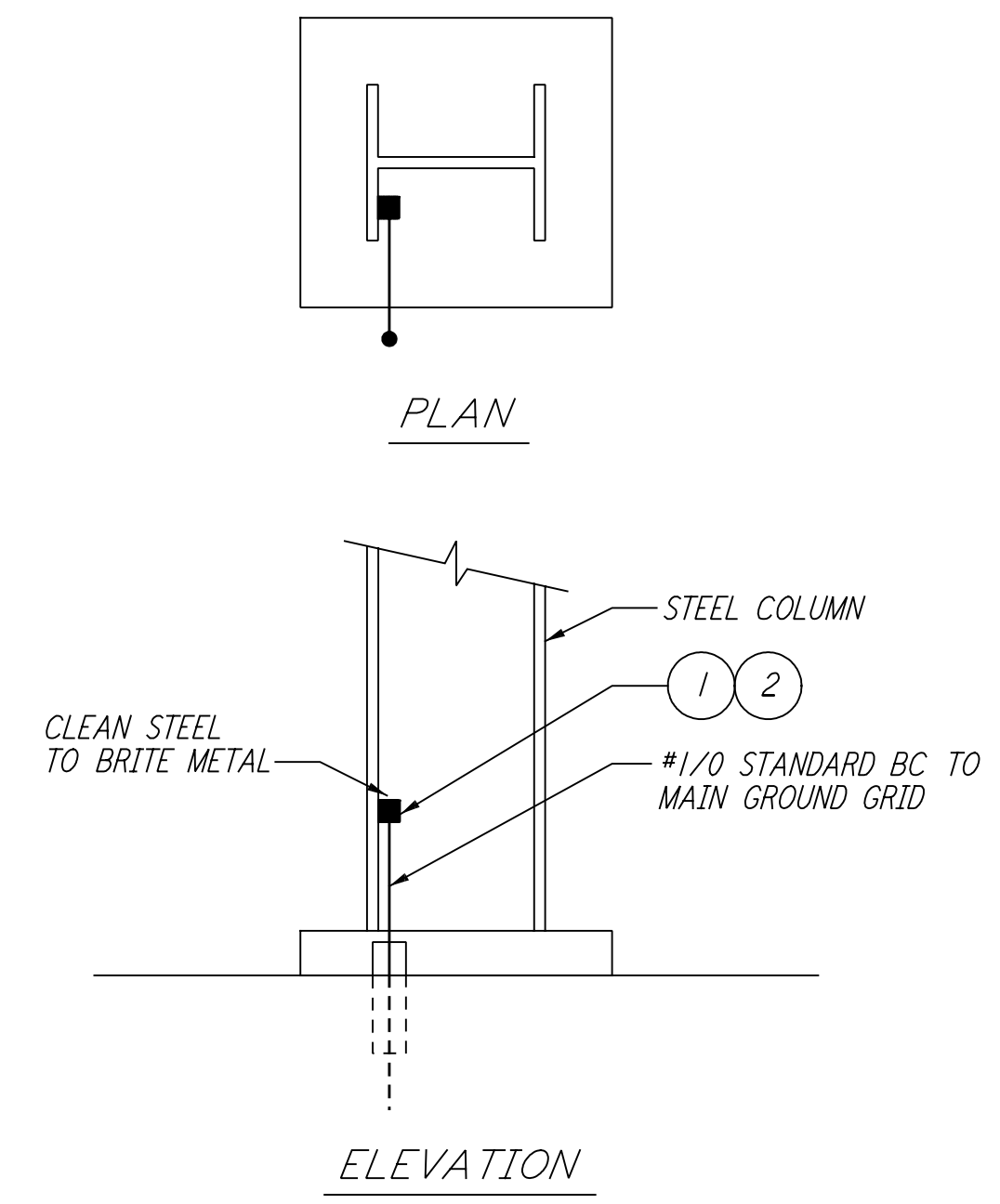
DETAIL-2

LIST OF MATERIAL

ITEM NO.	QTY	DESCRIPTION
1	1	BOLT, HEX HD SST (SIZE AS REQ'D)
2	1	NUT, HEX, SST (SIZE AS REQ'D)
3	1	FLAT WASHER, RD SST (SIZE AS REQ'D)
4	1	LOCK WASHER, SPRING SST (SIZE AS REQ'D)
5	1	SERVIT POST, TWO #2-#1/0 WIRES SHORT STUD BURNDY TYPE K2C25
6	1	GND CONNECTOR - STRANDED BURNDY QUICK LUG QA
7	1	NUT, 1/2"-13 HEX DURUM
8	1	LOCKWASHER, 1/2", SPRING, DURUM

EQUIPMENT GROUNDING

3 REF



PLAN

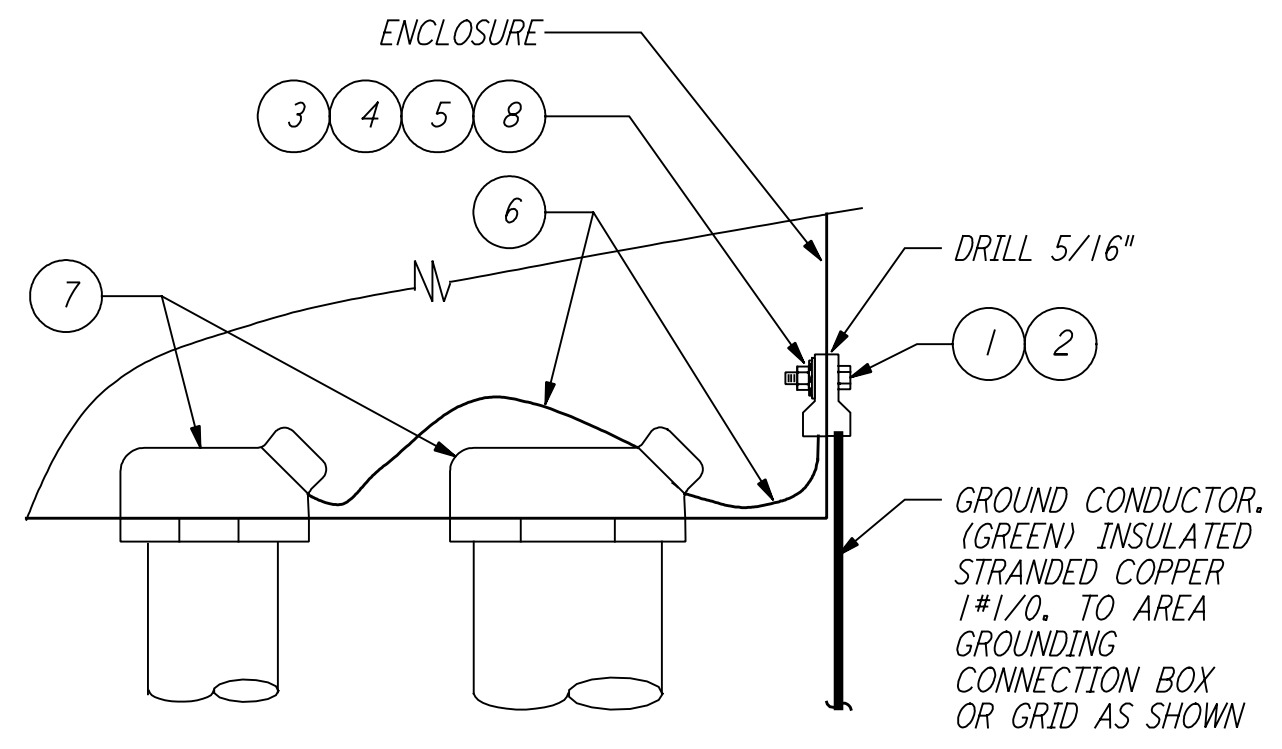
ELEVATION

LIST OF MATERIAL

ITEM NO.	QTY	DESCRIPTION
1	1	CADWELD MOLD #HDVBC-2C
2	1	CARTRIDGE STANDARD POWDER 200 GRAMS

EXOTHERMIC WELD TO STRUCTURE

4 REF

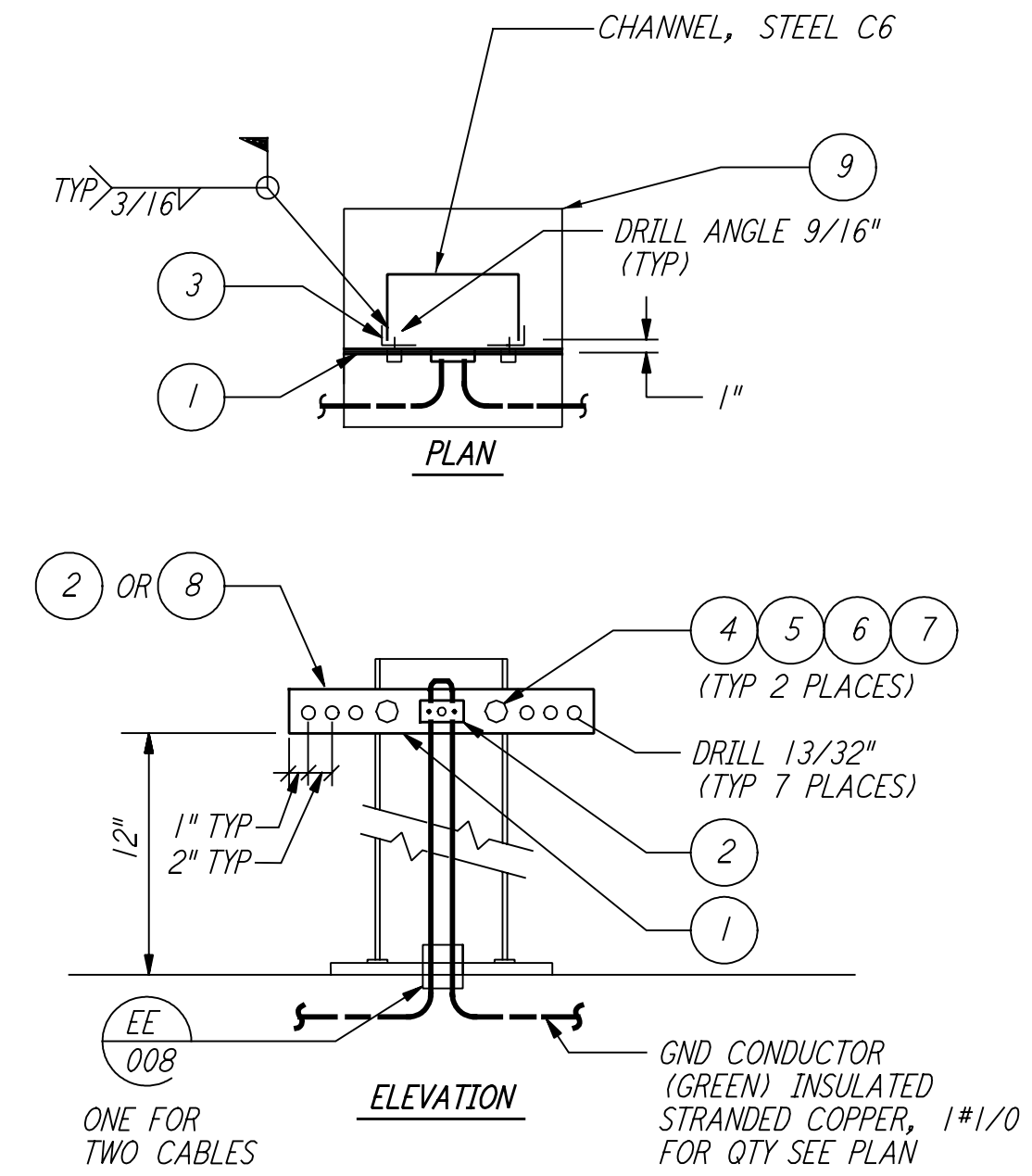


LIST OF MATERIAL

ITEM NO.	QTY	DESCRIPTION
1	1	LUG, #1/0-#2/0 WIRE X 1/4" BOLT, BURNDY TYPE QA26-B
2	1	BOLT, 1/4"-20 X 1 1/2" LG, HEX HD DURUM
3	1	NUT, 1/4"-20 HEX DURUM
4	1	FLAT WASHER, 1/4" RD DURUM
5	1	LOCKWASHER, 1/4" SPRING DURUM
6	AR	WIRE, #8 THW SOFT DRAWN (GREEN) INSULATED STRANDED CU
7	AR	GROUND HUB, MYERS SERIES STAG SIZE AS REQ'D
8	1	LUG, #8-#4 STR BURNDY TYPE QIRLUG QA4C-B

CABINET OR BOX GROUNDING

5 REF

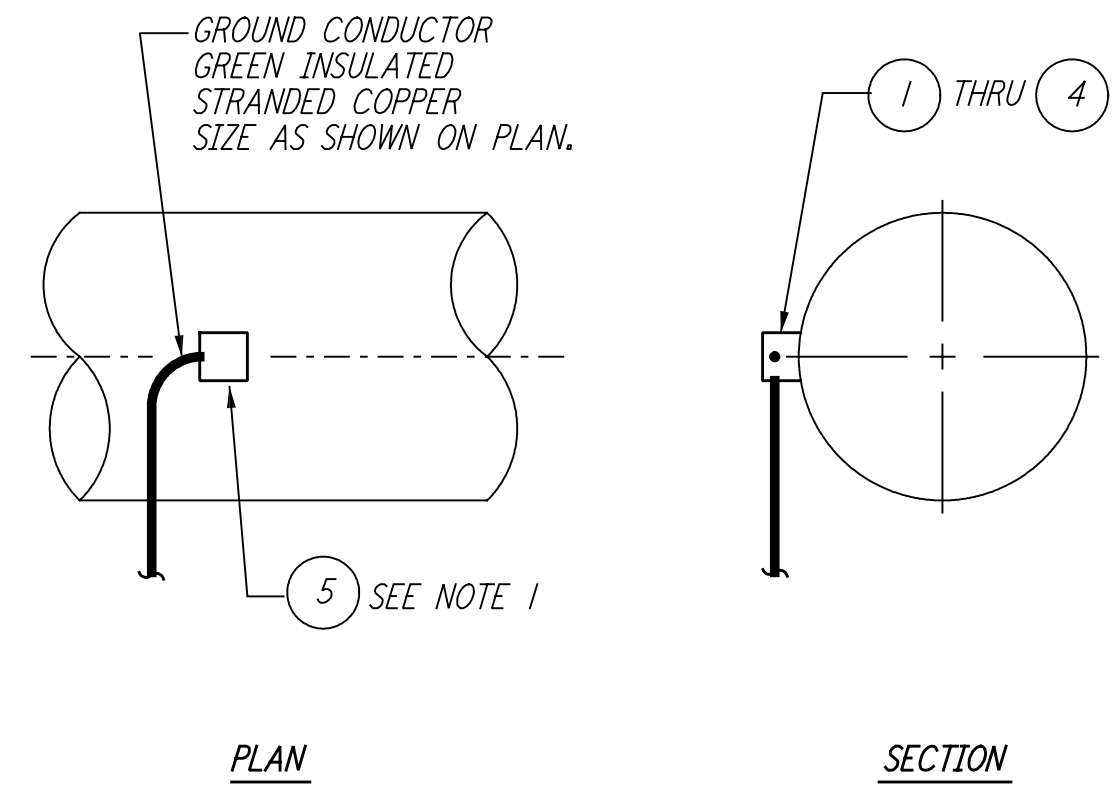


LIST OF MATERIAL

ITEM NO.	QTY	DESCRIPTION
1	1	COPPER BUS, 1/4" X 2" X 18" OR AS REQ'D.
2	AR	CONN. TWO #4-#2/0 WIRES-FLAT BAR, BURNDY TYPE GCM26
3	2	ANGLE, STEEL 4" X 2" X 1/4" X 2" LG
4	2	BOLT, 1/2"-13 X 1 1/2" LG HEX HD DURUM
5	2	NUT, 1/2"-13 HEX DURUM
6	2	LOCKWASHER, 1/2" SPRING DURUM
7	2	MALLEABLE IRON SQUARE BEVEL WASHER 1/2"
8	AR	CONN. ONE #4-#2/0 WIRES-FLAT BAR, BURNDY TYPE GBM26
9	1	PLATE 1/4" X 8" X 8" GALVANIZED STEEL

GROUNDING CONNECTION PLATE

6 REF



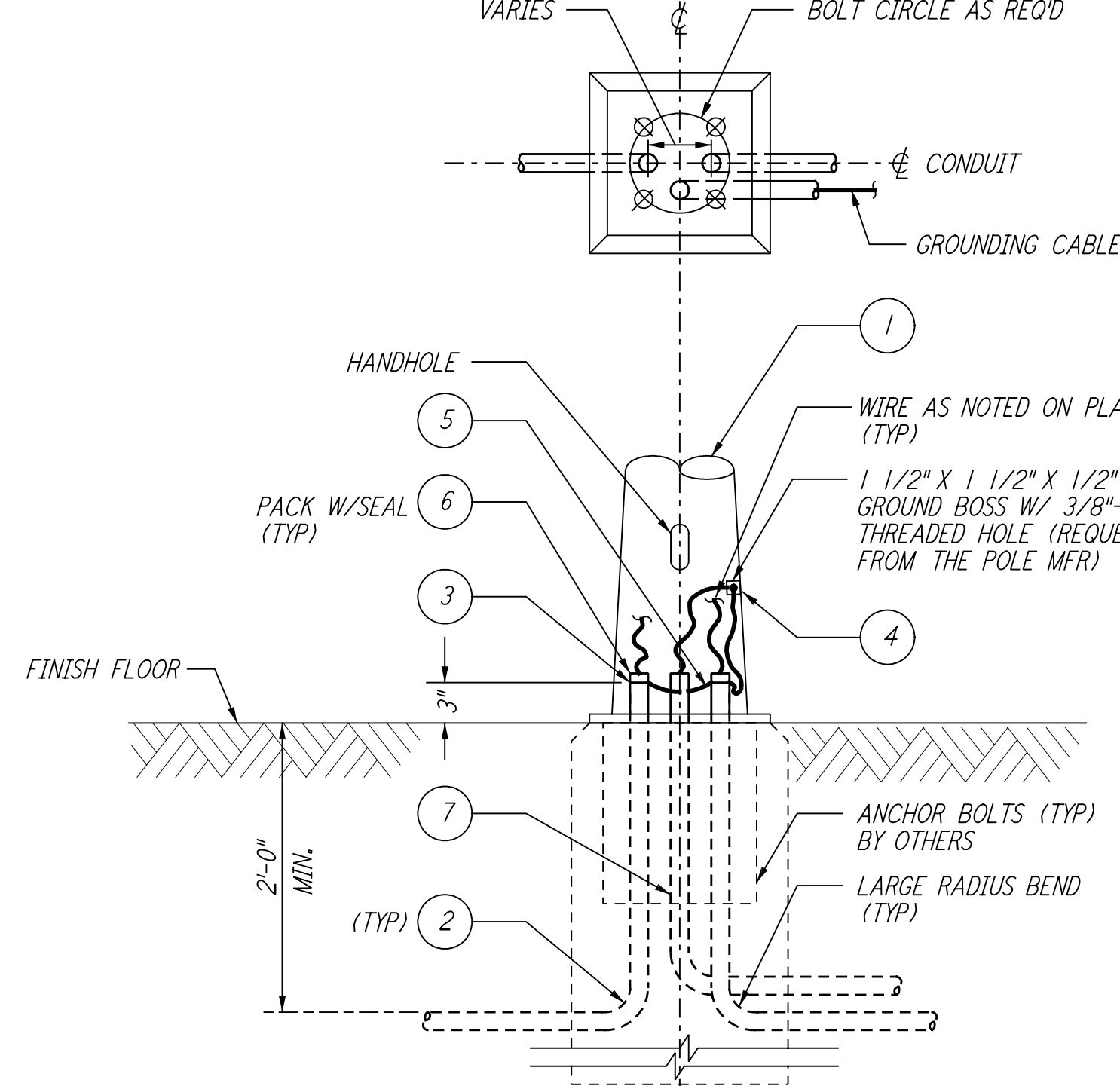
NOTE:
 1. PROTECTIVE COATING ON PIPE SHALL BE RESTORED BY FIELD.

LIST OF MATERIAL

ITEM NO.	QTY	DESCRIPTION
1	AR	MOLD HORIZ #2/0-4" MAX. PIPE, CADWELD HAH-2G-350C
2	1	CARTRIDGE STANDARD POWDER 90 GRAMS
3	AR	MOLD HORIZ #2/0-10" MAX. PIPE, CADWELD HAH-2G-BC
4	1	CARTRIDGE STANDARD POWDER 90 GRAMS
5	1	COLD GALVANIZE-TUBE, #2RC OR BITUMASTIC

GROUNDING CONNECTION TO HORIZONTAL STEEL WATER PIPE

7 REF



LIST OF MATERIAL

ITEM NO.	QTY	DESCRIPTION
1	1	LIGHTING POLE - AS SPECIFIED
2	AR	CONDUIT, RIGID
3	2	CONDUIT GND BUSHING, #8 WIRE, O.Z. TYPE ABLG
4	1	GND CONN SERVIT POST, BURNDY TYPE K2C23B1
5	3	WIRE, #8 STRANDED CU THW GREEN
6	AR	SEALING COMPOUND, 3M BRAND CP25N/S
7	AR	SCHEDULE 40 PVC 1 1/4" DIA CONDUIT

LIGHTING STANDARD BASE ASSEMBLY

8 REF

REV	NO.	DATE	BY	CHKD	ENGR	PROJ	DESCRIPTION
1	6-15-98	J. G.					ISSUED FOR AS-BUILT

AS-BUILT DRAWINGS

ISSUED FOR CONSTRUCTION

NO.	DATE	BY	CHKD	ENGR	PROJ
1	6-25-96	M. M.			
2	7-3-96	J. K.			
3	7-3-96	K. R.			
4	7-8-96	M. D. W.			

PARSONS
 100 WEST WALNUT STREET
 PASADENA, CALIFORNIA

LIGO
 CALIFORNIA INSTITUTE OF TECHNOLOGY
 MASSACHUSETTS INSTITUTE OF TECHNOLOGY

LASER INTERFEROMETER
 GRAVITATIONAL-WAVE OBSERVATORY
 SITE NO. 1 - HANFORD, WASHINGTON

ELECTRICAL GROUNDING DETAILS
 SHEET 2

SCALE: NONE
 SHEET NUMBER: PPI50969
 PROJECT NUMBER: 8094

WA-E-406

This document and the design it covers are the property of PARSONS. They are loaned only with the borrower's expressed written agreement that they will not be reproduced, copied, loaned, exhibited, or used in any other way, except by written consent from PARSONS to the borrower.

This document and the design it covers are the property of PARSONS. They are loaned only with the borrower's expressed written agreement that they will not be reproduced, copied, loaned, exhibited, or used in any other way, except by written consent from PARSONS to the borrower.

The user of this drawing is advised that the design is preliminary and subject to change without notice.