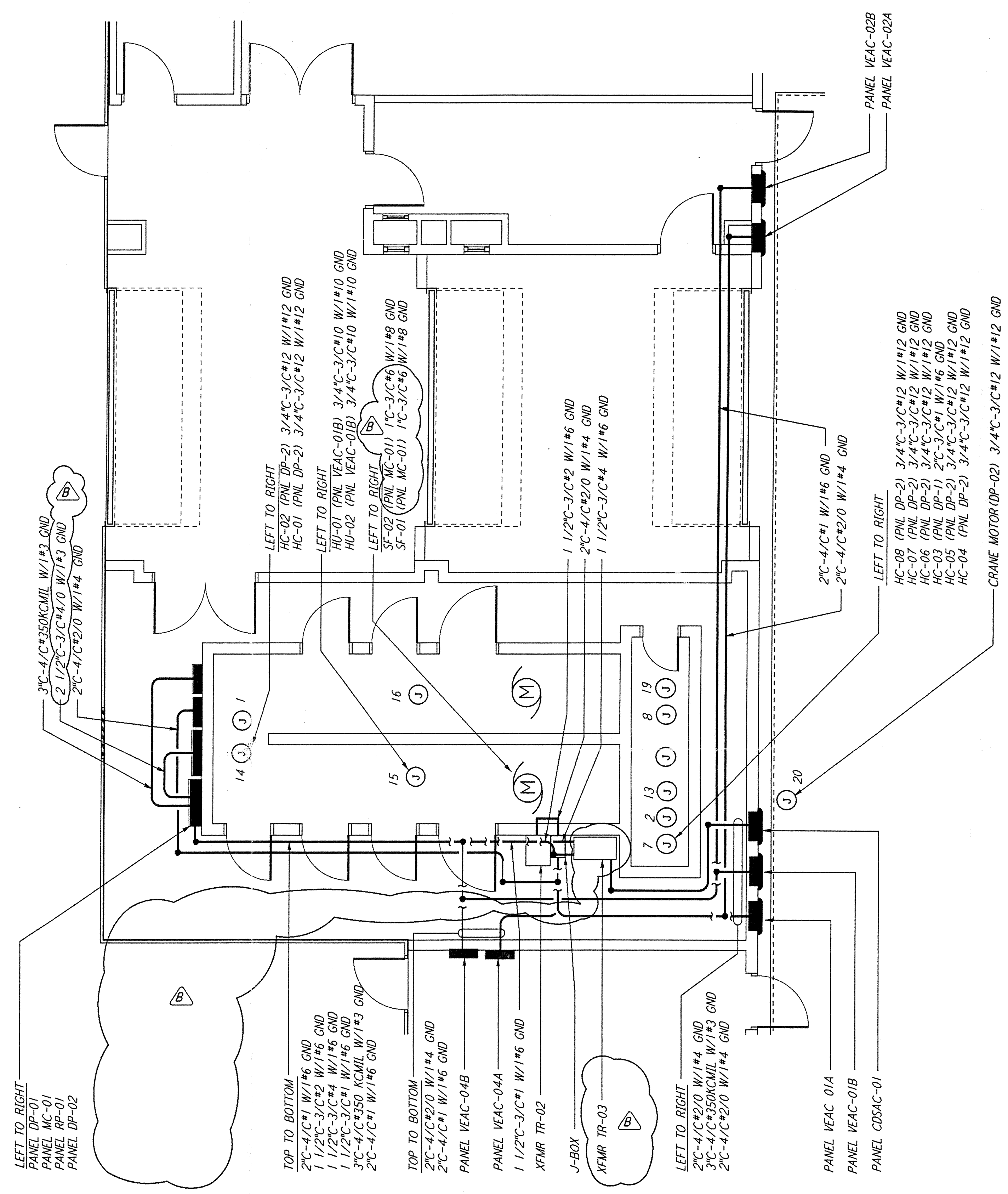
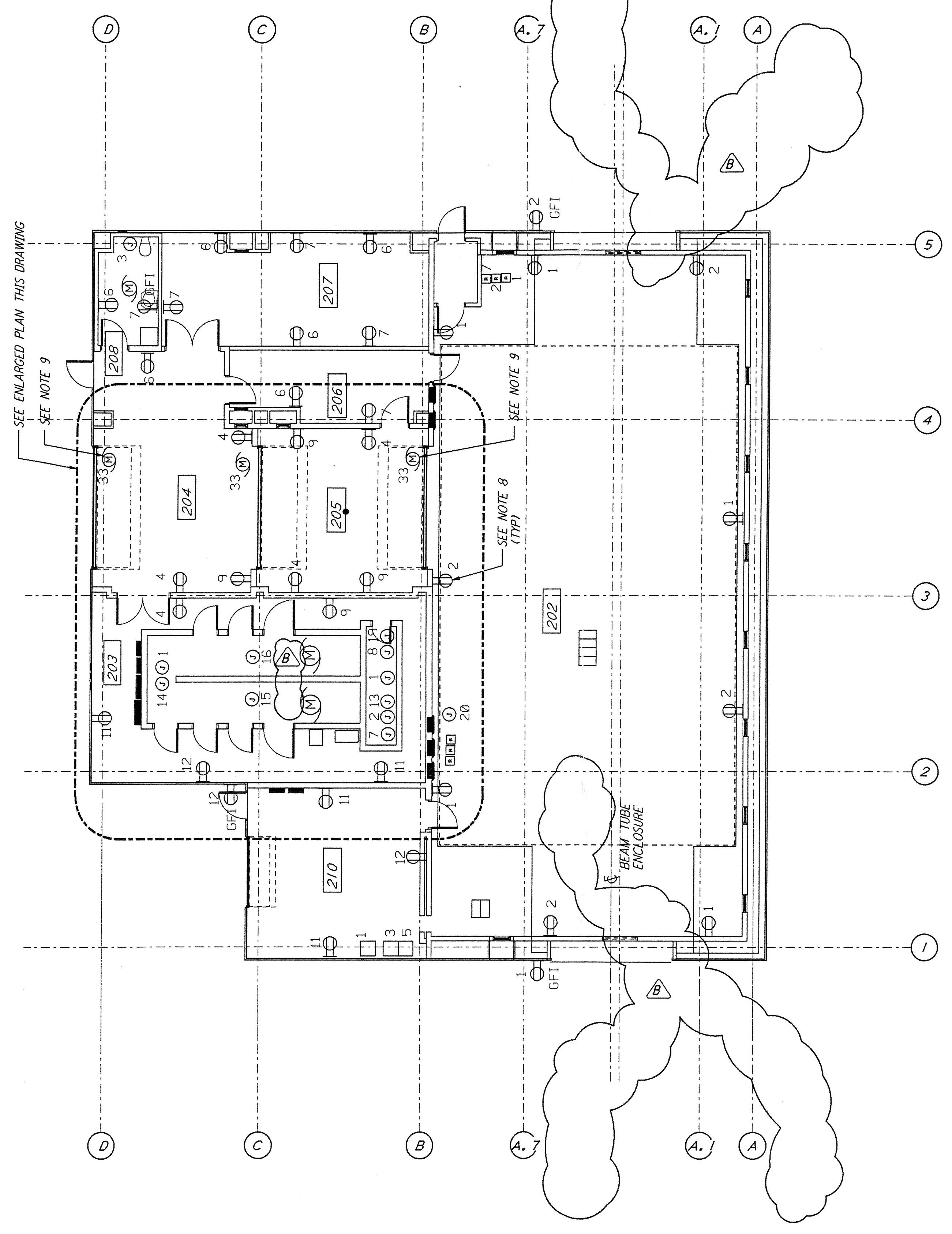


not be reproduced, copied, loaned, exhibited, or used in any other way, except by written consent from PARSONS to the borrower.

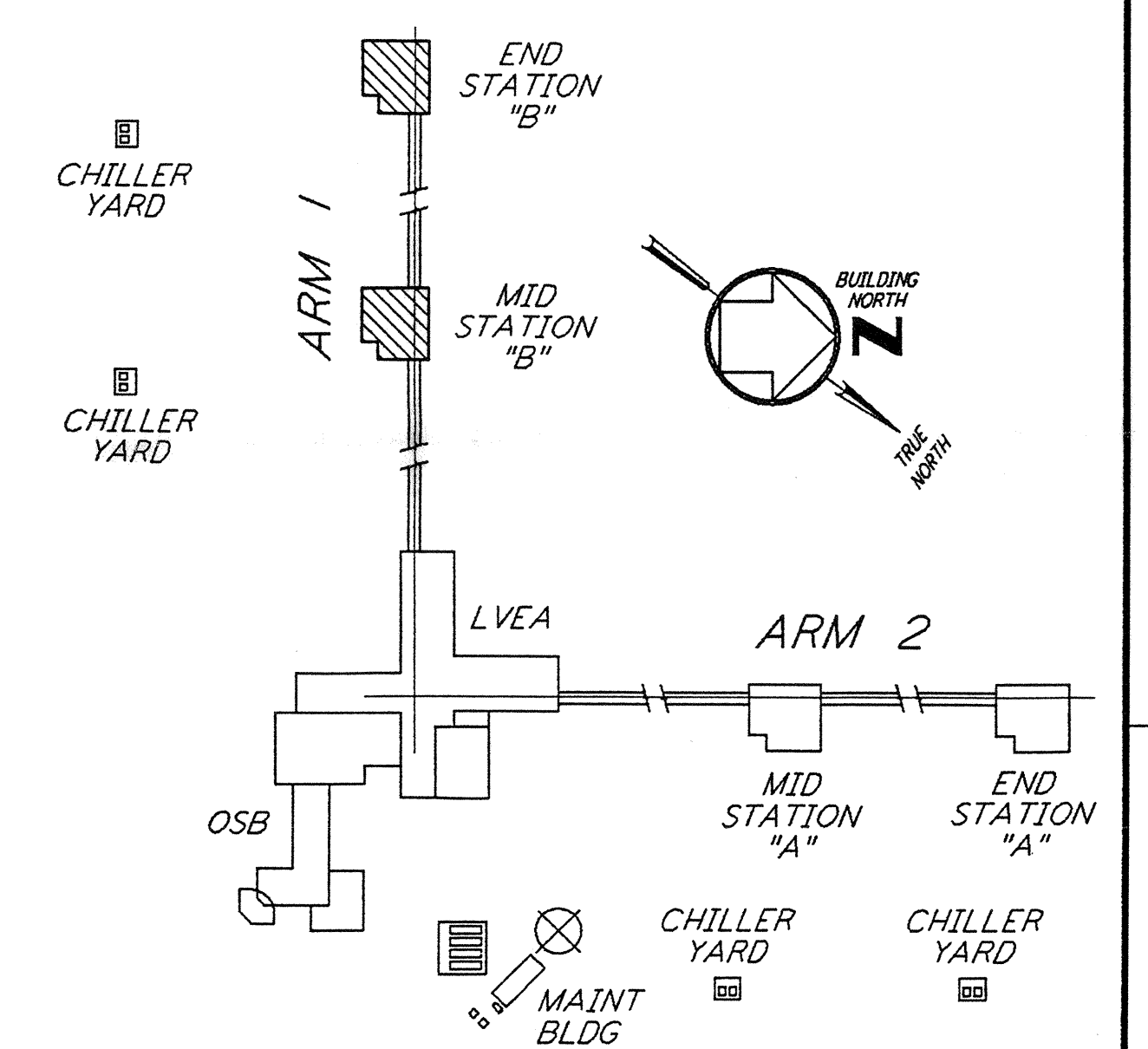
This document and the design it covers are the property of PARSONS. They are loaned only with the borrower's expressed written agreement that they will



**ENLARGED PLAN**  
 1/4" = 1'-0"

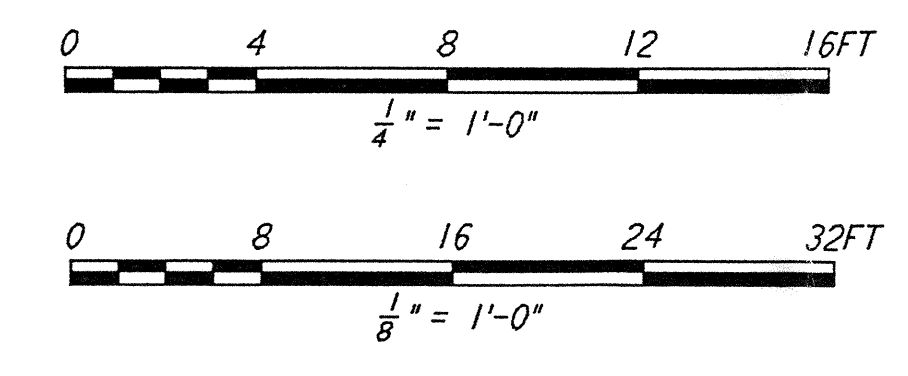
**GENERAL NOTES:**

1. FOR STANDARD SYMBOLS, ABBREVIATIONS AND ACRONYMS SEE DWG. WA-E-001.
2. FOR ELECTRICAL SYMBOLS SEE DWG. WA-E-002.
3. FOR STANDARD INSTALLATION DETAILS SEE DWG. WA-E-404 AND WA-E-409.
4. FOR CABLE TYPE DESCRIPTION SEE DWG. WA-E-007.
5. ALL RUNS ARE SHOWN DIAGRAMMATICALLY ONLY. CONTRACTOR SHALL COORDINATE INSTALLATION WITH OTHER DISCIPLINES.
6. FOR SINGLE LINE DIAGRAM, SEE DWG. WA-E-008.
7. FOR EQUIPMENT LOCATION, SEE HVAC DWG. WA-H-211.
8. ALL CIRCUITS SHOWN ON THIS DRAWING ARE FROM PANEL RPO1 UNLESS OTHERWISE NOTED.
9. CIRCUIT SHOWN FEEDING THESE ITEMS ARE FROM DP-02.
10. PANEL SCHEDULES ARE SHOWN ON DRAWINGS WA-E-205 AND WA-E-206.



**KEY PLAN**

LIGO-D960420-B-0



| NO. | DATE    | BY  | CHKD | ENGR | PROJ | DESCRIPTION               |
|-----|---------|-----|------|------|------|---------------------------|
| B   | 5-22-96 | RAE | HW   | YCS  | TDM  | BID ADDENDUM #2           |
| A   | 4-19-96 | RAE | HW   | YCS  | TDM  | FINAL DESIGN REVIEW & BID |

|          |       |
|----------|-------|
| DRAWN    | M. M. |
| CHECKED  |       |
| ENGINEER |       |
| PROJ     |       |

**PARSONS**  
 100 WEST WALNUT STREET  
 PASADENA, CALIFORNIA

**LIGO**  
 CALIFORNIA INSTITUTE OF TECHNOLOGY  
 MASSACHUSETTS INSTITUTE OF TECHNOLOGY

LASER INTERFEROMETER  
 GRAVITATIONAL-WAVE OBSERVATORY  
 SITE NO. 1 - HANFORD, WASHINGTON

|  |          |                 |                |
|--|----------|-----------------|----------------|
| TITLE  | SCALE    | CONTRACT NUMBER | PROJECT NUMBER |
| ELECTRICAL<br>MID & END B STATIONS<br>ABOVEGROUND POWER PLAN | AS NOTED | PP150969        | 8094           |
| SHEET NUMBER   |          | REVISIONS       |                |
| <b>WA-E-214</b>  |          | A               |                |