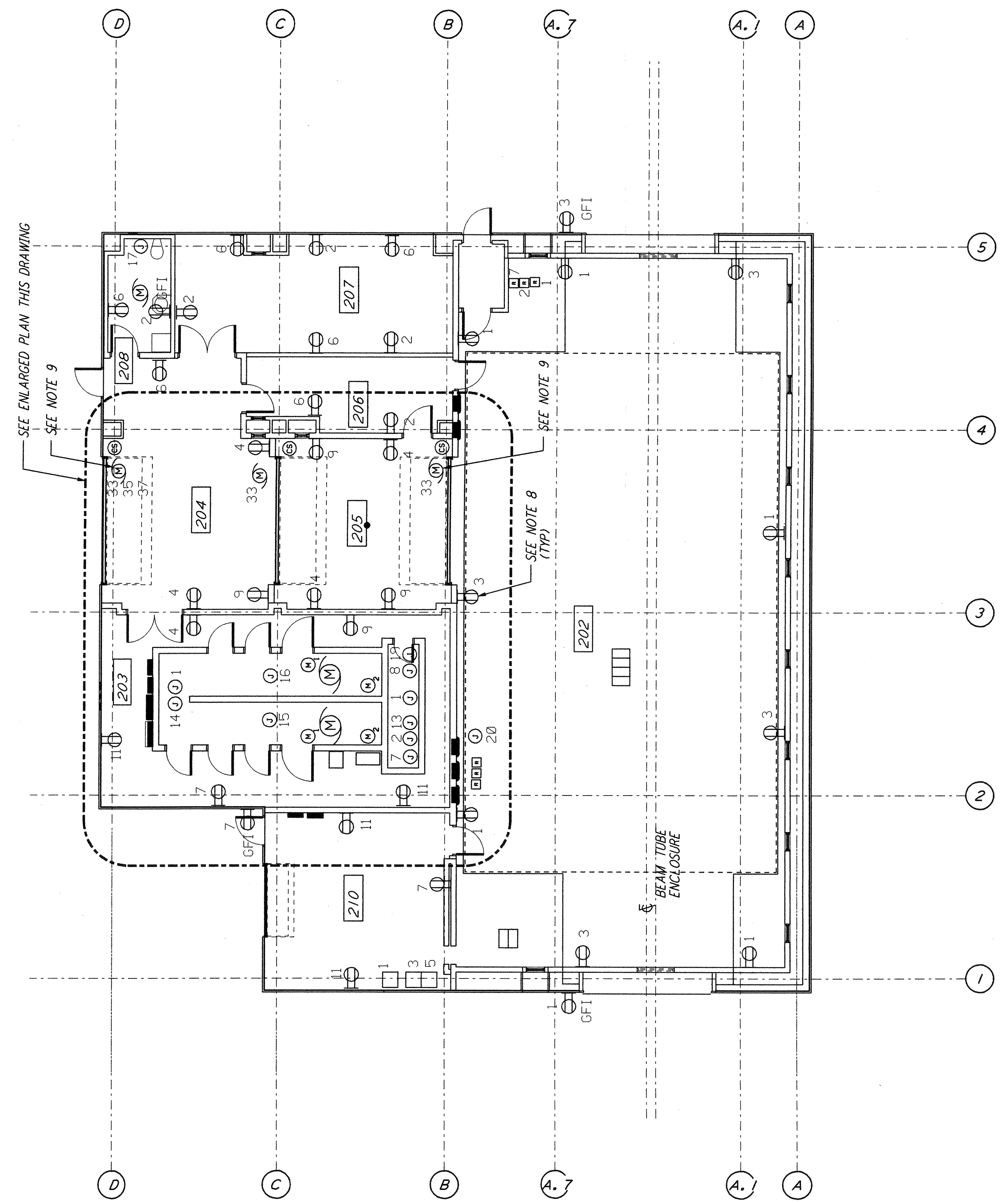


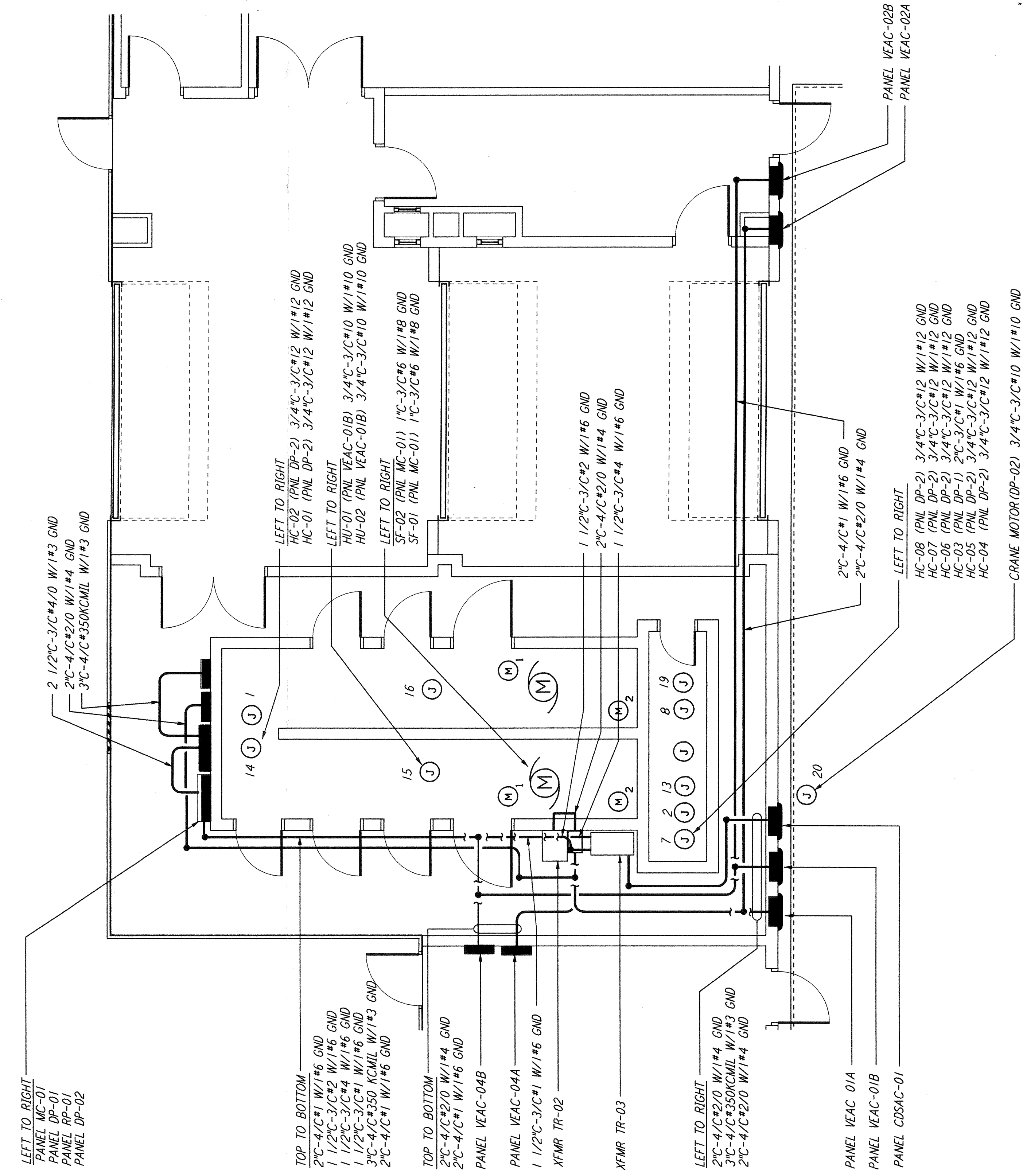
- GENERAL NOTES:**
- FOR STANDARD SYMBOLS, ABBREVIATIONS AND ACRONYMS SEE DWG. WA-E-001.
 - FOR ELECTRICAL SYMBOLS SEE DWG. WA-E-002.
 - FOR STANDARD INSTALLATION DETAILS SEE DWG. WA-E-404 AND WA-E-409.
 - FOR CABLE TYPE DESCRIPTION SEE DWG. WA-E-007.
 - ALL RUNS ARE SHOWN DIAGRAMMATICALLY ONLY, CONTRACTOR SHALL COORDINATE INSTALLATION WITH OTHER DISCIPLINES.
 - FOR SINGLE LINE DIAGRAM, SEE DWG. WA-E-008.
 - FOR EQUIPMENT LOCATION, SEE HVAC DWG. WA-H-211.
 - ALL CIRCUITS SHOWN ON THIS DRAWING ARE FROM PANEL RPO1 UNLESS OTHERWISE NOTED.
 - CIRCUIT SHOWN FEEDING THESE ITEMS ARE FROM DP-02.
 - PANEL SCHEDULES ARE SHOWN ON DRAWINGS WA-E-205 AND WA-E-206.

- (M)₁ VANE ACTUATOR
- (M)₂ SHUTTER MOTOR

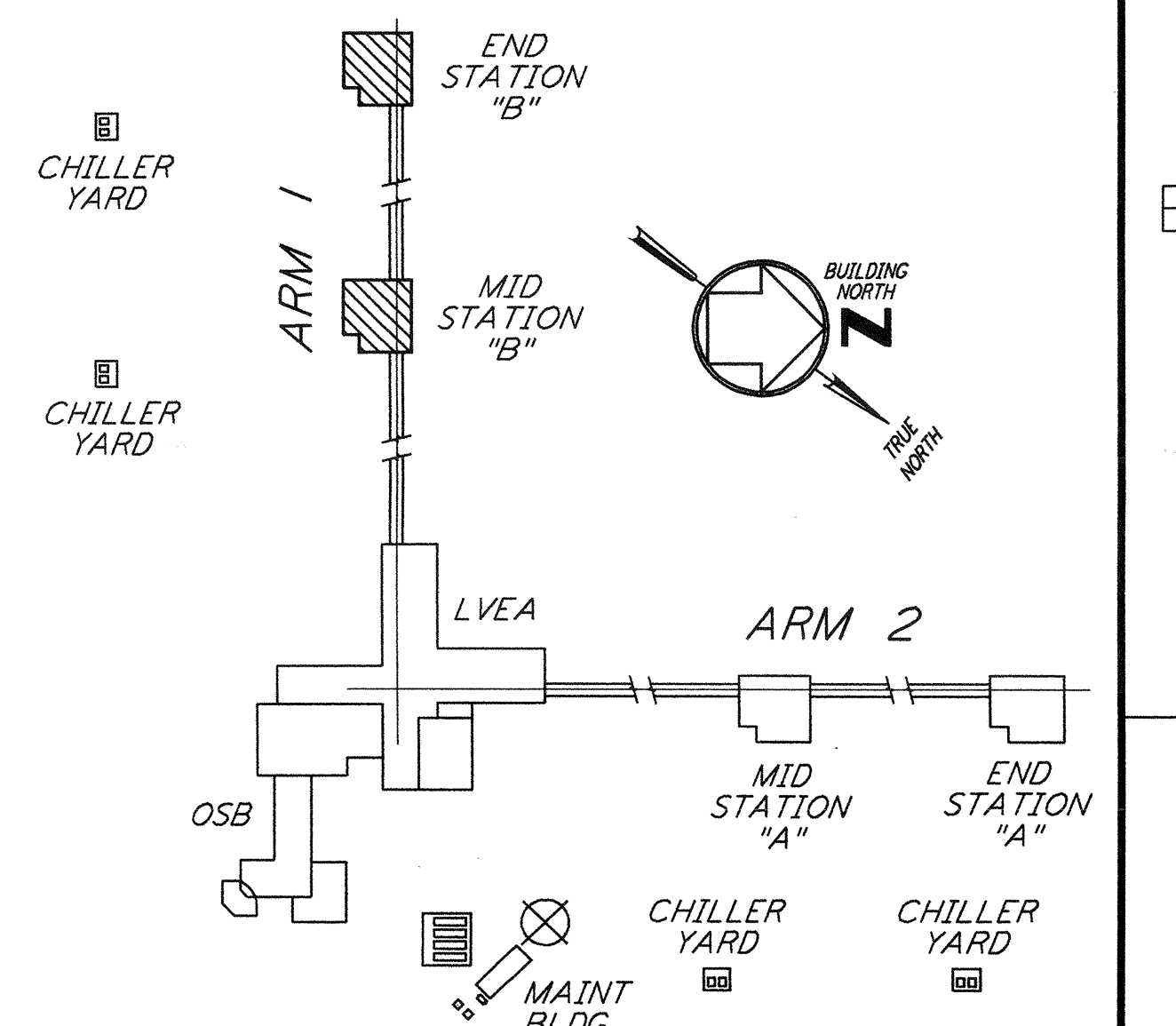
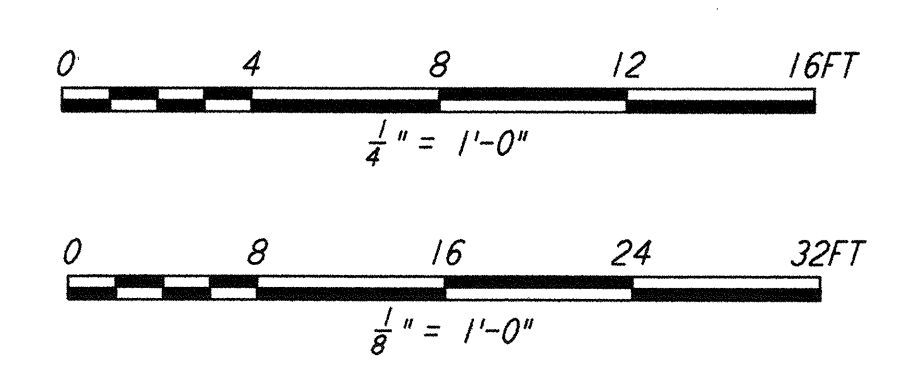
This document and the design it covers are the property of PARSONS. They are loaned only with the borrower's expressed written agreement that they will not be reproduced, copied, loaned, exhibited, or used in any other way, except by written consent from PARSONS to the borrower.



ROOMS 202 & 208 RECP. ARE 3'-6" ABOVE FINISHED FLOOR (ALL OTHERS ARE 1'-6")
 LIGHTING PANEL IS 6'-6" TO TOP OF CIRCUIT BREAKERS
 LIGHTING SWITCHES ARE 4'-0" TO CENTERLINE OF BOX



ENLARGED PLAN
 1/4" = 1'-0"



KEY PLAN
LIGO-D960420-02-0

NO.	DATE	BY	CHKD	ENGR	PROJ	DESCRIPTION
2	6-15-98	J.G.	K.R.	K.R.	TDM	ISSUED FOR AS-BUILT GENERAL REVISIONS
1	3-21-97	J.G.	K.R.	K.R.	TDM	ISSUED FOR CONSTRUCTION

NO.	DATE	BY	CHKD	ENGR	PROJ	DESCRIPTION
1	6-25-96	M.M.				ISSUED FOR CONSTRUCTION
2	7-3-96	J.K.				CHECKED
3	7-3-96	K.R.				ENGINEER
4	7-8-96	M.D.W.				PROJ

PARSONS
 100 WEST WALNUT STREET
 PASADENA, CALIFORNIA

LIGO
 CALIFORNIA INSTITUTE OF TECHNOLOGY
 MASSACHUSETTS INSTITUTE OF TECHNOLOGY

**LASER INTERFEROMETER
 GRAVITATIONAL-WAVE OBSERVATORY
 SITE NO. 1 - HANFORD, WASHINGTON**

**ELECTRICAL
 MID & END B STATIONS
 ABOVEGROUND POWER PLAN**

AS NOTED PP150969 8094
WA-E-214