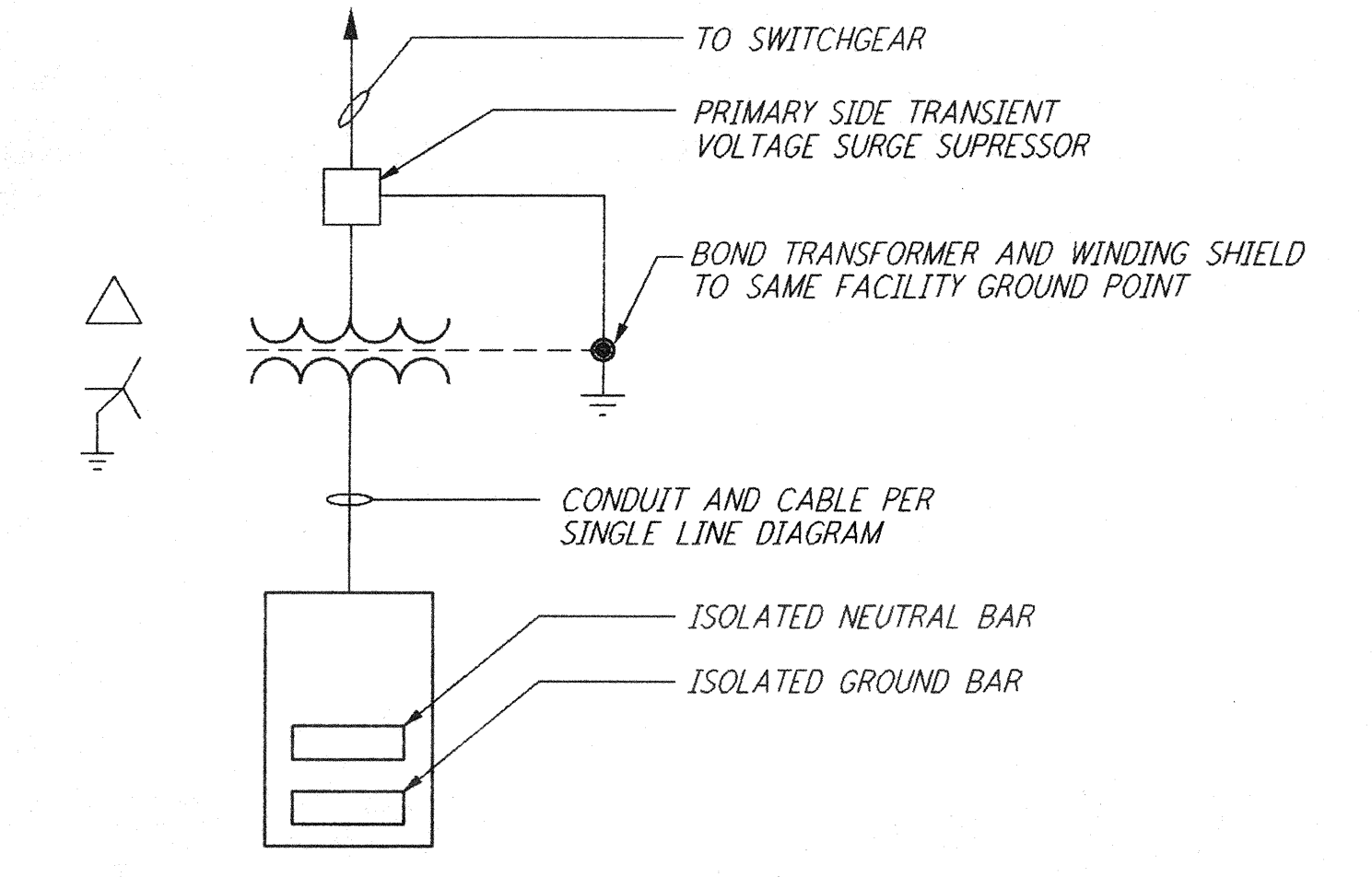
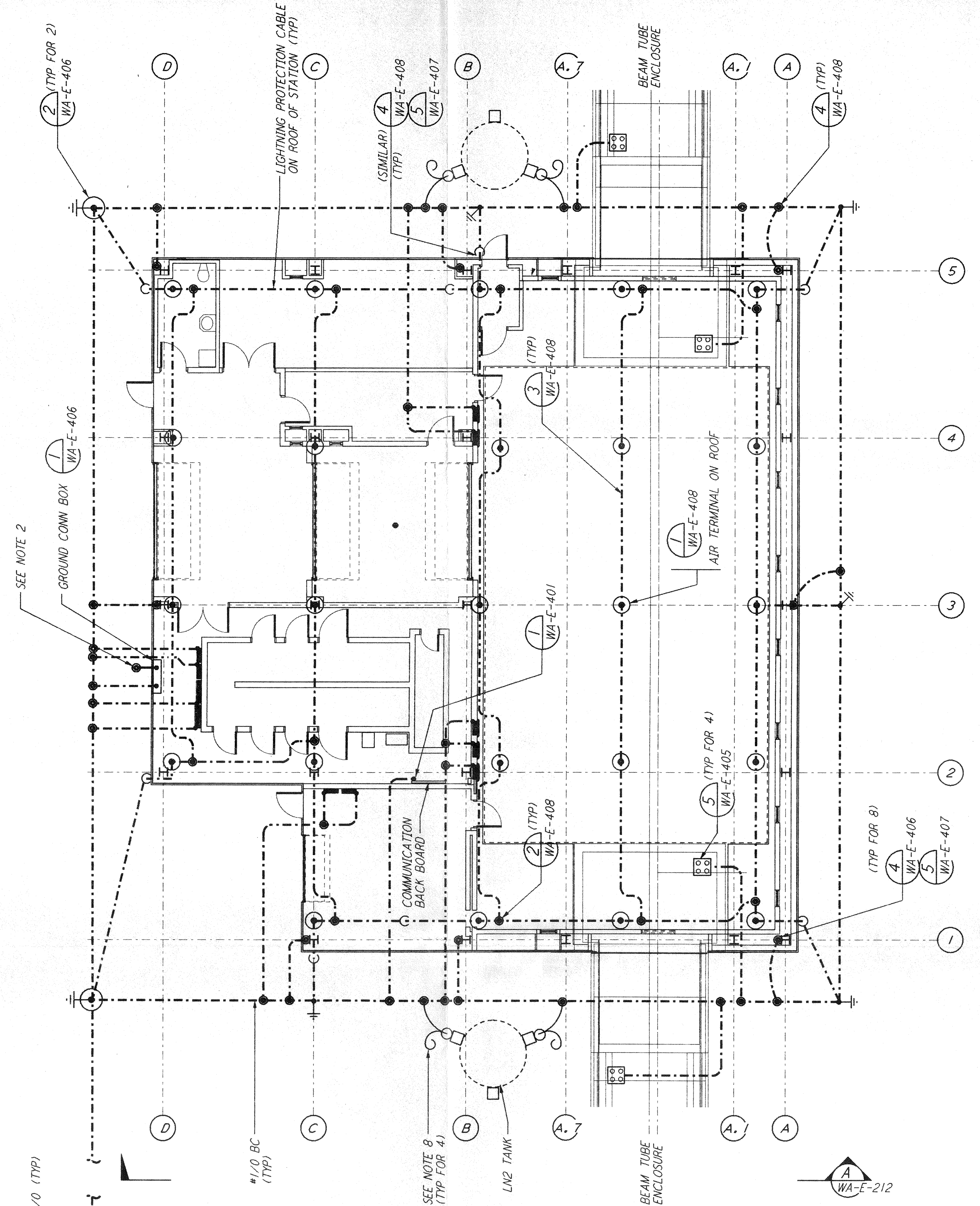
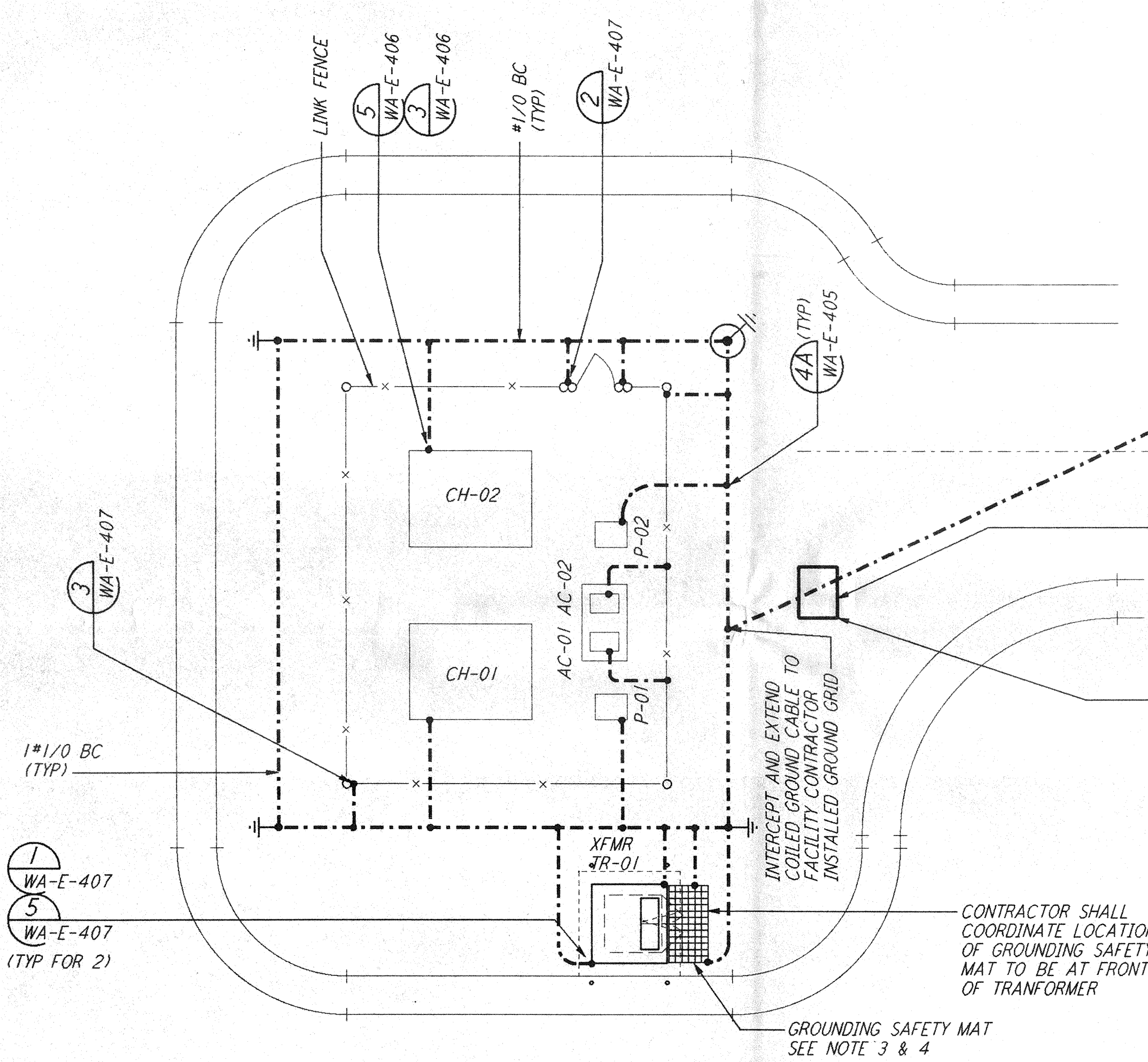


**NOTES:**

1. FOR GENERAL NOTES SEE DWG. WA-E-103.
2. CONNECT GROUNDING CONDUCTOR TO REBAR AT BOTTOM OF FOUNDATION. REBAR SHALL BE AT LEAST 20 FEET LONG AND 1/2" DIAMETER.
3. GROUNDING MAT FOR PERSONNEL PROTECTION SHALL BE A PREFABRICATED 4'-0" X 6'-0" MAT WITH A 6" X 6" GRID, 40% CONDUCTIVITY COPPERWELD, WITH CENTER WIRE # 1/0 AWG, ERICO MFR. CABLE TO MESH TYPE PT, MOLD PTC-1G2C, WELD METAL #65.
4. GROUNDING MAT SHALL BE INSTALLED 12" DEEP MIN. ADJACENT TO HIGH VOLTAGE PRIMARY SIDE.
5. SEE CIVIL DRAWING WA-C-021 FOR ACTUAL LOCATION OF CHILLERS, PUMPS AND TRANSFORMER.
6. SEE SPECIFICATION SECTION 16670 FOR LIGHTNING PROTECTION MATERIAL.
7. GROUND CONNECTION TO STRUCTURAL STEEL SHALL BE EXOTHERMIC WELD TYPE, AND APPROPRIATE FOR THE CABLE AND STRUCTURAL STEEL.
8. COIL AND TAPE GROUND CONDUCTOR AT TANK FOUNDATION, FOR FUTURE CONNECTION BY TANK VENDOR.



GROUNDING SCHEMATIC FOR CDSAC-01 PANEL

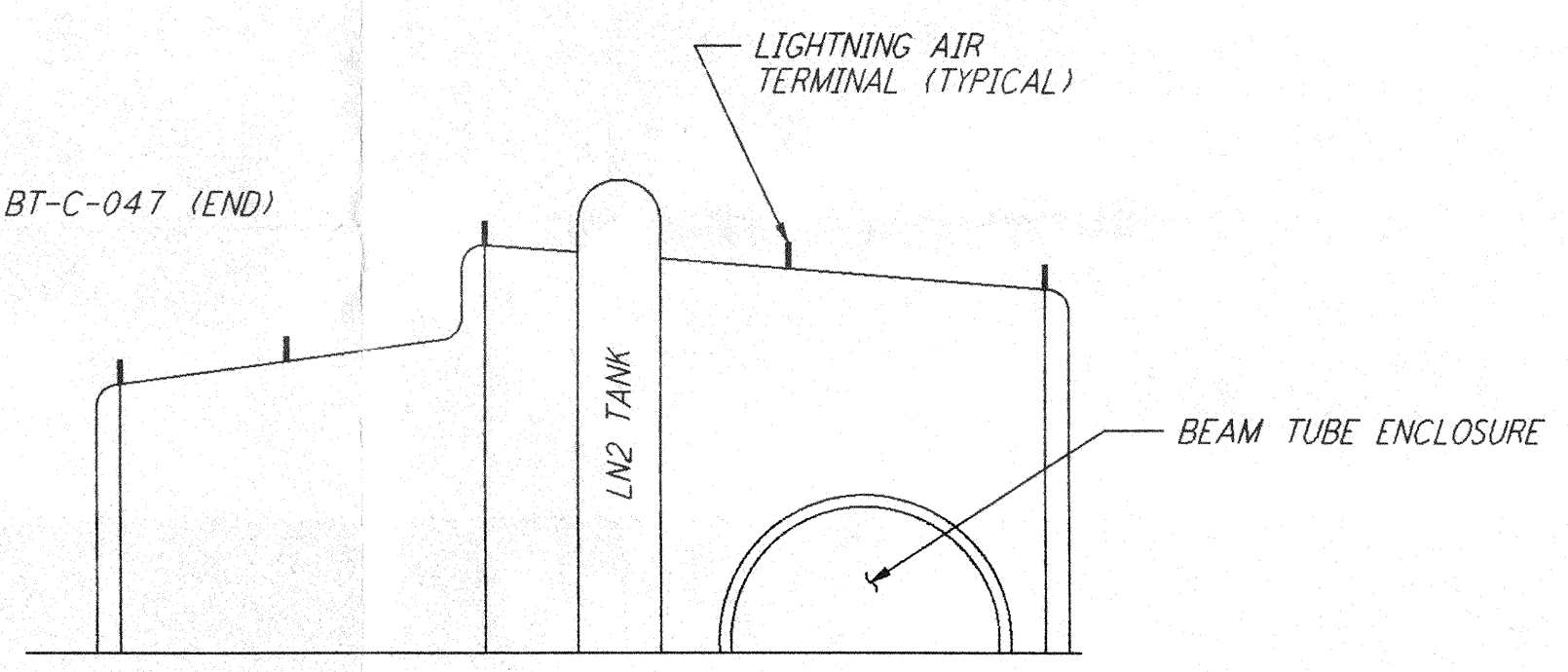


ELECTRICAL PULL BOX BROOKS-DEEP DUCT SERIES 1502DPB W/STYLE B TYPE 20 VEHICULAR TRAFFIC COVER TYPICAL FOR MID AND END STATIONS, FOR LOCATIONS SEE DRAWING BT-C-043 (MID), AND BT-C-047 (END)

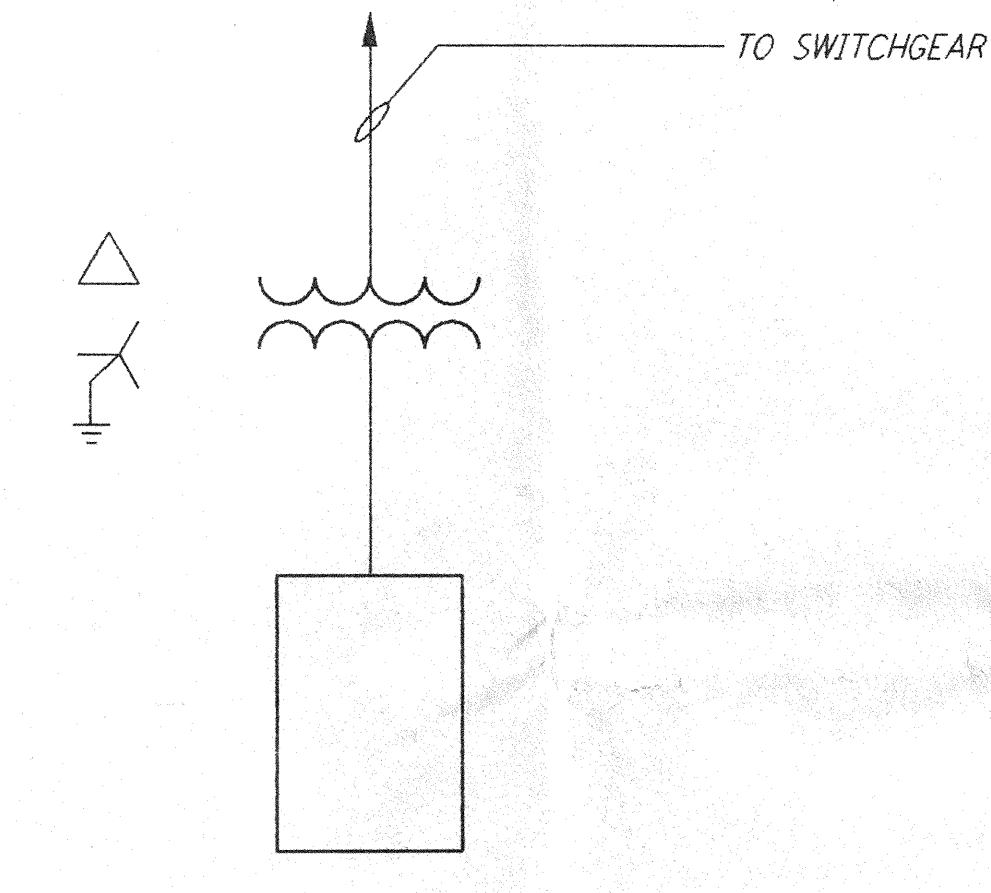
GROUND CABLE SHALL BE CONTINUOUS (UNSPLICED) THROUGH PULL BOX

CONTRACTOR SHALL COORDINATE LOCATION OF GROUNDING SAFETY MAT TO BE AT FRONT OF TRANSFORMER

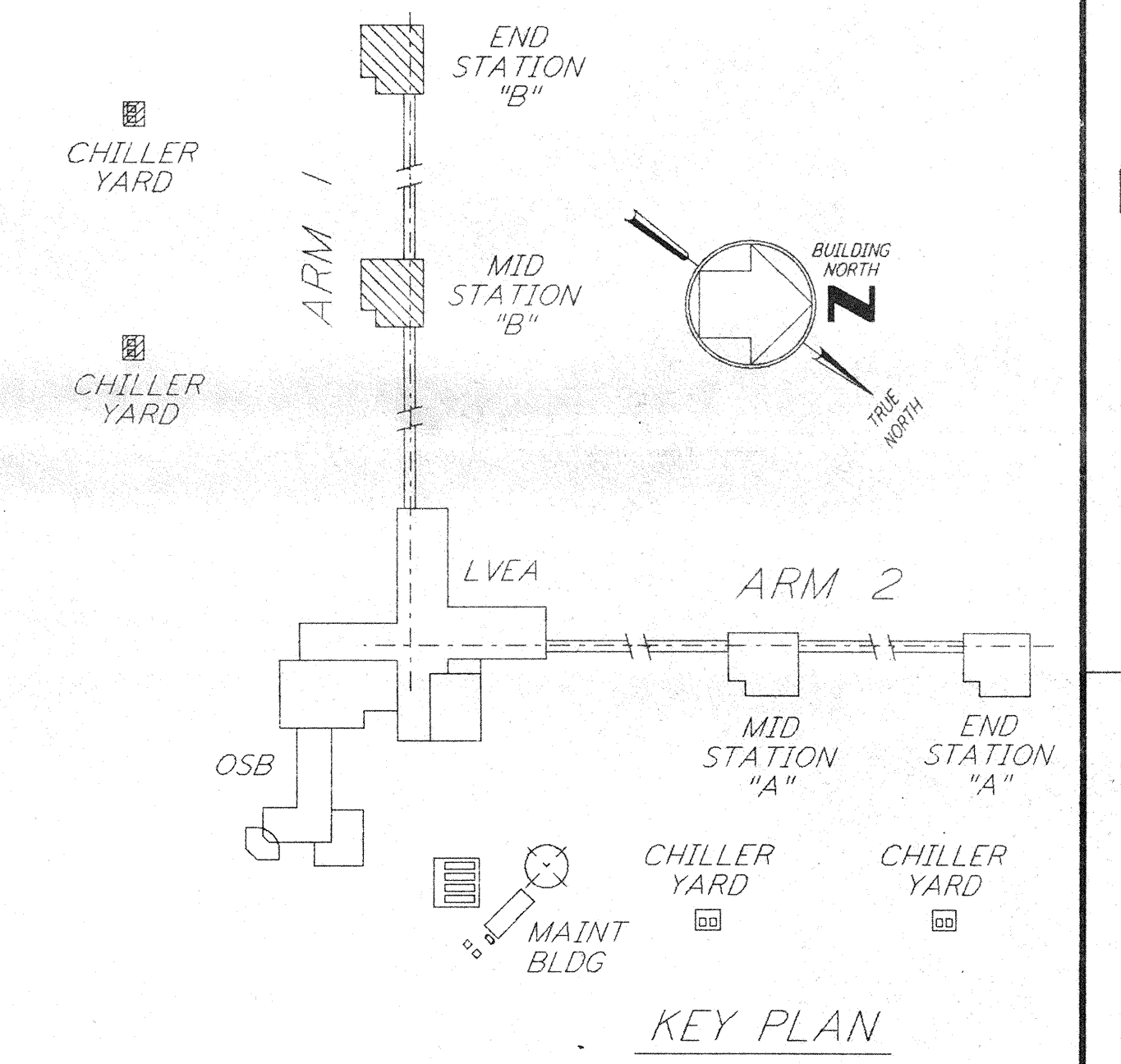
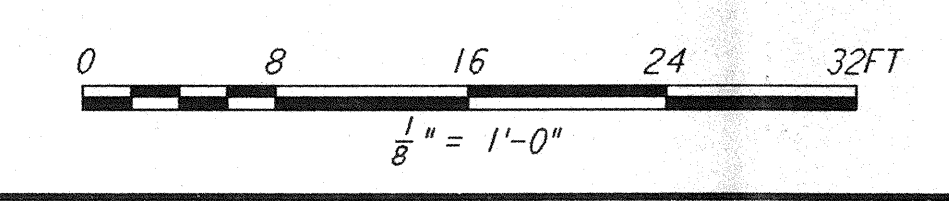
GROUNDING SAFETY MAT SEE NOTE 3 & 4



ELEVATION REF WA-E-212



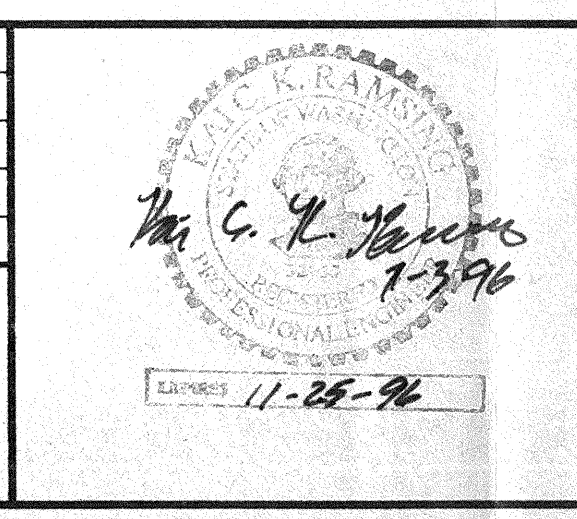
GROUNDING SCHEMATIC FOR RECEPTACLE PANEL RP-01



KEY PLAN

NO.	DATE	BY	CHKD	ENGR	PROJ	DESCRIPTION

ISSUED FOR CONSTRUCTION			
DRAWN	M. M.	6-25-96	
CHECKED		7-3-96	
ENGINEER		7-5-96	
PROJ		7/8/96	



**PARSONS**

100 WEST WALNUT STREET  
 PASADENA, CALIFORNIA

**LIGO**

CALIFORNIA INSTITUTE OF TECHNOLOGY  
 MASSACHUSETTS INSTITUTE OF TECHNOLOGY

LASER INTERFEROMETER  
 GRAVITATIONAL-WAVE OBSERVATORY  
 SITE NO. 1 - HANFORD, WASHINGTON

TITLE: **ELECTRICAL  
 MID & END B STATIONS  
 LIGHTNING & GROUNDING  
 PLAN**

AS NOTED PP150969 8094

SHEET NUMBER: **WA-E-212**

REVISIONS:

LIGO-D960418-00-0

This document and the design it covers are the property of PARSONS. They are loaned only with the borrower's expressed written agreement that they will not be reproduced, copied, loaned, exhibited, or used in any other way, except by written consent from PARSONS to the borrower.

This document and the design it covers are the property of PARSONS. They are loaned only with the borrower's expressed written agreement that they will not be reproduced, copied, loaned, exhibited, or used in any other way, except by written consent from PARSONS to the borrower.