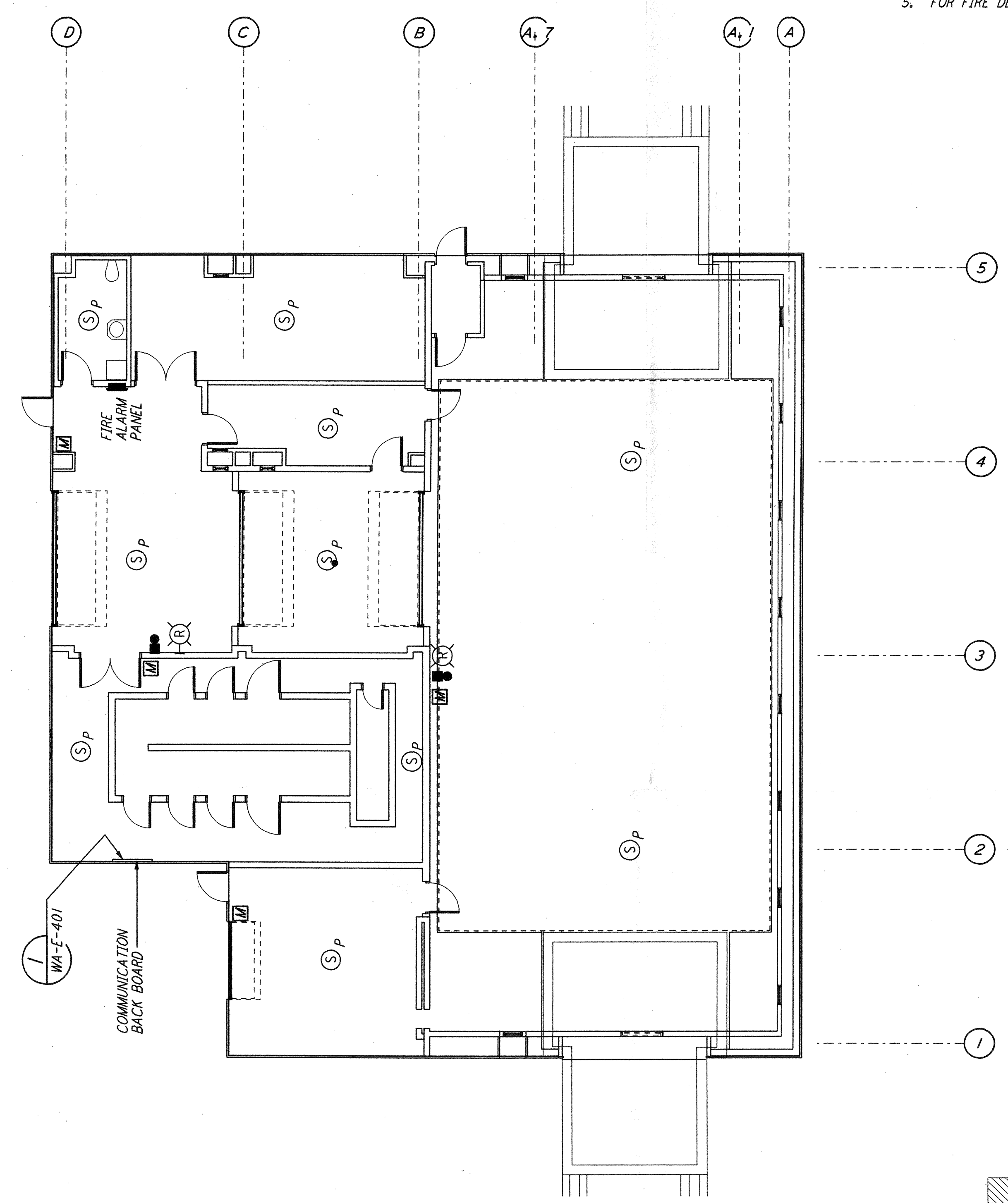


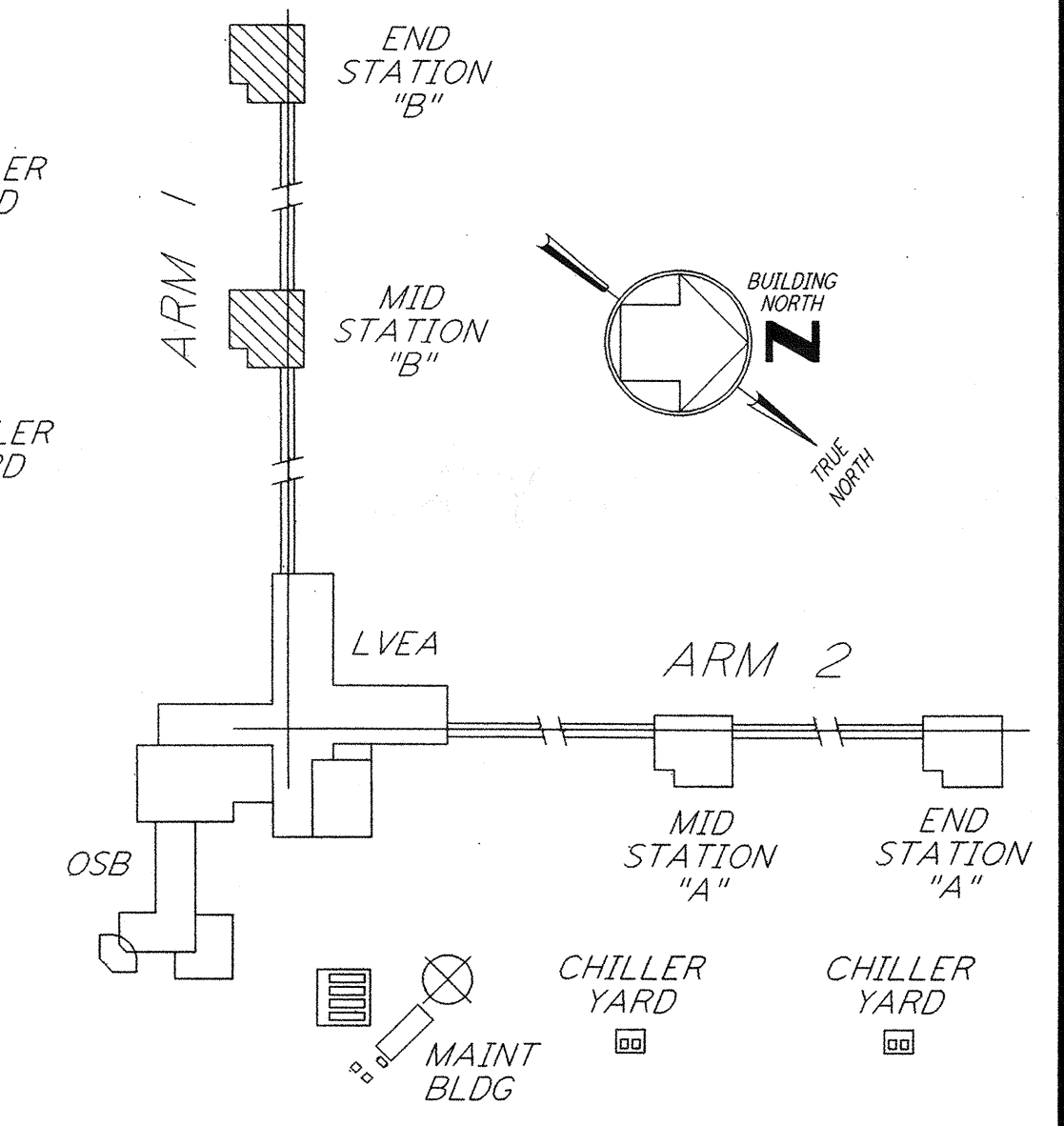
**LIGHTING PLAN**

LIGHTING SWITCHES SHALL BE 4'-0" FROM CENTER OF BOX.  
 EMERGENCY LIGHTING SHALL BE INDEPENDENT OF OTHER RACEWAY SYSTEMS.  
 LIGHTING ABOVE DOORS SHALL BE 1'-0" ABOVE DOOR OPENING TO BOTTOM OF FIXTURES.

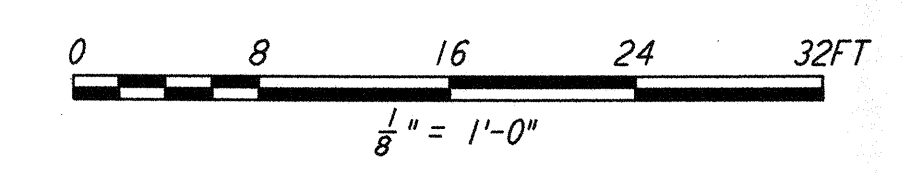


**COMMUNICATIONS AND FIRE DETECTION PLAN**

- NOTES:**
- FOR GENERAL NOTES SEE DRAWINGS WA-E-102.
  - ALL CIRCUITS SHOWN ON THIS DRAWING ARE FROM PANEL DP-02 UNLESS OTHERWISE NOTED.
  - FOR PANEL SCHEDULES SEE DRAWING WA-E-205 AND WA-E-206.
  - FOR FIXTURE LOCATION SEE ARCHITECTURAL REFLECTED CEILING PLAN ON DRAWING WA-A-221.
  - FOR FIRE DETECTION NOTES SEE DRAWING WA-E-110.



**KEY PLAN**  
**LIGO-D960417-02-O**



This document and the design it covers are the property of PARSONS. They are loaned only with the borrower's expressed written agreement that they will not be reproduced, copied, loaned, exhibited, or used in any other way, except by written consent from PARSONS to the borrower.

This document and the design it covers are the property of PARSONS. They are loaned only with the borrower's expressed written agreement that they will not be reproduced, copied, loaned, exhibited, or used in any other way, except by written consent from PARSONS to the borrower.

NO.	DATE	BY	CHKD	ENGR	PROJ	DESCRIPTION
2	6-15-98	J.G.				ISSUED FOR AS-BUILT
1	3-21-97	J.G.	K.R.	K.R.	TDM	GENERAL REVISIONS

ISSUED FOR CONSTRUCTION			
DRAWN	M.M.	6-25-96	
CHECKED	J.K.	7-3-96	
ENGINEER	K.R.	7-3-96	
PROJ	M.D.W.	7-8-96	

**AS-BUILT DRAWINGS**

100 WEST WALNUT STREET  
 PASADENA, CALIFORNIA

CALIFORNIA INSTITUTE OF TECHNOLOGY  
 MASSACHUSETTS INSTITUTE OF TECHNOLOGY

LASER INTERFEROMETER  
 GRAVITATIONAL-WAVE OBSERVATORY  
 SITE NO. 1 - HANFORD, WASHINGTON

TITLE	SCALE	CONTRACT NUMBER	PROJECT NUMBER
ELECTRICAL MID & END B STATIONS LIGHTING, COMMUNICATIONS & FIRE DETECTION PLAN	AS NOTED	PP150969	8094
SHEET NUMBER		REVISIONS	
<b>WA-E-211</b>		2	

Thu Jul 09 13:28:59 1998 CAPLOT\NUE\AS3-V36B2.DCF 52085 K:\V36B2\ae211a.drf L100WAF3.BDR