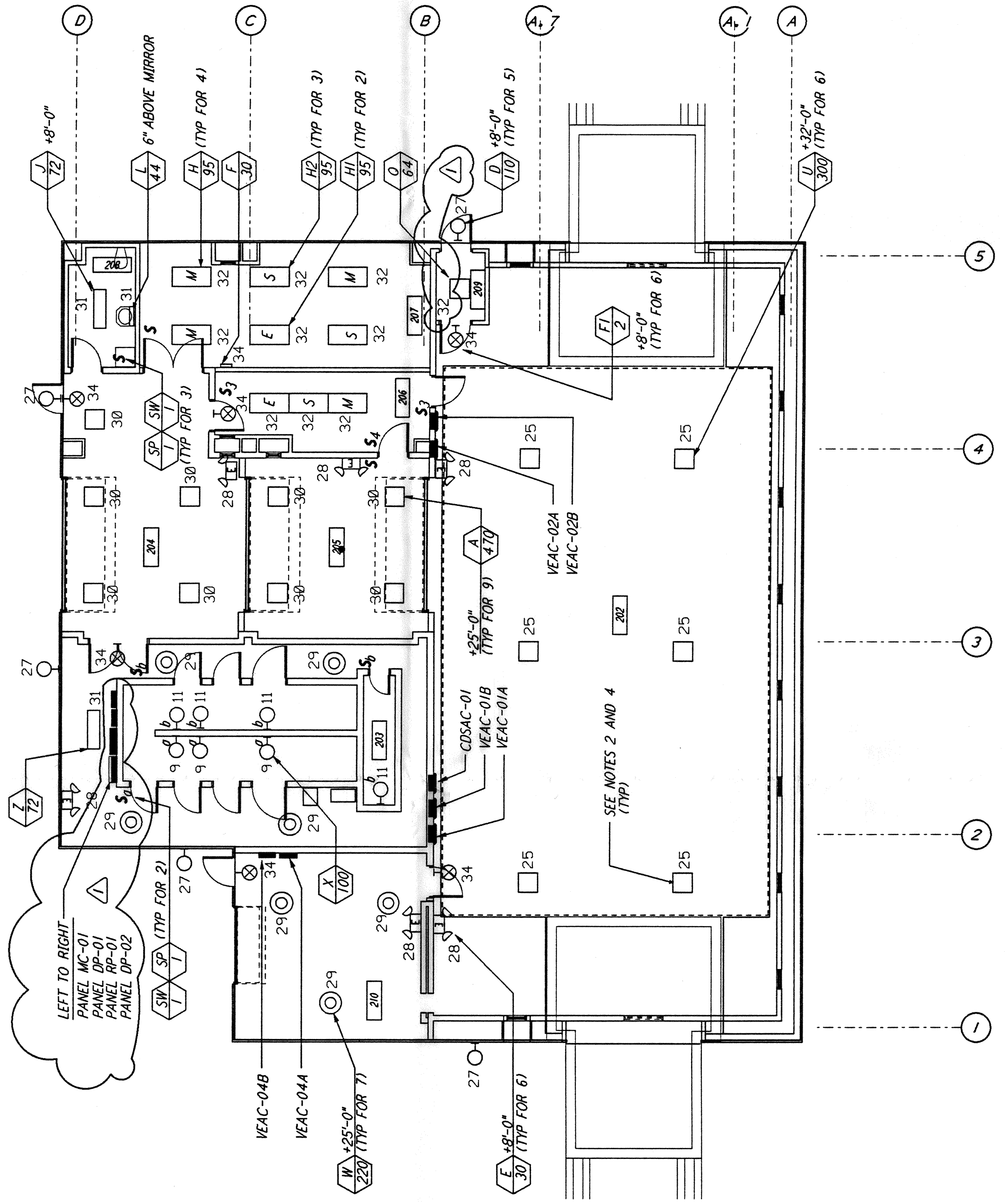
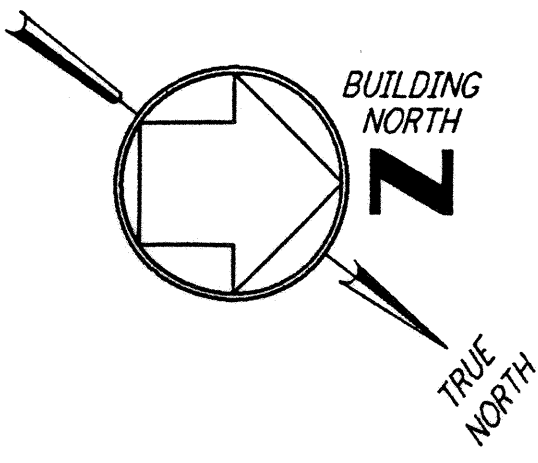
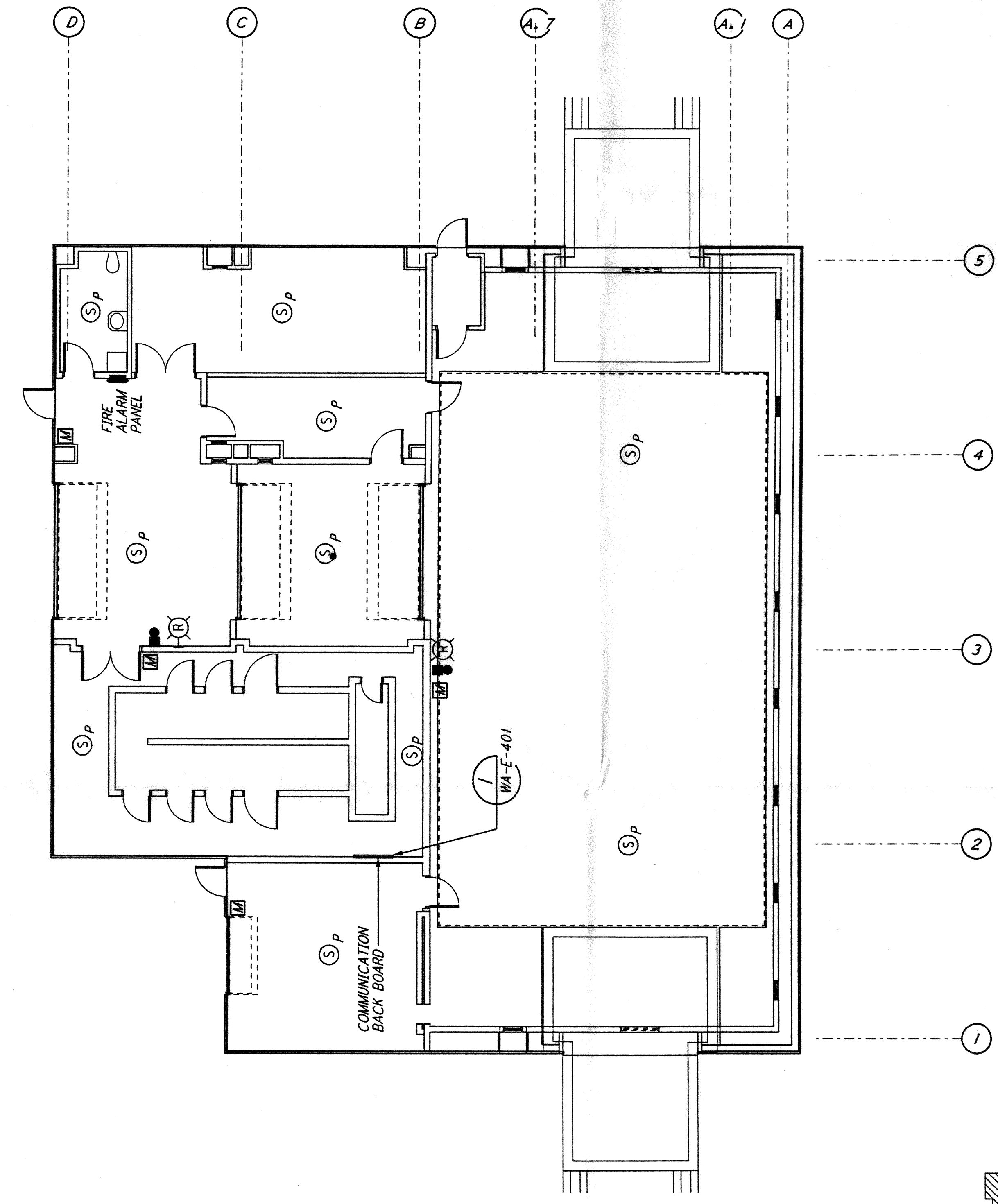


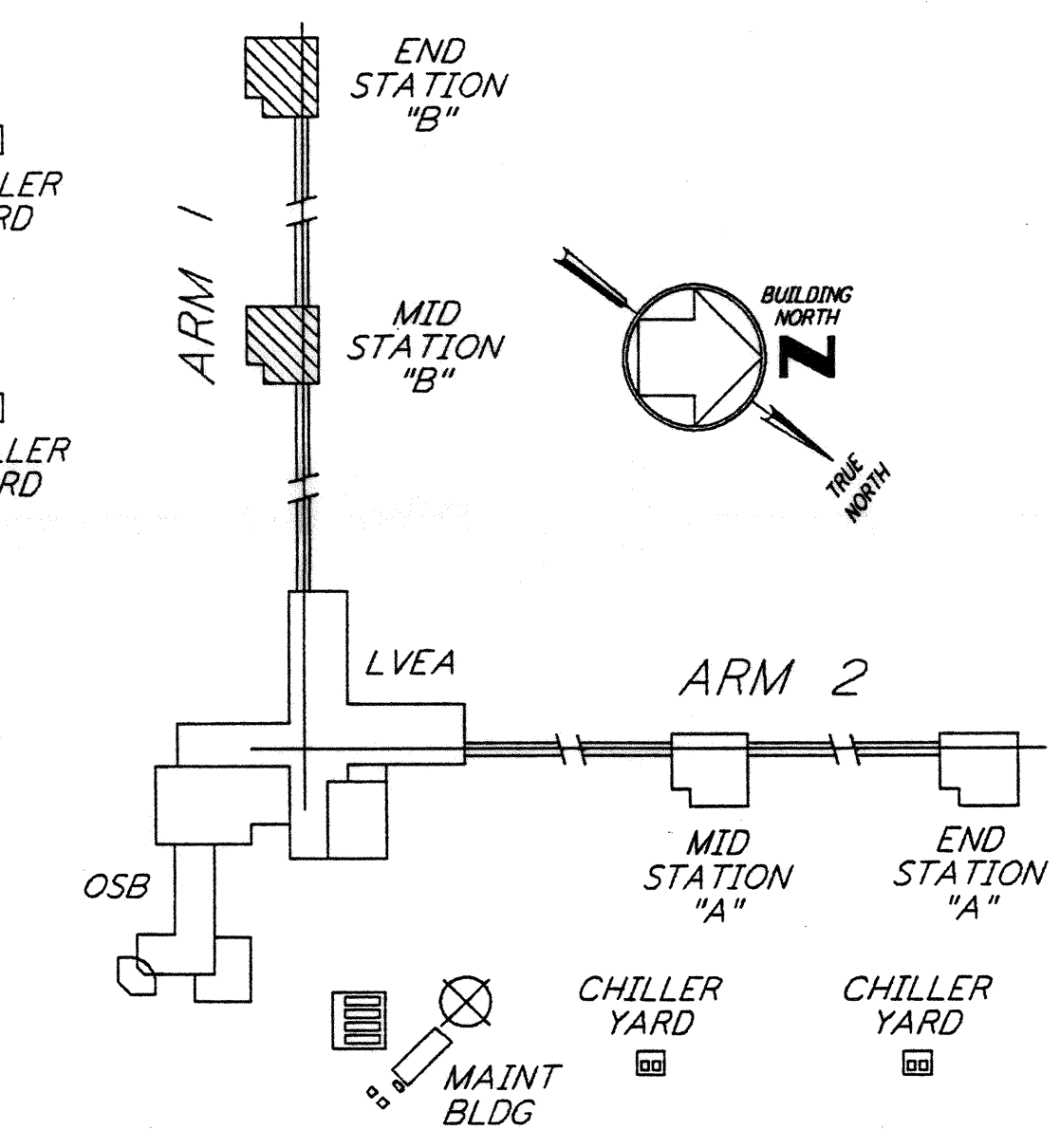
This document and the design it covers are the property of **PARSONS**. They are loaned only with the borrower's expressed written agreement that they will not be reproduced, copied, loaned, exhibited, or used in any other way, except by written consent from **PARSONS** to the borrower.



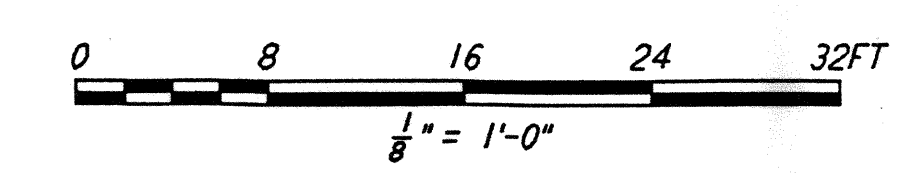
LIGHTING PLAN



COMMUNICATIONS AND FIRE DETECTION PLAN



KEY PLAN

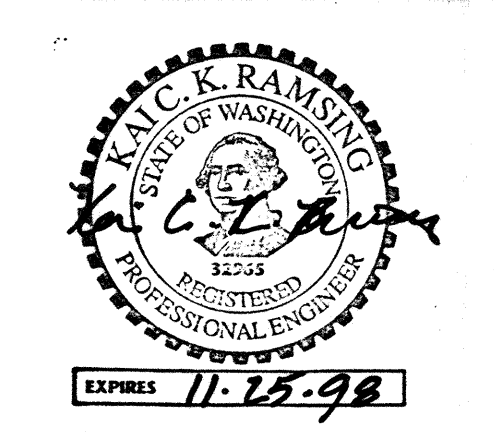


LIGO-D960417-01-0

- NOTES:**
- FOR GENERAL NOTES SEE DRAWINGS WA-E-102.
 - ALL CIRCUITS SHOWN ON THIS DRAWING ARE FROM PANEL DP-02 UNLESS OTHERWISE NOTED.
 - FOR PANEL SCHEDULES SEE DRAWING WA-E-205 AND WA-E-206.
 - FOR FIXTURE LOCATION SEE ARCHITECTURAL REFLECTED CEILING PLAN ON DRAWING WA-A-221.
 - FOR FIRE DETECTION NOTES SEE DRAWING WA-E-110.

NO.	DATE	BY	CHKD	ENGR	PROJ	DESCRIPTION
1	3-21-97	J. G.				GENERAL REVISIONS

ISSUED FOR CONSTRUCTION	DRAWN	CHECKED	ENGINEER	PROJ
	M. M.	J. K.	K. R.	T. D. M.
	6-25-96	7-3-96	7-3-96	7-8-96



PARSONS
 100 WEST WALNUT STREET
 PASADENA, CALIFORNIA

LIGO
 CALIFORNIA INSTITUTE OF TECHNOLOGY
 MASSACHUSETTS INSTITUTE OF TECHNOLOGY

LASER INTERFEROMETER
 GRAVITATIONAL-WAVE OBSERVATORY
 SITE NO. 1 - HANFORD, WASHINGTON

**ELECTRICAL
 MID & END B STATIONS
 LIGHTING, COMMUNICATIONS
 & FIRE DETECTION PLAN**

AS NOTED
 CONTRACT NUMBER: PP150969
 PROJECT NUMBER: 8094
WA-E-211