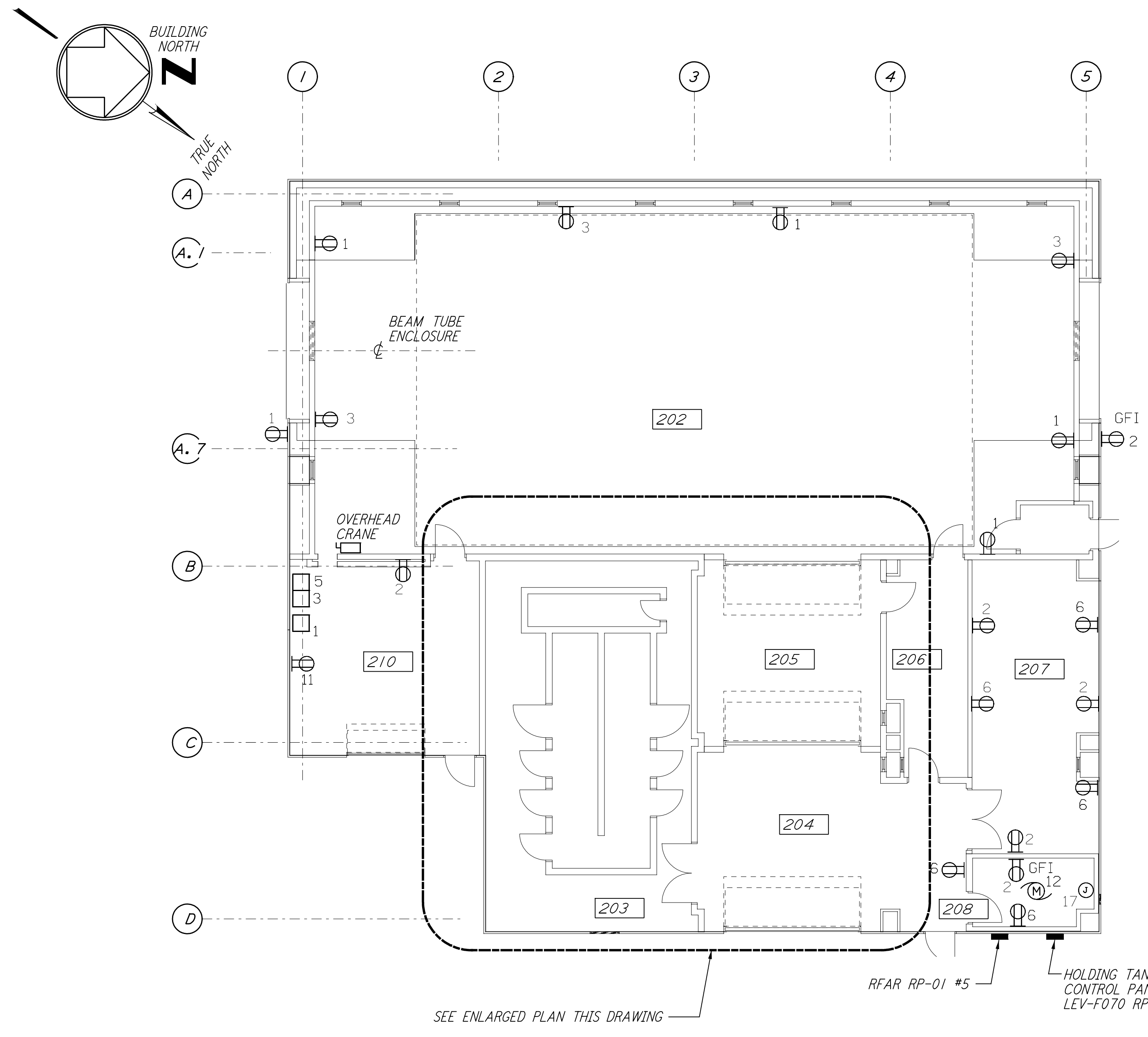
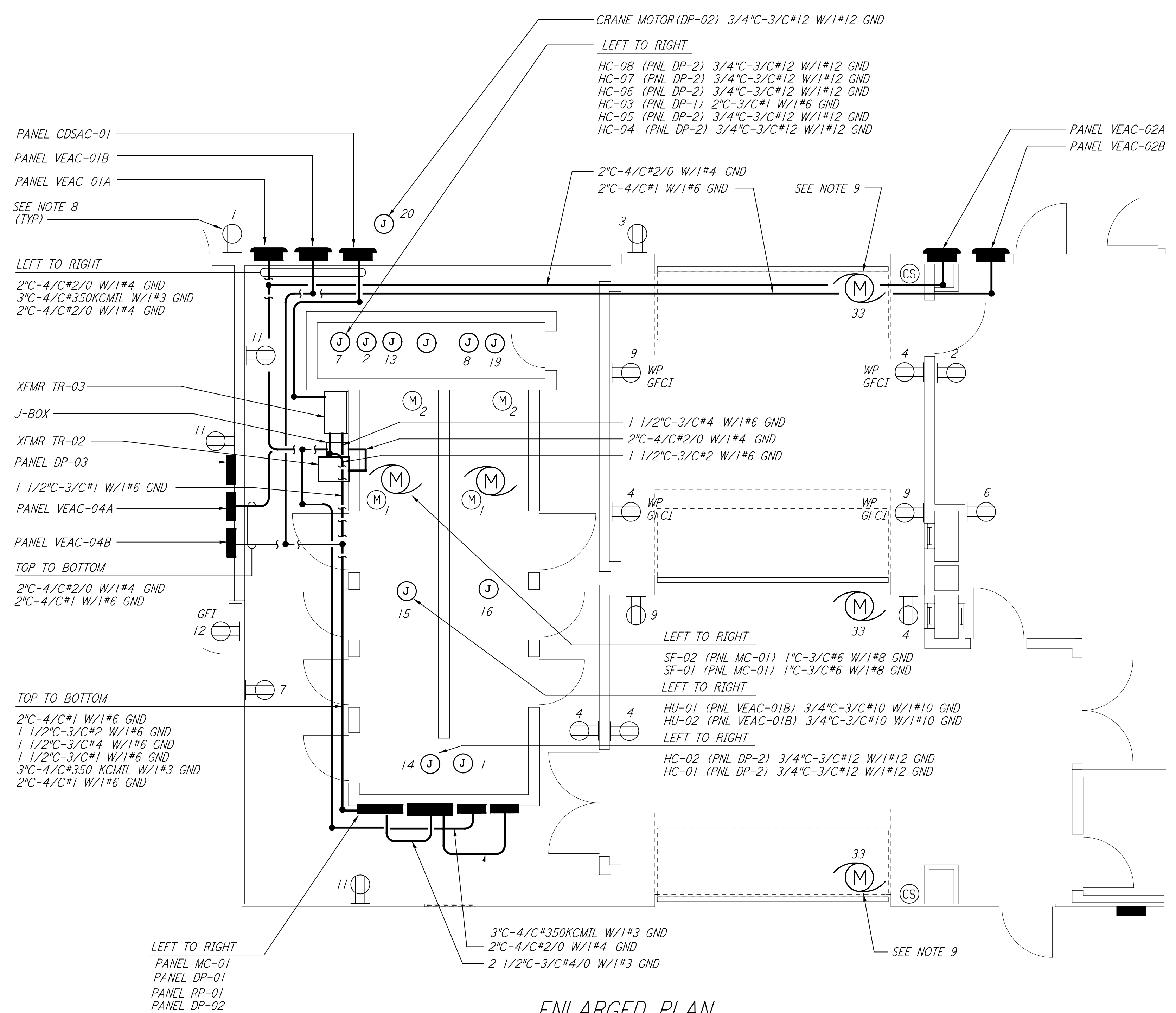


This document and the design it covers are the property of PARSONS. They are loaned only with the borrower's expressed written agreement that they will not be reproduced, copied, loaned, exhibited, or used in any other way, except by written consent from PARSONS to the borrower.



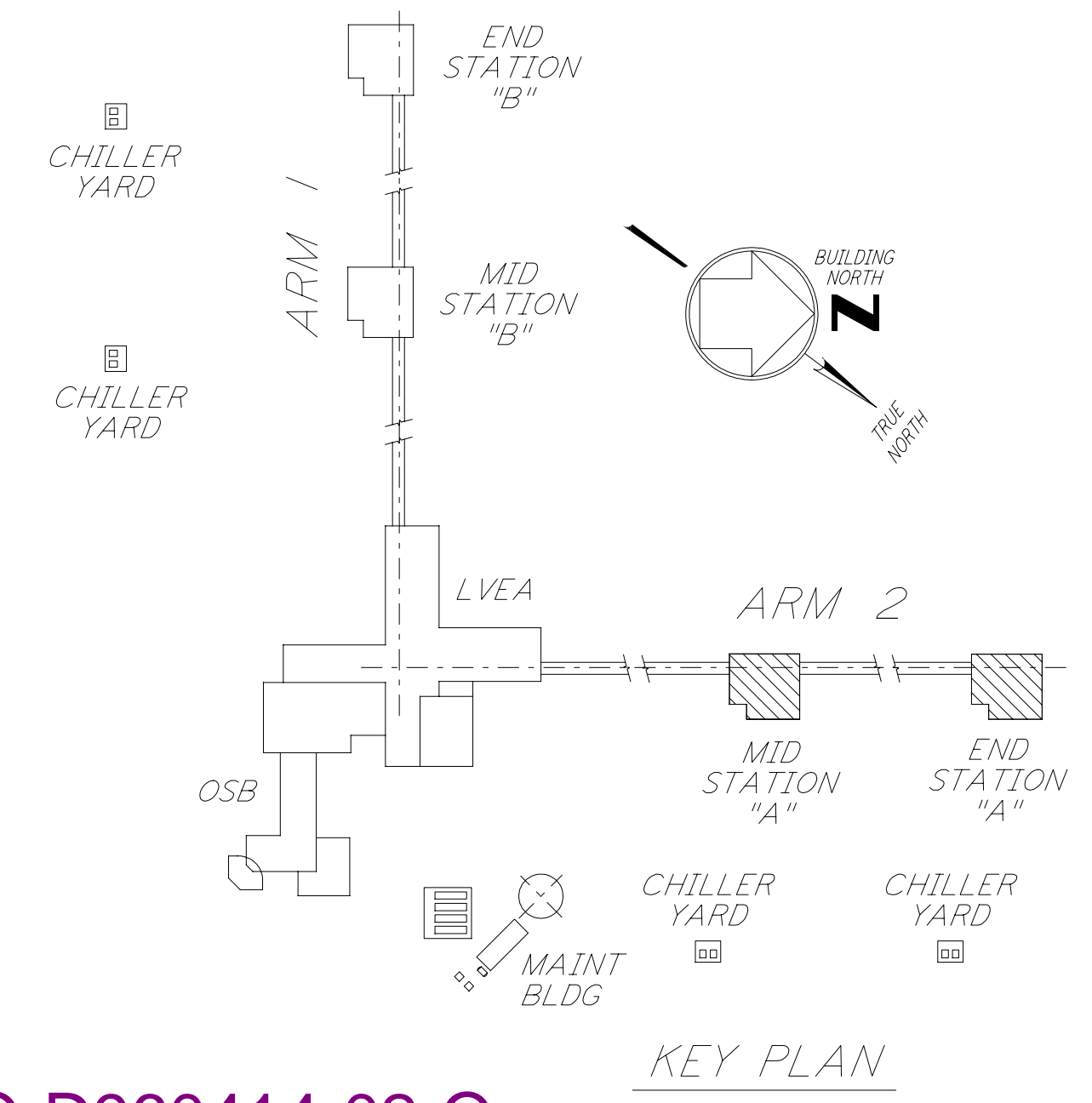
SEE ENLARGED PLAN THIS DRAWING



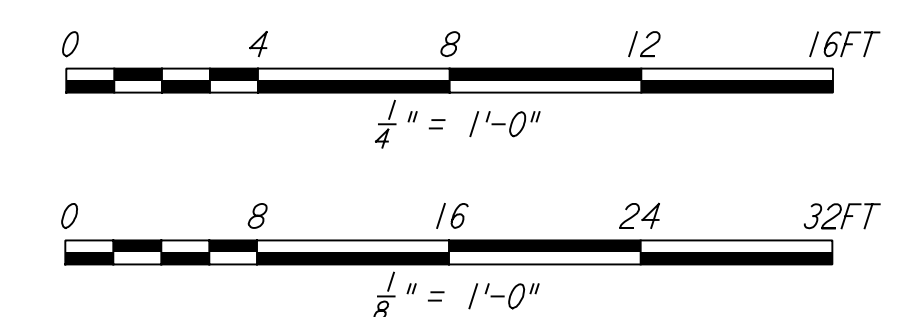
ENLARGED PLAN
 1/4" = 1'-0"

GENERAL NOTES:

- FOR STANDARD SYMBOLS, ABBREVIATIONS AND ACRONYMS SEE DWG. WA-E-001.
 - FOR ELECTRICAL SYMBOLS SEE DWG. WA-E-002.
 - FOR STANDARD INSTALLATION DETAILS SEE DWG. WA-E-404 AND WA-E-409.
 - FOR CABLE TYPE DESCRIPTION SEE DWG. WA-E-007.
 - ALL RUNS ARE SHOWN DIAGRAMMATICALLY ONLY. CONTRACTOR SHALL COORDINATE INSTALLATION WITH OTHER DISCIPLINES.
 - FOR SINGLE LINE DIAGRAM, SEE DWG. WA-E-008.
 - FOR EQUIPMENT LOCATION, SEE HVAC DWG. WA-H-211.
 - ALL CIRCUITS SHOWN ON THIS DRAWING ARE FROM PANEL RP01 UNLESS OTHERWISE NOTED.
 - CIRCUIT SHOWN FEEDING THESE ITEMS ARE FROM DP-02.
- (M)₁ = VANE ACTUATOR
 (M)₂ = SUTTER MOTOR
 (CS) = ROLL-UP DOOR CONTROL STATION



KEY PLAN



| NO. | DATE | BY | CHKD | ENGR | PROJ | DESCRIPTION |
|-----|---------|-------|-------|-------|------|---------------------------------------|
| 1 | 3-21-97 | J. G. | K. R. | K. R. | TDM | ISSUED FOR AS-BUILT GENERAL REVISIONS |
| 2 | 6-15-98 | J. G. | | | | ISSUED FOR AS-BUILT GENERAL REVISIONS |

| ISSUED FOR CONSTRUCTION | | |
|-------------------------|----------|---------|
| DRAWN | M. M. | 6-25-96 |
| CHECKED | J. K. | 7-3-96 |
| ENGINEER | K. R. | 7-3-96 |
| PROJ | M. D. W. | 7-8-96 |

AS-BUILT DRAWINGS



LIGO-D960414-02-O

LASER INTERFEROMETER GRAVITATIONAL-WAVE OBSERVATORY
 SITE NO. 1 - HANFORD, WASHINGTON

| | | | |
|--------------------------------------------------------------|-----------|----------------|----------------|
| TITLE | SCALE | PROJECT NUMBER | PROJECT NUMBER |
| ELECTRICAL MID & END A STATIONS ABOVEGROUND POWER PLAN | AS NOTED | PP150969 | 8094 |
| SHEET NUMBER | REVISIONS | | |
| WA-E-204 | | | |