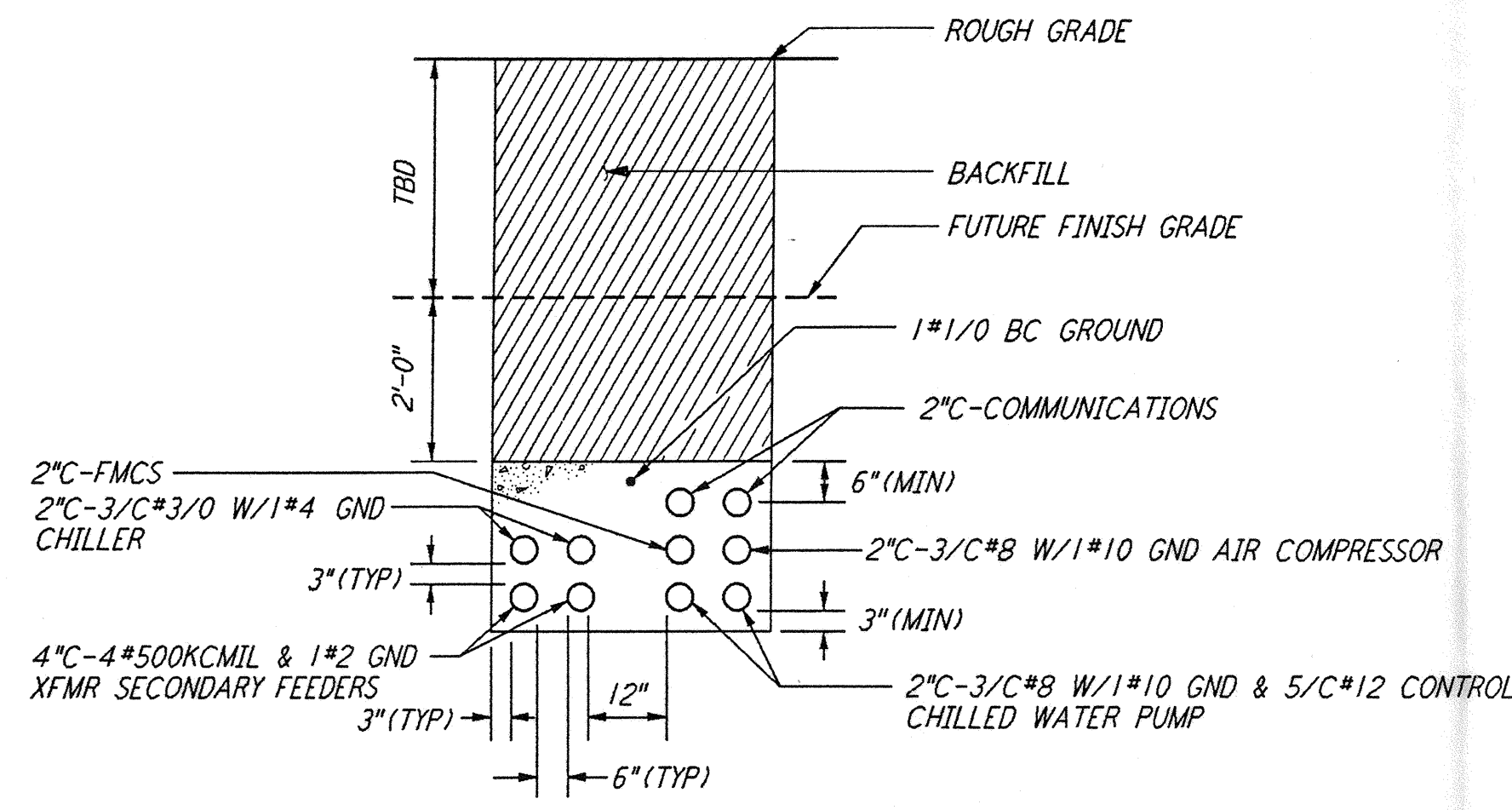
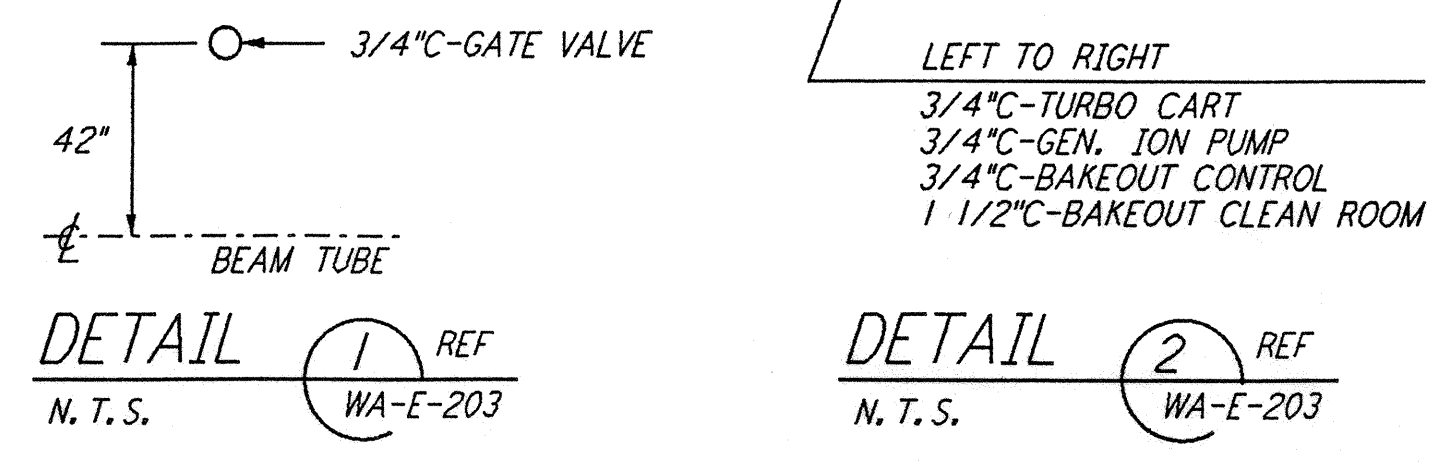
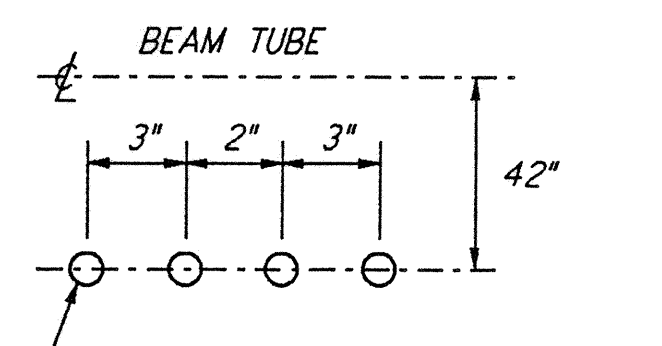
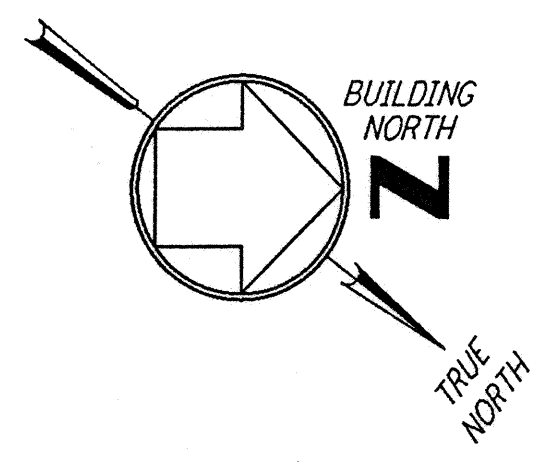


GENERAL NOTES:

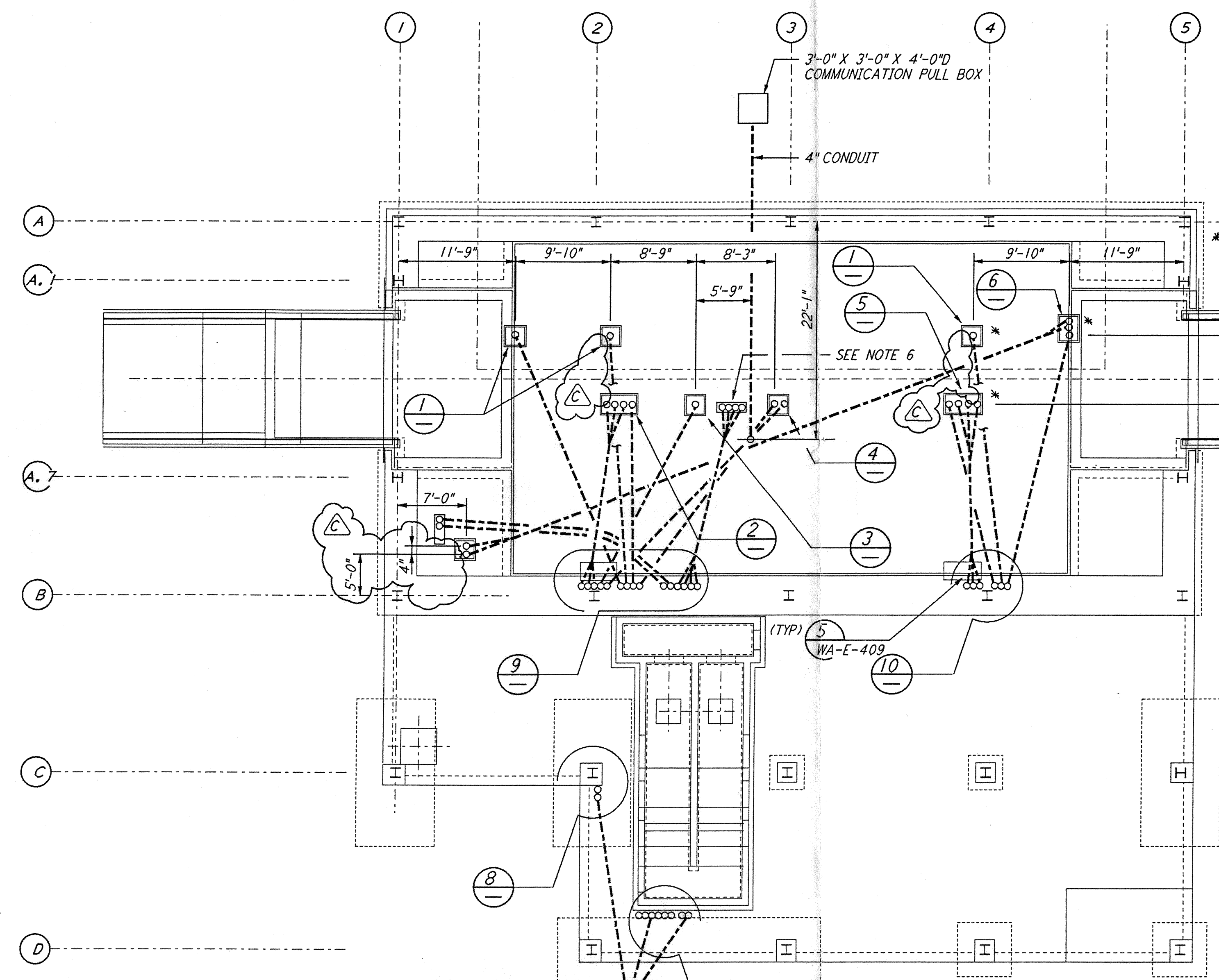
1. FOR STANDARD SYMBOLS, ABBREVIATIONS AND ACRONYMS SEE DWG. WA-E-001.
2. FOR ELECTRICAL SYMBOLS SEE DWG. WA-E-002.
3. FOR STANDARD INSTALLATION DETAILS SEE DWG. WA-E-405 THRU WA-E-407.
4. FOR CABLE TYPE DESCRIPTION SEE DWG. WA-E-007.
5. ALL RUNS ARE SHOWN DIAGRAMMATICALLY ONLY, CONTRACTOR SHALL COORDINATE INSTALLATION WITH OTHER DISCIPLINES.
6. COORDINATES OF CDS POWER CONDUIT STUB-UPS SHALL BE COORDINATED WITH THE VACUUM EQUIPMENT VENDOR.

NOTES:

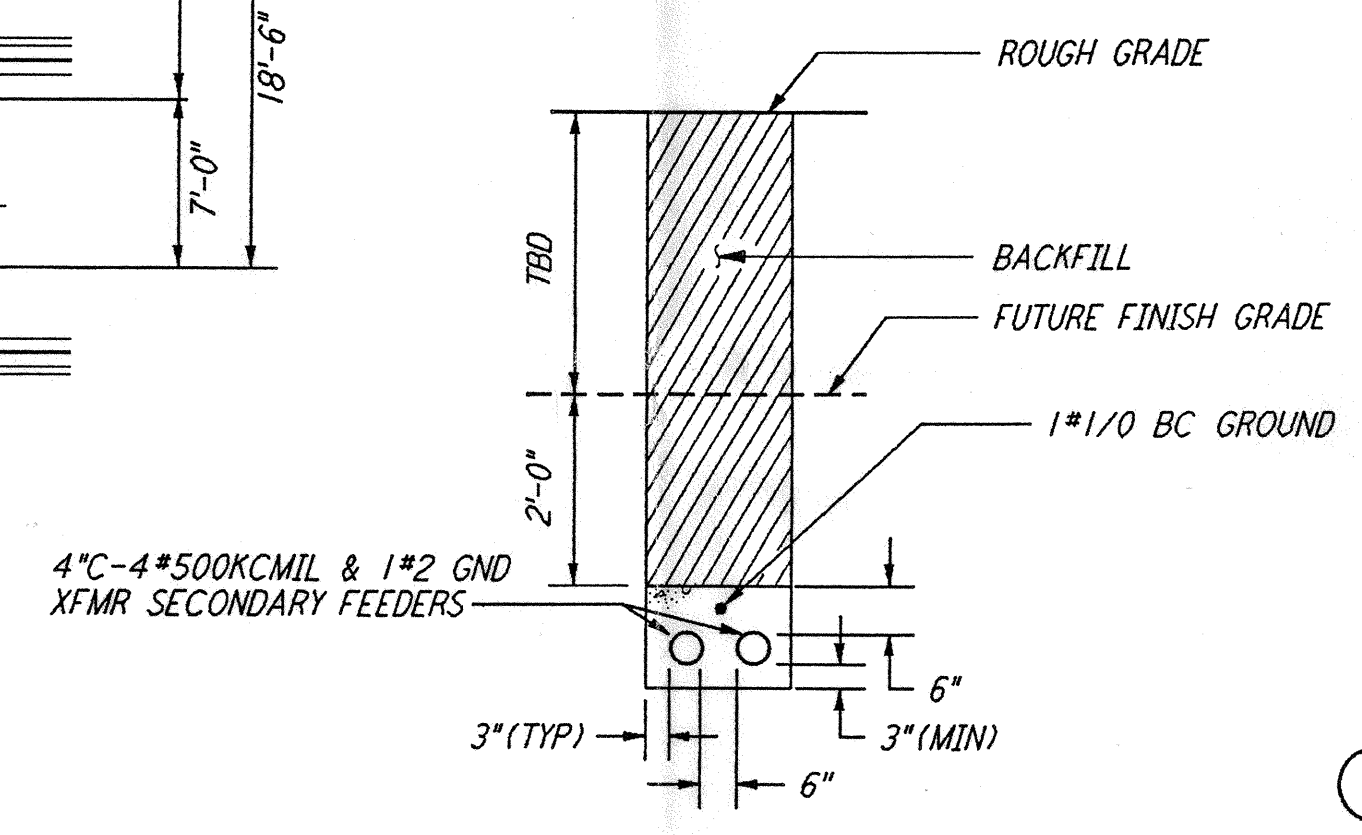
1. FOR NODE NUMBERING SCHEDULE SEE DWG. WA-E-008.



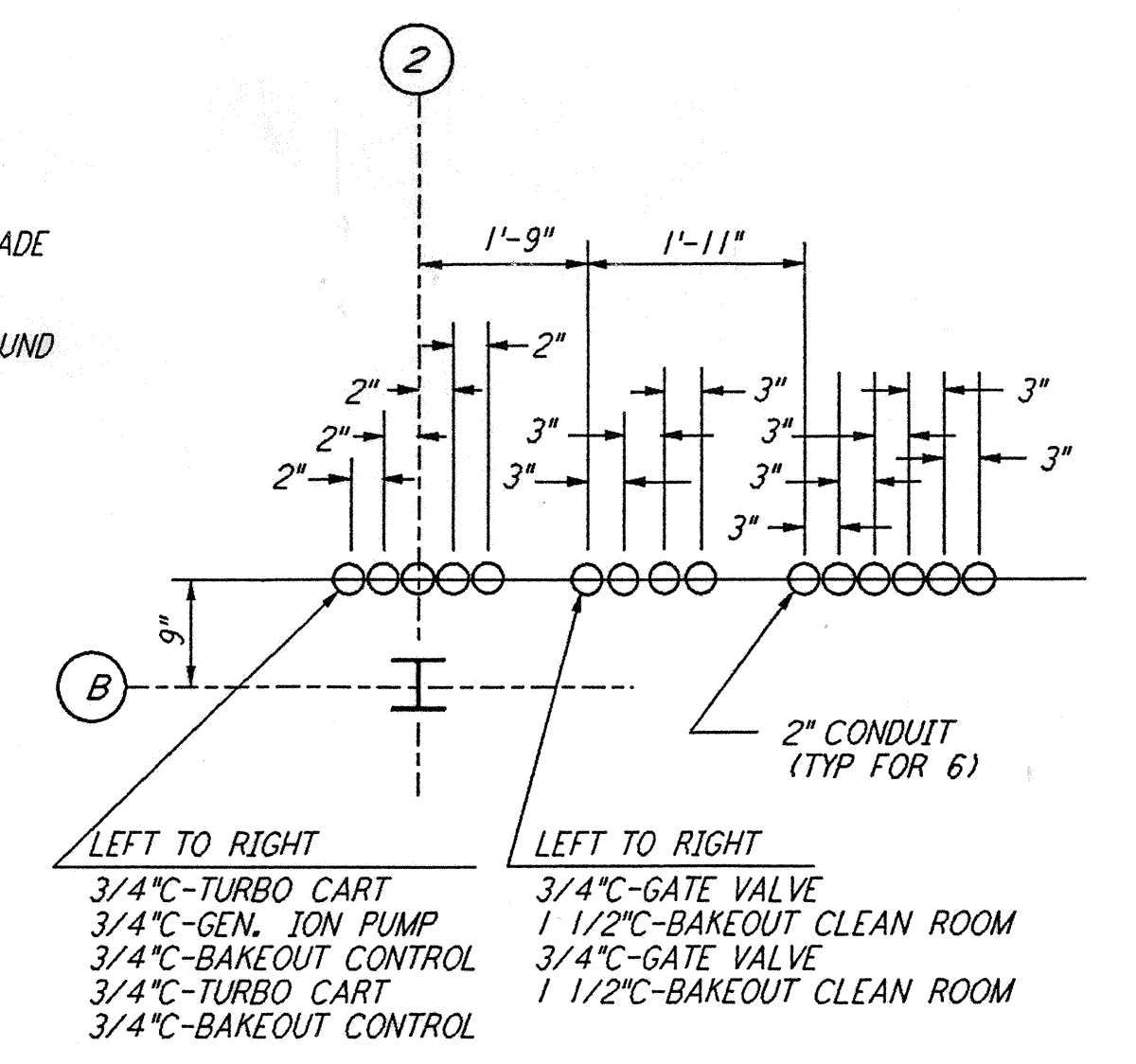
DUCT BANK SECTION A REF
 N.T.S. WA-E-203



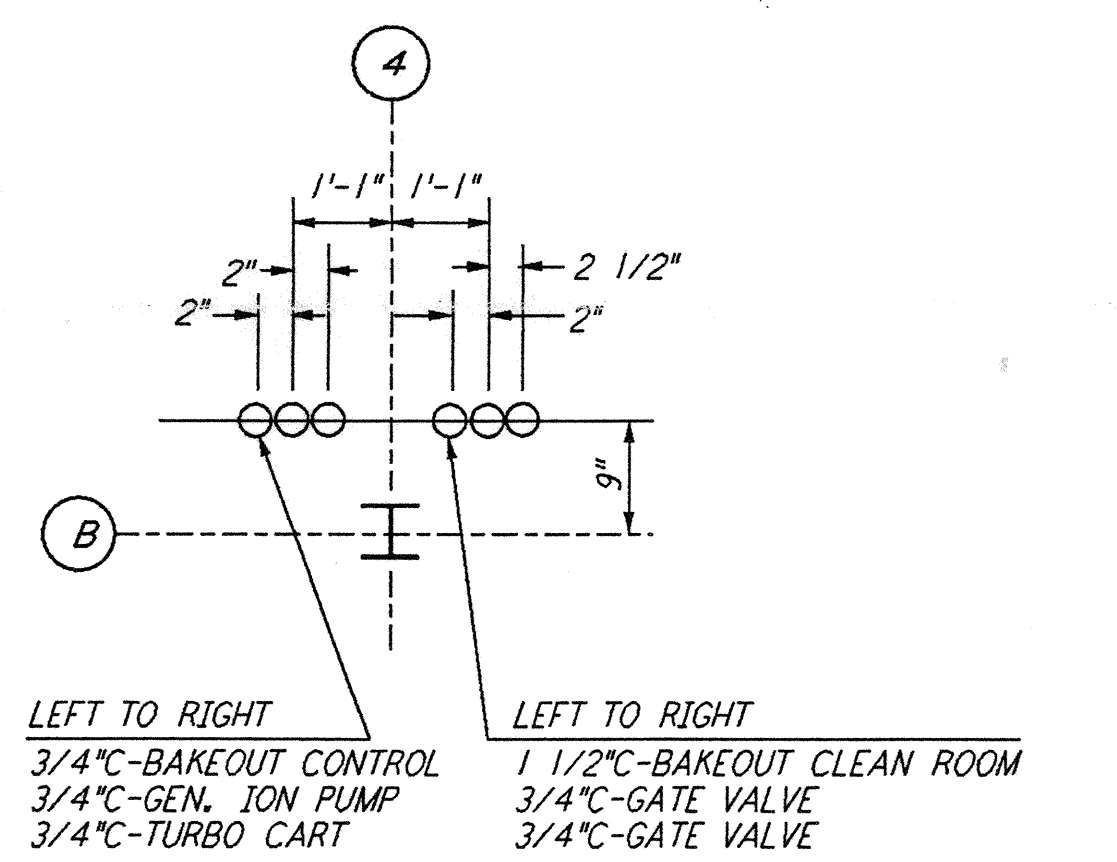
* THESE CONDUITS ARE ONLY REQUIRED AT THE MID STATIONS.



DUCT BANK SECTION B REF
 N.T.S. WA-E-203



DETAIL 9 REF
 N.T.S. WA-E-203



DETAIL 10 REF
 N.T.S. WA-E-203

UNCAP EXISTING CONDUITS AND EXTEND TO STUB-UP LOCATION AS INDICATED.

EXTEND CONDUITS FROM PULLBOX TO STUB-UP LOCATION AS INDICATED.

3*2 (TRIPLEXED) & 1*6 GND (DIRECT BURIAL) CONT. TO END STATION SEE DWG. WA-E-005 (BY OTHERS)

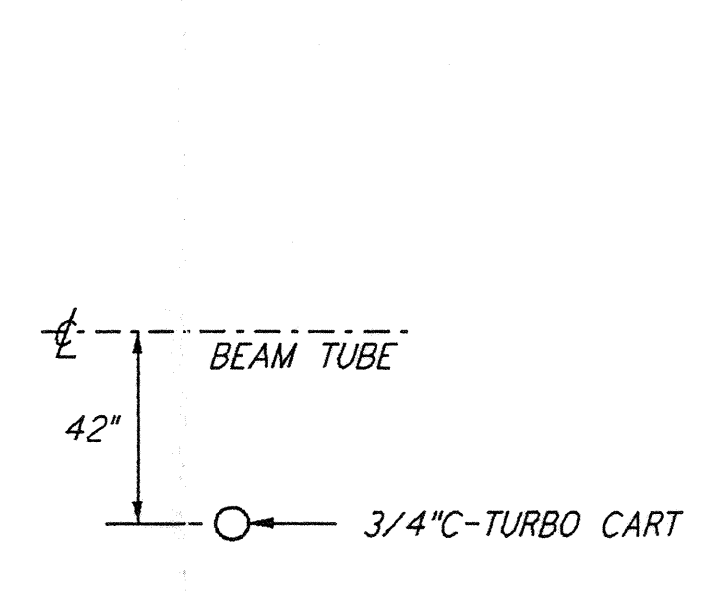
LEFT TO RIGHT
 2*2*3/4 W/1*10 GND AIR COMPRESSORS
 2*2*2* COMMUNICATIONS
 2*2*3/4 W/1*10 GND
 2*2*3/4 W/1*4 GND

INSTALL (2) 4*500 KCMIL & 1*2 GND CABLES IN (2) 4* C PROVIDED BY OTHERS

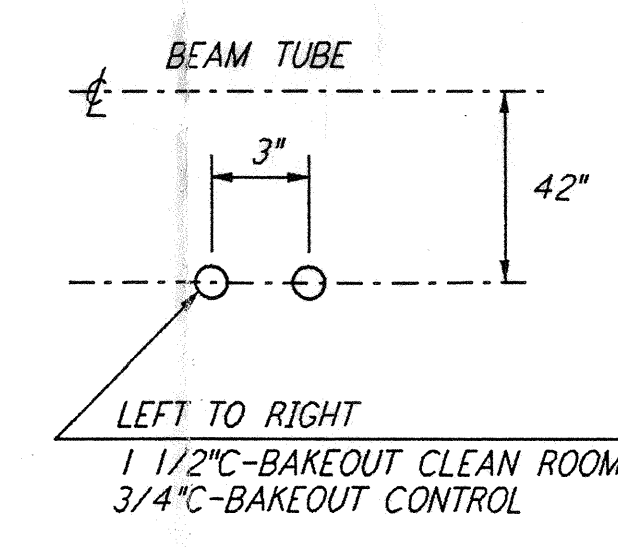
3*2 (TRIPLEXED) & 1*6 GND (DIRECT BURIAL) CONT. TO UTILITY SWGR. SEE DWG. WA-E-005 (BY OTHERS)

FOR THIS COORDINATE LOCATION SEE CIVIL DRAWING BT-C-015

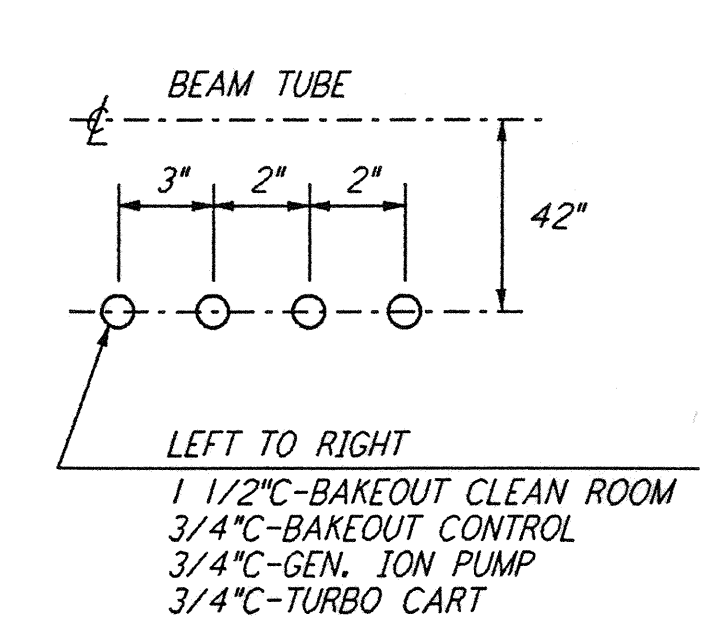
2*2*3/4 W/1*10 GND
 2*2*3/4 W/1*4 GND



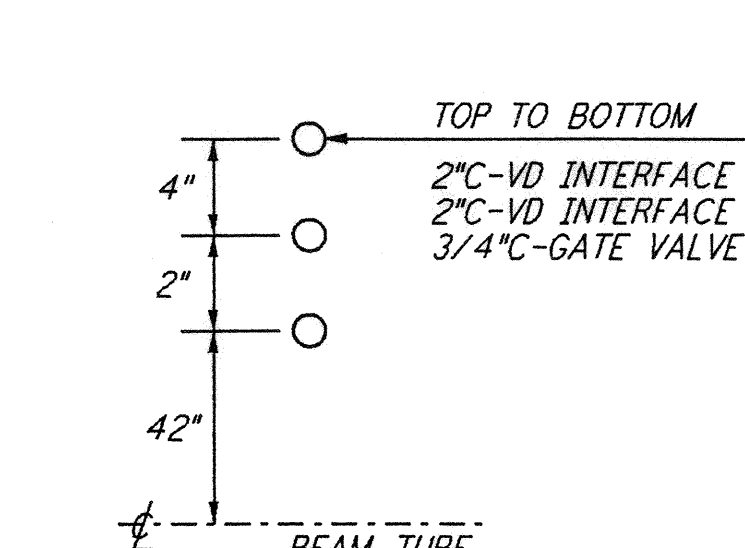
DETAIL 3 REF
 N.T.S. WA-E-203



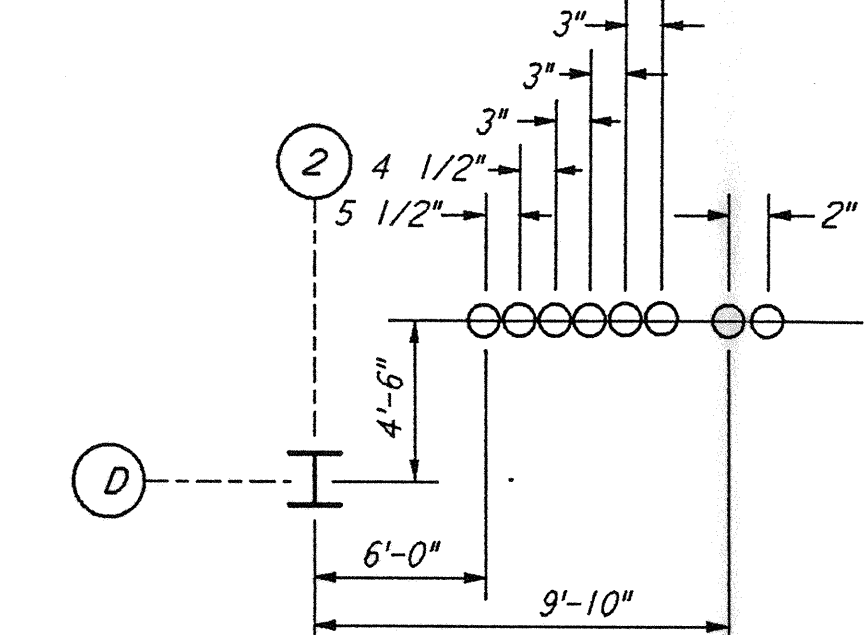
DETAIL 4 REF
 N.T.S. WA-E-203



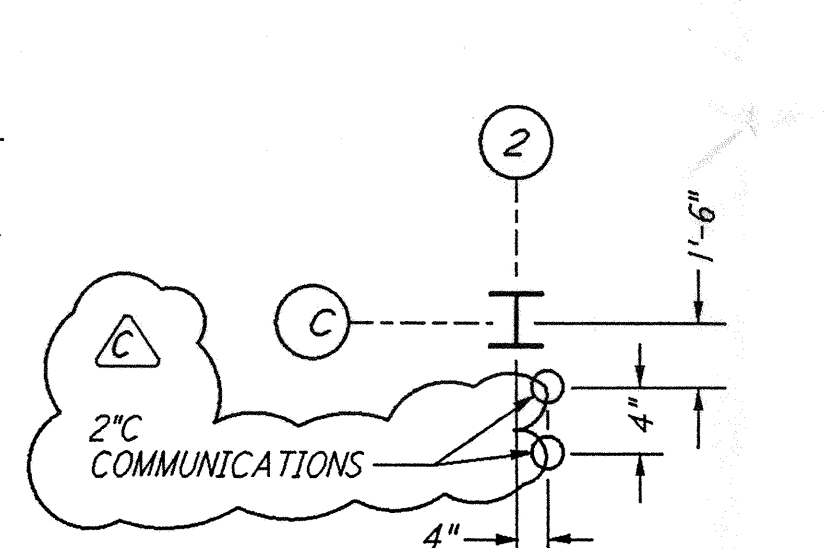
DETAIL 5 REF
 N.T.S. WA-E-203



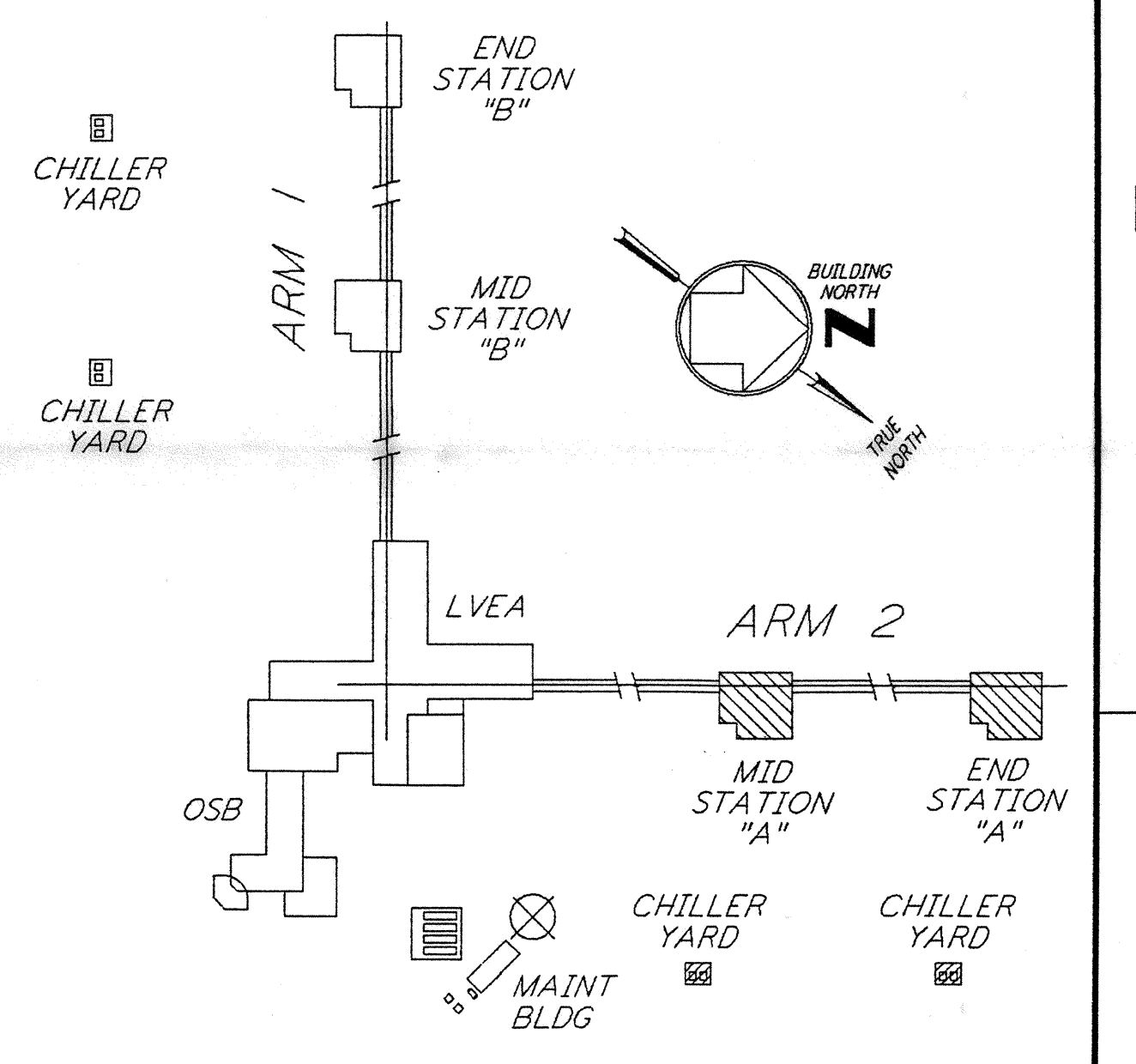
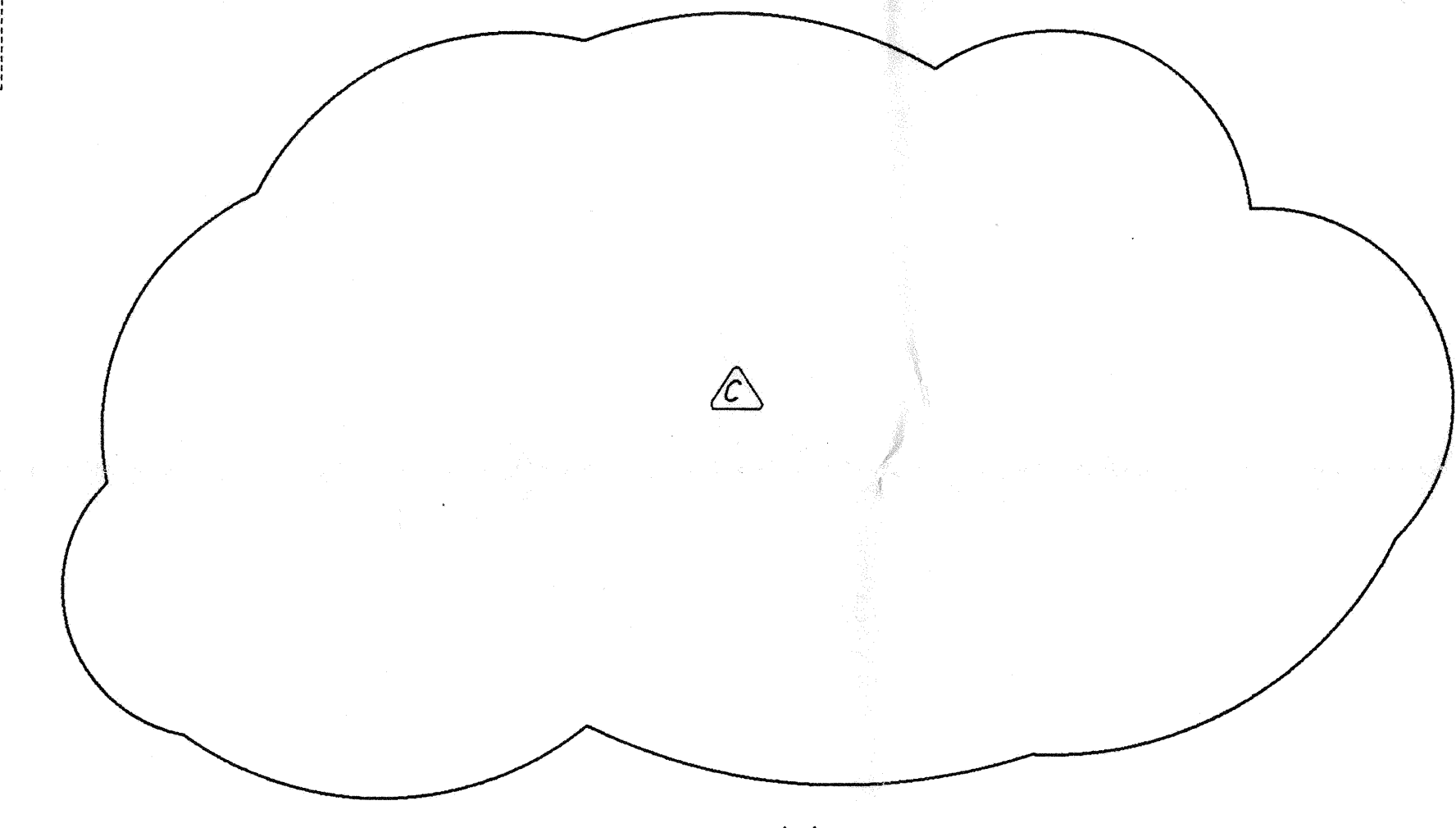
DETAIL 6 REF
 N.T.S. WA-E-203



DETAIL 7 REF
 N.T.S. WA-E-203



DETAIL 8 REF
 N.T.S. WA-E-203



KEY PLAN

LIGO-D960413-C-0

This document and the design it covers are the property of PARSONS. They are loaned only with the borrower's expressed written agreement that they will not be reproduced, copied, loaned, exhibited, or used in any other way, except by written consent from PARSONS to the borrower.

This document and the design it covers are the property of PARSONS. They are loaned only with the borrower's expressed written agreement that they will not be reproduced, copied, loaned, exhibited, or used in any other way, except by written consent from PARSONS to the borrower.

NO.	DATE	BY	CHKD	ENGR	PROJ	DESCRIPTION
C	5-22-96	RAF				BID ADDENDUM #2
B	4-19-96					FINAL DESIGN REVIEW & BID
A	10-31-95					PRELIMINARY DESIGN REVIEW

DRAWN	J. G.
CHECKED	
ENGINEER	
PROJ	



100 WEST WALNUT STREET
 PASADENA, CALIFORNIA



CALIFORNIA INSTITUTE OF TECHNOLOGY
 MASSACHUSETTS INSTITUTE OF TECHNOLOGY

**LASER INTERFEROMETER
 GRAVITATIONAL-WAVE OBSERVATORY
 SITE NO. 1 - HANFORD, WASHINGTON**

TITLE	SCALE	CONTRACT NUMBER	PROJECT NUMBER
ELECTRICAL MID & END STATIONS UNDERGROUND PLAN		PP150969	8094
SHEET NUMBER	REVISIONS	WA-E-203	