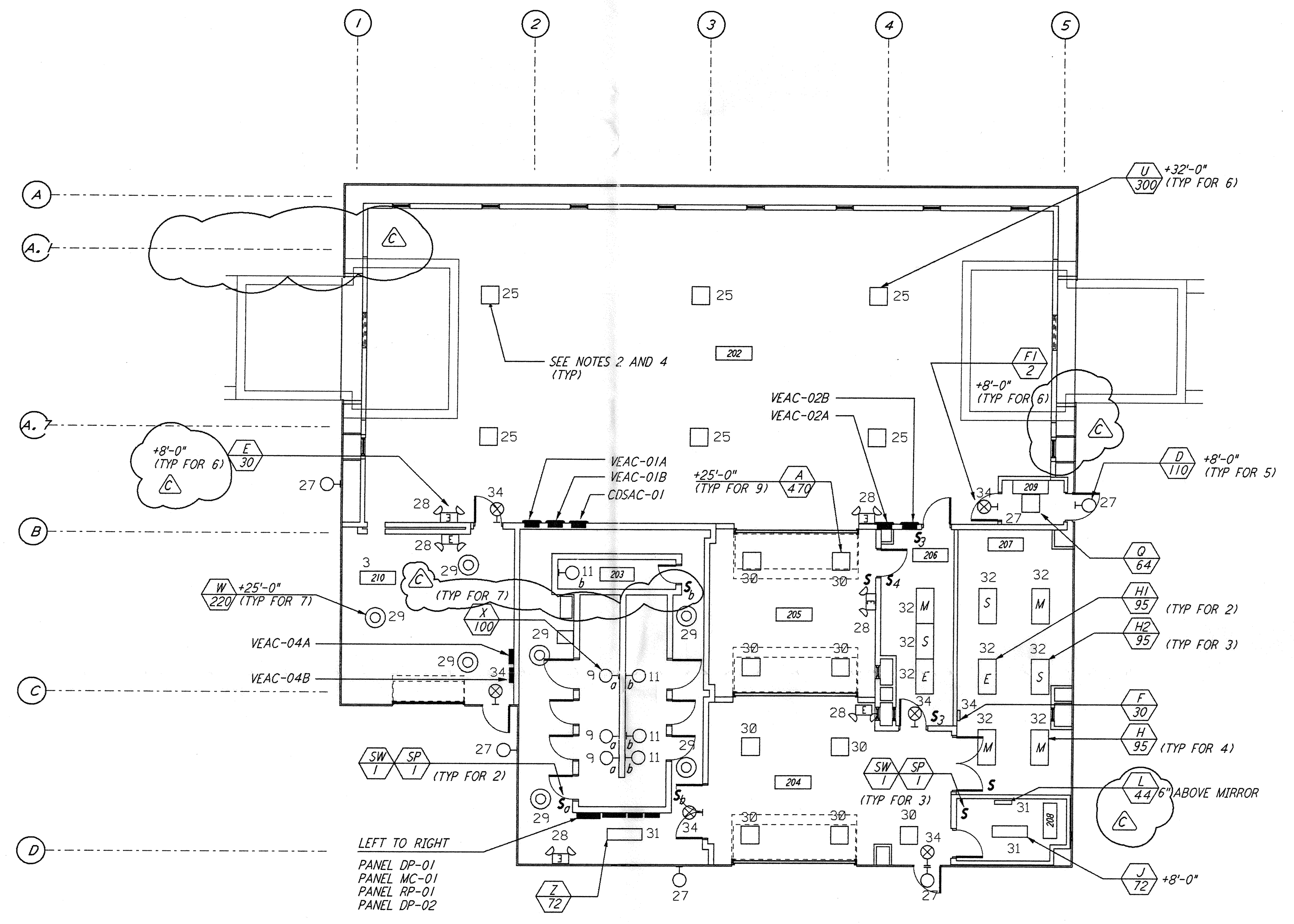
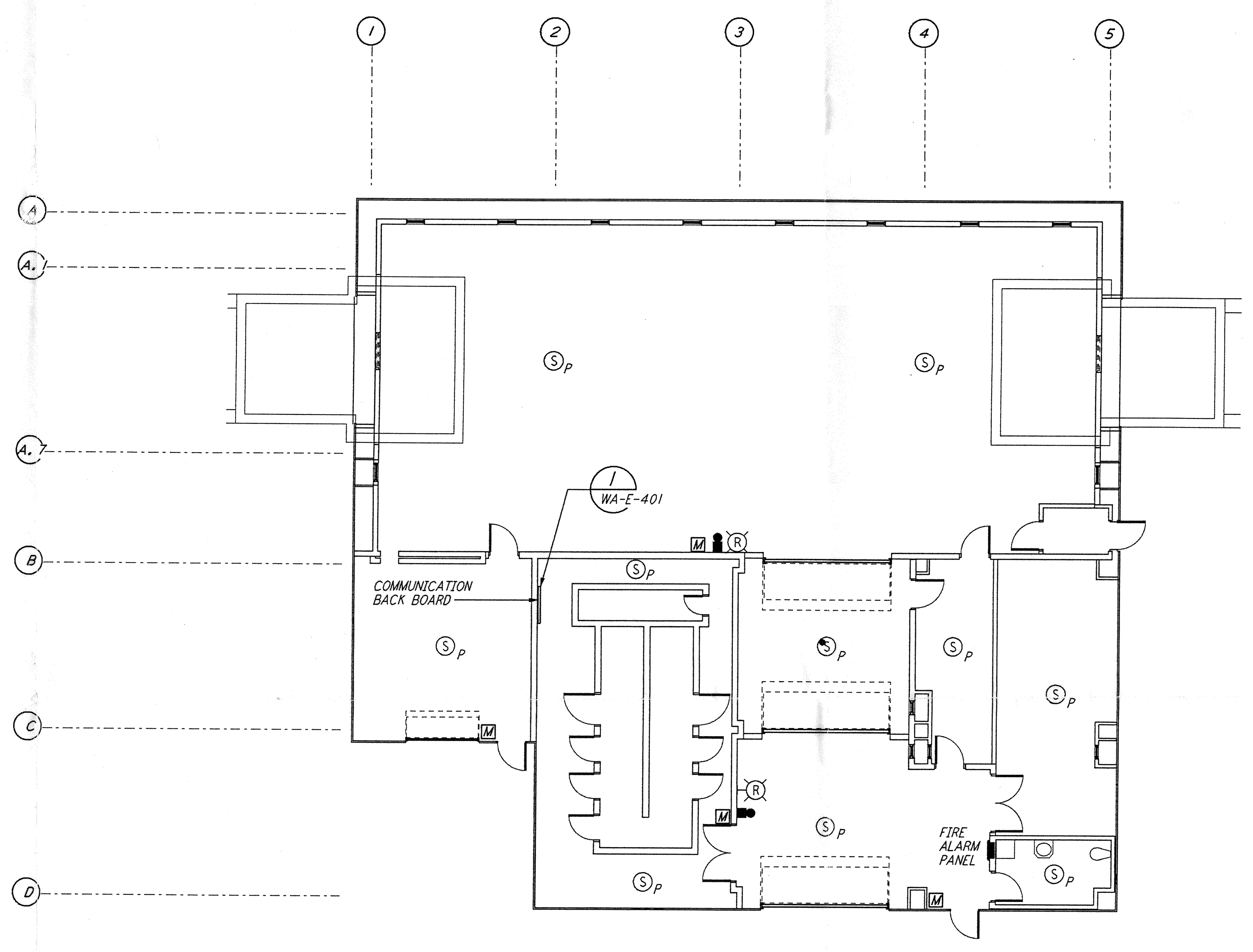


- NOTES:**
- FOR GENERAL NOTES SEE DRAWINGS WA-E-102.
 - ALL CIRCUITS SHOWN ON THIS DRAWING ARE FROM PANEL DP-02 UNLESS OTHERWISE NOTED.
 - FOR PANEL SCHEDULES SEE DRAWING WA-E-205 AND WA-E-206.
 - FOR FIXTURE LOCATION SEE ARCHITECTURAL REFLECTED CEILING PLAN ON DRAWING WA-A-221.
 - FOR FIRE DETECTION NOTES SEE DRAWING WA-E-110.

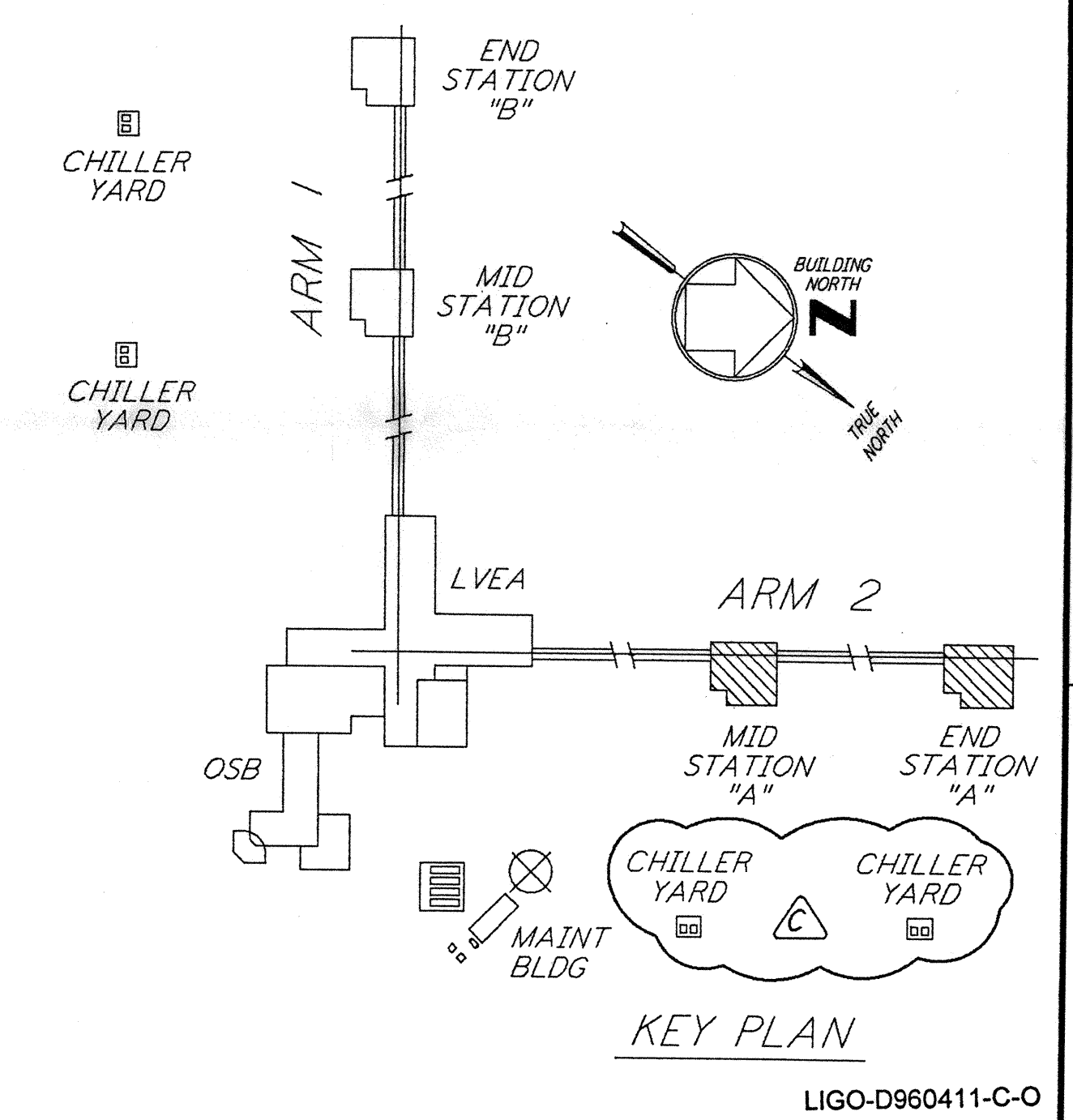
This document and the design it covers are the property of PARSONS. They are loaned only with the borrower's expressed written agreement that they will not be reproduced, copied, loaned, exhibited, or used in any other way, except by written consent from PARSONS to the borrower.



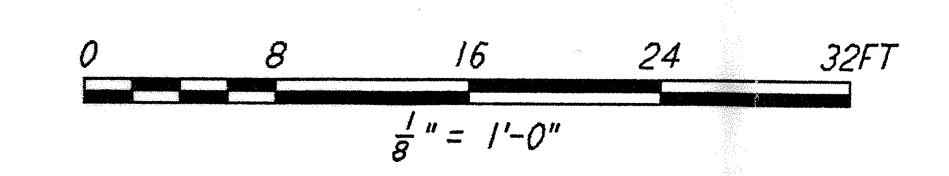
LIGHTING PLAN



COMMUNICATIONS AND FIRE DETECTION PLAN



KEY PLAN



NO.	DATE	BY	CHKD	ENGR	PROJ	DESCRIPTION
C	5-22-96	RAF	JG	TDM		BID ADDENDUM #2
B	4-19-96			TDM		FINAL DESIGN REVIEW & BID
A	10-31-95			TDM		PRELIMINARY DESIGN REVIEW

DRAWN	J. G.
CHECKED	
ENGINEER	
PROJ	

PARSONS

100 WEST WALNUT STREET
PASADENA, CALIFORNIA

LIGO

CALIFORNIA INSTITUTE OF TECHNOLOGY
MASSACHUSETTS INSTITUTE OF TECHNOLOGY

LASER INTERFEROMETER
GRAVITATIONAL-WAVE OBSERVATORY
SITE NO. 1 - HANFORD, WASHINGTON

**ELECTRICAL
MID & END A STATIONS
LIGHTING, COMMUNICATIONS
& FIRE DETECTION PLAN**

AS NOTED
PP150969
8094

WA-E-201