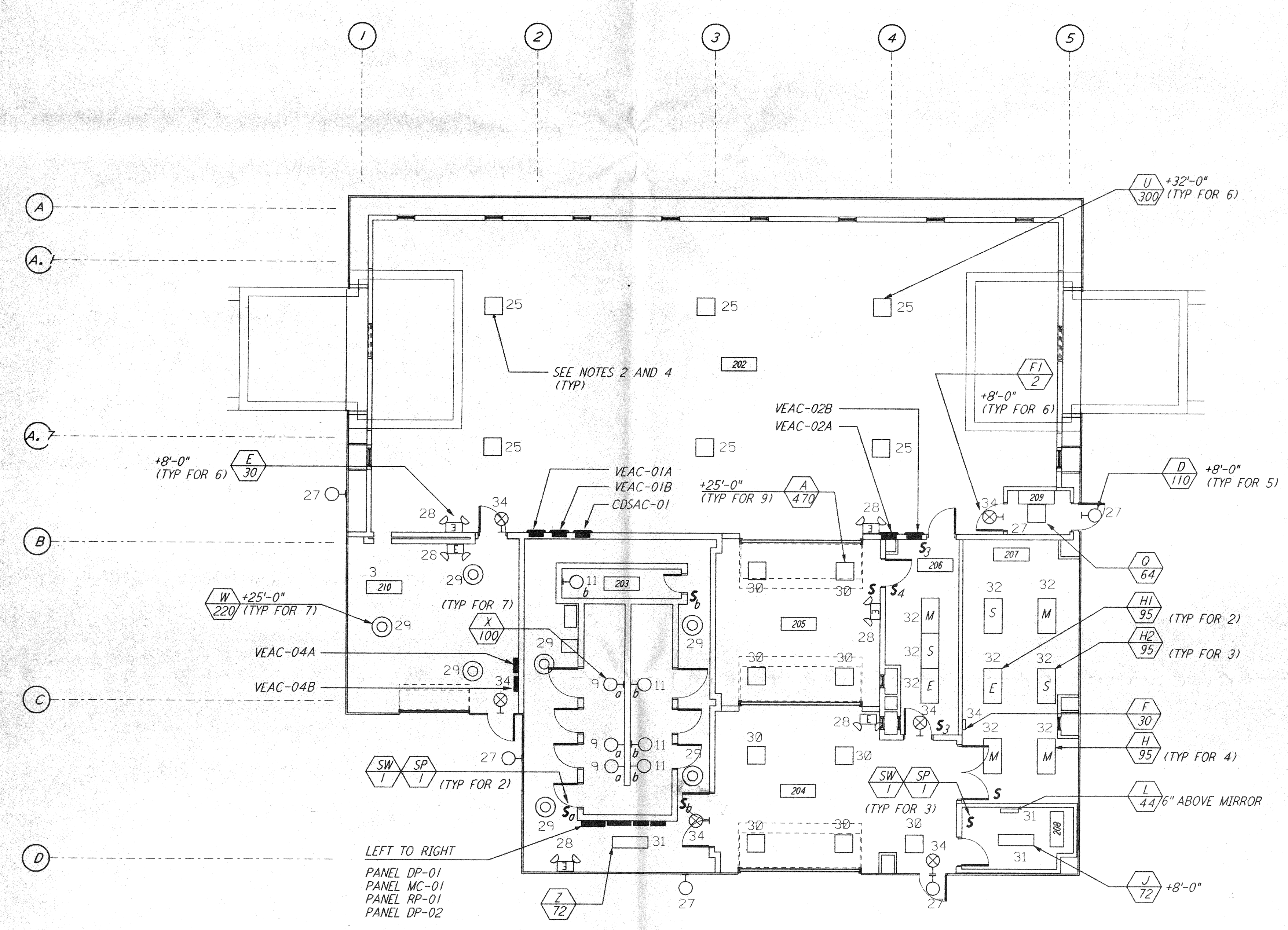
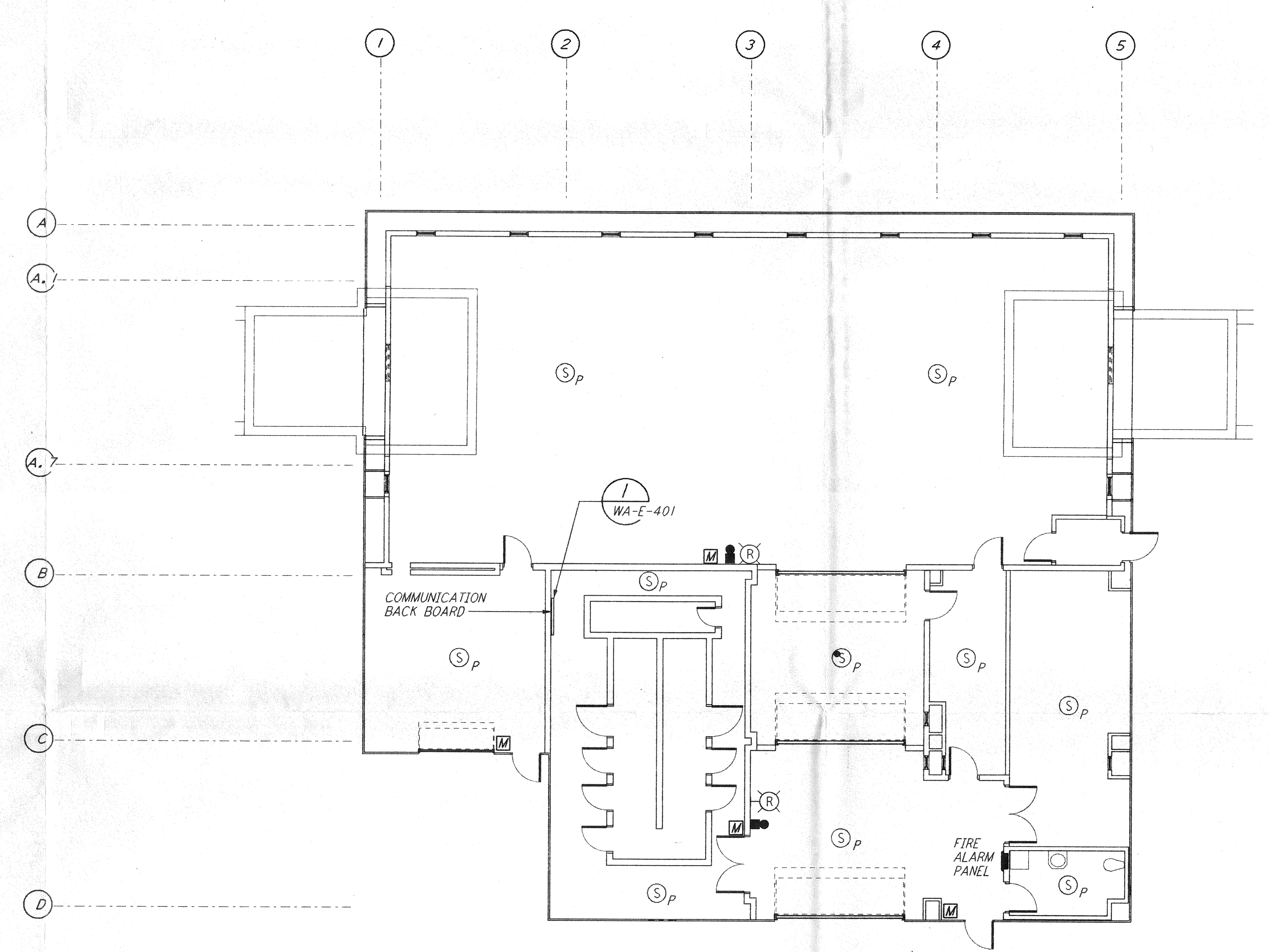


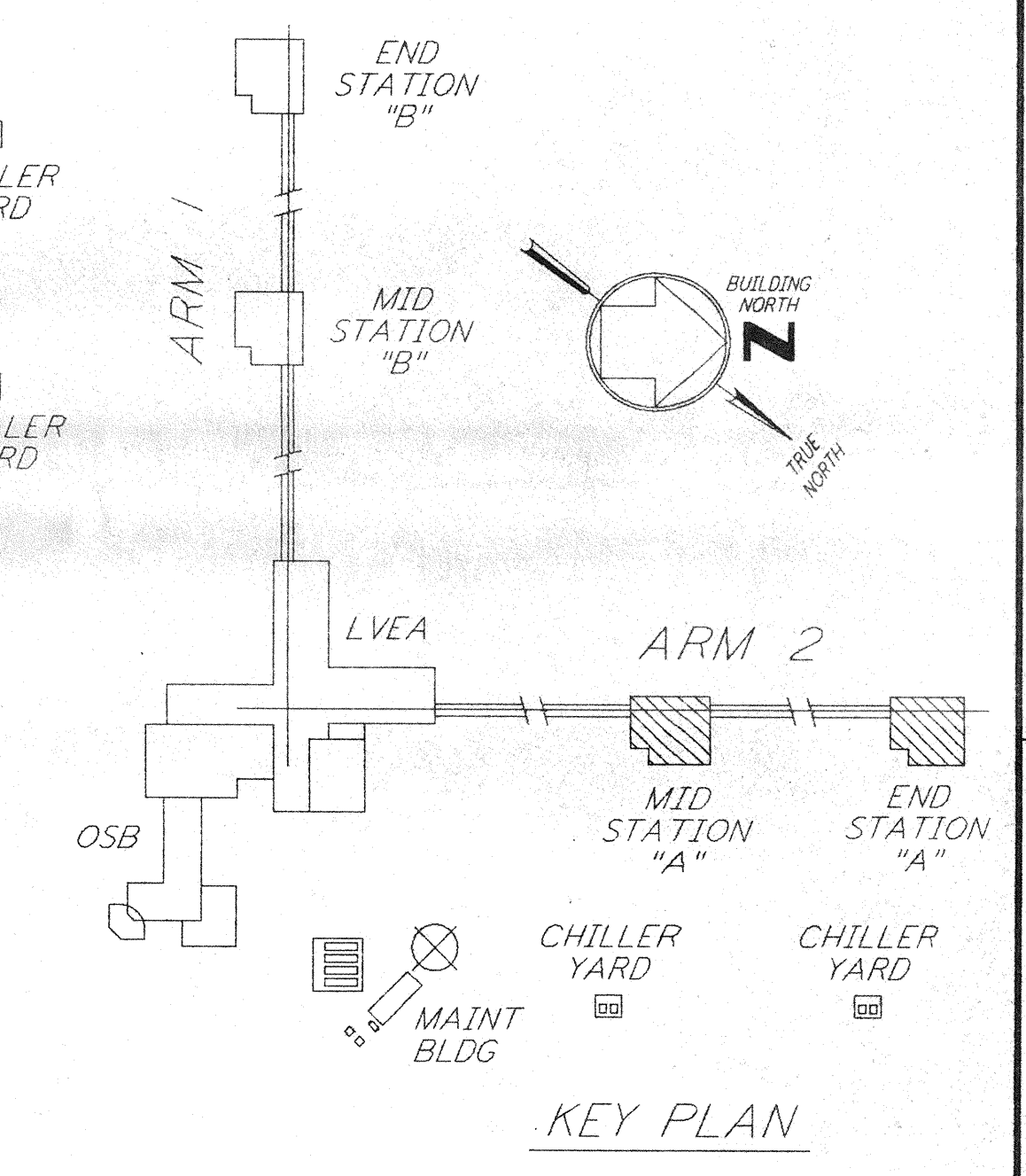
- NOTES:**
- FOR GENERAL NOTES SEE DRAWINGS WA-E-102.
 - ALL CIRCUITS SHOWN ON THIS DRAWING ARE FROM PANEL DP-02 UNLESS OTHERWISE NOTED.
 - FOR PANEL SCHEDULES SEE DRAWING WA-E-205 AND WA-E-206.
 - FOR FIXTURE LOCATION SEE ARCHITECTURAL REFLECTED CEILING PLAN ON DRAWING WA-A-221.
 - FOR FIRE DETECTION NOTES SEE DRAWING WA-E-110.



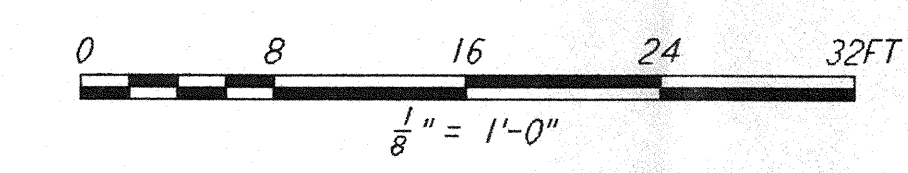
LIGHTING PLAN



COMMUNICATIONS AND FIRE DETECTION PLAN

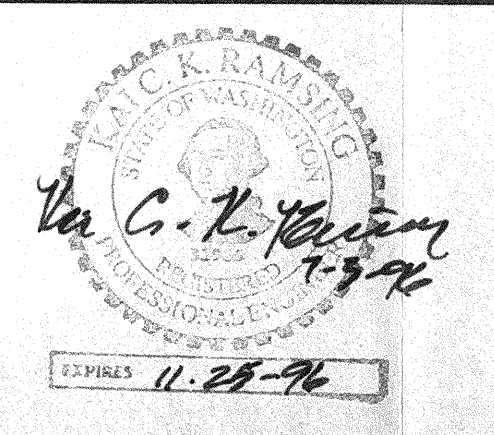


KEY PLAN



NO.	DATE	BY	CHKD	ENGR	PROJ	DESCRIPTION

ISSUED FOR CONSTRUCTION	
DRAWN	M. M. 6-25-96
CHECKED	7-3-96
ENGINEER	7.5.96
PROJ	71896



PARSONS

100 WEST WALNUT STREET
PASADENA, CALIFORNIA

LIGO

CALIFORNIA INSTITUTE OF TECHNOLOGY
MASSACHUSETTS INSTITUTE OF TECHNOLOGY

LASER INTERFEROMETER
GRAVITATIONAL-WAVE OBSERVATORY
SITE NO. 1 - HANFORD, WASHINGTON

ELECTRICAL
MID & END A STATIONS
LIGHTING, COMMUNICATIONS
& FIRE DETECTION PLAN

AS NOTED PP150969 8094

WA-E-201

LIGO-D960411-00-0

This document and the design it covers are the property of PARSONS. They are loaned only with the borrower's expressed written agreement that they will not be reproduced, copied, loaned, exhibited, or used in any other way, except by written consent from PARSONS to the borrower.