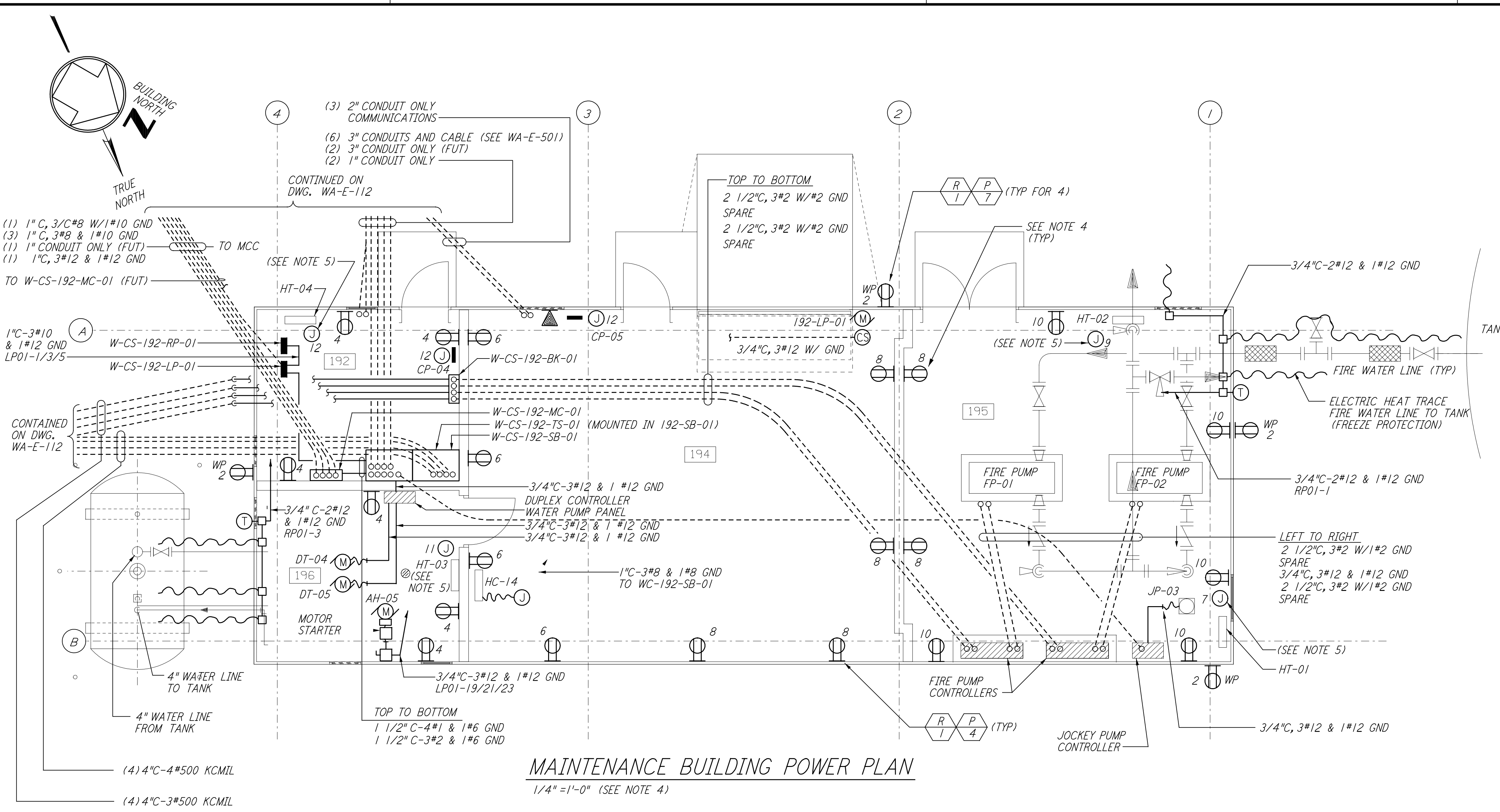
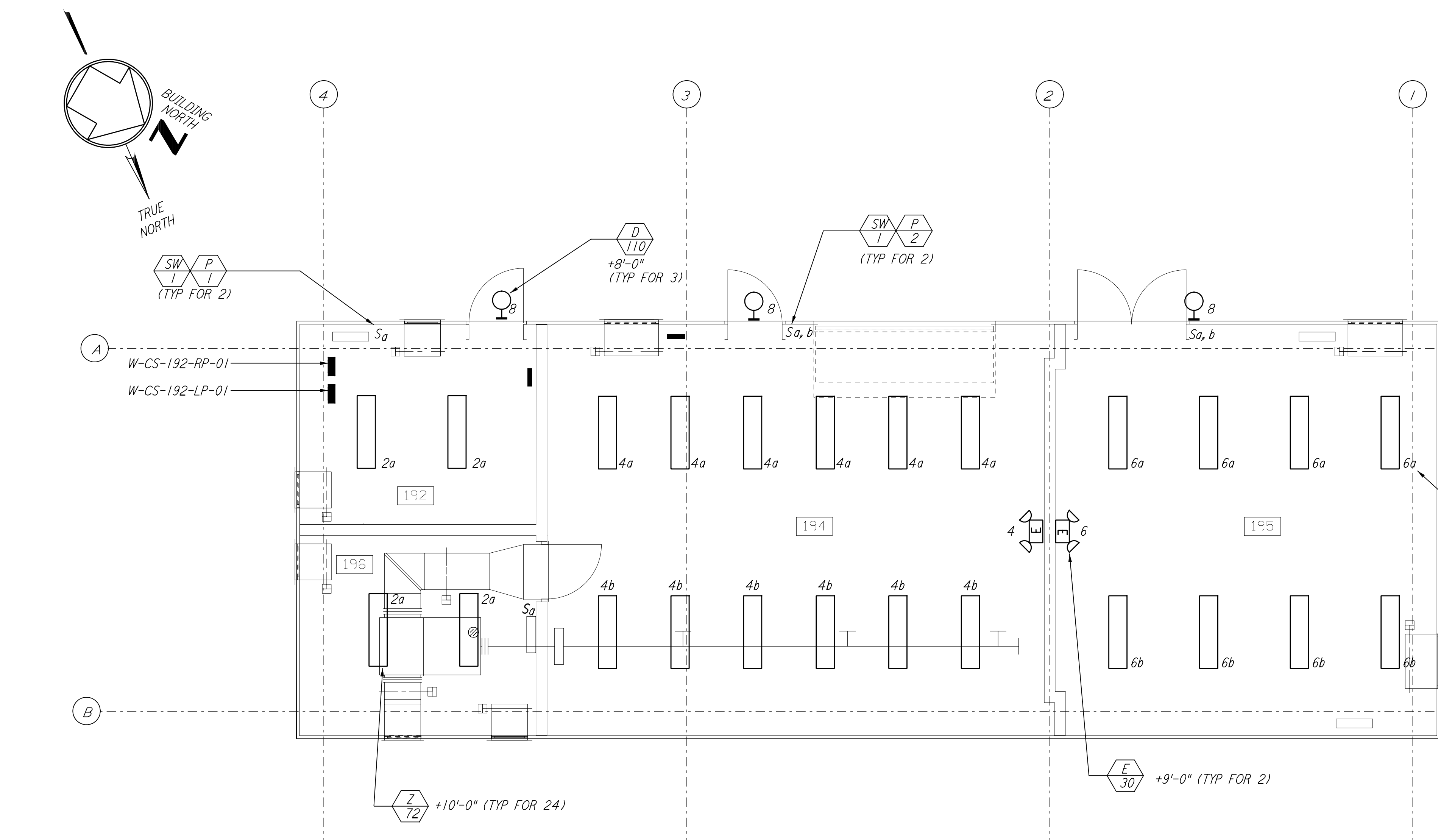


This document and the design it covers are the property of PARSONS. They are loaned only with the borrower's expressed written agreement that they will not be reproduced, copied, loaned, exhibited, or used in any other way, except by written consent from PARSONS to the borrower.



**MAINTENANCE BUILDING POWER PLAN**  
 1/4" = 1'-0" (SEE NOTE 4)



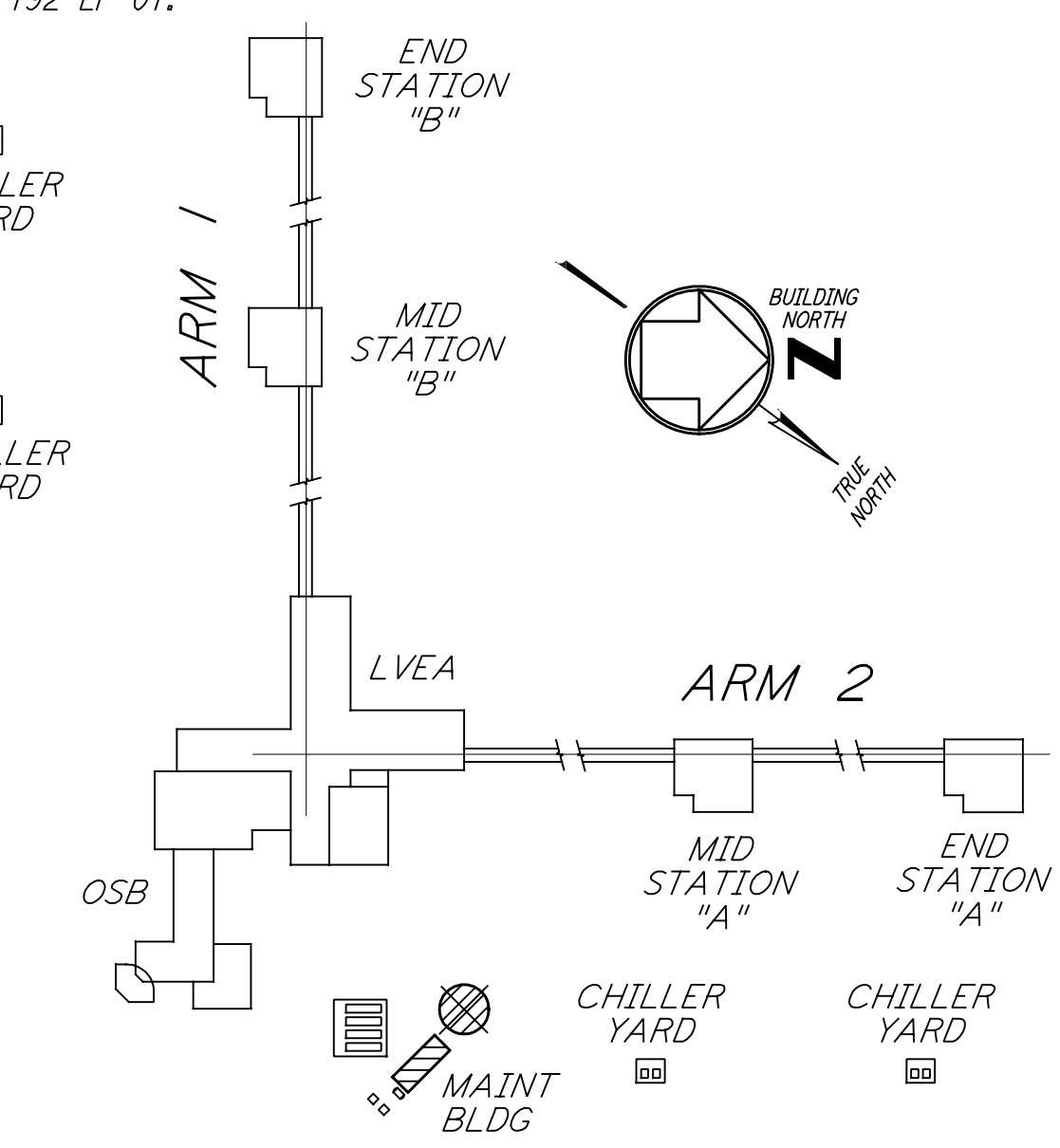
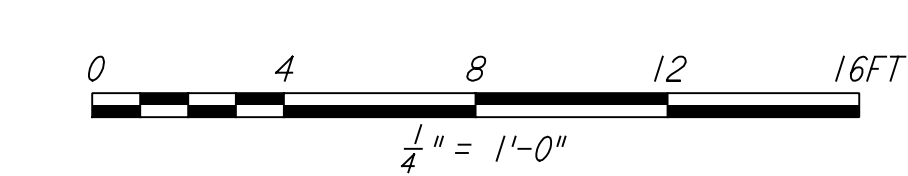
**MAINTENANCE BUILDING LIGHTING PLAN**  
 1/4" = 1'-0" (SEE NOTE 3)

PANEL W-CS-192-RP-01		LOCATION TOP MOUNTING SURFACE		VOLTS 208Y/120V								
FED FROM	CKT #	PHASE	WIRE	FEEDER	MAIN							
W-CS-192-LP-01	1, 3, 5	3	3	3#10&1#12 GND BUS	100A							
CKT	LOAD SERVED	SLOT	POLES	WIRE SIZE	TRIP	VOLT AMPS	PHASE LOAD (VA)	TRIP	WIRE SIZE	POLES	LOAD SERVED	CKT
1	F. W. HEAT TRACE (GF1)	1	1	12	20	500	500	20	12	2	OUTDOOR (GF1)	2
3	P. W. HEAT TRACE (GF1)	3	1	12	20	720	280	20	12	4	RECEPTS RM 192, 196	4
5	AC. AD. CONTROL	5	1	12	20		720	20	12	6	RECEPTS RM 194	6
7	CHILLER YARD 6FI	7	1	12	20	1080		20	12	8	RECEPTS RM 194, 195	8
9	SPARE	9	-	12	20			20	12	10	RECEPTS RM 195	10
11	HY-BAY ROLL UP DOOR	11	1	12	20		200	20	12	12	HVAC CONTROLS	12
TOTAL CONNECTED LOAD (VA)						2300	2180	920				
TOTAL CONNECTED LOAD (AMPS)						5400						

PANEL W-CS-192-LP-01		LOCATION TOP MOUNTING SURFACE		VOLTS 480Y/277V									
FED FROM	CKT #	PHASE	WIRE	FEEDER	MAIN								
W-CS-192-RP-01	TBD	3	4	4#1 & 1#6 GND BUS	100A								
CKT	LOAD SERVED	SLOT	POLES	WIRE SIZE	TRIP	VOLT AMPS	PHASE LOAD (VA)	TRIP	WIRE SIZE	POLES	LOAD SERVED	CKT	
1	W-CS-192-RP-01	1	3	10	30	5000	288	20	12	1	2	LIGHTING RM 192, 196	2
3		-	-	-	-	5000	864	20	12	1	4	LIGHTING RM 194	4
5		-	-	-	-	1000	576	20	12	1	6	LIGHTING RM 195	6
7	HEATER W-CS-195-HT-01	7	1	10	20	2000	330	20	12	1	8	LIGHTING OUTSIDE	8
9	HEATER W-CS-195-HT-02	9	1	10	20	2000	60	20	12	1	10	EMERGENCY LIGHTING	10
11	HEATER W-CS-196-HT-03	11	1	10	20	1500	1500	20	10	1	12	HEATER W-CS-196-HT-04	12
13	DOSING PUMP	13	3	8	30	2100		30	3	14	SPARE	14	
15		-	-	-	-	2100		-	-	-	16	SPARE	16
17		-	-	-	-	2100		-	-	-	18	SPARE	18
19	W-CS-191-AH-05	19	3	12	20	500		20	12	3	20	R.O. UNIT	20
21	W-CS-191-AH-05	21	-	-	-	500		-	-	-	22		22
23	W-CS-191-AH-05	23	-	-	-	500		-	-	-	24		24
TOTAL CONNECTED LOAD (VA)						10224	10530	11182					
TOTAL CONNECTED LOAD (AMPS)						31936							

**NOTES:**

- FOR GENERAL NOTES AND REFERENCE DWG SEE WA-E-103.
- PANEL W-CS-192-RP-01 SHALL BE SQUARE D CLASS 7400 MINI-POWER-ZONE. INTEGRAL 15KVA 3Ø TRANSFORMER, 12-POLE, TYPE GOB BREAKERS.
- ALL CIRCUITS SHOWN ON THE LIGHTING PLAN ARE FROM PANEL W-CS-192-LP-01 UNLESS OTHERWISE NOTED.
- ALL CIRCUITS SHOWN ON THE POWER PLAN ARE FROM PANEL W-CS-192-RP-01 UNLESS OTHERWISE NOTED.
- CIRCUITS SHOWN FEEDING THESE ITEM ARE FROM PANEL W-CS-192-LP-01.



**LIGO-D960402-01-0**

**KEY PLAN**

NO.	DATE	BY	CHKD	ENGR	PROJ	DESCRIPTION
1	6-15-98	J. G.				ISSUED FOR AS-BUILT

NO.	DATE	BY	CHKD	ENGR	PROJ	DESCRIPTION
1	6-25-96	M. M.				ISSUED FOR CONSTRUCTION
2	7-3-96	J. K.				CHECKED
3	7-3-96	K. R.				ENGINEER
4	7-8-96	M. D. W.				PROJ

**AS-BUILT DRAWINGS**

100 WEST WALNUT STREET  
 PASADENA, CALIFORNIA

CALIFORNIA INSTITUTE OF TECHNOLOGY  
 MASSACHUSETTS INSTITUTE OF TECHNOLOGY

LASER INTERFEROMETER  
 GRAVITATIONAL-WAVE OBSERVATORY  
 SITE NO. 1 - HANFORD, WASHINGTON

TITLE	SCALE	PROJECT NUMBER
ELECTRICAL CORNER STATION CHILLER PLANT & MAINT BLDG POWER & LIGHTING PLANS	AS NOTED	8094
SHEET NUMBER	PP150969	WA-E-113

This drawing is the property of PARSONS. It is loaned to you for your use only. It is not to be reproduced, copied, loaned, exhibited, or used in any other way, except by written consent from PARSONS to the borrower.