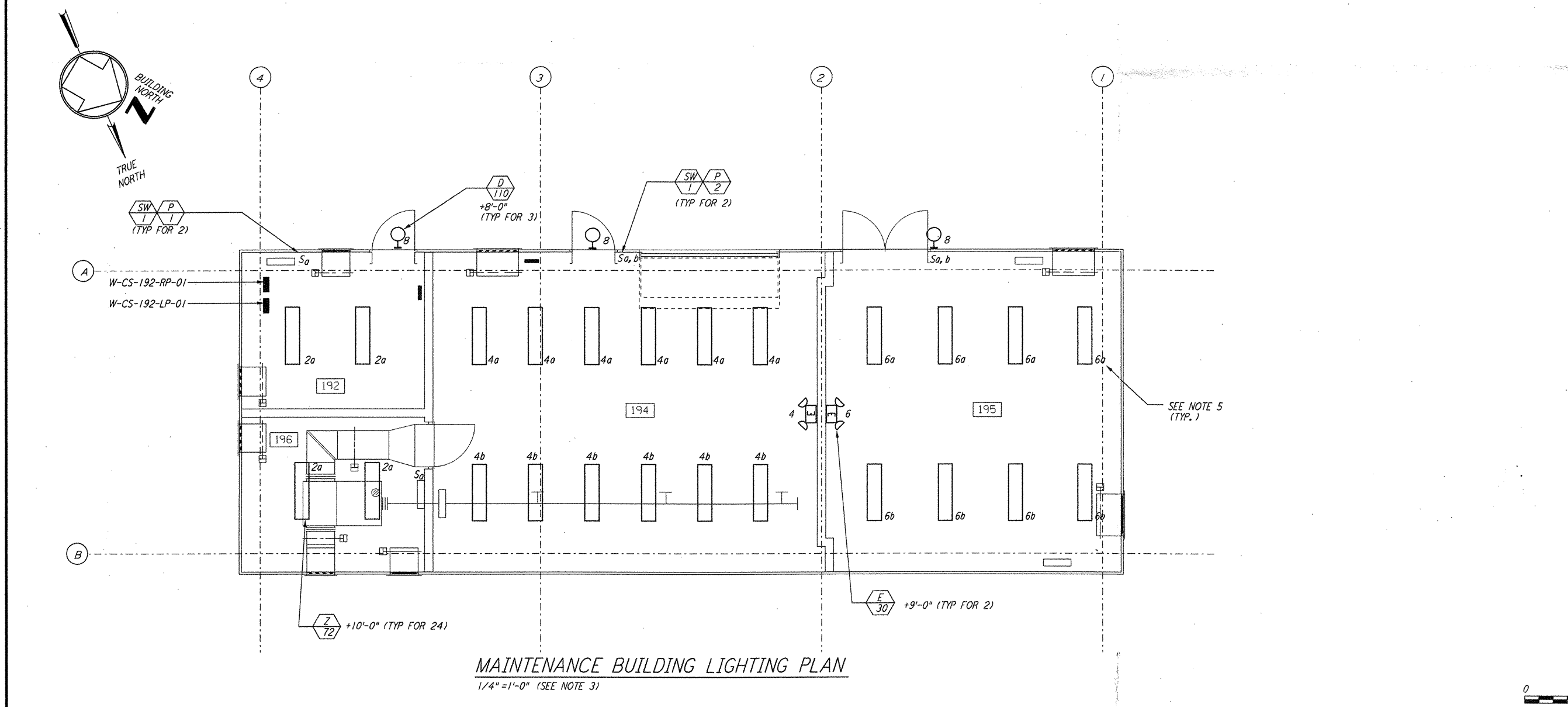


MAINTENANCE BUILDING POWER PLAN
 1/4" = 1'-0" (SEE NOTE 4)

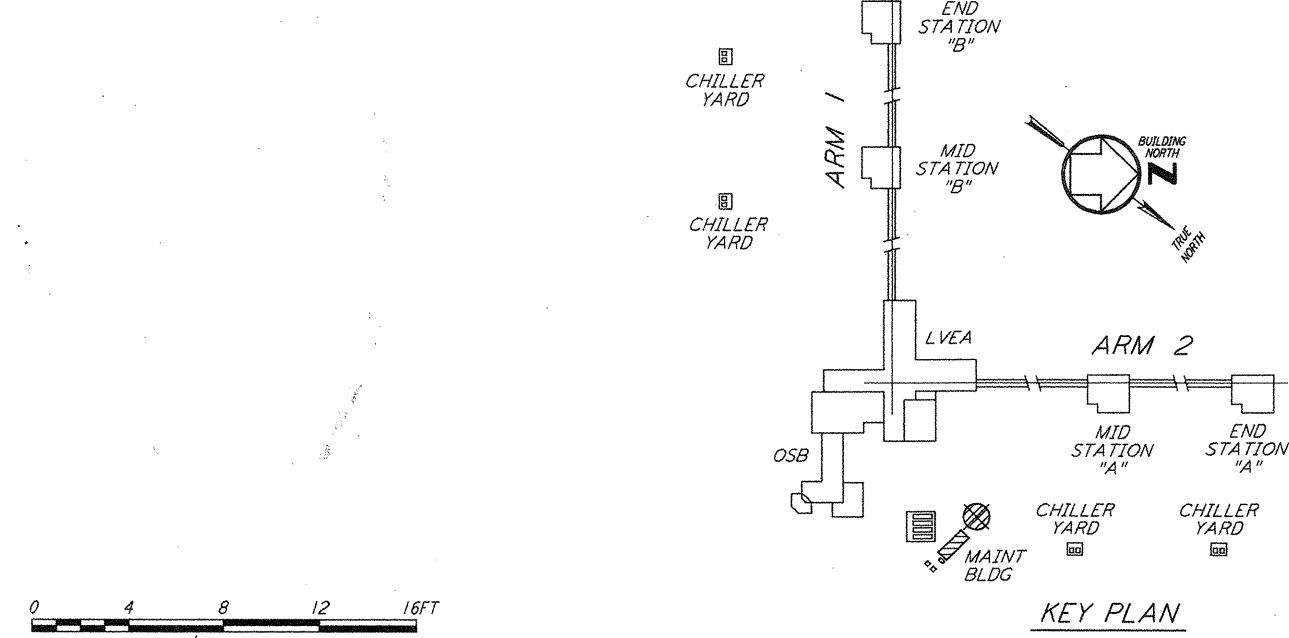


MAINTENANCE BUILDING LIGHTING PLAN
 1/4" = 1'-0" (SEE NOTE 3)

PANEL W-CS-192-RP-01		LOCATION		TOP		MOUNTING SURFACE		VOLTS		
FED FROM	CKT *	PHASE	WIRE	TRIP	WIRE	TRIP	WIRE	TRIP	WIRE	
W-CS-192-LP-01	1, 3, 5	3	3	3	3	3	3	3	3	
CKT	LOAD SERVED	SLOT	POLE	WIRE SIZE	TRIP	VOLT AMPS	PHASE LOAD (VA)	VOLT AMPS	TRIP	
1	F. W. HEAT TRACE (GF1)	1	1	12	20		A B C			
2	F. W. HEAT TRACE (GF1)	3	1	12	20					
3	M.C. HEAT CONTROL	5	1	12	20					
4	CHILLER YARD GF1	7	1	12	20					
5	SPARE	9	-	12	20					
6	HY-BAY ROLL UP DOOR	11	1	12	20					
7	OUTDOOR (GF1)	13	1	12	20					
8	RECEPTS RM 192, 196	15	1	12	20					
9	RECEPTS RM 194	17	1	12	20					
10	RECEPTS RM 194, 195	19	1	12	20					
11	RECEPTS RM 195	21	1	12	20					
12	HYAC CONTROLS	23	1	12	20					
TOTAL							2300	2100	920	
TOTAL CONNECTED LOAD (VA)							5400			
							(AMPS)			

PANEL W-CS-192-LP-01		LOCATION		TOP		MOUNTING SURFACE		VOLTS		
FED FROM	CKT *	PHASE	WIRE	TRIP	WIRE	TRIP	WIRE	TRIP	WIRE	
W-CS-192-RP-01	T80	3	4	4	4	4	4	4	4	
CKT	LOAD SERVED	SLOT	POLE	WIRE SIZE	TRIP	VOLT AMPS	PHASE LOAD (VA)	VOLT AMPS	TRIP	
1	W-CS-192-RP-01	1	3	10	30		5000			
2	LIGHTING RM 192, 196	2	1	10	30		5000			
3	LIGHTING RM 194	4	1	10	30		5000			
4	LIGHTING RM 195	5	1	10	30		5000			
5	HEATER W-CS-195-HT-01	7	1	10	20		2000			
6	HEATER W-CS-195-HT-02	9	1	10	20		2000			
7	HEATER W-CS-196-HT-03	11	1	10	20		2000			
8	SPARE	13	3	8	30		2100			
9	SPARE	15	-	8	-					
10	SPARE	17	-	8	-					
11	R.O. UNIT	19	3	12	20		500			
12	SPARE	21	-	-	-					
13	SPARE	23	-	-	-					
TOTAL							18224	18530	11182	
TOTAL CONNECTED LOAD (VA)							31936			
							(AMPS)			

- NOTES:**
- FOR GENERAL NOTES AND REFERENCE DWG SEE WA-E-103.
 - PANEL W-CS-192-RP-01 SHALL BE SQUARE D CLASS 7400 MINI-POWER-ZONE INTEGRAL 15KVA 3Ø TRANSFORMER, 12-POLE, TYPE OOB BREAKERS.
 - ALL CIRCUITS SHOWN ON THE LIGHTING PLAN ARE FROM PANEL W-CS-192-LP-01.
 - ALL CIRCUITS SHOWN ON THE POWER PLAN ARE FROM PANEL W-CS-192-RP-01 UNLESS OTHERWISE NOTED.
 - CIRCUITS SHOWN FEEDING THESE ITEM ARE FROM PANEL W-CS-192-LP-01.



KEY PLAN
 LIGO-D960402-01-0

NO.	DATE	BY	CHKD	ENGR	PROJ	DESCRIPTION
1	6-15-98	J.G.				ISSUED FOR AS-BUILT

ISSUED FOR CONSTRUCTION	DATE
DRAWN	M. M. 6-25-96
CHECKED	J. K. 7-3-96
ENGINEER	K. P. 7-3-96
PROJ	M. D. W. 7-8-96

AS-BUILT DRAWINGS

PARSONS
 100 WEST WALNUT STREET
 PASADENA, CALIFORNIA

LIGO
 CALIFORNIA INSTITUTE OF TECHNOLOGY
 MASSACHUSETTS INSTITUTE OF TECHNOLOGY

LASER INTERFEROMETER
 GRAVITATIONAL-WAVE OBSERVATORY
 SITE NO. 1 - HANFORD, WASHINGTON

**ELECTRICAL CORNER STATION
 CHILLER PLANT & MAINT
 BLDG POWER & LIGHTING PLANS**

AS NOTED
 CONTRACT NUMBER: PPI150969
 PROJECT NUMBER: 8094

WA-E-113

This document and the design it covers are the property of PARSONS. They are loaned only with the borrower's expressed written agreement that they will not be reproduced, copied, loaned, exhibited, or used in any other way, except by written consent from PARSONS to the borrower.

Thu Jul 09 13:30:57 1998 C:\PLOT\Q:\E\3-V\96B2.DOC 52085 K:\V\96B2\ee\13a.prf LIGOWAF3.BOR