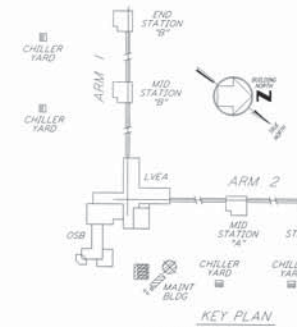
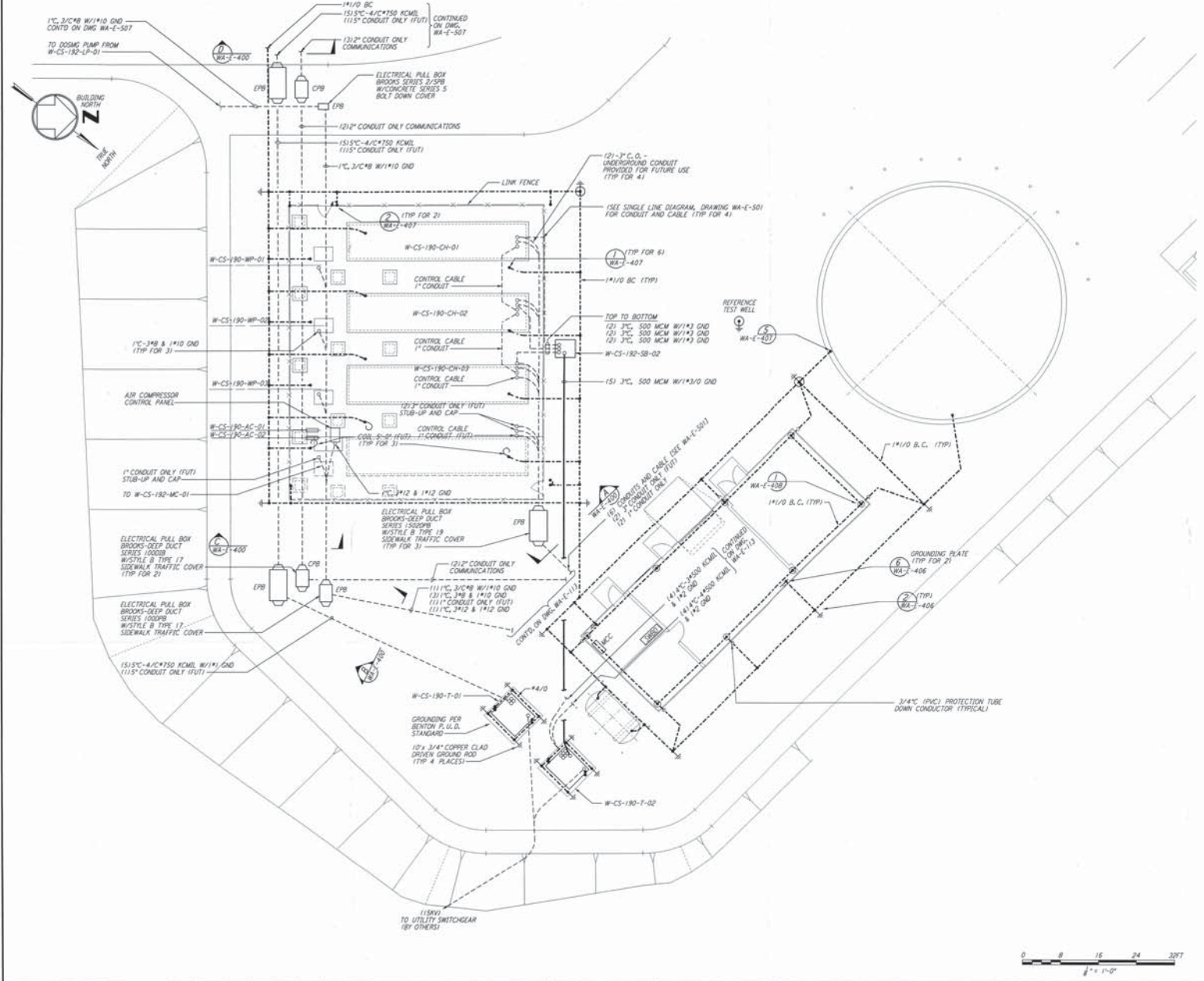


- NOTES:**
1. FOR GENERAL NOTES SEE DWG. WA-E-101.
 2. NOT USED
 3. NOT USED
 4. FOR STANDARD SYMBOLS, ABBREVIATIONS AND ACRONYMS SEE DWG. WA-E-001.
 5. FOR INSTALLATION DETAILS SEE DWG. WA-E-405 THRU 408.
 6. ALL RUNS ARE SHOWN DIAGRAMMATICALLY ONLY. CONTRACTOR SHALL COORDINATE WITH OTHER DISCIPLINES TO AVOID CONFLICT.



This document and the design it covers are the property of PARSONS. It is to be used only for the project and site for which it was prepared. It is not to be reproduced, copied, loaned, exhibited, or used in any way without the written consent from PARSONS.

REVISIONS 1 8-15-98 J.G. [initials] [initials] ISSUED FOR AS-BUILT		ISSUED FOR CONSTRUCTION DRAWN M.M. 6-23-96 CHECKED J.K. 7-3-96 ENGINEER K.R. 7-3-96 PROJ. M.D.W. 7-8-96	
DRAWING NO.	DESCRIPTION	AS-BUILT DRAWINGS	

PARSONS

100 WEST WALNUT STREET
 PASADENA, CALIFORNIA

LIGO

CALIFORNIA INSTITUTE OF TECHNOLOGY
 MASSACHUSETTS INSTITUTE OF TECHNOLOGY

LASER INTERFEROMETER
 GRAVITATIONAL-WAVE OBSERVATORY
 SITE NO. 1 - HANFORD, WASHINGTON

ELECTRICAL CORNER STATION
 CHILLER PLANT &
 MAINT BLDG GROUNDING PLAN

AS NOTED PPI 50969 8094
WA-E-112