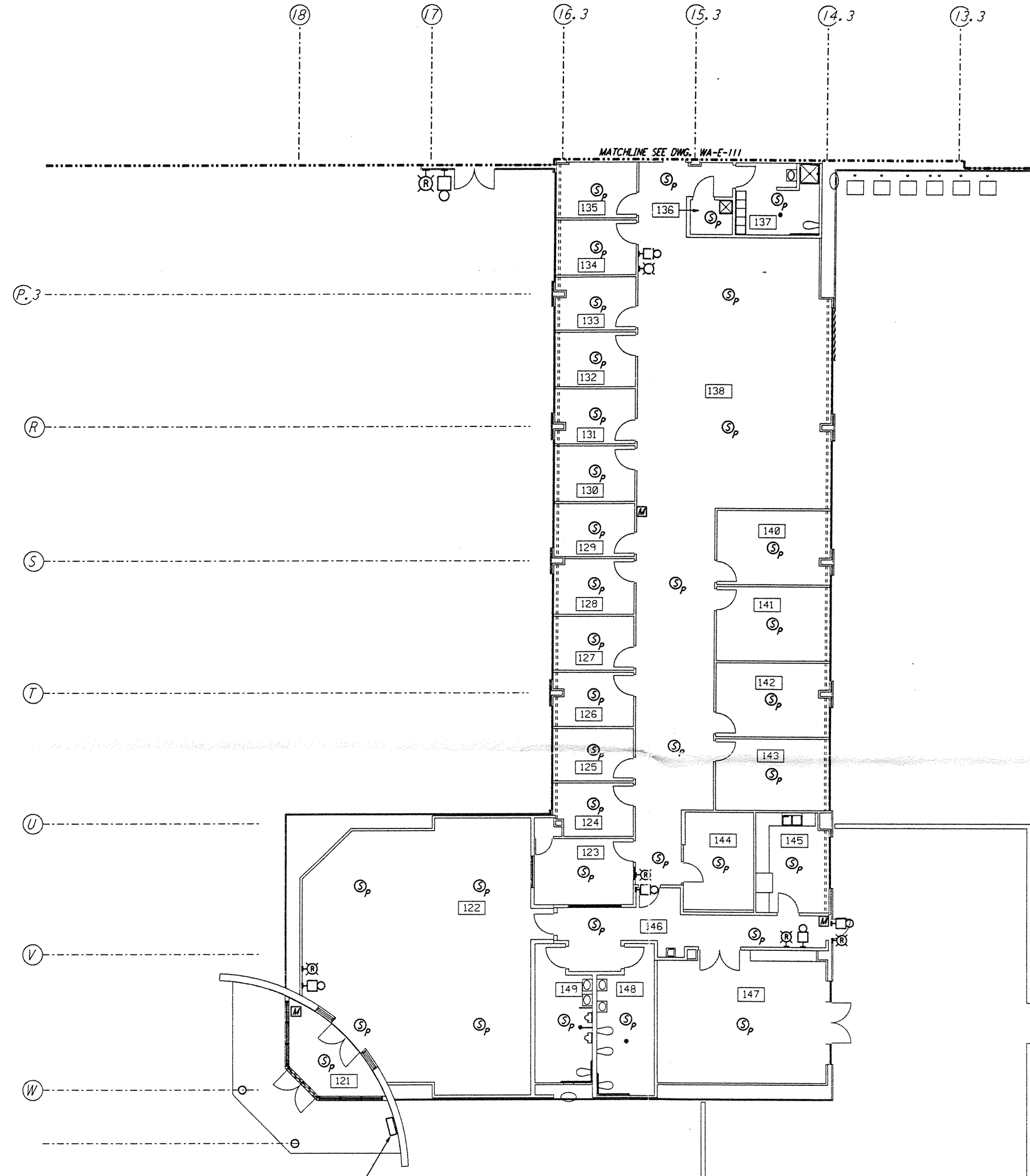
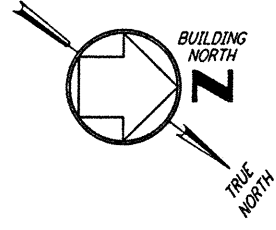


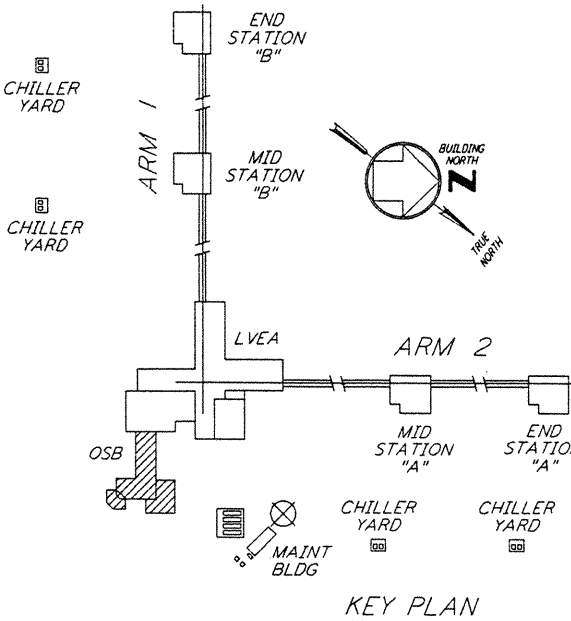
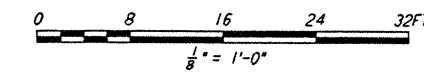
**NOTES:**

1. FOR PLAN SYMBOLS SEE DWG WA-E-002
2. WIRING FOR FIRE DETECTION SHALL BE CLASS "A", FOR FIRE ALARM DEVICES SHALL BE CLASS "B".
3. DUCT MOUNTED SMOKE DETECTORS SHALL BE PROVIDED WITH AN AUXILIARY RELAY CONTACT (N.C.) FOR EQUIPMENT SHUT-DOWN.
4. NOT USED.
5. COORDINATE AHU LOCATIONS AND DUCT MOUNTED SMOKE DETECTORS.

This document and the design it covers are the property of PARSONS. They are loaned only with the borrower's expressed written agreement that they will not be reproduced, copied, loaned, exhibited, or used in any other way, except by written consent from PARSONS to the borrower.



RFAR BY HANFORD SITE TELECOMMUNICATIONS GROUP



DRAWING NO.	DESCRIPTION	NO.	DATE	BY	CHKD	ENGR	PROJ	DESCRIPTION

	<b>DRAWN</b> M.M.	6-25-96
	<b>CHECKED</b> S.S.	7-3-96
	<b>ENGINEER</b> T.J.	7-3-96
	<b>PROJ</b> MWJ	7/2/96



**PARSONS**

100 WEST WALNUT STREET  
 PASADENA, CALIFORNIA

**LIGO**

CALIFORNIA INSTITUTE OF TECHNOLOGY  
 MASSACHUSETTS INSTITUTE OF TECHNOLOGY

LASER INTERFEROMETER  
 GRAVITATIONAL-WAVE OBSERVATORY  
 SITE NO. 1 - HANFORD, WASHINGTON

<b>ELECTRICAL CORNER STATION OSB OFFICE AREA FIRE DET &amp; SECURITY PLAN</b>	SCALE AS NOTED	CONTRACT NUMBER PP150969	PROJECT NUMBER 8094
	<b>WA-E-110</b>		