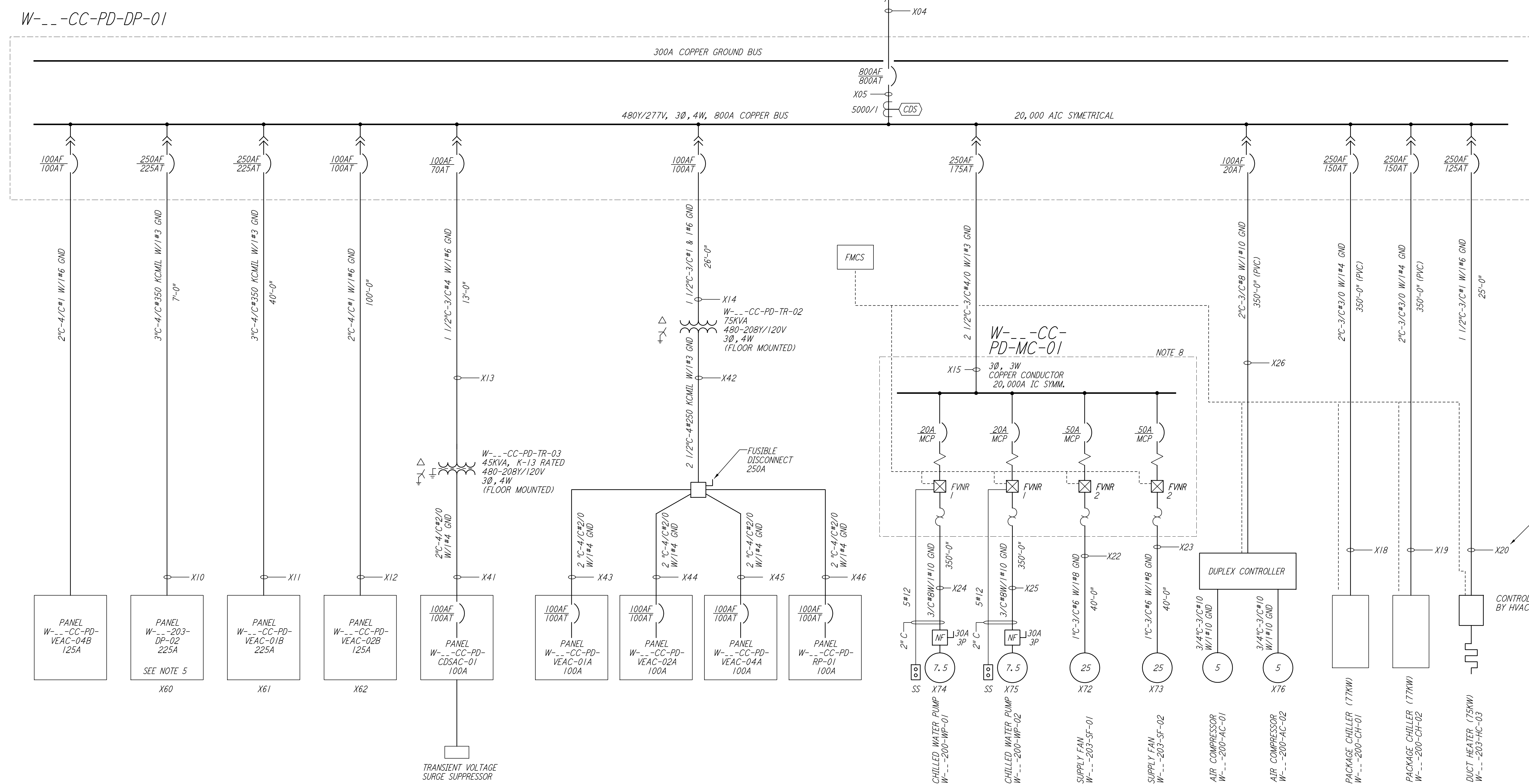
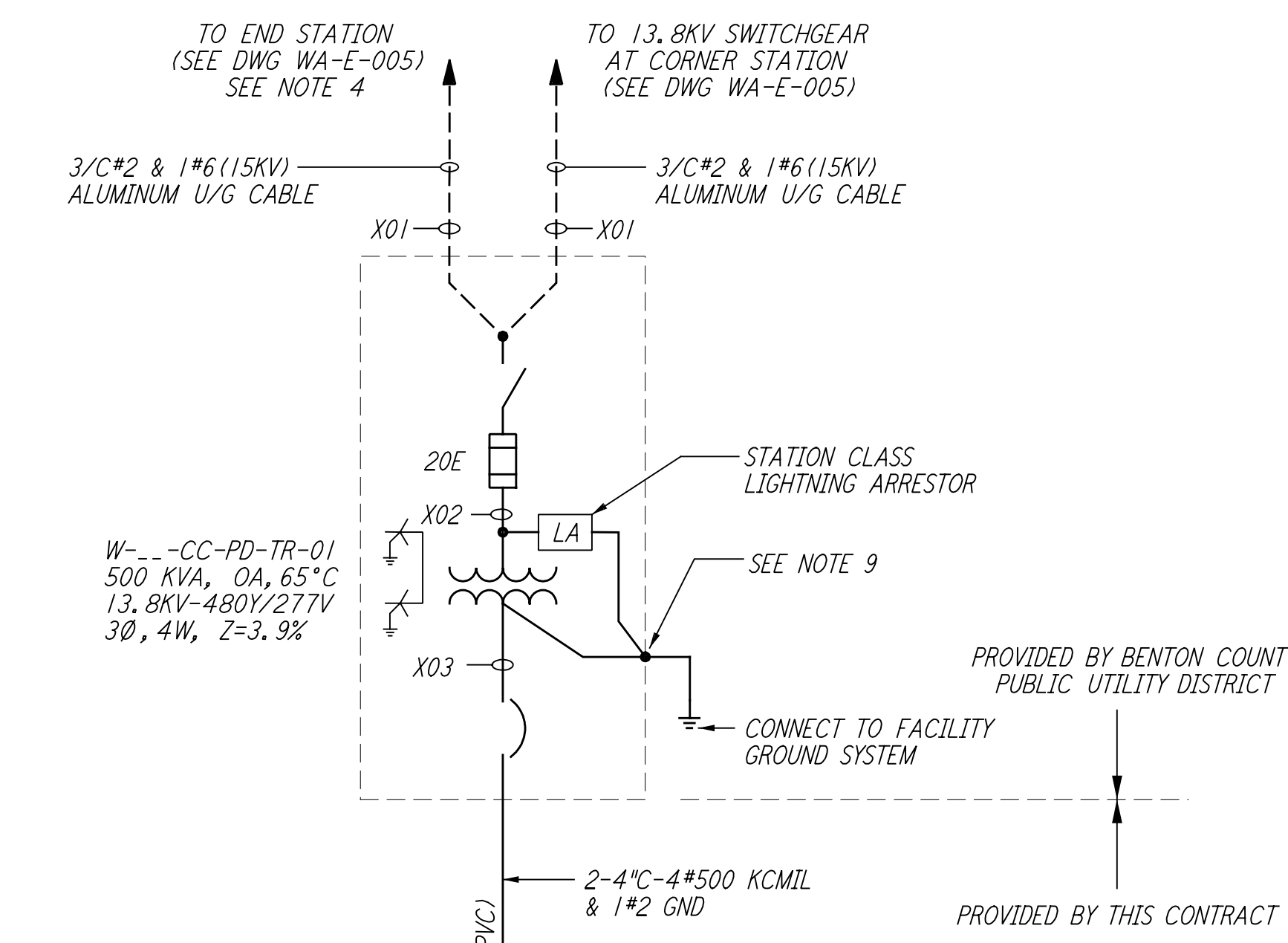


NOTES:

- FOR LEGEND AND GENERAL NOTES SEE DWG WA-E-005.
- ALL CONDUCTORS ARE COPPER UNLESS OTHERWISE NOTED.
- ALL TRANSFORMER WINDINGS ARE ALUMINUM UNLESS OTHERWISE NOTED.
- 13.8KV CABLES ARE SHOWN FOR TYPICAL MID STATION. THE END STATION IS SIMILAR EXCEPT, A SINGLE CABLE CONNECTS TO TRANSFORMER PRIMARY.
- PANEL DP-02 SHALL BE PROVIDED WITH REMOTE CONTROLLED CIRCUIT BREAKERS FOR ALL LIGHTING CIRCUITS (9 CIRCUITS). PROVIDE 3 SPARE SINGLE-POLE 20A REMOTE CONTROL CIRCUIT BREAKERS. REMOTE CONTROL TRANSCEIVER AND BREAKERS SHALL BE SQUARE D POWERLINK OR APPROVAL EQUAL. TRANSCEIVER SHALL BE COMPATIBLE WITH THE FMCS IN SPECIFICATION SECTION 13000.
- ALL CIRCUIT BREAKERS SHALL BE PROVIDED WITH LOCKING/LOCKABLE ACCESSORIES TO ENSURE THAT CIRCUITS ARE ENERGIZED BY AUTHORIZED PERSONNEL ONLY.
- DISTRIBUTION AND LIGHTING PANELS SHALL BE FURNISHED WITH LOCKABLE DOORS. CIRCUIT BREAKERS SHALL BE PROVIDED WITH LOCKING/LOCKABLE ACCESSORIES TO ENSURE THAT CIRCUITS ARE ENERGIZED BY AUTHORIZED PERSONNEL ONLY.
- CUTLER HAMMER/ WESTINGHOUSE MULTI-PAK GROUP CONTROL TYPE MOTOR CONTROL CENTER.
- SEE DWG. WA-E-504 FOR TYPICAL TRANSFORMER GROUNDING DETAIL.



ANALYTIC STUDY NOTES:

- X12 REPRESENTS THE ANALYTIC NODE NUMBER, AND CORRESPONDS WITH THE ETAP VERSION 7.301 ANALYTIC STUDY.

NODE NUMBERING SCHEDULE		
BUILDING	DESIGNATOR	X
MID, ARM A	MA	3
END, ARM A	EA	4
MID, ARM B	MB	5
END, ARM B	EB	6

REPLACE X WITH THE NUMBER AT RIGHT TO IDENTIFY THE SPECIFIC NODE IN A SPECIFIC BUILDING.

LIGO-D960393-02-0

This document and the design it covers are the property of PARSONS. They are loaned only with the borrower's expressed written agreement that they will not be reproduced, copied, loaned, exhibited, or used in any other way, except by written consent from PARSONS to the borrower.

This document and the design it covers are the property of PARSONS. They are loaned only with the borrower's expressed written agreement that they will not be reproduced, copied, loaned, exhibited, or used in any other way, except by written consent from PARSONS to the borrower.

NO.	DATE	BY	CHKD	ENGR	PROJ	DESCRIPTION
2	6-15-98	J. G.				ISSUED FOR AS-BUILT
1	3-21-97	J. G.	K. R.	K. R.	TDM	GENERAL REVISIONS

ISSUED FOR CONSTRUCTION		
DRAWN	M. M.	6-25-96
CHECKED	J. K.	7-3-96
ENGINEER	K. R.	7-3-96
PROJ	M. D. W.	7-8-96

AS-BUILT DRAWINGS

100 WEST WALNUT STREET
PASADENA, CALIFORNIA

CALIFORNIA INSTITUTE OF TECHNOLOGY
MASSACHUSETTS INSTITUTE OF TECHNOLOGY

LASER INTERFEROMETER
GRAVITATIONAL-WAVE OBSERVATORY
SITE NO. 1 - HANFORD, WASHINGTON

TITLE	SCALE	PROJECT NUMBER
ELECTRICAL TYPICAL END OR MID STATION SINGLE LINE DIAGRAM	AS NOTED	PP150969 8094
SHEET NUMBER	REVISIONS	
WA-E-008		