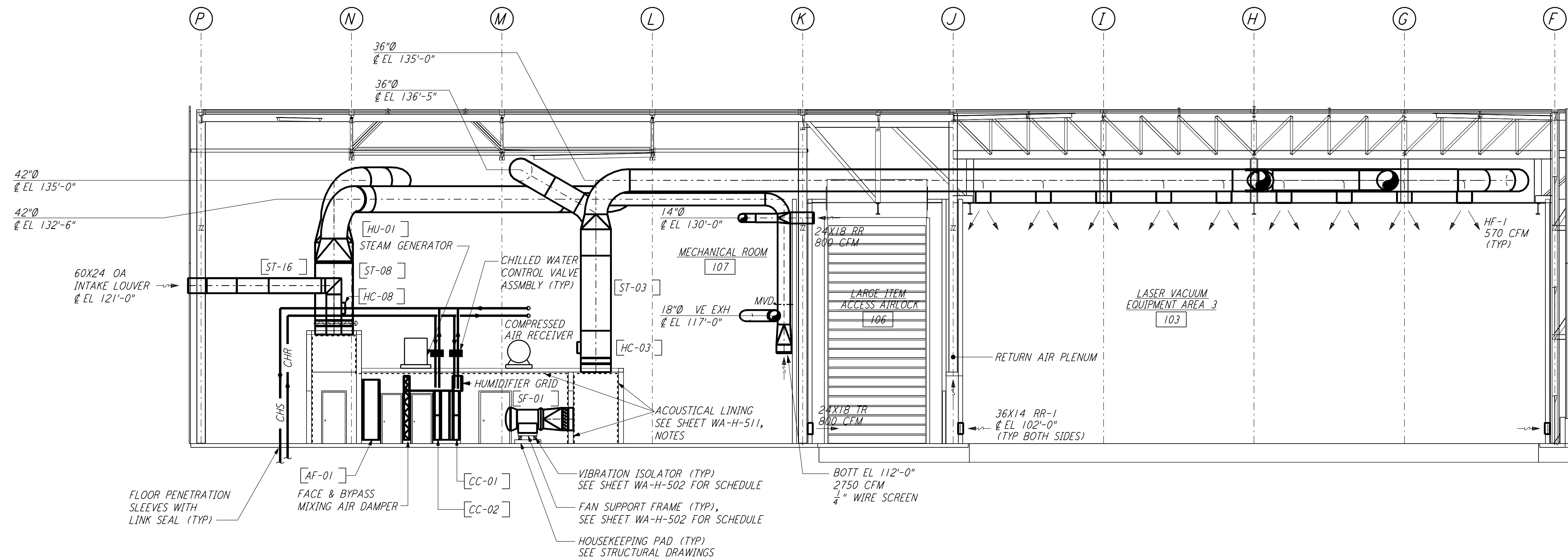
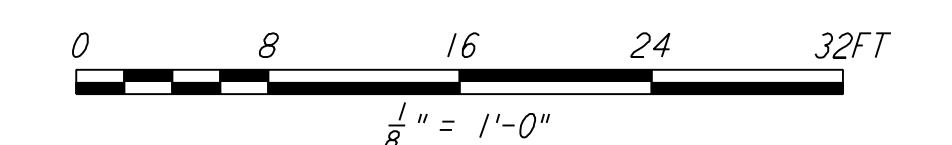


NOTES:

1. FOR LEGEND, ABBREVIATIONS AND GENERAL NOTES SEE SHEET WA-H-001 AND WA-H-002.
2. SEE SHEET WA-H-551 FOR APPLICABLE NOTES.
3. PERFORATED DUCT LINER INSIDE THE SUPPLY AIR PLENUM OF AH-01 AND AH-02 WILL BE CORRUGATED TYPE.



SECTION B
 REF WA-H-552 WA-H-511
 1/8" = 1'-0"



LIGO-D960387-01-O

LASER INTERFEROMETER
 GRAVITATIONAL-WAVE OBSERVATORY
 SITE NO. 1 - HANFORD, WASHINGTON

TITLE	SCALE	CONTRACT NUMBER	PROJECT NUMBER
HVAC CORNER STATION SECTIONS SHEET 2	AS NOTED	PP150969	8094
SHEET NUMBER		REVISIONS	
WA-H-552		[REVISIONS]	

LIGO

CALIFORNIA INSTITUTE OF TECHNOLOGY
 MASSACHUSETTS INSTITUTE OF TECHNOLOGY

PARSONS

100 WEST WALNUT STREET
 PASADENA, CALIFORNIA

ISSUED FOR CONSTRUCTION

DRAWN	CLP	6-24-96
CHECKED		
ENGINEER		
PROJ		

AS-BUILT DRAWINGS

NO.	DATE	BY	CHKD	ENGR	PROJ	DESCRIPTION
1	5-15-98	CP				ISSUED FOR AS-BUILT

not be reproduced, copied, loaned, exhibited, or used in any other way, except by written consent from PARSONS to the borrower.

This document and the design it covers are the property of PARSONS. They are loaned only with the borrower's expressed written agreement that they will

Wed Sep 9 16:28:21 1998 c:\plott\ref\33-30.dwg H:\DDESIGN\3092\W0552.PRF