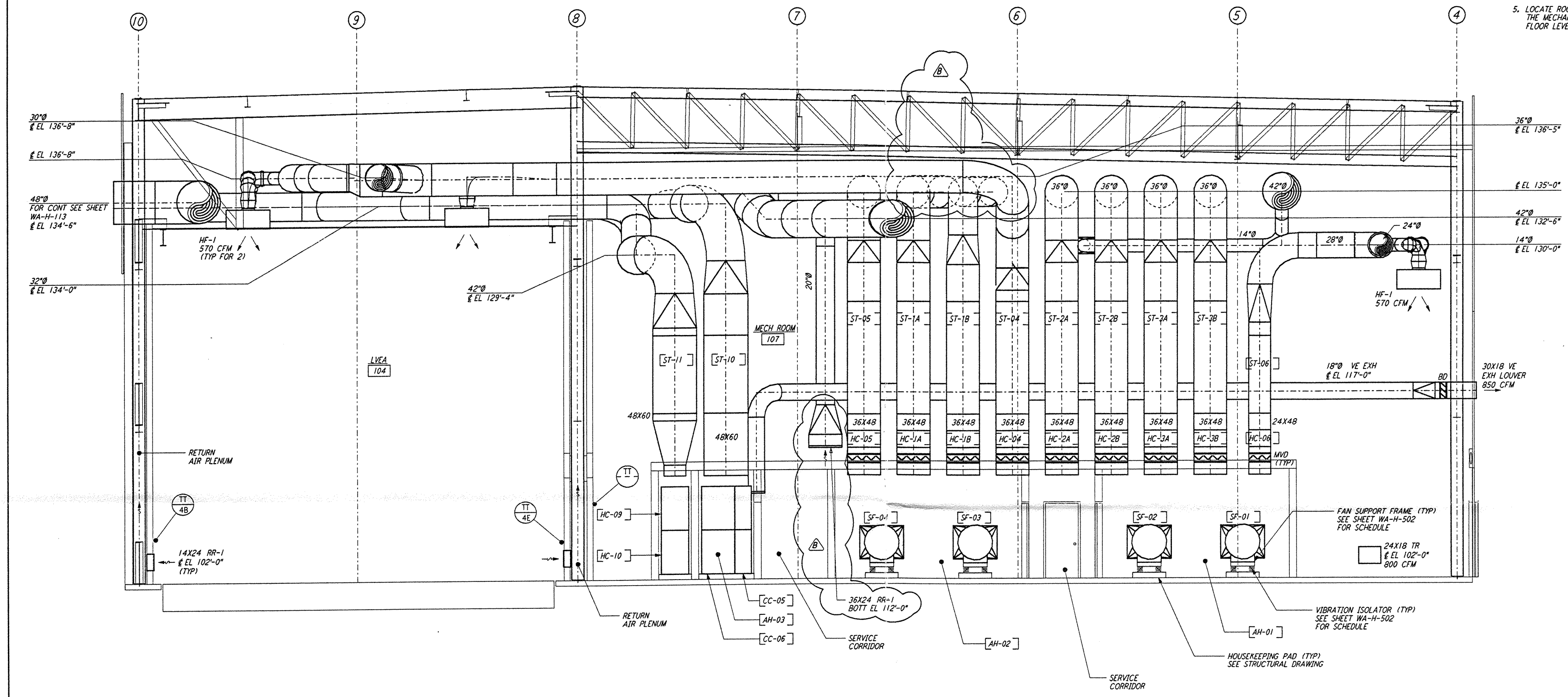
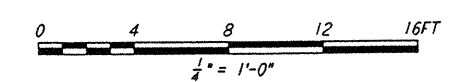


NOTES:

1. FOR LEGEND, ABBREVIATIONS AND GENERAL NOTES SEE SHEETS WA-H-001 AND WA-H-002.
2. PROVIDE HIGH PRESSURE FLEX CONNECTION AT THE POINT OF CONNECTION OF DUCTS AND THE AIR HANDLING UNITS.
3. SEE FLOOR PLAN (SHEET WA-H-521) FOR LOCATION OF COMPRESSED AIR RECEIVER AND HUMIDIFIERS ABOVE THE AIR HANDLING UNITS.
4. SEE FLOOR PLAN NOTES FOR DUCT INSULATION.
5. LOCATE ROOM TEMPERATURE SENSOR / TRANSMITTER FOR THE MECHANICAL ROOM AT 4'-6" ABOVE FINISHED FLOOR LEVEL.



SECTION A REF
 1/4" = 1'-0" WA-H-551 WA-H-511



This document and the design it covers are the property of PARSONS. They are loaned only with the borrower's expressed written agreement that they will not be reproduced, copied, loaned, exhibited, or used in any other way, except by written consent from PARSONS to the borrower.

NO.	DATE	BY	CHKD	ENGR	PROJ	DESCRIPTION
B	5-22-96	CLP	MM	MM	MM	BID ADDENDUM #2
A	4-19-96	CLP	ME	AA	TOM	FINAL DESIGN REVIEW & BID

DRAWN	CLP
CHECKED	
ENGINEER	
PROJ	

PARSONS
 100 WEST WALNUT STREET
 PASADENA, CALIFORNIA

LIGO
 CALIFORNIA INSTITUTE OF TECHNOLOGY
 MASSACHUSETTS INSTITUTE OF TECHNOLOGY

LASER INTERFEROMETER
 GRAVITATIONAL-WAVE OBSERVATORY
 SITE NO. 1 - HANFORD, WASHINGTON

TITLE: HVAC CORNER STATION SECTIONS SHEET I

SCALE: AS NOTED CONTRACT NUMBER: PPI50969 PROJECT NUMBER: 8094

SHEET NUMBER: **WA-H-551** REVISIONS: A

LIGO-D960386-B-0

LIGOWF3.BDR