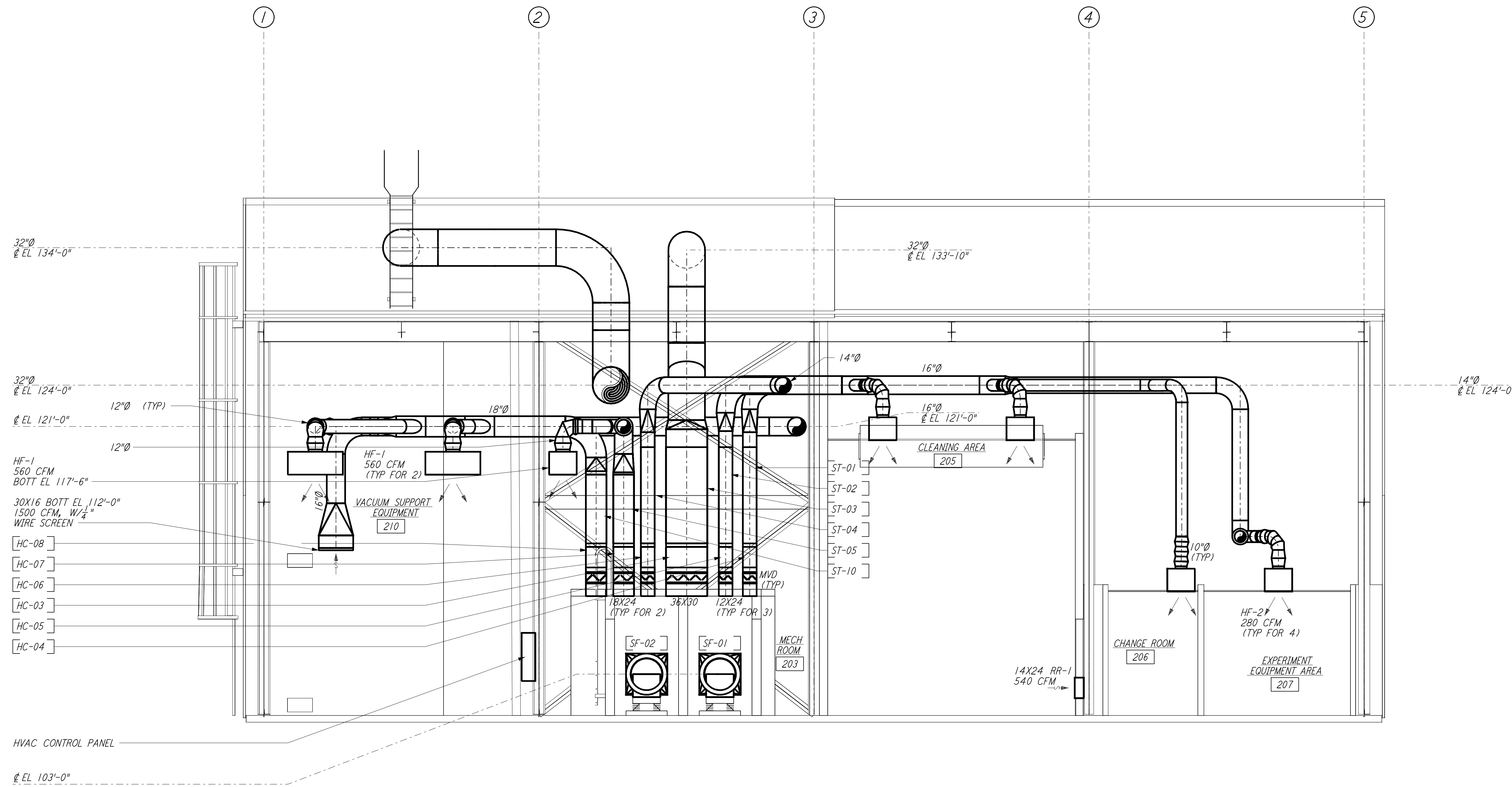


NOTES:

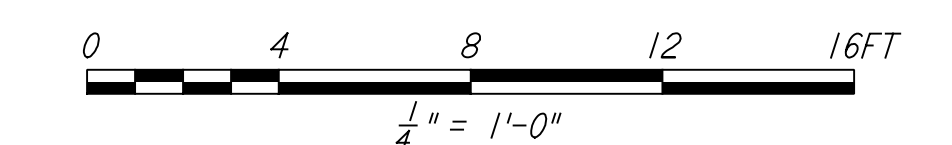
1. FOR LEGEND, ABBREVIATIONS AND GENERAL NOTES SEE SHEETS WA-H-001 AND WA-H-002.



not be reproduced, copied, loaned, exhibited, or used in any other way, except by written consent from PARSONS to the borrower.

This document and the design it covers are the property of PARSONS. They are loaned only with the borrower's expressed written agreement that they will

SECTION B REF
 1/4" = 1'-0" WA-H-242 WA-H-211



LIGO-D960369-01-0

| NO. | DATE | BY | CHKD | ENGR | PROJ | DESCRIPTION |
|-----|---------|----|------|------|------|---------------------|
| 1 | 5-15-98 | CP | | | | ISSUED FOR AS-BUILT |

AS-BUILT DRAWINGS

ISSUED FOR CONSTRUCTION
 DRAWN CLP 6-24-96
 CHECKED
 ENGINEER
 PROJ

PARSONS
 100 WEST WALNUT STREET
 PASADENA, CALIFORNIA

LIGO
 CALIFORNIA INSTITUTE OF TECHNOLOGY
 MASSACHUSETTS INSTITUTE OF TECHNOLOGY

LASER INTERFEROMETER
 GRAVITATIONAL-WAVE OBSERVATORY
 SITE NO. 1 - HANFORD, WASHINGTON

| | | |
|-----------------|----------|-----------|
| AS NOTED | PP150969 | 8094 |
| SHEET NUMBER | | REVISIONS |
| WA-H-242 | | |

HVAC
 MID & END STATIONS
 SECTIONS SHEET 2

The Rep. 3 10/10/14 10:08 AM C:\Users\m\OneDrive\Documents\242.dwg P:\DWG\ENR\ENR242.dwg