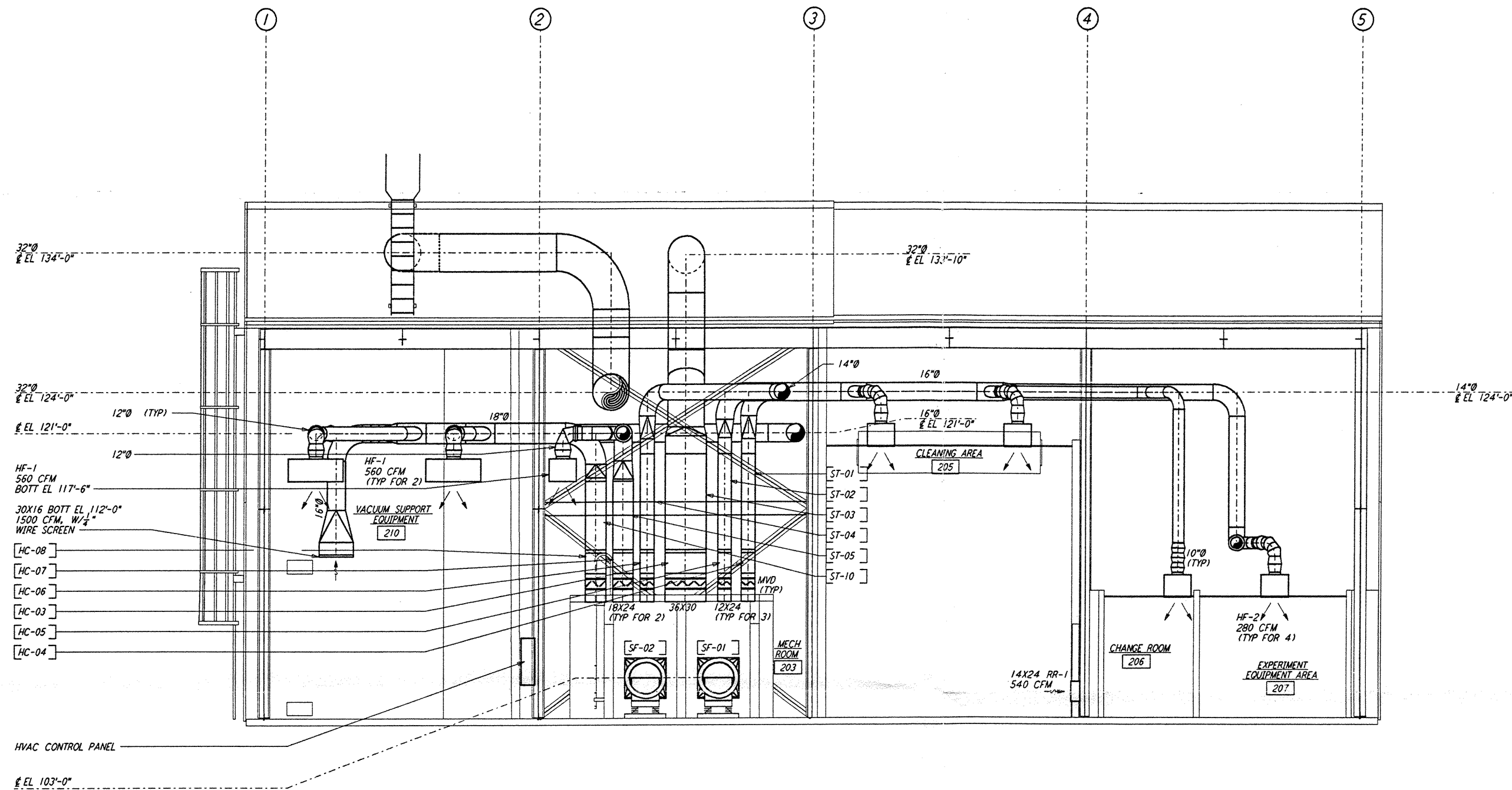
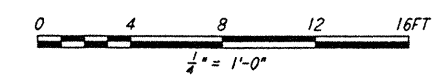


NOTES:

1. FOR LEGEND, ABBREVIATIONS AND GENERAL NOTES SEE SHEETS
 WA-H-001 AND WA-H-002.



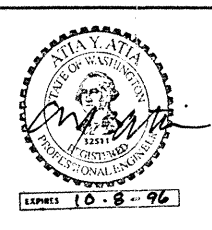
SECTION B REF
 1/2" = 1'-0" WA-H-242 WA-H-211



This document and the design it covers are the property of PARSONS. They are loaned only with the borrower's expressed written agreement that they will not be reproduced, copied, loaned, exhibited, or used in any other way, except by written consent from PARSONS to the borrower.

NO.	DATE	BY	CHKD	ENGR	PROJ	DESCRIPTION

ISSUED FOR CONSTRUCTION	CLP	6-24-96
DRAWN	CLP	6-24-96
CHECKED	AA	7/3/96
ENGINEER	AA	7/3/96
PROJ	AA	7/8/96



PARSONS
 100 WEST WALNUT STREET
 PASADENA, CALIFORNIA

LIGO
 CALIFORNIA INSTITUTE OF TECHNOLOGY
 MASSACHUSETTS INSTITUTE OF TECHNOLOGY

LASER INTERFEROMETER
 GRAVITATIONAL-WAVE OBSERVATORY
 SITE NO. 1 - HANFORD, WASHINGTON

TITLE	SCALE	CONTRACT NUMBER	PROJECT NUMBER
HVAC MID & END STATIONS SECTIONS SHEET 2	AS NOTED	PP150969	8094
SHEET NUMBER		PROVISION	
WA-H-242			