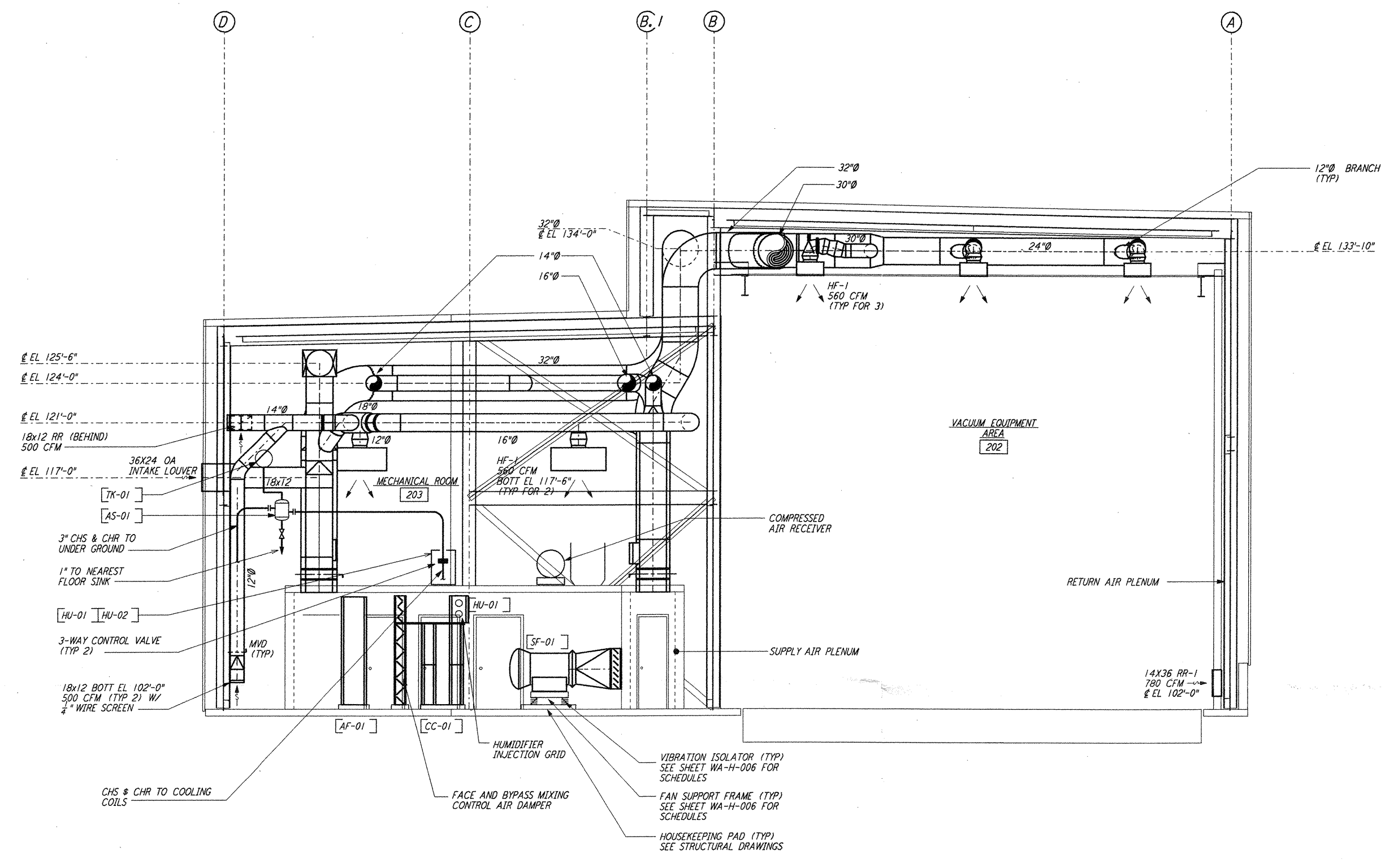
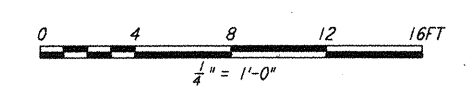


**NOTES:**

1. FOR LEGEND, ABBREVIATIONS AND GENERAL NOTES SEE SHEETS WA-H-001 AND WA-H-002.
2. PROVIDE HIGH PRESSURE FLEX CONNECTIONS AT THE POINT OF CONNECTION OF DUCTS AND THE AIR HANDLING UNITS.
3. SEE FLOOR PLANS FOR DUCT INSULATION NOTES.
4. LOCATE ROOM TEMPERATURE SENSOR/TRANSMITTER FOR THE MECHANICAL ROOM AT 4'-6" ABOVE FINISHED FLOOR LEVEL.
5. WHERE PIPES PENETRATE FLOOR SLAB, PROVIDE STEEL SLEEVE AND LINK SEAL.



SECTION A REF  
 1/4" = 1'-0" WA-H-241 WA-H-211



not be reproduced, copied, loaned, exhibited, or used in any other way, except by written consent from PARSONS to the borrower.

This document and the design it covers are the property of PARSONS. They are loaned only with the borrower's expressed written agreement that they will

NO.	DATE	BY	CHKD	ENGR	PROJ	DESCRIPTION
1	5-15-98	CP	AA	AA		ISSUED FOR AS-BUILT

ISSUED FOR CONSTRUCTION			
DRAWN	CLP	6-24-96	
CHECKED	ME	7-3-96	
ENGINEER	AA	7-3-96	
PROJ	MDW	7-8-96	

**AS-BUILT DRAWINGS**

**PARSONS**  
 100 WEST WALNUT STREET  
 PASADENA, CALIFORNIA

**LIGO**  
 CALIFORNIA INSTITUTE OF TECHNOLOGY  
 MASSACHUSETTS INSTITUTE OF TECHNOLOGY

**LIGO-D960368-01-0**  
 LASER INTERFEROMETER  
 GRAVITATIONAL-WAVE OBSERVATORY  
 SITE NO. 1 - HANFORD, WASHINGTON

TITLE	SCALE	CONTRACT NUMBER	PROJECT NUMBER
HVAC MID & END STATIONS SECTIONS SHEET 1	AS NOTED	PP150969	8094
SHEET NUMBER		REVISIONS	
<b>WA-H-241</b>			