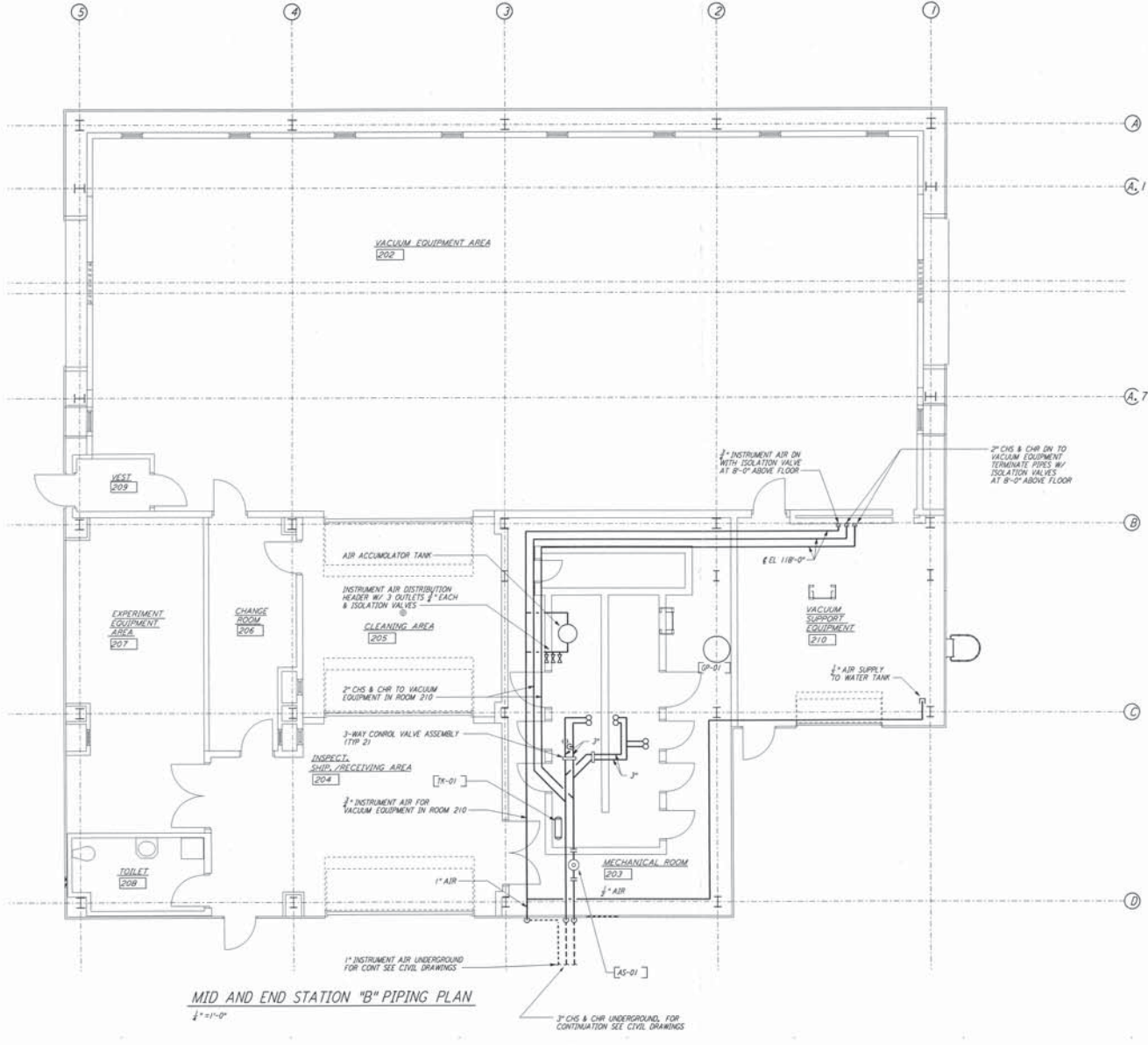
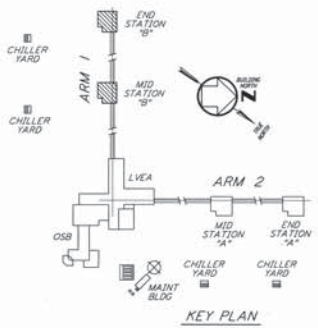


NOTES:
 1. FOR LEGEND, ABBREVIATIONS AND GENERAL NOTES SEE SHEETS
 WA-H-001 AND WA-H-002.



MID AND END STATION "B" PIPING PLAN
 1/2" = 1'-0"



0 4 8 12 16 FT
 1/4" = 1'-0"

This document and the design it covers are the property of PARSONS. It is to be used only for the project and for the purposes stated herein. No part of this document is to be reproduced, copied, loaned, exhibited, or used in any way without the written consent of PARSONS.

REV.	DATE	BY	CHKD	ENGR	PROJ	DESCRIPTION
1	5-15-98	CP	AA	AA	AA	ISSUED FOR AS-BUILT

ISSUED FOR CONSTRUCTION
DRAWN: CLP 6-24-98
CHECKED: TRR 7/1/98
ENGINEER: A.A. 7/1/98
PROJ: MIDW V10292

AS-BUILT DRAWINGS

PARSONS
 100 WEST WALNUT STREET
 PASADENA, CALIFORNIA

LIGO
 CALIFORNIA INSTITUTE OF TECHNOLOGY
 MASSACHUSETTS INSTITUTE OF TECHNOLOGY

LIGO-D960365-01-0
 LASER INTERFEROMETER
 GRAVITATIONAL-WAVE OBSERVATORY
 SITE NO. 1 - HANFORD, WASHINGTON

HVAC
 MID & END STATIONS "B"
 PIPING PLAN

AS NOTED PPI50969 8094
WA-H-216