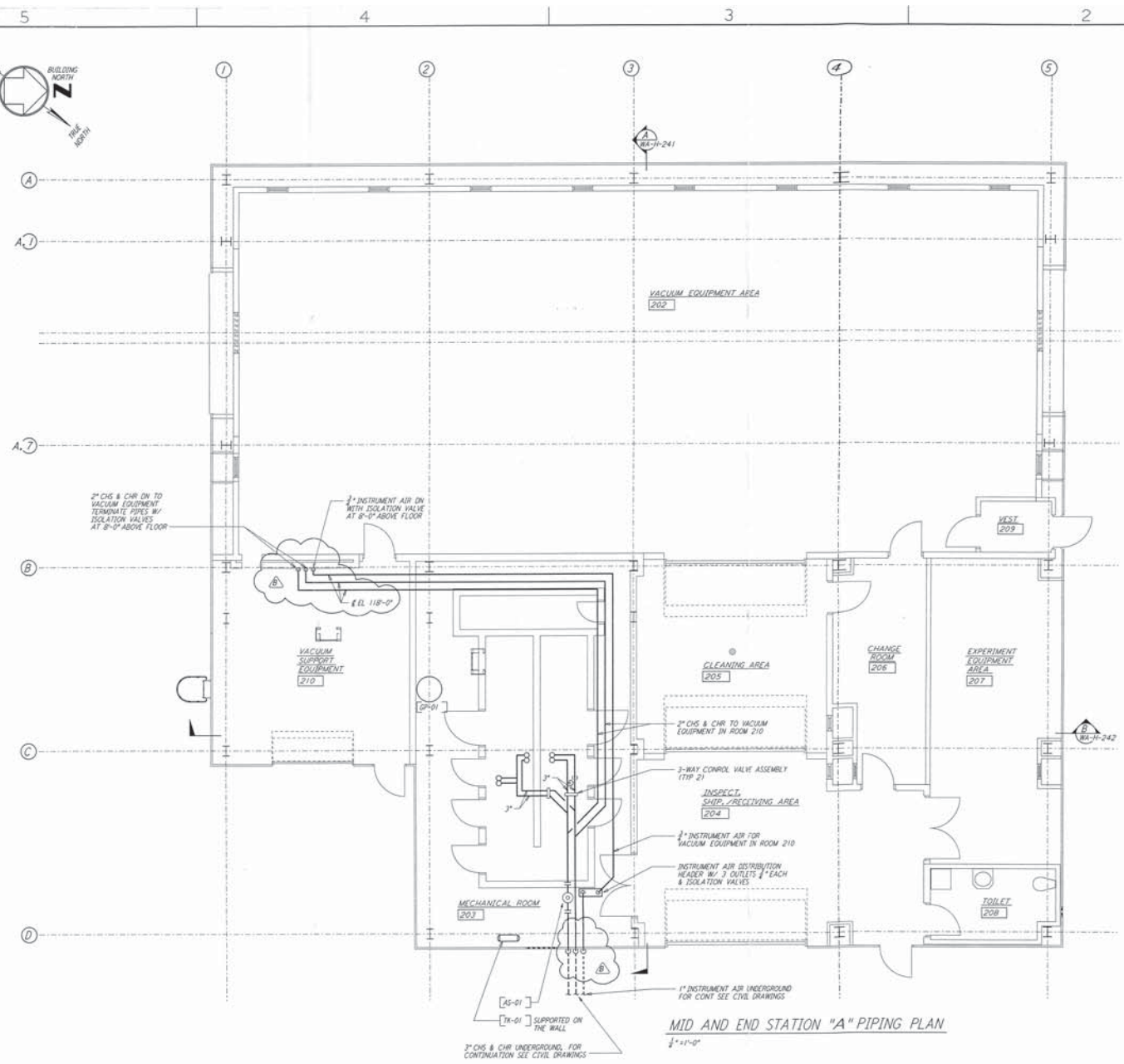


NOTES:
 1. FOR LEGEND, ABBREVIATIONS AND GENERAL NOTES SEE SHEETS
 WA-H-001 AND WA-H-002.

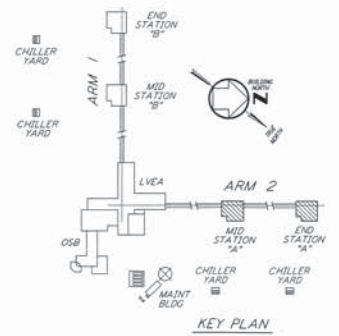


not be reproduced, copied, loaned, exhibited, or used in
 any other way, except by written consent from
PARSONS

This document and the design it covers are the property
 of **PARSONS**. They are loaned only with the
 borrower's expressed written agreement that they will



MID AND END STATION "A" PIPING PLAN
 1/4" = 1'-0"



KEY PLAN
 0 4 8 12 16 FT
 1/4" = 1'-0"

LIGO-0960264-B-0

| NO. | DATE | BY | CHKD | ENGR | PRJ | DESCRIPTION |
|-----|---------|-----|------|------|-----|---------------------------|
| B | 5-22-96 | CLP | YVAL | AA | TOM | BID ADDENDUM #2 |
| A | 4-19-96 | CLP | ME | AA | TOM | FINAL DESIGN REVIEW & BID |

| NO. | DATE | BY | CHKD | ENGR | PRJ | DESCRIPTION |
|-----|------|----|------|------|-----|-------------|
| | | | | | | |

| | |
|------|-----|
| DR | CLP |
| CHKD | |
| ENGR | |
| PRJ | |

PARSONS
 100 WEST WALNUT STREET
 PASADENA, CALIFORNIA

LIGO
 CALIFORNIA INSTITUTE OF TECHNOLOGY
 MASSACHUSETTS INSTITUTE OF TECHNOLOGY

LASER INTERFEROMETER
 GRAVITATIONAL-WAVE OBSERVATORY
 SITE NO. 1 - HANFORD, WASHINGTON

HVAC
 MID & END STATIONS "A"
 PIPING PLAN

AS NOTED PP150969 B094
WA-H-215