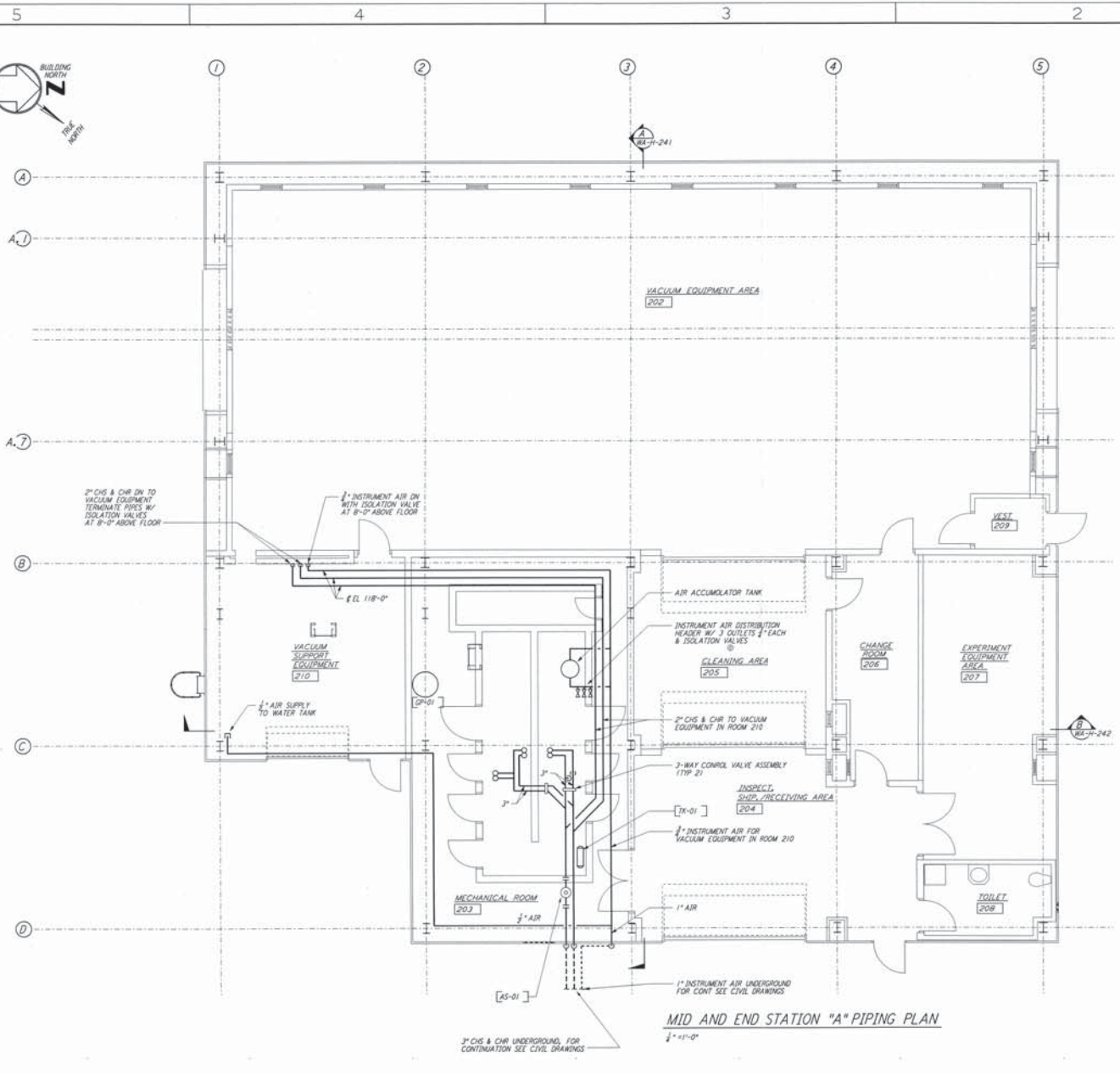
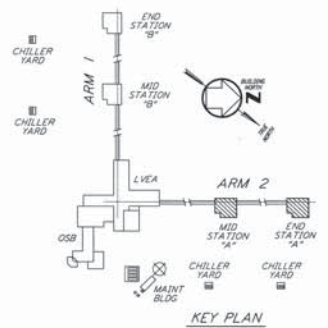


**NOTES:**  
 1. FOR LEGEND, ABBREVIATIONS AND GENERAL NOTES SEE SHEETS  
 WA-H-001 AND WA-H-002.



**MID AND END STATION "A" PIPING PLAN**



**KEY PLAN**



This document and the design it covers are the property of PARSONS. They are loaned only with the borrower's expressed written agreement that they will not be reproduced, copied, loaned, exhibited, or used in any other way, except by written consent from PARSONS to the borrower.

NO.	DATE	BY	CHKD	ENGR	PROJ	DESCRIPTION
1	5-15-98	CP	A.A	AA	PP	ISSUED FOR AS-BUILT

ISSUED FOR CONSTRUCTION	
DRAWN	CLP 6-24-98
CHECKED	MRE 7/19/98
ENGINEER	A.A 7/13/98
PROJ	INDU/7/5/98
<b>AS-BUILT DRAWINGS</b>	

**PARSONS**  
 100 WEST WALNUT STREET  
 PASADENA, CALIFORNIA

**LIGO**  
 CALIFORNIA INSTITUTE OF TECHNOLOGY  
 MASSACHUSETTS INSTITUTE OF TECHNOLOGY

**LIGO-D960364-01-O**  
 LASER INTERFEROMETER  
 GRAVITATIONAL-WAVE OBSERVATORY  
 SITE NO. 1 - HANFORD, WASHINGTON

TITLE	HVAC MID & END STATIONS "A" PIPING PLAN	SHEET NUMBER	AS NOTED PP150969	TOTAL SHEETS	B094
			<b>WA-H-215</b>		