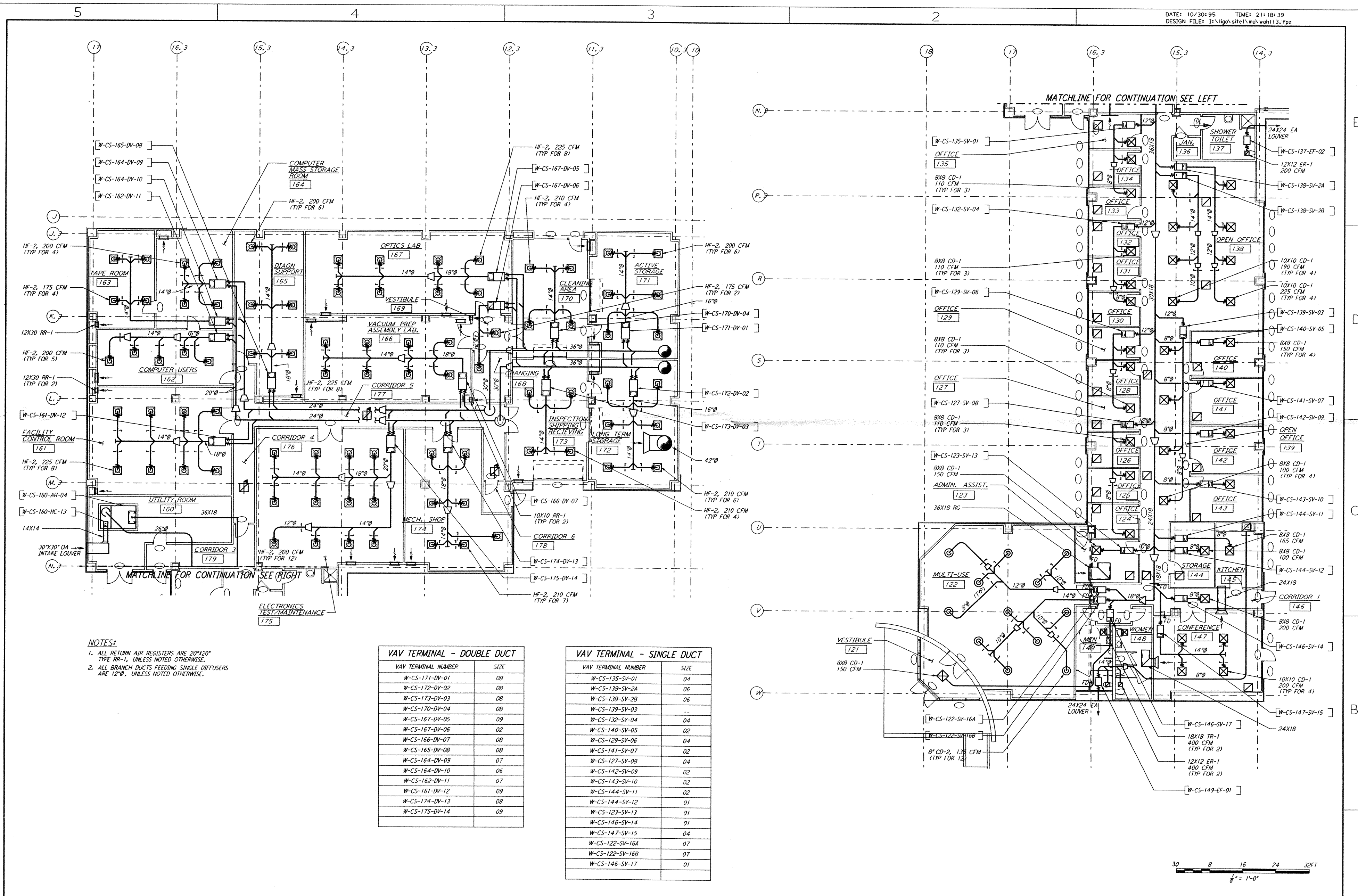


This document and the design it covers are the property of PARSONS. They are loaned only with the borrower's expressed written agreement that they will not be reproduced, copied, loaned, exhibited, or used in any other way, except by written consent from PARSONS to the borrower.



- NOTES:**
1. ALL RETURN AIR REGISTERS ARE 20"x20" TYPE RR-1, UNLESS NOTED OTHERWISE.
 2. ALL BRANCH DUCTS FEEDING SINGLE DIFFUSERS ARE 12"Ø, UNLESS NOTED OTHERWISE.

VAV TERMINAL - DOUBLE DUCT	
VAV TERMINAL NUMBER	SIZE
W-CS-171-DV-01	08
W-CS-172-DV-02	08
W-CS-173-DV-03	08
W-CS-170-DV-04	08
W-CS-167-DV-05	09
W-CS-167-DV-06	02
W-CS-166-DV-07	08
W-CS-165-DV-08	08
W-CS-164-DV-09	07
W-CS-164-DV-10	06
W-CS-162-DV-11	07
W-CS-161-DV-12	09
W-CS-174-DV-13	08
W-CS-175-DV-14	09

VAV TERMINAL - SINGLE DUCT	
VAV TERMINAL NUMBER	SIZE
W-CS-135-SV-01	04
W-CS-138-SV-2A	06
W-CS-138-SV-2B	06
W-CS-139-SV-03	--
W-CS-132-SV-04	04
W-CS-140-SV-05	02
W-CS-129-SV-06	04
W-CS-141-SV-07	02
W-CS-127-SV-08	04
W-CS-142-SV-09	02
W-CS-143-SV-10	02
W-CS-144-SV-11	02
W-CS-144-SV-12	01
W-CS-123-SV-13	01
W-CS-146-SV-14	01
W-CS-147-SV-15	04
W-CS-122-SV-16A	07
W-CS-122-SV-16B	07
W-CS-146-SV-17	01

NO.	DATE	APRD BY	DESCRIPTION OF REVISION

NO.	DATE	APRD BY	DESCRIPTION OF REVISION
J	10/31/95	TDM	PRELIMINARY DESIGN REVIEW
H			
G			
F			
E			
D			
C			
B			
A			

DATE	10/31/95
DRAWN	CLP
CHECKED	
ENGINEER	
PROJ MGR	

PARSONS
 100 WEST WALNUT STREET
 PASADENA, CALIFORNIA

LIGO
 CALIFORNIA INSTITUTE OF TECHNOLOGY
 MASSACHUSETTS INSTITUTE OF TECHNOLOGY

LASER INTERFEROMETER
 GRAVITATIONAL-WAVE OBSERVATORY
 SITE NO. 1 - HANFORD, WASHINGTON

CORNER STATION
 OSB FLOOR PLAN

AS NOTED PPI50969 8094
WA-H-113

Mon Oct 30 21:17:59 1995 S3-V18B2 J:\PLOTS\QUEUES\18B2\MU113.FPR