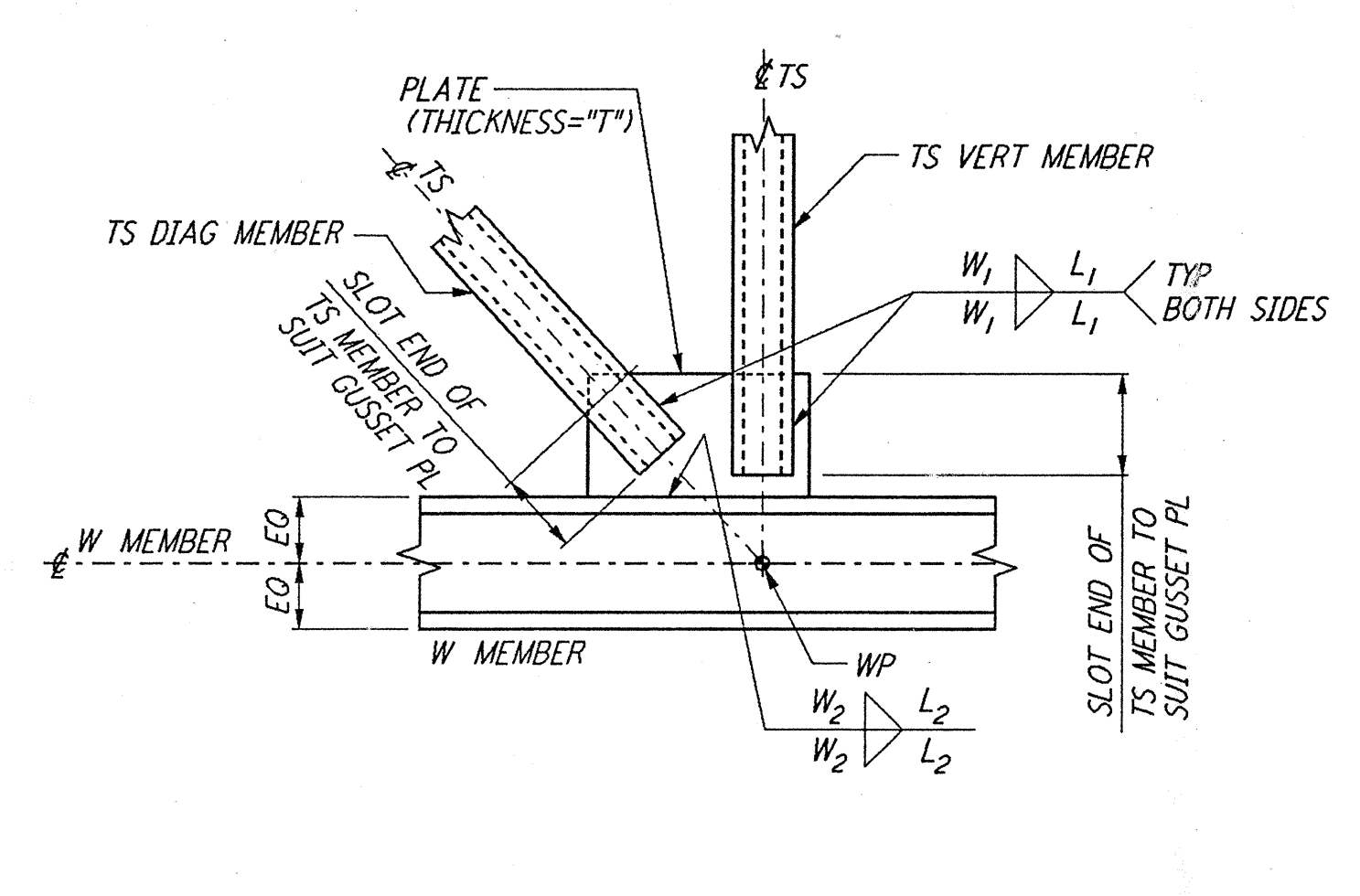
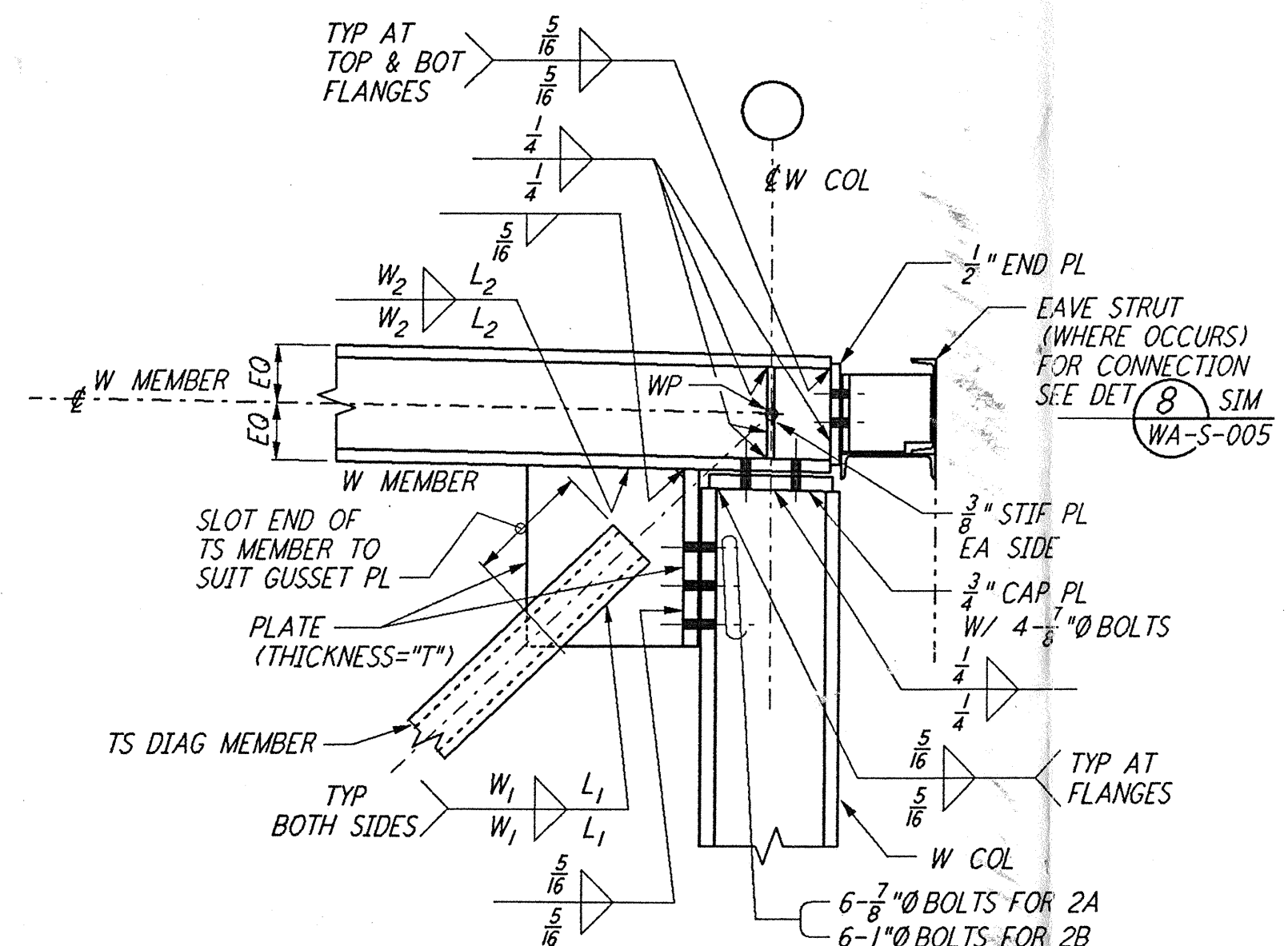


This document and the design it covers are the property of PARSONS. They are loaned only with the borrower's expressed written agreement that they will not be reproduced, copied, loaned, exhibited, or used in any other way, except by written consent from PARSONS to the borrower.



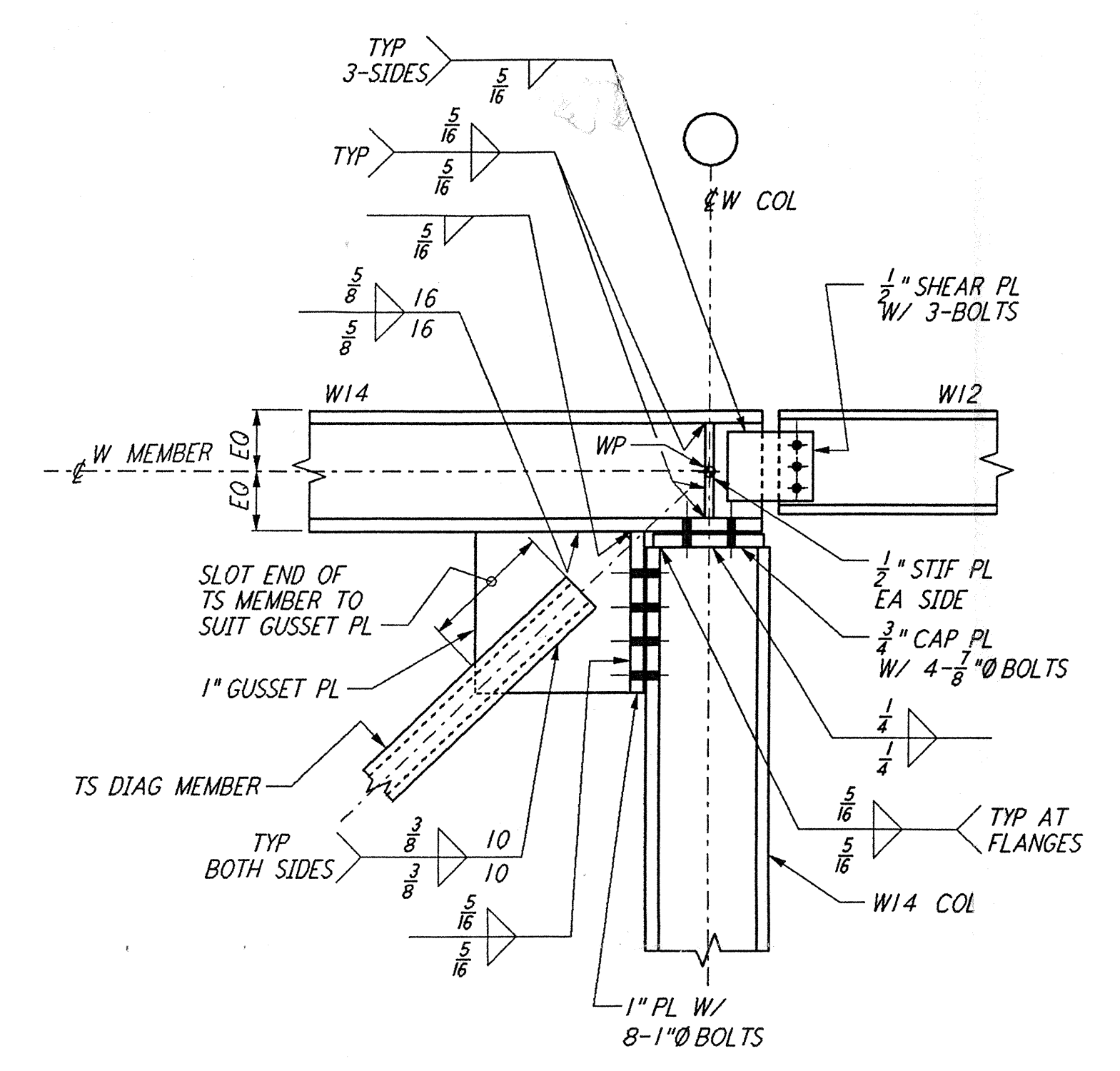
DETAIL NO.	PLATE THICKNESS "T"	WELD SIZE W ₁	WELD LENGTH L ₁	WELD SIZE W ₂	WELD LENGTH L ₂
1A	1/2"	1/4	6"	1/4	14"
1B	5/8"	5/16	6"	5/16	16"
1C	3/4"	5/16	8"	3/8	18"
1D	1"	3/8	10"	1/2	18"

DETAIL 1A 1B 1C 1D REF
 NTS WA-S-521 WA-S-517 WA-S-518

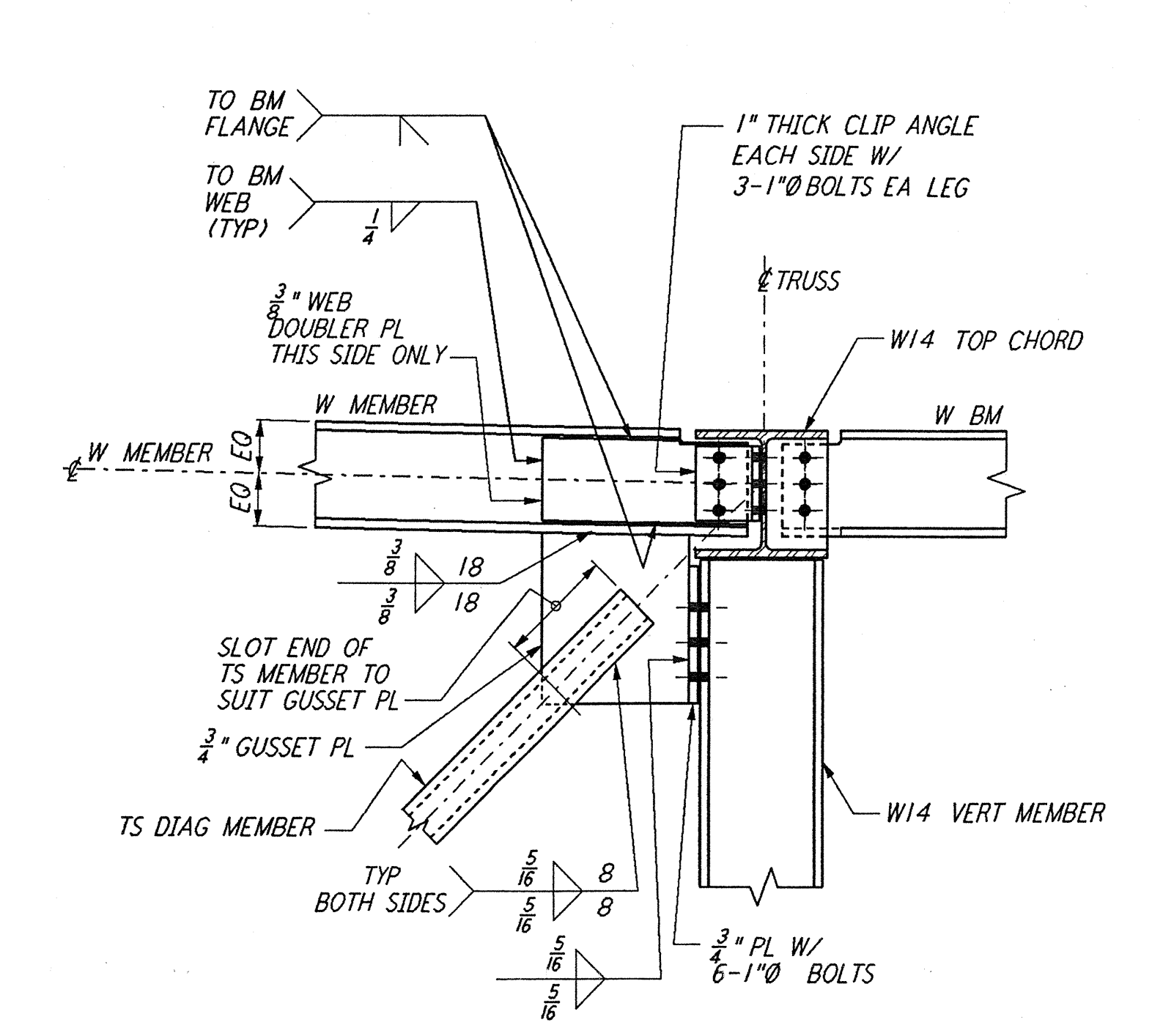


DETAIL NO	PLATE THICKNESS "T"	WELD SIZE W ₁	WELD LENGTH L ₁	WELD SIZE W ₂	WELD LENGTH L ₂
2A	1/2"	1/4	6"	1/4	14"
2B	3/4"	5/16	8"	3/8	18"

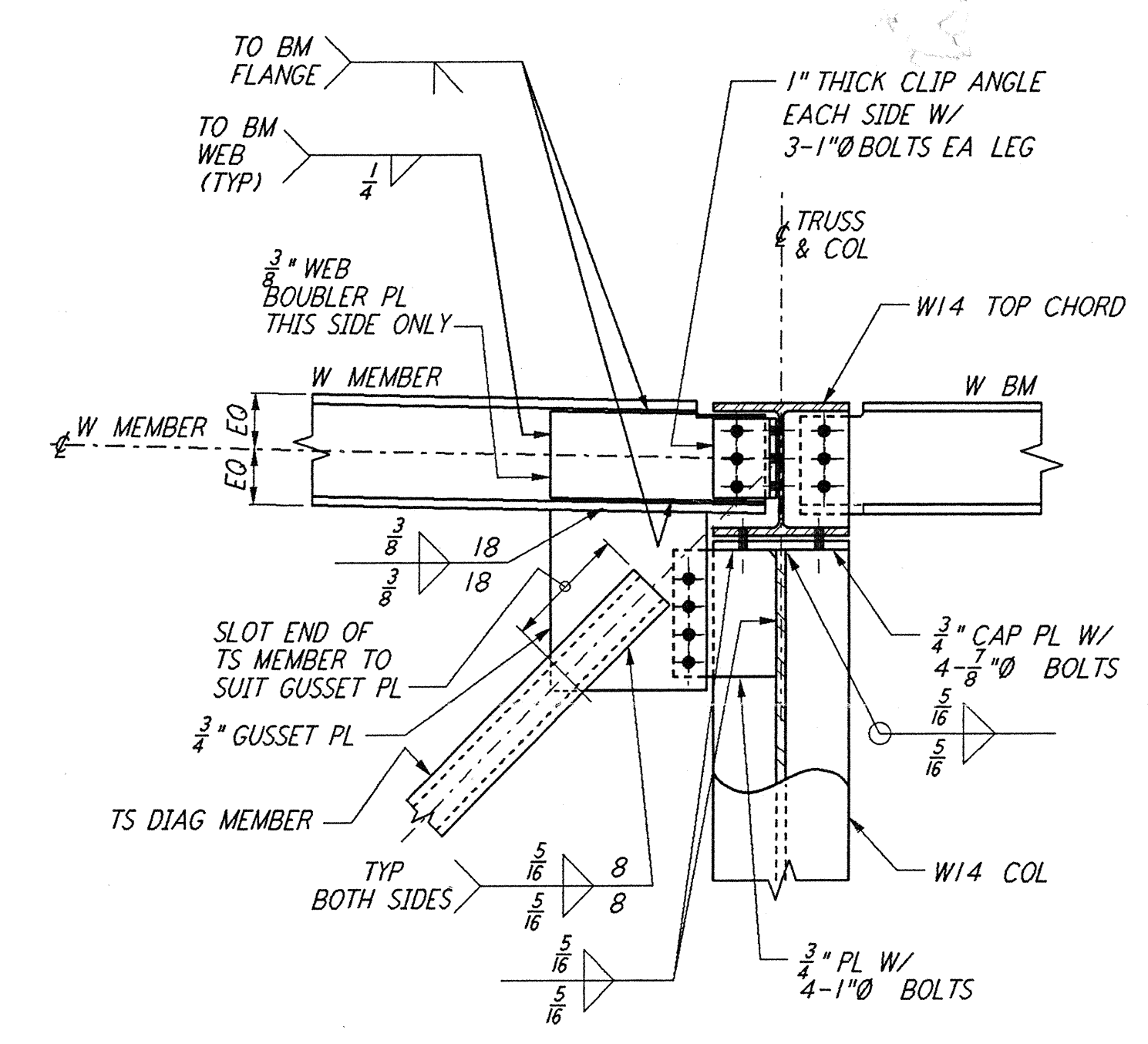
DETAIL 2A 2B REF
 NTS WA-S-521 WA-S-517 WA-S-518



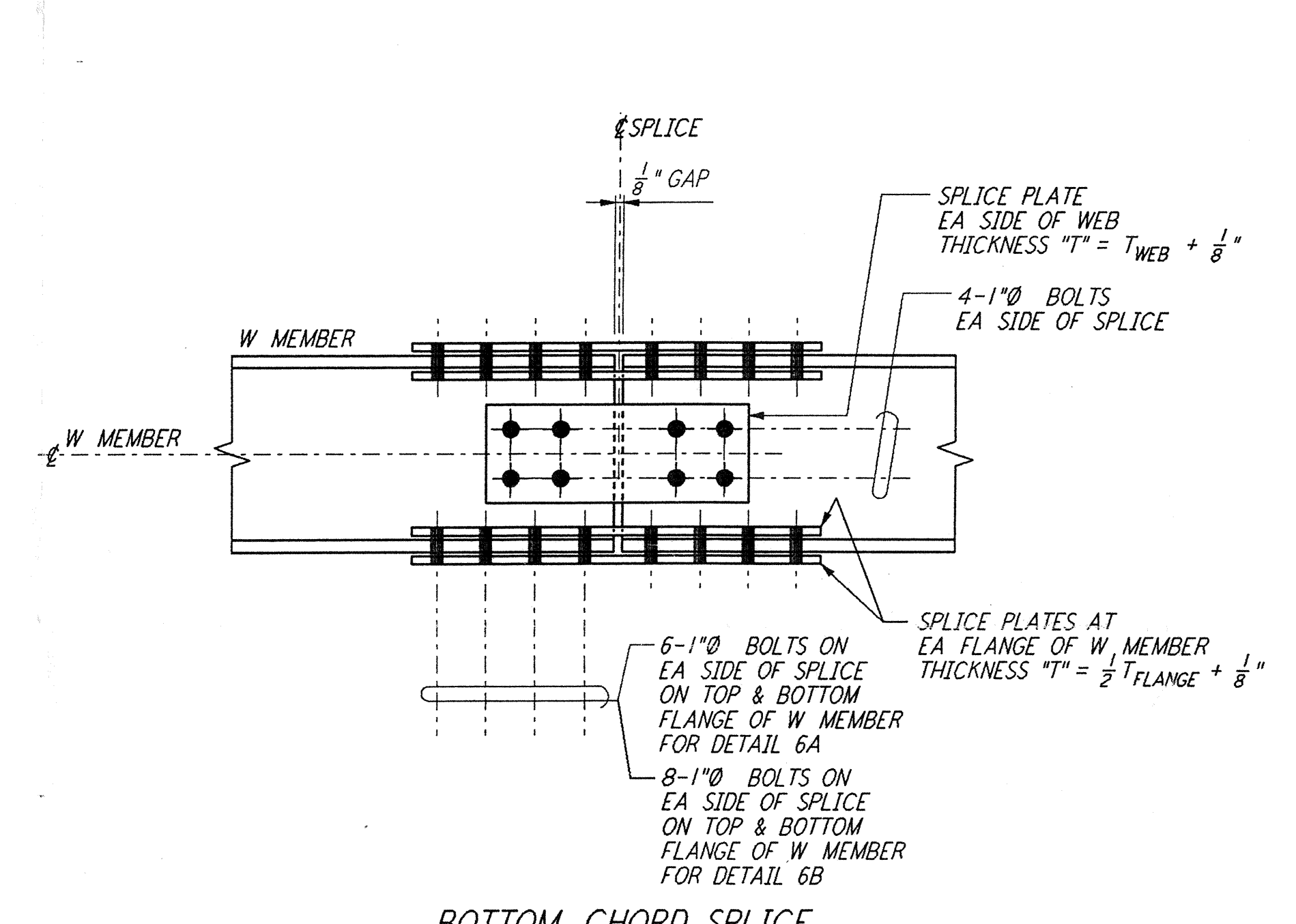
DETAIL 3 REF
 NTS WA-S-521 WA-S-517



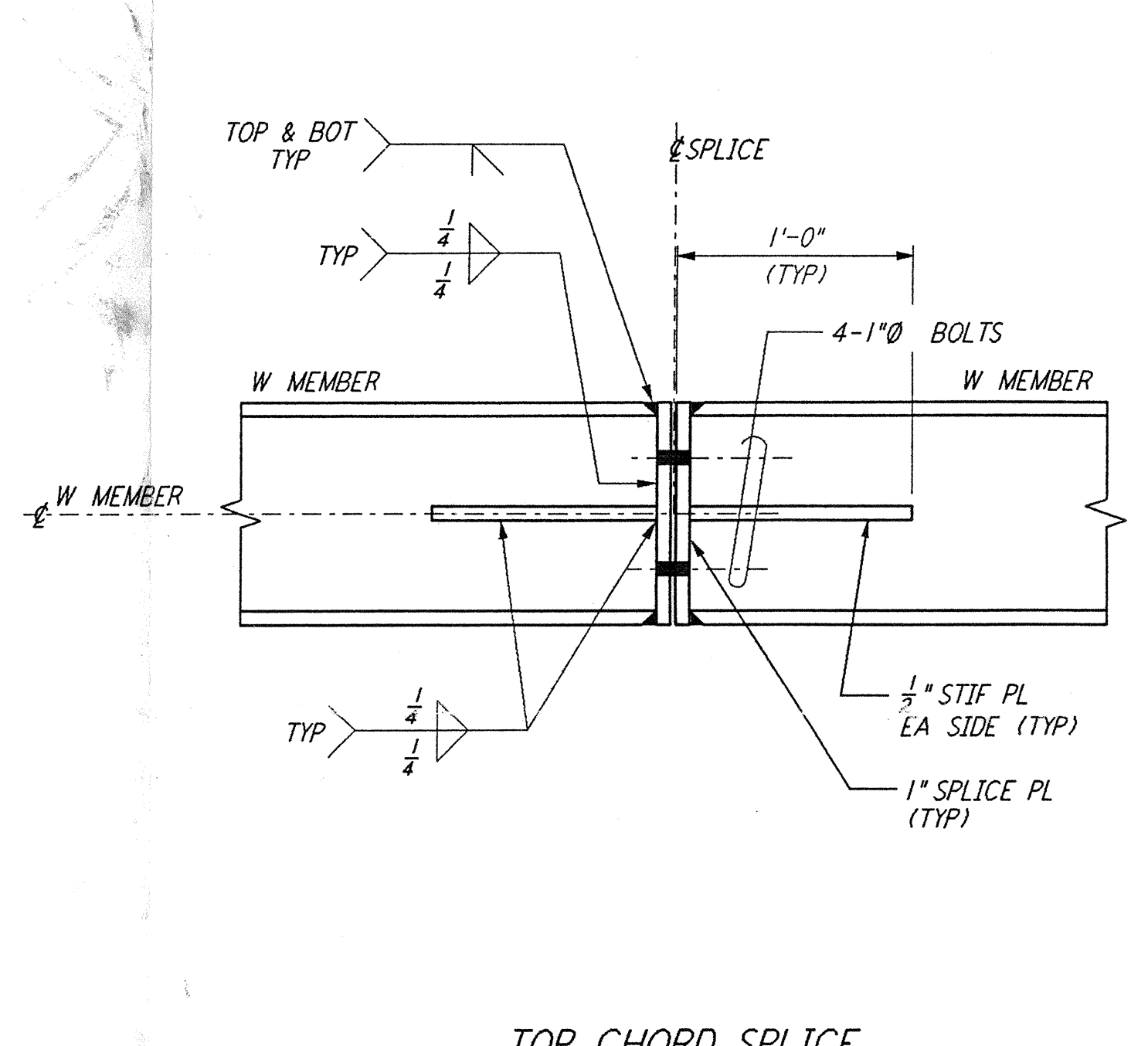
DETAIL 4 REF
 NTS WA-S-521 WA-S-517



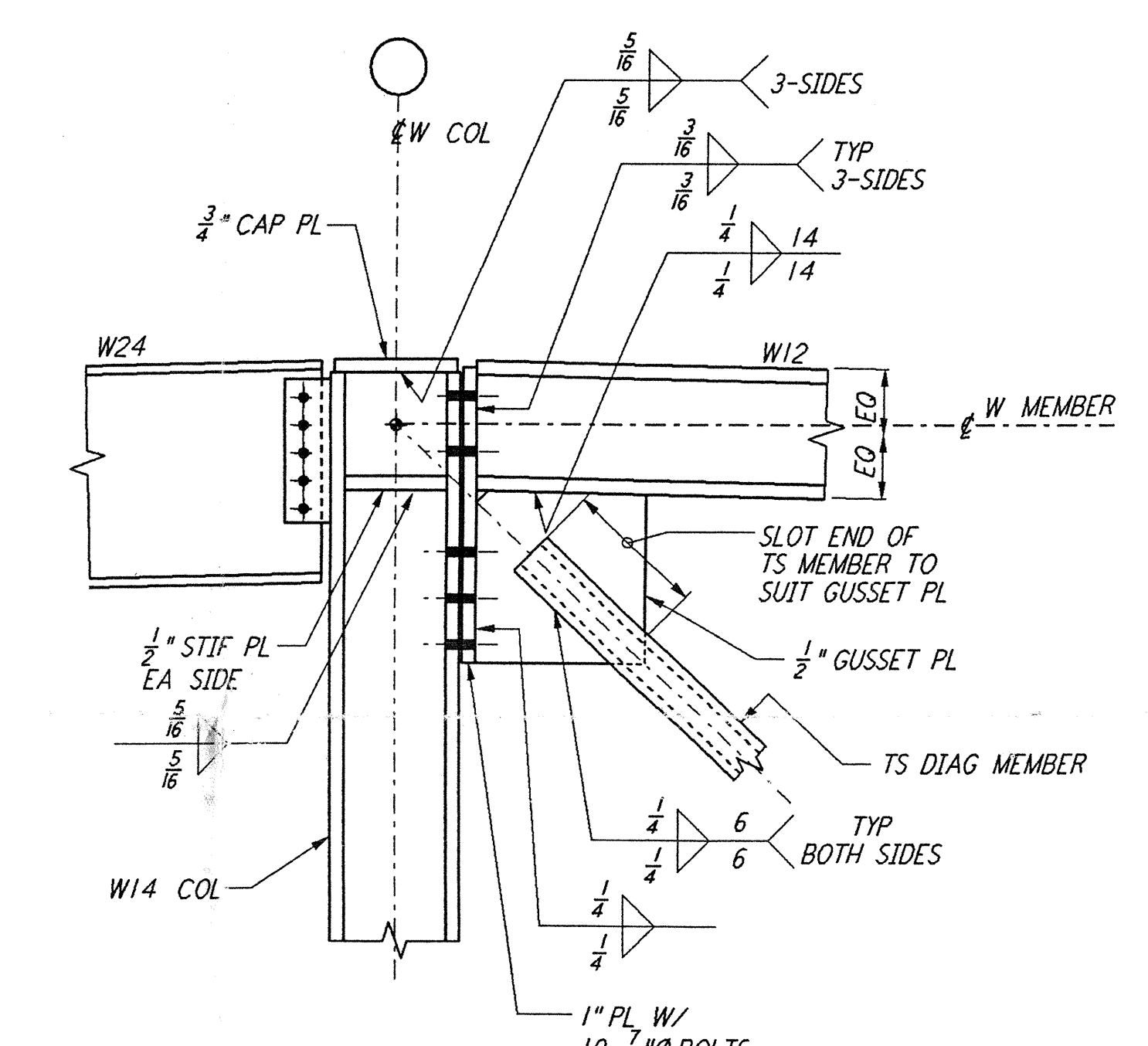
DETAIL 5 REF
 NTS WA-S-521 WA-S-517 WA-S-518



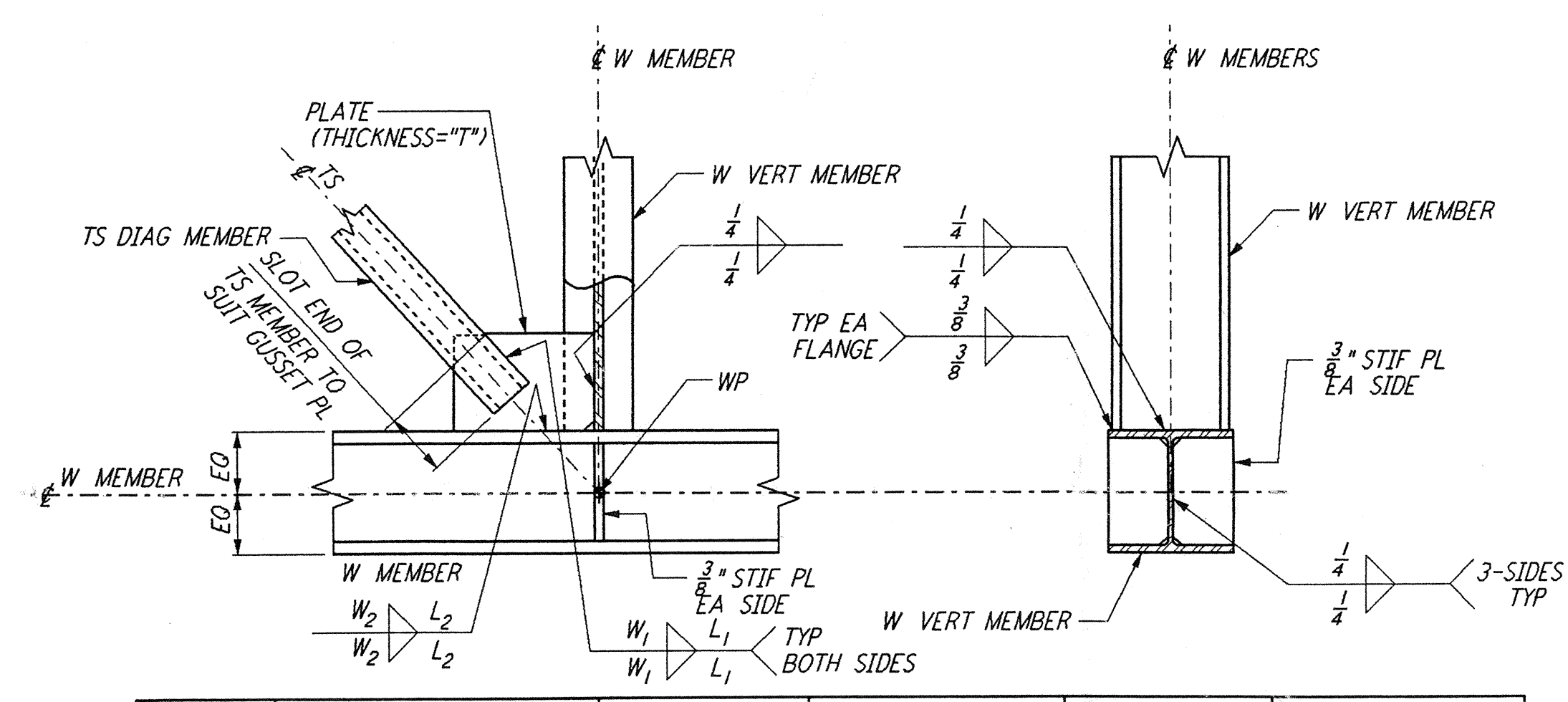
BOTTOM CHORD SPLICE
 DETAIL 6A 6B REF
 NTS WA-S-521 WA-S-517 WA-S-518



TOP CHORD SPLICE
 DETAIL 7 REF
 NTS WA-S-521 WA-S-517 WA-S-518

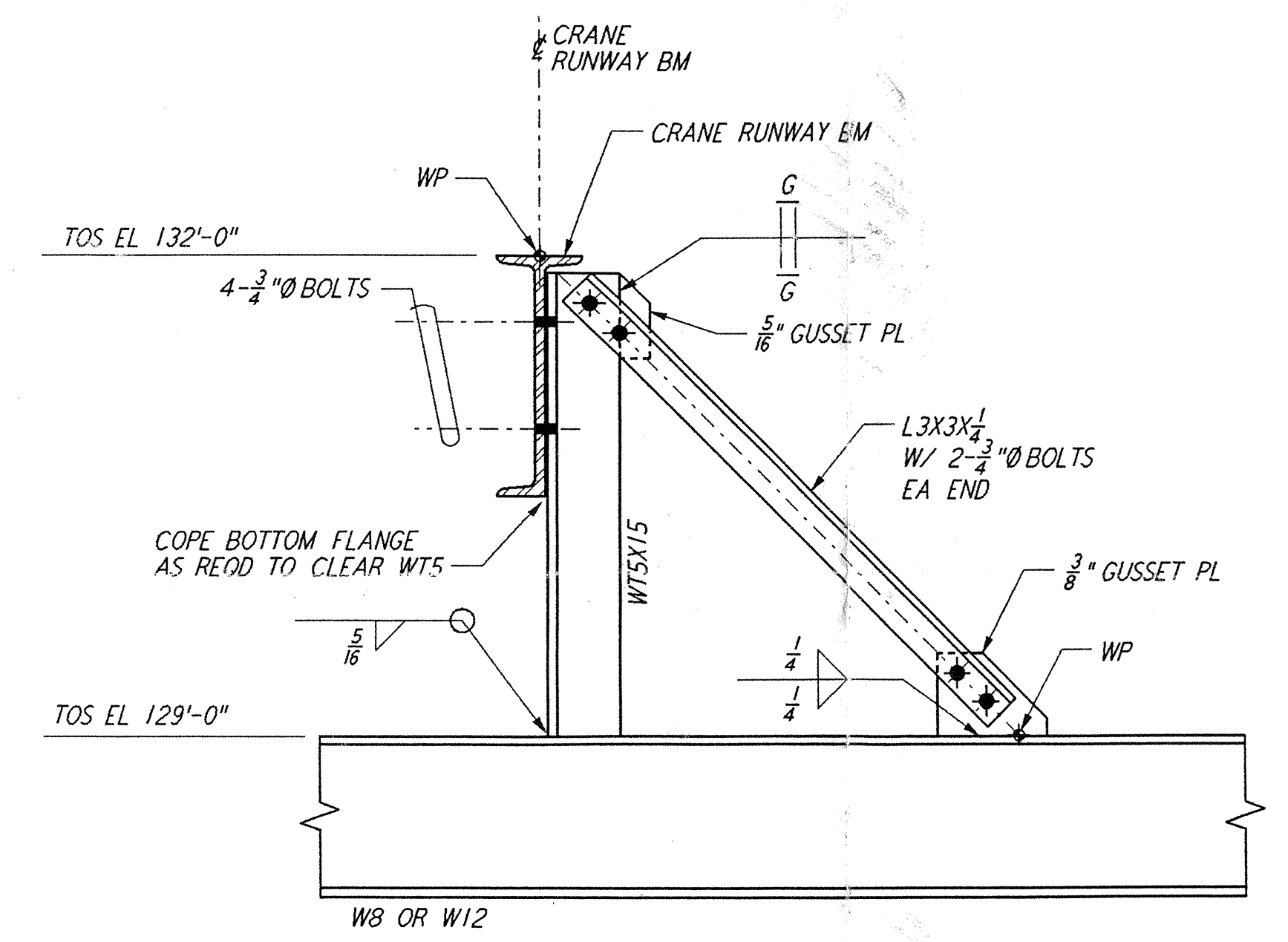


DETAIL 8 REF
 NTS WA-S-521 WA-S-518

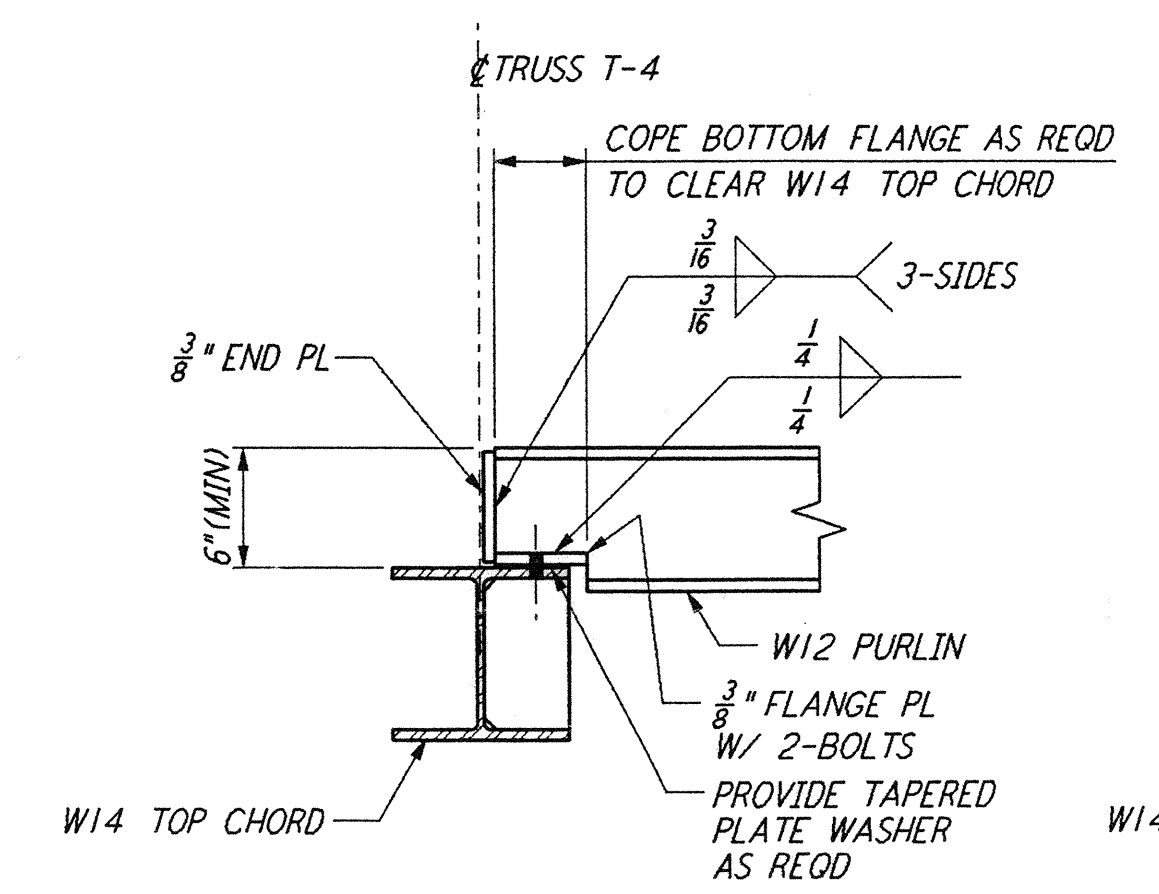


DETAIL NO.	PLATE THICKNESS "T"	WELD SIZE W ₁	WELD LENGTH L ₁	WELD SIZE W ₂	WELD LENGTH L ₂
9A	5/8"	5/16	6"	5/16	16"
9B	1"	3/8	10"	1/2	18"

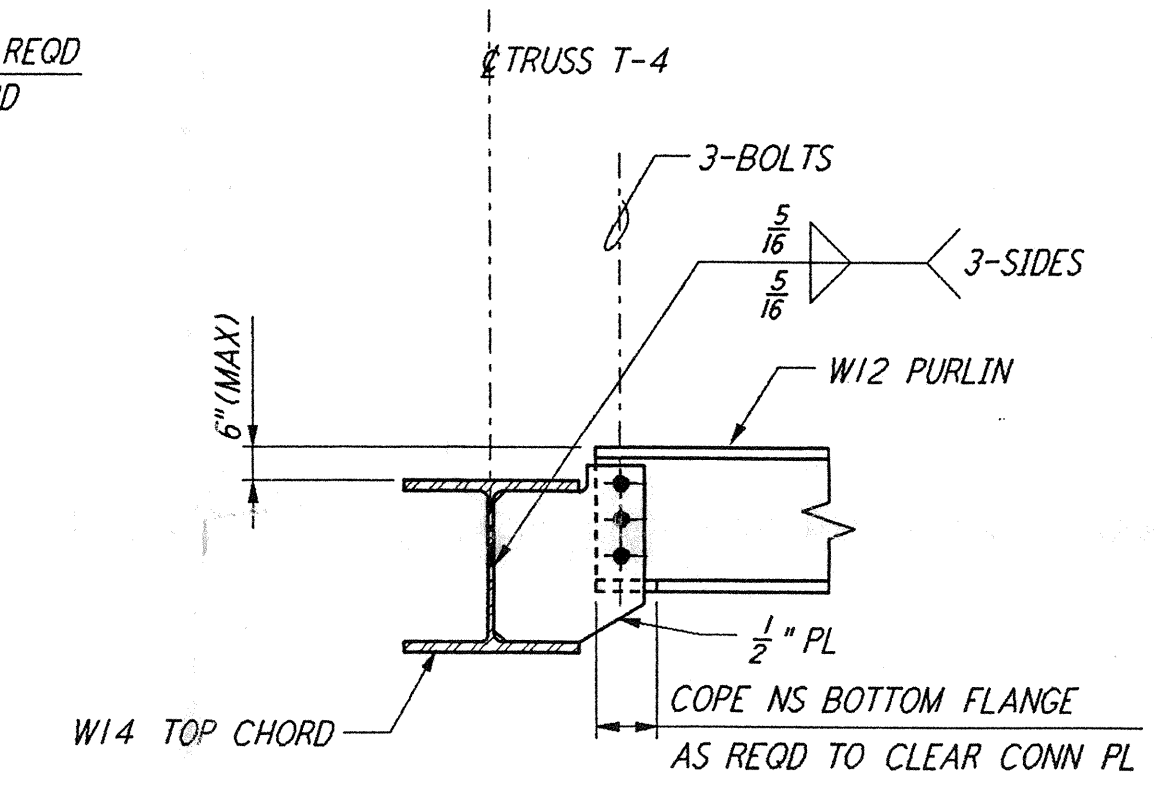
DETAIL 9A 9B REF
 NTS WA-S-521 WA-S-517 WA-S-518



DETAIL 10 REF
 NTS WA-S-521 WA-S-512



DETAIL 11 REF
 NTS WA-S-521 WA-S-504



Date Received: 4-19-96	LIC: D7100342-A-B
Contractor: WA-S-521	Contractor: WA-S-521
Scale: 1/8" = 1'-0"	Scale: 1/8" = 1'-0"
Date: 4/19/96	Approved: [Signature]
Date: 1/1	Approved: [Signature]
Date: 1/1	Approved: [Signature]
Date: 1/1	Approved: [Signature]

NO.	DATE	BY	CHKD	ENGR	PROJ	DESCRIPTION
A	4-19-96	MCS	DDM	HP	3377	FINAL DESIGN REVIEW & BID

DRAWN	MCS
CHECKED	
ENGINEER	
PROJ	

SCALE	NONE
CONTRACT NUMBER	PP150969
PROJECT NUMBER	8094
SHEET NUMBER	WA-S-521
REVISIONS	

PARSONS
 100 WEST WALNUT STREET
 PASADENA, CALIFORNIA

LIGO
 CALIFORNIA INSTITUTE OF TECHNOLOGY
 MASSACHUSETTS INSTITUTE OF TECHNOLOGY

LASER INTERFEROMETER
 GRAVITATIONAL-WAVE OBSERVATORY
 SITE NO. 1 - HANFORD, WASHINGTON

STRUCTURAL
 CORNER STATION
 LVEA STRUCTURAL STEEL
 SECTIONS AND DETAILS

WA-S-521